

TEMPLE EMETH GETS INVOLVED AND JOINS COALITION TO HELP ASYLUM SEEKERS

We are very pleased to announce that Temple Emeth, through the Social Action Committee, is joining a coalition of Bergen County congregations providing humanitarian support and advocacy for asylum seekers being held in the Elizabeth Detention Center.

The Coalition, the first enterprise of its kind in the New York metro area, hopes to grow from 4 congregations to 12. Current members are the Ethical Culture Society of Bergen County (spearheading member), St. Marks Episcopal Church in Teaneck, Central Unitarian Church in Paramus and Ridgewood Unitarian Church. The American Friends Association, Human Rights First, Catholic Charities and HIAS (an organization assisting Jewish immigrants) are involved in trying to find legal assistance for the detainees.

The detention center in Elizabeth houses immigrants coming into this country who come here without appropriate documentation. They may receive an initial cursory hearing fairly quickly, but can wait anywhere from 6 months to 3 years before a judge will determine whether or not they receive asylum. They can be "paroled" into the community as they wait for this hearing. Currently Elizabeth has about 300 detainees of whom only 3% have been released.

The conditions at Elizabeth are quite grim. It is a high security, privately run prison. Detainees wear uniforms, do not receive any supportive services, and are not given opportunities for recreation. They are denied many basic human rights. Elizabeth is known to have some of the toughest rules. It is one of the worst detention centers in the country.

One goal of the coalition is to enable eligible asylum seekers to be "paroled" from the Center while awaiting a hearing. It is looking for families who are willing to take in these people. The family has no legal liability for the detainee. As of this date, the coalition has been able to find sponsors for two detainees, one from the Congo and another from Egypt. Both have been successful in obtaining asylum.

There will be opportunities for Temple members to become involved with either asylum seekers who are "paroled" in the community (ESL tutoring, vocational guidance, legal help, etc.) , or those who remain in Elizabeth. This is also an opportunity to mobilize efforts to change the conditions and circumstances under which asylum seekers are treated.

In the near future, the Social Action Committee hopes to have a speaker who can tell us more about the issues and who can answer any questions Temple members may have. We will also set up a tour of the Detention Center so we can see first hand what the conditions are like.

WE CAN MAKE A REAL DIFFERENCE!



◆ ◆ ◆ ◆ ◆ **TEMPLE E METH** ◆ ◆ ◆ ◆ ◆

1666 Windsor Road
Teaneck, New Jersey 07666
Main Office # 833-1322 School Office # 833-8466

RABBI Steven Sirbu
RABBI EMERITUS Louis J. Sigel z"l
CANTOR Ellen S. Tilem
ASSISTANT RABBI Robin Nafshi
RELIGIOUS SCHOOL EDUCATOR Dora Geld Friedman
EARLY CHILDHOOD DIRECTOR Sharon Floch

◆ ◆ ◆ ◆ ◆

TEMPLE ADMINISTRATOR. Marion Schechter
BOOKKEEPER Mary Espiritu
ADMINISTRATIVE ASSISTANT. Sandra Rumayor
SCHOOL ADMINISTRATOR. Barbara Sabella

◆ ◆ ◆ ◆ ◆

PRESIDENT. Dan Firshein 287-9067
FIRST VICE-PRESIDENT. William Graizel 833-8403
SECOND VICE-PRESIDENT. Madelyn Wolf 585-0393
THIRD VICE-PRESIDENT. Rhona Herman 836-1946
SECRETARY. Marc Chelemer 569-4877
ASSISTANT SECRETARY. Wendy Kosakoff 880-6324
FINANCIAL SECRETARY. Michael Robinson 692-0779
ASSISTANT FINANCIAL SECRETARY. Richard Buchbinder 837-0694
TREASURER. Steve Packles 692-9881
ASSISTANT TREASURER Jeffrey Etzin 722-0405

◆ ◆ ◆ ◆ ◆

EDITOR. Sandi Klein 837-3850
GRAPHIC DESIGN. Barbara Balkin 261-6218

◆ ◆ ◆

<i>Bulletin Deadlines</i>			<i>Mid-Month Mailing Deadlines</i>	
<u>Month</u>	<u>Deadline Date</u>	<u>Publication Date</u>	<u>Deadline Date</u>	<u>Publication Date</u>
October	September 8	September 22	September 28	October 12
November	October 6	October 20	November 3	November 15
December	November 10	November 24	December 1	December 14
January	December 8	December 22	January 2	January 17
February	January 12	January 26	February 2	February 15
March	February 9	February 23	March 1	March 15
April	March 9	March 23	April 3	April 14
May	April 6	April 20	May 3	May 16
June	May 11	May 25	June 1	June 15
Midsummer			July 18	July 28

Material for the bulletin is welcome and essential for the success of the publication; however, it is necessary to honor the deadlines as listed.

For the Bulletin mailings, all material **must** be submitted by **8:00 p.m.** on the date of the deadline.

Please submit all material by e-mail to sandifk@aol.com and Barbara Balkin - dkrm505@yahoo.com

We cannot guarantee publication of items submitted on paper.

For Mid-month mailings, all materials (either camera ready art or information to be included in the body of the Mid-month sheet) are due by **12:00 noon** on the date of the deadline.

The Temple Emeth Bulletin is published monthly from September through June

Advertising Rates for Ad Size 2" x 3 1/2"

	Member	Non-Member
1 Month	\$ 50	\$ 75
5 Months	\$225	\$350
10 Months	\$300	\$450

For additional information, call (201) 833-1322

Message From the Rabbi

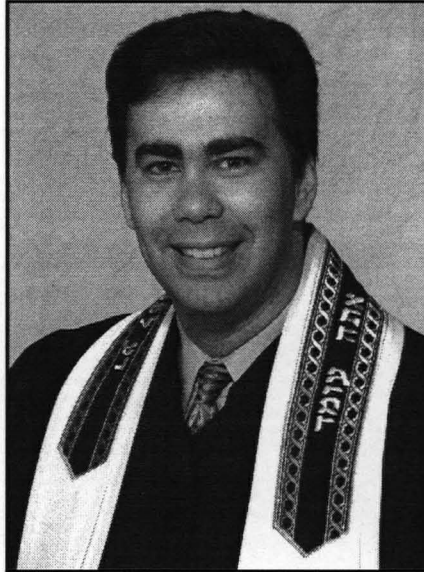
My last two columns have been about my experiences, both anticipated and actual, at the Union for Reform Judaism Biennial Convention in Houston last November. Before the Biennial started, delegates were told that synagogue membership would be a major theme of Rabbi Eric Yoffie's presidential sermon, the most important address of the convention. Rabbi Yoffie spoke passionately about the importance of making synagogue affiliation a life-long endeavor for every Jewish family. In the Reform context, this means pursuing policies and practices of Reform Jewish Outreach, welcoming interfaith families into our communities so that they can fulfill their religious needs and raise Jewish children in a comfortable environment.

At Temple Emeth, we know the importance of outreach, and we have a reputation of being warm and welcoming to all. Our past outreach programming was the first connection to Temple Emeth for some of today's most active Temple members. (Much of this success is thanks to Dru Greenwood, a Temple member who served as the director of the URJ's Outreach Department for fifteen years.) In the last few years, unfortunately, our outreach efforts have not lived up to our reputation or our potential. But that is about to change.

In January, several Temple members interested in outreach gathered to discuss ideas that would interest and attract intermarried families. There were plenty. They ranged from social events where interfaith couples could share their experiences to Shabbat dinners at which non-Jewish grandparents would be honored guests and learn about Judaism from their grandchildren. One idea was a session for the children of interfaith marriage to help them respond appropriately when their friends label them "half-Jewish." And another idea was to begin a Mothers' Circle for non-Jewish women raising Jewish children, a program that has been successful in many communities.

To my relief, almost all of the people at January's meeting agreed to serve on the Outreach Committee, and to work on two outreach events in the near future. The first is A Taste of Judaism, a three-part course for Jews or non-Jews with little or no

Jewish knowledge. That class will be on three consecutive Wednesdays: January 25, February 1, and February 8 at 7:30 p.m. Rabbi Nafshi, Cantor Tilem and I will teach an introduction to Jewish text, Jewish ethics, and Jewish worship, respectively. The second event is a chat about how to handle the challenges that arise for interfaith families around the Passover/Easter season. This session will be on a Sunday in late March or early April; check next month's bulletin for the exact date and time.



Rabbi Steven Sirbu

If outreach programming is something that interests you, now is a great time to join the committee. We are still looking for good ideas, and new people to make them happen. The next Outreach Committee meeting will be Sunday, March 12 at 11:15 a.m. You are invited to attend.

At the Biennial, Rabbi Yoffie specified two ways that our outreach efforts must change in order to fully achieve their goals of including all Jewish families into synagogue life. One is that we must do more to encourage conversion of the non-Jewish spouse. This obviously is not appropriate for some, or even for most, but he is convinced (and I

agree) that at least a few non-Jewish spouses haven't converted because no one has asked them in the right way. The second idea is to honor the non-Jewish spouse in the synagogue. Only through their flexibility and commitment are so many intermarried Jews able to find a spiritual home in a synagogue and so many of their children to be raised as Jews. This contribution to Judaism should be acknowledged. These newer ideas are not on the short-term agenda of the Outreach Committee, but I hope that as our outreach programming grows we can consider them in the years ahead. If you want to read more about them you can log on to <http://urj.org/docs/reso/#new> and click on Resolution on the Unfinished Outreach Revolution.

I am excited that Temple Emeth will again be living up to its reputation as a synagogue with strong outreach programming, and I am proud that we have always been a warm, welcoming place for every Jew who is searching for a spiritual home. I know that our synagogue will be stronger as we continue this great tradition.

Message From the President

Earth is an increasingly complex place and we are constantly bombarded with information and dizzying possibilities in the form of snail mail, faxes, e-mails and telephone calls. A recent article in Time magazine put it this way: You can almost feel your brain cells crackling to keep up with the choices - trivial and profound - that confront us at every turn: picking a cell phone plan or an on demand movie, selecting the best mix of investments in a 401(k) or the right health plan, or just knowing which eggs to buy (cage free? Organic? Omega-3 enriched?) While I can think of many benefits to the information that these forms of communication provide, we are asked to respond evermore quickly to rapidly changing realities in our place of work, family homes, communities and our nation.

Our congregation plays a significant role in our lives and helps us put it all in perspective. Traditionally, synagogues have served three functions: to be a house of prayer, a house of study, and a house of assembly. But in this multifaceted world in which we live, our Temple Emeth congregation also serves as an extended family for those separated from their loved ones, and as a community where we come to learn, to connect, to seek and to share our collective wisdom. We celebrate each other's simchas and support each other at difficult times.

That's why each month I look forward to reading the Temple Emeth Bulletin, a simple easy-to-digest information source. I learn about the simchas and those in need of condolences. I learn the answers to some of my questions: What's going on in the TE Library? What's Rabbi Sirbu discussing this Sunday at the B'Yachad Breakfast? What's happening in the ECC and our Religious School? What are our college kids up to? Where's Renaissance off to this month? When's that Couples Club Karaoke night happening? Where's the strategic plan headed? Is there any way I can help with the Social Action or Caring Committees? Hey that Adult Kallah at the Pearl River Hilton in February sounds great- think we'll go this year! So, I encourage

each of you to get a hot cup of coffee or tea and take a deep, relaxing breath and.... just for a few minutes each month....unstaple your Bulletin and read about your community- your Temple Emeth family. Next time you see me, tell me: what's your favorite part of the Bulletin?

Of course, nothing would happen without the dedication and monthly efforts of our editorial staff Sandi Klein and Barbara Balkin our bulletin mavens, assisted by Marion, Sandra, and Carol in our Temple office. Through their hard work, our Bulletin gets sent out in a timely fashion and gets better with each issue. Believe me, not every synagogue bulletin is as well conceived as ours.

Ever come across any of these announcements?!?!

- A bean supper will be held Wed. eve in the community center. Music will follow.

-The ladies of Hadassah have cast off clothing of every kind and they may be

seen in the basement on Tuesdays,

-Weight Watchers will meet at 7PM at the JCC.

Please use the large double doors at the side entrance.

-Thursday at 5:00PM, there will be a meeting of the Little Mothers Club. All women wishing to become Little Mothers please see the rabbi in his private study.

-Remember in prayer the many who are sick of our congregation

-Rabbi is on vacation. Massages can be given to his secretary

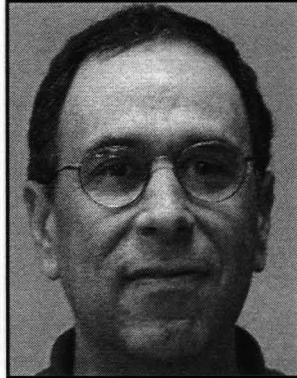
-We are taking up a collection to defray the cost of the new carpet in the sanctuary. All those wishing to do something on the carpet will come forward and get a piece of paper

-If you enjoy sinning, the choir is looking for you!

-The president unveiled the synagogue's new fundraising campaign slogan this week: "I Upped My Pledge-Up Yours!"

I am confident that none of these announcements will make it into our Bulletin.

B'shalom
Dan Firshein
President



From the Religious School

“Here on Earth too, God lives, not in Heaven alone. A beautiful tree, a newly plowed field, in them you will find God’s likeness.” (Saul Tchernikovsky)

The Midrash tells us that when God created Adam and Eve, God took them to see all the trees of the Garden of Eden and instructed them “See how they are. Everything that I have created, I created for you.”

Another Midrash tell us “If you are in the middle of planting and word reaches you that the Messiah has arrived do not interrupt your work; first finish your planting and only then go out to welcome the Messiah”.

These two Midrashim will serve as the inspiration for our religious school when we celebrate the holiday of Tu B’shevat. On Tu B’shevat, we celebrate the rebirth of nature, the rebirth of Israel, and the beauty of everything God has created. We affirm and recognize our responsibility towards each living thing. We express in song and story our love for the land of Israel – “the good land”.

We study the Kabbalists (Jewish mystics) who taught us that in life we can all move from the physical to the spiritual. As we sit together and taste a variety of fruit and drink, we ask ourselves “How do our actions affect the world around us?” Our students will learn that our tradition includes “Blessings of Appreciation” that can be said any time we notice the special world around us. “Blessings of Appreciation” – Brachot Hanehenin – have been written for smelling delicious fruit, for

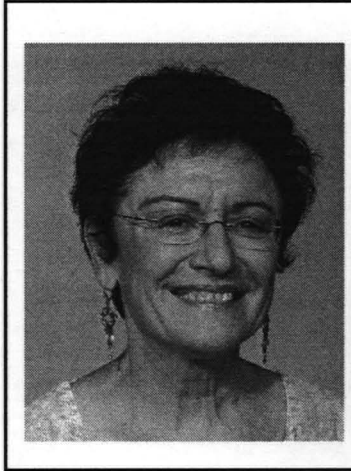
meeting someone wise, for seeing a rainbow and more. All of the above reminds us of God’s presence in the world of nature. Our tradition gives us many paths to connect to nature, each other, and to God.

A noted Israeli poet, Zelda, writes about Torah and nature:

The moon is teaching Bible.
Cyclamen, poppy, and mountain
listen with joy.
Only the girl cries.
The poppy can’t hear her crying –
burning like the verse.
The cyclamen doesn’t listen to
the crying –
The cyclamen swoons from the
sweet secrets.

The mountain is sunk in thought.
Tu B’shevat (the 15th day of the Hebrew month of Shevat) is a perfect time to connect to the land and the people of Israel and to eat together with family and friends while recalling God’s goodness. Our students will celebrate and experience the “bounties of Tu B’shevat by participating in Tu B’shevat seders, planting, and honoring loved ones by planting trees in Israel through JNF.

B’vracha,
Dora Geld Friedman



From the Early Childhood Center

With winter now fully upon us and daylight hours still short, remember that it is never too early to start reading to children. Even babies as young as six weeks old have exhibited signs of pleasure when read to by a parent, grandparent or caretaker. The Early Childhood Center provides our students with an environment rich in literacy opportunities. In addition to story time, which is a daily feature in each of our classrooms, the children learn to “dictate” stories to their teachers who then record them on paper, to “document” their experiences on charts, and to “identify” familiar objects within the classroom by their written labels. Here are some suggestions for reading with children from the Partnership for Reading, a collaboration between the National Institute for Literacy, the National Institute of Child Health and Human Development, and the United States Department of Education.

Read to children in a comfortable place and show them that reading is fun and rewarding. Show enthusiasm as you read. Expression and sound effects help the story come to life for young children.

Read to your children often. Set aside special times for reading each day. The times do not have to be lengthy, just consistent.

Read many different kinds of books. Poetry and rhyming books are especially appropriate for

young children.

Talk about what you are reading as you go along.

Comment about what is happening in the story. Help your children make connections between print and pictures. Ask them what they think will happen next. Help them relate the story to their own lives. This can be especially helpful when trying to introduce children to a difficult real-life subject.

Provide sturdy books to look at, touch and hold. As the children grow older, keep books where they can easily be reached.

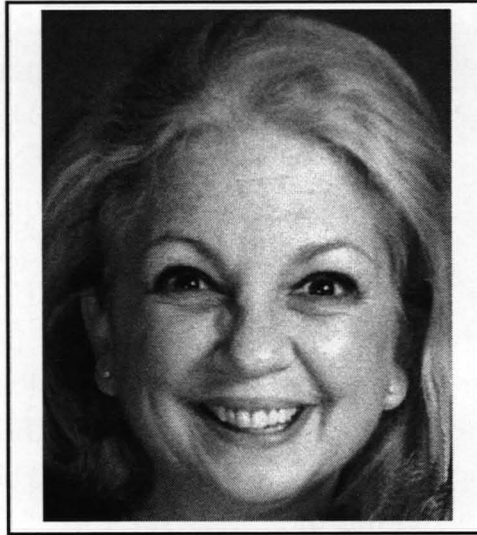
Read favorite books again and again. Repeating the same stories helps children learn to read by hearing familiar words and seeing what they look like in print.

As you’re reading, point out letters and have your children name them. Then see if together you can find other words that begin with the same letter or sound.

Reading is more than a skill. It helps children to explore and learn about their world and, as importantly, provides them with special time with you. And, as with other things, remember to give them lots of positive reinforcement and let them know how proud you are of what they are learning.

Happy Reading.

Sharon Floch,
ECC Director



Visit the Temple website at www.emeth.org

COUPLES CLUB

No planning, no children, no brainer!

Grownups night out is back.

Temple Emeth is resurrecting its **Couples Club** (including singles) for members in their 30's, 40's and 50's.

We hope to meet monthly starting with our March 4th inaugural event: A **KARAOKE NIGHT** at 8:00 p.m. at the Teaneck home of the new co-chairs, Stacy and Brian Lawrence.

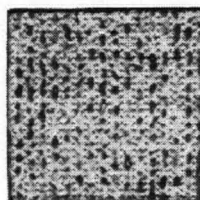
If and when we run out of songs, we'll engage in some friendly competition with group Pictionary. Bring a unique dessert and at the end of the evening, we'll vote on the most delectable. The winner will go home with a Martha Stewart Coffee Table Cookbook, donated by the Lawrences.

For directions and
more information:

e-mail brian.d.lawrence@verizon.net.

B'Yachad Bulletin

**Rabbi Nafshi
and
Cantor Goldman**



**will lead our
9th Annual
Model Seder**

for the non-Jewish community on

April 2nd

We need 30+ volunteers to
prepare Seder food

and/or set-up tables for guests
from 9 a.m. – 2 p.m.

(or any hours you can spare)

Welcome guests – 2:00 – 2:30 p.m.

Host tables – 2:30 – 4:30 p.m.

Please contact either:

Sy Lazar at (201) 498-9563 or

Art Lerman at alerman@mercy.edu

Regional Choir Festival

March 19, 2006

3:00 p.m.

TEMPLE SINAI

Summit, New Jersey

Shiru Shir Chadash:

Let Us Sing A New Song

Co-sponsored by:

Temple Sinai, Summit, NJ

AMERICAN CONFERENCE OF CANTORS (ACC)

NEW JERSEY-WEST HUDSON VALLEY COUNCIL

Save the Date



Rabbi Joshua Trachtenberg Memorial Library Update:

Tu B'Shevat, Trees,
Torah and Tithes
By Laurel Kane

ASSOCIATION OF JEWISH LIBRARIES ACCREDITATION

I embarked on writing this article because I thought it would be appropriate and interesting to write about Tu B'Shevat for the February Bulletin article. It seemed like a straightforward topic. As I started to write it, I realized that it branched in many directions. The date, the 15th of Shevat, was simple (or so I thought)! The meaning also appeared simple: the New Year of trees. A little knowledge meant a little research, which led to deeper digging, and that resulted in learning entirely new concepts about this "minor" holiday.

First, the date. When is Tu B'Shevat? According to the Mishnah tractate Rosh Hashanah, there are four New Years, including the *first* of Shevat as the New Year for trees. In the Talmud, the date became the *fifteenth* of Shevat. This date marks the day that the winter rains have ended, and sap begins to rise in the trees. This leads to the blossoming of the trees, and the subsequent formation of fruit. The almond tree is usually the first to bloom in Israel, so Tu B'Shevat is often associated with the almond tree blossoms.

Now, what does this have to do with tithing? In Leviticus 19:23-25, God told the people that when they enter Israel and plant any tree for food, they could not eat its fruit for the first three years. The fruit of the fourth year had to be given as a praise offering. In the fifth year the fruit of a tree could be eaten, but one-tenth of the crop had to be given to the priests as a tithe. Tu B'Shevat is the date from which each year's crop is counted, and the tithe is calculated. If your tree bloomed before Tu B'Shevat, it counted in last year's tithe, even if it didn't form fruit until after Tu B'Shevat.

When we observe Tu B'Shevat, we look around us and see that *our* trees are dormant, possibly even covered with ice or snow. The fir trees have their dark green needles, but the deciduous trees have lost their leaves, and their branches appear bereft of adornment. Look a little closer. At the tips of some branches tiny buds have already begun to form, with the promise of leaves and flowers to come.

Now is the time for us to plan our gardens and order our seeds and plants. We can choose plants that are named in the Bible. Some common ones are buttercup, blue mallow and narcissus. We can plant beautiful shrubs that grow profusely in Israel today, such as lantana and hibiscus. We can even plant trees that also grow in Israel, including cedar, pine and willow.

As we celebrate the blossoming of trees in Israel, we also recall the miracle of the modern forests in Israel. Since 1901, the Jewish National Fund and its supporters have planted over **240 million** trees. Who are its supporters? We are! All of us who have donated trees in memory of a loved one, in honor of a special occasion, or just as a mitzvah!

Tu B'Shevat has a more spiritual aspect as well. We recall the words of the song that explicitly states the metaphor that the Torah is a Tree of Life:

*It is a Tree of Life to all who hold fast to it,
And all of its children are happy.*

As long as we have the Torah, we have the most special Tree of all. Just as we must be guardians of the trees that are in our domain, whether in our back yard or our State and National Forests, we must continue to be guardians of Torah, our Tree of Life, and continue to sow its seeds, so that it will last forever.

Services and Smachot

6 Shevat 5766

Friday, February 3

Saturday, February 4

Torah Portion: Exodus 10:1-13:16

Shabbat Bo

Family Service at 7:30 p.m.

Shabbat Worship at 10:30 a.m.

Haftarah: Jeremiah 46:13-28

13 Shevat 5766

Friday, February 10

**The Oneg is being sponsored by Barbara Finkelstein and Bruce Gionet
in honor of the Bat Mitzvah of their daughter, Anna Gionet**

Saturday, February 11 Tot Shabbat at 9:30 a.m. Shabbat Worship at 10:30 a.m.

BAT MITZVAH OF ANNA GIONET

Torah Portion: Exodus: 13:17-17:16

Haftarah: Judges 4:4-5:31

20 Shevat 5766

Friday, February 17

**The Oneg is being sponsored by Nancy and Kenneth Scher
in honor of the Bat Mitzvah of their daughter, Naomi Scher**

Saturday, February 18

Shabbat Worship at 10:30 a.m.

BAT MITZVAH OF NAOMI SCHER

Torah Portion: Exodus 18:1-20:23

Haftarah: Isaiah 6:1-7:6: 9:5-6

27 Shevat 5766

Friday, February 26

Saturday, February 27

Torah Portion: Exodus 21:1-24:18

Shabbat Mishpatim

Service at 8:00 p.m.

Shabbat Worship at 10:30 a.m.

Haftarah: II Kings 12:5-16

February 2006

3 Shevat 5766 - 30 Shevat 5766

Sunday	Monday	Tuesday	Wednesday	Thursday	Friday	Saturday
			1 3 SHEVAT 12:00 pm Lunch and Learn 6:15 pm Etz Chayim meets 7:30 pm Kol Emet meets 7:30 pm Taste of Judaism	2 4 SHEVAT	3 5 SHEVAT 4:56 7:30 pm Family Service	4 6 SHEVAT Bo Shabbat Ends: 6:07 9:10 am Torah Study 10:30 am Shabbat Service 8:00 pm Wine Tasting
5 7 SHEVAT 11:15 am Family Holiday Fun for 3 to 5 year olds with Beth Rosen 1:00 pm Confirmation Class meets with Rabbi 6:00 pm Overflow Shelter	6 8 SHEVAT 10:45 am Speak, Laugh, Enjoy Yiddish	7 9 SHEVAT 7:00 pm Strategic Planning Meeting 7:30 pm Jewish Learning Project study session	8 10 SHEVAT 12:00 pm Lunch and Learn 6:15 pm Etz Chayim meets 7:30 pm Kol Emet meets 7:30 pm Taste of Judaism	9 11 SHEVAT 8:00 pm Bd. of Trustees Mtg. Feb. Bulletin Deadline	10 12 SHEVAT 5:05 8:00 pm Shabbat Service	11 13 SHEVAT Beshalach Shabbat Ends: 6:16 9:10 am Torah Study 9:30 am Tot Shabbat 10:30 am Shabbat Service Bat Mitzvah of Anna Gionet 6:30 pm EMTY meets
12 14 SHEVAT Lincoln's Birthday 9:00 am 4th gr. Family Ed Day 10:00 am Tu B'Shevat Seder 6:00 pm Overflow Shelter	13 15 SHEVAT Tu B'Shevat 10:45 am Speak, Laugh, Enjoy Yiddish	14 16 SHEVAT	15 17 SHEVAT 12:00 pm Lunch and Learn 6:15 pm Etz Chayim meets 7:30 pm Kol Emet meets	16 18 SHEVAT 6:30 pm Strategic Planning Meeting	17 19 SHEVAT 5:13 10:00 am Membership Meeting 8:00 pm Music Service	18 20 SHEVAT Yitro Shabbat Ends: 6:24 9:10 am Torah Study 10:30 am Shabbat Service Bat Mitzvah of Naomi Scher
19 21 SHEVAT 6:00 pm Overflow Shelter	20 22 SHEVAT Washington's Birthday (observed) BUILDING CLOSED	21 23 SHEVAT ECC AND R.S. CLOSED 7:30 pm Lit. from a Jewish Perspective	22 24 SHEVAT ECC AND R.S. CLOSED 7:30 pm Kol Emet meets	23 25 SHEVAT ECC CLOSED	24 26 SHEVAT 5:21 ADULT KALLAH AT PEARL RIVER HILTON BEGINS 8:00 pm Shabbat Service	25 27 SHEVAT Mishpatim Parashat Shekalim Shabbat Ends: 6:33 9:10 am Torah Study 10:30 am Shabbat Service Adult Kallah P.R. Hilton
26 28 SHEVAT Adult Kallah P.R. Hilton 6:00 pm Overflow Shelter	27 29 SHEVAT 10:45 am Speak, Laugh, Enjoy Yiddish	28 30 SHEVAT Rosh Chodesh Adar - Day 1 7:30 pm Lit. from a Jewish Perspective 8:00 pm Exec. Comm. Mtg. 8:40 pm The Future of Islam and Judaism				

GOOD & WELFARE

Condolences to...

Jeanette Grunstein on the loss of her
beloved brother, Theodore Simson

Mazel Tov to....

Muriel and Lyle Breitfopf on the birth of
their new grandson, Jacob Barna,
son of Susan and Joshua Fried

Welcome to membership...

Michele and Brett Norton

Get Well Wishes to...

Lew Archer

Enid Broder

HOLD THESE DATES!

PURIM IS COMING!

PURIM IS COMING!

Sunday, March 12th

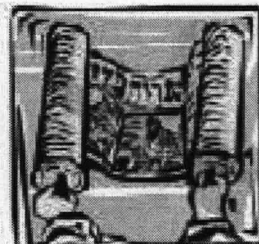
Purim Carnival

9:30 a.m. to 1:30 p.m.

and

Monday, March 13th

Megillah Reading - 7:30 p.m.

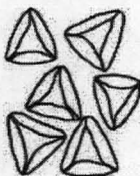


PURIM 2006 PURIM 2006 PURIM 2006 PURIM 2006 PURIM 2006 PURIM 2006 PURIM 2006

DON'T FORGET TO GET YOUR ORDER IN!!!

SHALACH MANOT 2006

Deadline for orders has been extended to February 13



We also need volunteers:

Packing date: Thursday, March 9, 2006

1:00 p.m.-7:00 p.m.

Delivery date: Sunday, March 12, 2006

at your convenience, beginning at 9:00 a.m.

Besides adult workers, we welcome teenagers and older children.

It's a lot of fun, and is a great way to get some community service credit:

****Mitzvah projects for your Bar/Bat Mitzvah**

****High school community service**

For more information, an order form, or to volunteer, call

Judy Fox (836-0260), Eva Tobias (836-1497) or Carol Levy (833-8388)

you may also download the order form and return it to the office:

www.emeth.org



PURIM 2006 PURIM 2006 PURIM 2006 PURIM 2006 PURIM 2006 PURIM 2006 PURIM 2006

PURIM 2006 PURIM 2006 PURIM 2006 PURIM 2006 PURIM 2006 PURIM 2006 PURIM 2006

PURIM 2006 PURIM 2006 PURIM 2006 PURIM 2006 PURIM 2006 PURIM 2006

**Please Join Us for This Year's Gala Event
Aboard the SS Emeth**

May 13, 2006

All Aboard: 7:30 p.m.

**Port Of Call: 1666 Windsor Road
Teaneck, New Jersey**

Featuring:

Tumbling Dice Entertainment, Inc.

**Black Jack, Craps, Roulette, Poker, Big Six Wheel,
Bingo, Bridge and Slots**

**Cocktails at Sunset,
a Bistro-Style Dinner,
Delectable Desserts**

Duty Free Shops

Onboard Photographers

Chip Exchange and the Chance to Win Extraordinary Prizes

Tickets Include Free Chips for the Captain's Lounge

Price is based on your Date of Booking:

January/February \$54 per ticket

March \$72 per ticket

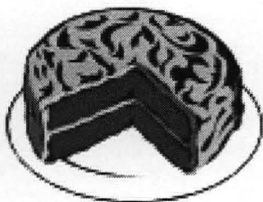
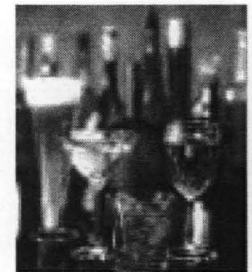
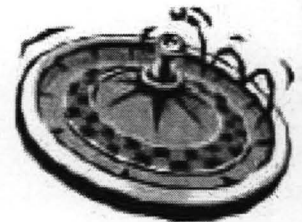
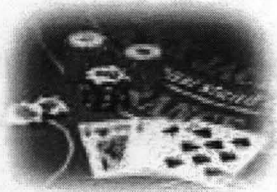
April \$90 per ticket

May \$108 per ticket

Tickets on Sale at the Temple

Emeth Office or by Mail

(postmark determines ticket price)




December 26, 2005

To the Editor,

This letter is a protest against the November 20th resolution at the Biennial of the Union for Reform Judaism expressing opposition to the nomination of Judge Alito to the U. S. Supreme Court. After reading the press release and the newspaper accounts, I feel that this action was premature, ill conceived, and inappropriate, and unfairly condemned a man about whom we know very little. By doing this the Union injected itself into the political dynamics of the nomination process.*

My views regarding Judge Alito are not defined as yet. I will await the Senate hearings to provide same. It is the only fair thing to do. Call it "due process" if you will.

Sincerely yours,



Paul I. Bookstaver M.D.

* Rabbi Sirbu referred to the resolution in his January column.

Temple Emeth College Kids

By Lynne Graizel

Every now and then it's necessary and also nice to thank people who have been instrumental in making our College Kids program a success.

While I am the Chairperson of the Committee it takes a lot of people to make our programs successful. Here are a special few I'd like to single out and thank:

Gloria Barsky, the Chairperson of Temple Emeth's Arza Committee, recently helped fund the registration of all of the college kids so that they could vote in the upcoming **World Zionist Organization** election. We sent them the money to register, a copy of Vicki Farhi's High Holiday speech urging every eligible voter to voice his/her opinion, and we even sent them a stamp so there was no excuse not to vote. I hope everyone reading this column has also registered to vote.

Also on the thank you list is **Marty Dubno** who has mailed the Shalot Manot packages every Purim for a number of years. The students really appreciate getting the "goody packages."

Another very special person is **Carla Silver**. Not only did Carla get me started with this mission, but she also brings the Purim packages to Marty each year and helps me deliver the Chanukah gifts as well.

In a Keshet (college Jewish youth group) chat line with other Chairpeople at synagogues across the country, I'm happy to report that Temple Emeth has one of the most active college kids groups of any of them.

To all these Temple angels and to all of you who work hard to keep our college age kids connected to Emeth, I say thank you so very much!

Next month: the adventures of Max Chaiken in Israel— stay tuned.

HELP THE BERGEN COUNTY ANIMAL SHELTER!

AS PART OF MY MITZVAH PROJECT I AM ASKING FOR YOUR HELP TO SUPPORT THE BERGEN COUNTY ANIMAL SHELTER

by donating:

Clean sheets, towels, blankets or comforters
Clean bird cages, rabbit hutches, pet carriers or dog crates

Purina Pro Plan dry dog food

Dry puppy food

Canned dog food (preferably Science Diet)

Dry cat food (preferably Deli Cat)

Dry kitten food (preferably Purina One)

Canned cat and kitten food

Milkbone dog biscuits - Large or small size

Cat treats such as - Pounce

Cat toys

Kitty litter

Kitten milk replacer - canned or powdered

Clean dog and cat bowls

Strained meat baby food

New heating pads

Clean, small, stuffed animals for kittens to cuddle with!

Unscented baby wipes

Toilet paper, paper towels

Cleaning products - bleach, dish soap, hand soap, sponges, Windex, green scrubbies, dust pans & brushes

Newspapers

I will be collecting until my Bat Mitzvah date, March 19, 2006. Any questions?

Contact Rebecca Dillon at daisypep@optonline.net

You can put the items in the box right by the entrance to the Temple. THANK YOU!

Rebecca Dillon



Temple Emeth's 4th Annual Wine Tasting Party

Saturday,

February 4th, 2006

8 p.m.



Please join us for a unique and yummy evening with a culinary expert – Pat Romero.

This year we will enjoy matching different food flavors with wine.

Ms. Romero has been a lecturer and moderator for the New Jersey Restaurant Association, Women's Foodservice Forum, the Roundtable for Women in Foodservice and the Elliot Hospitality Forum. Presently, she is Executive Vice-President of EQ International Perspectives, Inc. and is a Certified Hospitality Educator. She has taught at Gibbs College in NYC, the Restaurant Association, Whole Foods Market, along with a number of public & private schools.

"Pat is a dynamo whose excitement about food and wine will permeate you (and your taste buds)."

Ken Rutz

This promises to be a fun evening. Reserve early and bring your friends.

Yes, I'm/We're eager to enjoy an evening drinking and eating!!!

Name: _____

Address: _____

Phone # _____ Email _____

Number of Reservations _____ @ \$35.00 each (\$40.00 at the door)

Total Enclosed \$ _____

Return form and check by February 1st to:

Temple Emeth, 1666 Windsor Road, Teaneck, N.J. 07666. Attention: Ken Rutz



Congregational Seder

Thursday, April 13th at 6:00 p.m.

Mark your calendars, so you,
your family and your guests can join your Emeth friends
at the annual Temple Seder
for the second night of Pesach

Volunteers welcome.
kssacks@optonline.net

CONTRIBUTION FORM

\$ _____ Enclosed (\$10 minimum) Fund Name _____

Contributed by _____

Send Acknowledgment to: _____

Address _____

Message _____

Contributory Funds – contributions are deposited in the Temple Emeth Funds Account and drawn for use by the designated committee

- | | | |
|--|--|---|
| • Adult Education Fund | • Albert & Mildred Otten Institute for Living Arts | • Paul S. Lazar Caring Community Fund |
| • Children's Worship Fund | • College Kids Fund | • Environment Fund |
| • Abe Golumb Religious School Scholarship Fund | • Early Childhood Center Fund | • Inscribed Prayerbook Fund |
| • Library Fund | • Ilana Hed Religious School Fund | • Outreach Fund |
| • Prayerbook Fund | • Music Fund | • Margery Rothschild Memorial Israel Fund |
| • Rabbi Louis J. Sigel Scholar-in-Residence Fund | • Social Action Fund | • Straussman Memorial Youth Award Fund |
| • Temple Emeth Beautification Fund | • Temple Emeth Fund | • Torah Repair Fund |
| • Joshua Trachtenberg Memorial Lecture Fund | • Yahrzeit Fund | • Youth Committee Program Fund |
| • Youth Fund | | |

Endowed Funds – contributions are added to principal held by the Temple Emeth Endowment Foundation with fund income distributed yearly

- | | | |
|---|---|---------------------------------------|
| • Adult Kallah Scholarship Fund | • Honigberg/ Howard Religious School Scholarship Fund | • Lazar Educational Enrichment Fund |
| • Paul S. Lazar Caring Community Endowed Fund | • Alfred and Helen Levin Youth Award Fund | • Rabbi Louis J. Sigel Endowment Fund |
| • Ned and Doris Siner Music Fund | • Temple Emeth Endowment Fund | • Youth Scholarship Fund |

Tzedakah Funds – contributions are distributed to various beneficiary agencies by the Social Action Committee

- | | | | |
|--------------------------|------------------|------------------------------|---------|
| • Center for Food Action | • General Grants | • Inter-Religious Fellowship | • Mazon |
|--------------------------|------------------|------------------------------|---------|

Other Funds – contributions are used at the discretion of the recipient.

- | | |
|------------------------------|-------------------------------|
| • Rabbi's Discretionary Fund | • Cantor's Discretionary Fund |
|------------------------------|-------------------------------|

Lynn Zimmering, M.A. CEC

Certified Professional Empowerment Coach

Career and life coaching in confidential phone sessions

~ FORWARD VISION COACHING ~

Create your new reality

Why creep when you have the impulse to soar?

201-960-5744

lynn@forwardvisioncoaching.com

www.forwardvisioncoaching.com

FRAN LEEMAN

Private Mathematics Tutor
Elementary through High School



(201) 944-1046

(201) 214-9629

*Please support our advertisers
and tell them*

you saw their ad in the Temple Emeth Bulletin

HOWARD M. KAPLAN ATTORNEY-AT-LAW

42 YEARS EXPERIENCE

MEMBER,
NATIONAL ACADEMY OF ELDER LAW
ATTORNEYS

PERSONAL INJURY
MUNICIPAL COURT
BANKRUPTCY
REAL ESTATE LAW
WILLS & ESTATES
GENERAL LITIGATION

1086 Teaneck Road

P.O. BOX 78

Teaneck, NJ

E-MAIL: HOWARD.KAPL@AOL.COM

Telephone# 201-833-4300 Fax # 201-833-4680

Memories of Chanukah...

Many thanks to all who helped to make our 6th Annual Chanukah Dinner such a great success! What a wonderful turnout of friends and members — longtime and newcomers, adults (young and seasoned) and families with children. New member families who joined us in 2005 were welcomed as special guests.

The Membership Committee would like to especially thank congregant June Cohen, (who served as co-chair with Membership) for all her help. Also, a special thanks to Karen Kaplan, Ruth Adler, Judy Berke-Levine, Elaine Pollack, Susan Schwartz, Sharon Kalman, Judy Distler and Carlene Fleishman for the set-up and smooth running of the kitchen and for all their hard work as committee members, and to Rabbi Sirbu, Rabbi Nafshi, Cantor Tilem & Etz Chayim, for making our Chanukah dinner a warm, spiritual and festive celebration.

We look forward to celebrating Chanukah next year with you all!

Shana Janoff & Carol Shansky
Membership Committee



Athens Bakery
Cakes • Breads • Pastries
Birthday Cakes
Baked Daily



201-287-0399

161 Cedar Lane
Teaneck, NJ 07666

(201) 836-2567
1-800-332-LYNN



ARIE ARBEL

Flowers by Lynn Ltd.

167 CEDAR LANE • TEANECK, NEW JERSEY 07666



RICHARD S. GERTLER, D.M.D.
LEONID S. ITSKOV, D.D.S.

MICHELLE BLOCH, D.D.S.
SHEELPA SHAH, D.M.D.

DRS. BLOCH & GERTLER

General Dentistry

100 STATE STREET • TEANECK, • NEW JERSEY 07666

201-837-3000 Fax 201-837-0997

www.teaneckdentist.com

**Foster Village
Kosher Delicatessen**

Dine In or Dine Out



CATERING
for
House & Office
Parties
Kiddush
Bar/Bat mitzvah

**COME IN
FOR LUNCH**
Daily Specials
Eat-In, Take-Out

**FULL DELI
HOMEMADE SOUPS
HOT DISHES
SALADS
APPETIZING**

469 S. Washington Ave. • Bergenfield, N.J.
Corner Washington Ave. & New Bridge Rd.

201-384-7100 • Fax: 201-384-0303

TEMPLE MEMBER!



SETH KANE, M.D.
ORTHOPEDIC SURGEON
277 FOREST AVENUE
PARAMUS, NJ
201-261-7980

ADULT & PEDIATRIC
JOINT SURGERY - SPORTS MEDICINE
FRACTURES - ARTHRITIS - SPRAINS
BACK PAIN

OWNED BY A TEMPLE MEMBER!

*Make an
Impression*

Stacy F. Lawrence
201-261-2777
By Appointment
fax 201-261-6077
712 Kinderkamack Rd.
River Edge, N.J. 07661

www.invitationsdirect.com

invitations • theme decorations • centerpieces • favors •



(201) 836-5247
FAX (201) 836-1857
LICENSE NO. 01161-A

DeGraw Service Center

"YOUR COMPLETE AUTO CARE CENTER"

- COLLISION REPAIR • BRAKES & TRANSMISSIONS
- PAINTING & WELDING • AIR CONDITIONING & HEATING

335 QUEEN ANNE ROAD
TEANECK, NJ 07666

RAY BARBARINI
OWNER

Your Hosts: The Matthews Family

WESTWOOD

Diner
&
Pancake House



Matthews

Diner
&
Pancake House

301 Old Hook Road
Westwood, NJ 07675
Tel: (201) 664-7455
Fax: (201) 664-3663

430 So. Washington Ave.
Bergenfield, NJ 07621
Tel: (201) 385-9496
Fax: (201) 385-8140



MICHAEL D. ROBINSON, D.D.S.

FAMILY DENTISTRY

349 UNION BLVD. • TOTOWA, N.J. 07512

973-942-3800



ELLIOT W. STEINBERG
Sales Associate

(201) 446-0839 DIRECT LINE
(201) 837-8800 x14 OFFICE
(201) 836-5959 FAX

RUSSO REAL ESTATE

873 Teaneck Road
Teaneck, NJ 07666
E-Mail elliottsteinberg@optonline.net



Kindred Spirits

a matchmaking service



Marie J. Peterson

Matchmaker & Relationship Consultant

201-801-0245

www.kindredspiritsmatchmaking.com

since 1954

Bergen County Reform Temple Memorial Association

A non-profit organization
Serving Temple Emeth and Congregation Beth Am

Burial plots at reasonable prices

at Beth Am:
Irwin Brownstein
836-9444

at Temple Emeth:
David Fox 836-0260
Eric Loeb 692-0211

Guterman-Musicant Funeral Directors

402 Park Street, Hackensack, NJ 07601
1-800-522-0588

Arthur Musicant, Mgr. N.J. Lic. No. 2544
Alan Musicant, N.J. Lic. No. 2890

Serving the Jewish community with dignity and compassion
www.GutermanMusicantWien.com

Wien & Wien Inc. Memorial Chapels

129 Engle Street, Englewood, NJ 07631 402 Park Street, Hackensack, NJ 07601
201-569-2404 201-489-6125
Barry Wien, Mgr. N.J. Lic. No. 2885 Barry Wien, Mgr. N.J. Lic. No. 2885
Robert P. Szegetl N.J. Lic. No. 3586
1-800-322-0533
152 2nd Ave. New York, NY 10003 (212)-285-9659



STEVEN LEEMAN
REALTOR ASSOCIATE / SALES REPRESENTATIVE

CLASSIC REALTY GROUP

2050 Center Avenue, Suite 100
Fort Lee, NJ 07024

Office: 201-585-8080 x139

Fax: 201-585-8558

Cell: 201-970-9726

Email: steveleems@aol.com



U.S. & Worldwide
Express - Expedited - Ground
Free Packaging Materials

FedEx
Federal Express

FedEx SHIPPING CENTER

(Next to Roy Brown Middle School)

150 S. Washington Ave.
Bergenfield, N.J. 07621
(Free Parking In Back)

Tel. (201) 385-7757
Fax (201) 385-7740
Mon.-Sat. 6 am-6 pm

Weichert

Wendy Wineburgh Dessanti
Sales Representative
Weichert President's Club



2003
Weichert
Realtors

office 201.569.7888
fax 201.569.1631
cell 201.310.2255
WendyDess@aol.com

13 W. Railroad Ave.
Tenafly, NJ 07670



CONTRIBUTIONS

ADULT EDUCATION FUND

Bea & Alan Westin in honor of the new home of
Teri & Fred Binder

ADULT KALLAH FUND

Bev & Sy Lazar sending get well wishes to
Joel Sachs
sending get well wishes to Linda Poskanzer
sending get well wishes to Paul Kaufman
in memory of Marvin Nissenblatt, brother of
Carol Geller

CAPITAL CAMPAIGN FUND

Marion Schechter and the office staff in gratitude
to Shirley & Gil Rosenzweig for the
wonderful Chanukah gift

ILANA HED RELIGIOUS SCHOOL FUND

In Memory of Ilana Hed:
The Packles Family
Nancy, Ken, Marjorie & Naomi Scher
Arlene Fraitag & Scott Straub
The Etzin Family
Marc Klausner in gratitude to Jill & Barry Kantor
Marc Klausner in gratitude to Lori & John Moses
Nickie Falk in memory of her beloved father, Meyer
Millman

COLLEGE KIDS FUND

Nickie & Doug Falk in gratitude to Lynne Graizel

LIBRARY FUND

Lorraine & Jerome Fisch sending get well wishes
to Enid Broder

INSCRIBED LIBRARY BOOK

Geri Kaufman in memory of her beloved husband,
Herbert Kaufman
Eileen & Carl Nahm in memory of Rabbi Sigel

DORIS AND NED SINER MUSIC FUND

Laura Kirsch in gratitude to Lynn Chaiken, Sheryl
Cooper, Sy Lazar, Carla Silver, Marion Wolf,
Sue Keusch, Lucy Brody and Pauline Hecht
Nickie Falk in memory of her beloved grandmother,
Anna Solomon
Veronica & Bruce Lubatkin in honor of Elliot
Plotkin

PAUL S. LAZAR CARING COMMUNITY FUND

Teri & Fred Binder in honor of the Bar-Mitzvah of
Max, grandson of Esther & Milton Mendelsohn
in honor of the birth of Noah Eric Green, new
grandson of Elaine & Joe Pollock
sending get well wishes to Howard Guttman
in memory of Beatrice Binder, mother of Fred
Ada Mae Stein sending regards to all Temple families
Flora Braunschweiger in memory of Herbert Frank
Leonard Braunschweiger in memory of Herbert
Frank
Stuart Breslow in gratitude to the caring community
Bev & Sy Lazar in memory of Herbert Frank, brother
of Flora Braunschweiger
Bea & Alan Westin in gratitude for the friendship of
Elinor & Richard Buchbinder

RABBI LOUIS J. SIGEL ENDOWMENT FUND

Marian & Rubin Ferziger

RABBI SIRBU DISCRETIONARY FUND

Stuart Breslow in gratitude to Rabbi Sirbu
Elinor & Richard Buchbinder
Loretta Weinberg in gratitude to Rabbi Sirbu
Wendy Kosakoff & David Kohane in gratitude for
Josh's Bar-Mitzvah

RABBI LOUIS J. SIGEL SCHOLAR-IN-RESIDENCE FUND

Barbara & Paul Kaufman sending get well wishes to
Linda Poskanzer
Marian & Rubin Ferziger

SOCIAL ACTION FUND

Marc Klausner in honor of the Bar-Mitzvah of Josh
Kohane

TEMPLE EMETH BEAUTIFICATION FUND

Bev & Sy Lazar sending get well wishes to Abby
Schlectman
Bea & Alan Westin sending get well wishes to Paul
Kaufman
sending get well wishes to Enid Broder
in honor of the birth of Noah Green, new
grandson of Elaine & Joe Pollack
in honor of the new home of Glenda & Marty
Adelman
in honor of Carol Shansky's acceptance to the
doctoral program at B.U.

CONTRIBUTIONS

TEMPLE EMETH FUND

Lenore Roth in honor of the wedding anniversary of
Estelle & Robert Spiewak

YAHREZEIT FUND

Laurel & Seth Kane in memory of Leonard Ehrlich
Carlene Fleishman in memory of Bernard E. Marx
Ruth Meissner in memory of Arthur Meissner
Barbara & Michael Bias in memory of Rhoda Bias
Shelly Fierman in memory of Joseph Cappello
Debby Saloway in memory of Steven Saloway
Bev & Sy Lazar in memory of Dorothy Rosenfeld
Bev & Sy Lazar in memory of Lottie Brownstein
Sandy Loft in memory of Sophie Lifschitz
Dione Danis in memory of Seymour Lefton
Muriel Pader in memory of Sophie Pader

Marc Klausner in memory of Joseph Klausner, Myra
Klausner, H. Sarah Klausner, Louis Shifrin,
Esther Shifrin, Edith Cohn, & Fern Dawn
Klausner

Jeanette Grunstein in memory of Marilyn Herzog

Sidney Broder in memory of Jack Broder

Glenda & Martin Adelman in memory of Alice
Sorsher

June Handler in memory of Grace Moss

Judith Bitterman in memory of David Bitterman

Flora Braunschweiger in memory of
Walter Frank

Leo Braunschweiger

Gerald Spiro in memory of J. Wilbur Spiro

Marian L. Ferziger in memory of Roberta Friedman

Edith & Kenneth Fox in memory of Otto Becker

Temple Emeth Recycles: You Can, Too!

Did you know that...

Plastic products use huge amounts of oil in production.

Each year, over 19 MILLION barrels of oil are saved when new cans are produced from recycled ones.

One recycled glass bottle or jar saves enough energy to light a 100-watt bulb for 4 hours.

Lets all conserve energy and reduce our need for foreign oil.

Here's how you can help:

Recycle cans, plastic bottles and jars and glass bottles and jars. (Rinse them with clear water before putting them in the recycling bin, otherwise, they attract insects.)

Recycle plastic bags

Use them over and over. Line your wastebaskets with them. If you accumulate too many, take them to the nearest supermarket that has a bag recycling bin.

Watch for further recycling ideas from

The House Committee



DON'T FORGET TO BUY SCRIP

You can buy gift cards at the Temple:

Office
9:00AM – 5:00PM
Monday – Friday

Main Lobby
10:30AM – 11:30AM
Sunday morning

Gift Shop
10:00AM – 1:00PM
Sunday

or by contacting gift card captains:

Ted Greenwood
595 Ramapo Road
Teaneck, NJ 07666
201-692-8156

Don Kaplan
145 Stonehurst Drive
Tenafly, NJ 07670
201-568-5189

Sy Lazar
280 Prospect Avenue, #3K
Hackensack, NJ 07601
201-498-9563





Temple Emeth
1666 Windsor Road
Teaneck, New Jersey 07666



UNITED STATES POSTAGE
PITNEY BOWES
02 1P
0002380183 JAN 26 2006
\$00.630
MAILED FROM ZIP CODE 07666

Emeth

The Bulletin of Temple Emeth of Teaneck, New Jersey
An Affiliate of the Union for Reform Judaism
Serving Reform Congregations in North America

Klau Library-Hebrew Union College
Jewish Institute of Religion
3101 Clifton Ave.
Cincinnati, Ohio 45220