

## LIVING WITH TERROR - MORALITY vs. SECURITY

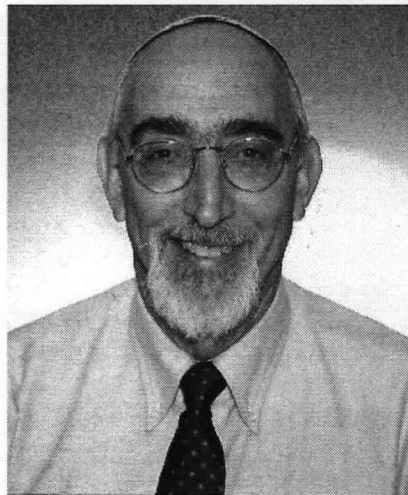
### A Lecture You Can't Afford to Miss

*The act of terror and Israel's response to it, threatens not only the body of Israel, but also its soul.*

Rabbi David Forman will be the guest speaker at Friday night services March 10th to discuss how to balance the absolute need for Israel to defend itself against terrorism and the necessity of maintaining one's moral equilibrium.

Rabbi Forman, a native of Boston moved to Israel more than 30 years ago. As the former director of the Israel office in Jerusalem of the Union for Reform Judaism, he has been instrumental in building programs that bridge the Israel Diaspora divide. He is the founding chairman

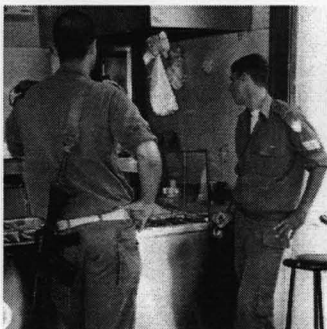
of Israeli Rabbis for Human Rights and the former director of the Israel Office of the Union for Reform Judaism. Author of four books, he has lectured extensively around the world on human rights and social justice issues.



Rabbi Forman will be joining us for a special Shabbat dinner that night, starting at 6:00 p.m. Services will follow at 8:00 p.m.

If you'd like to attend the dinner...make sure your check (\$25.00 per person) is in the Temple office by March 3rd.

*For more information,*  
contact Elaine Pollack - 201-385-2085 or  
[elaine33@opton.net](mailto:elaine33@opton.net).



*Photographs by Sue Keusch and Carla Silver*

◆ ◆ ◆ ◆ ◆ **TEMPLE E METH** ◆ ◆ ◆ ◆ ◆

1666 Windsor Road  
Teaneck, New Jersey 07666  
Main Office # 833-1322 School Office # 833-8466

RABBI . . . . . Steven Sirbu  
RABBI EMERITUS . . . . . Louis J. Sigel z"l  
CANTOR . . . . . Ellen S. Tilem  
ASSISTANT RABBI . . . . . Robin Nafshi  
RELIGIOUS SCHOOL EDUCATOR . . . . . Dora Geld Friedman  
EARLY CHILDHOOD DIRECTOR . . . . . Sharon Floch



TEMPLE ADMINISTRATOR. . . . . Marion Schechter  
BOOKKEEPER . . . . . Mary Espiritu  
ADMINISTRATIVE ASSISTANT. . . . . Sandra Rumayor  
SCHOOL ADMINISTRATOR. . . . . Barbara Sabella



PRESIDENT. . . . . Dan Firshein 287-9067  
FIRST VICE-PRESIDENT. . . . . William Graizel 833-8403  
SECOND VICE-PRESIDENT. . . . . Madelyn Wolf 585-0393  
THIRD VICE-PRESIDENT. . . . . Rhona Herman 836-1946  
SECRETARY. . . . . Marc Chelemer 569-4877  
ASSISTANT SECRETARY. . . . . Wendy Kosakoff 880-6324  
FINANCIAL SECRETARY. . . . . Michael Robinson 692-0779  
ASSISTANT FINANCIAL SECRETARY. . . . . Richard Buchbinder 837-0694  
TREASURER. . . . . Steve Packles 692-9881  
ASSISTANT TREASURER . . . . . Jeffrey Etzin 722-0405



EDITOR. . . . . Sandi Klein 837-3850  
GRAPHIC DESIGN. . . . . Barbara Balkin 261-6218



| <i>Bulletin Deadlines</i> |                      |                         | <i>Mid-Month Mailing Deadlines</i> |                         |
|---------------------------|----------------------|-------------------------|------------------------------------|-------------------------|
| <u>Month</u>              | <u>Deadline Date</u> | <u>Publication Date</u> | <u>Deadline Date</u>               | <u>Publication Date</u> |
| March                     | February 9           | February 23             | March 1                            | March 15                |
| April                     | March 9              | March 23                | April 3                            | April 14                |
| May                       | April 6              | April 20                | May 3                              | May 16                  |
| June                      | May 11               | May 25                  | June 1                             | June 15                 |
| Midsummer                 |                      |                         | July 18                            | July 28                 |

**From the Editors -**

There's no room at the Inn! In order to make sure everyone's article/blurb/important announcement makes it into the Bulletin, we have to insist that they are no longer than half a page.

*Remember - flyers are for the mid-month mailing.* Thank you in advance for your cooperation.

Sandi Klein/Barbara Balkin

Material for the bulletin is welcome and essential for the success of the publication; however, it is necessary to honor the deadlines as listed.

For the Bulletin mailings, all material **must** be submitted by 8:00 p.m. on the date of the deadline.

Please submit all material by e-mail to sandifk@aol.com and Barbara Balkin - dkrm505@yahoo.com

We cannot guarantee publication of items submitted on paper.

For Mid-month mailings, all materials (either camera ready art or information to be included in the body of the Mid-month sheet) are due by **12:00 noon** on the date of the deadline.

The Temple Emeth Bulletin is published monthly from September through June

**Advertising Rates for Ad Size 2" x 3 1/2"**

|           | Member | Non-Member |
|-----------|--------|------------|
| 1 Month   | \$ 50  | \$ 75      |
| 5 Months  | \$225  | \$350      |
| 10 Months | \$300  | \$450      |

For additional information, call (201) 833-1322



# Message From the Rabbi

The story of Purim has multiple approaches to dealing with an enemy of the Jewish people. When Mordecai first informs Queen Esther of the murderous plot of Haman, her first emotion is fear. She fears being killed, of course, but she knows that to use her influence with the king, she must approach him without being summoned, something which is punishable by death.

In response, she declares a fast among all the Jews. She invokes divine protection through a tradition of introspection and self-denial. With her "request" for divine protection in place, she then musters the courage to approach the king and succeeds in winning his favor.

In the next scene, we see Esther sitting down at a banquet table with Haman. Their coexistence at the same table is facilitated by a layer of secrecy; the king does not yet know of Haman's scheme, and neither Haman nor the king knows that Esther is Jewish.

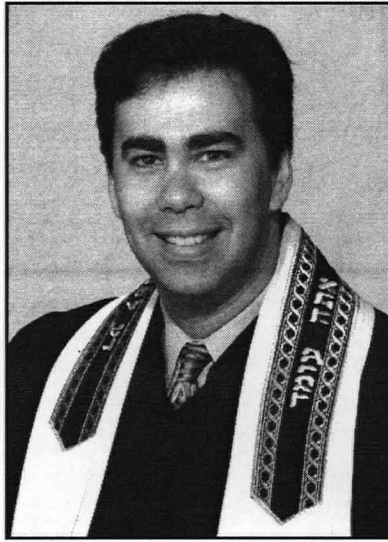
Nonetheless, Esther willingly sits down at the table with a man dedicated to killing her because she believes it is the best way to thwart his plan and survive. Esther's dining room diplomacy catches Haman off guard and stirs the king's indignation.

The king corrects the injustice revealed to him by allowing the Jews to defend themselves. But the text makes me question whether they are acting solely out of self defense or whether they crossed the line to revenge. In two days, the Jews kill over 75,000 men. Their response is joy and relief, but my response the first time I read this was pure shock. (For this reason, in virtually all Reform Jewish classrooms and Purim services, the 75,000 casualties are eliminated—one of several ways the text is sanitized when it is abridged.)

Today, we prepare for Purim with our usual festiveness and silliness. But at the same time a new enemy sworn to our destruction has arisen next to Israel.

The Hamas terror organization, which, like

Haman, is dedicated to destroying the Jews, rode a wave of popularity to victory in the Palestinian parliamentary elections in January. No one really knows what this will mean until the Hamas candidates take office, and the situation will probably remain murky until after Israelis go to the polls in late March. Yet our options in dealing with this enemy parallel the Book of Esther.



Rabbi Steven Sirbu

Like Esther, my first response to the Hamas victory was fear. Interestingly, I couldn't pinpoint what exactly I feared, but I suppose I feared more bloodshed, attacks and reprisals. Though I didn't fast like Esther, I did pray for peace in Israel. And I anticipate this fear will continue until it is clear who the political players on both sides will be.

Fear, however, must eventually give way to courage. The months and years ahead will likely require the Israeli people to be courageous. It's hard to say which requires more courage in the Middle East: making war or making peace. But just as 20 years ago, no Jew would have imagined sitting down at the table with the PLO, we must remember Esther's banquet and not rule out sitting down with this new enemy at some time in the distant future if it will save Jewish lives. It, of course, will take no small amount of courage, diplomacy, and wisdom to pull this off.

Finally, we must always beware of the potential for self-defense to cross the line into excess. Despite the Bible's justification, those 75,000 shocked me and forever changed my view of the Book of Esther. Similarly, we know when military actions shock the conscience, and as Jews we know that the Torah obligates us to uphold a high moral standard.

The most famous verse from the Book of Esther is a song of celebration. In these difficult times, I also read it as a declaration of hope: "The Jews enjoyed light and gladness, happiness and honor."

Ken yehi ratzon—May this be God's will.

## Message From the President

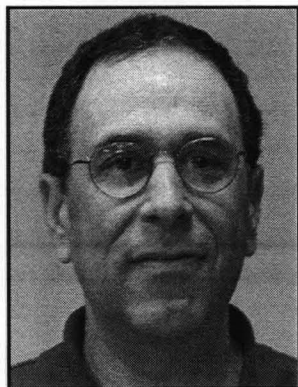
*"You should not look at the bad things in your life and say, "Now I will improve myself". Rather you should look at your positive traits and dwell upon your goodness. From there you can say, "Now, I will improve myself."*

- Rabbi Nahman of Bratslav

We at Temple Emeth are in quite a different place with quite a different mood than we were 3- 4 years ago. Thanks to many dedicated members, our Board of Trustees, the Executive Committee, our Strategic Planning Committee, all our committees and volunteers, we are improving in many ways and, in fact, I think we are surging ahead. Going forward, you will notice new programs, new activities and events. You'll also see new or revitalized commit-

tees. This month alone we welcome two groups: the Outreach Committee is just about up and running - we look forward to hearing more from David Zatz and the group. The Couples Club will be holding its first event - a karaoke night on Saturday night March 4th - so come and join us! Call Brian and Stacy Lawrence for details at 201.836.8764. More good things are on the way... including a Rosh Chodesh Women's Group this Spring. Watch your mail for details.

I noticed this new sense of vitality at two events in February as well. First, our annual Wine Tasting on Saturday the 4th drew a large and friendly crowd and everyone had a great time. Kudos to Ken Rutz for putting together a fun evening demonstrating how food flavors can influence wine. Secondly, the Adult Ed. committee presented Divan, an intriguing autobiographical film previously shown at the Tribeca Film Festival. The film follows the story of a young woman who left her Chasidic family to live a more secular life. Pearl Gluck, who directed the film fielded plenty of questions from the sizeable crowd.



Speaking of being in a different place, I am writing this from a different place - The Pearl River Hilton, the lovely setting for our annual TE Adult Kallah put together by Bev Lazar and Carlene Fleischman. This winter retreat features prayer, songs, study sessions with 3 Rabbis, tons of food (I feel like I'm on a cruise ship) and a friendly warm bunch of congregants. Think about including this weekend getaway on your schedule next year!

So what's coming up this month? Purim! That means Judy Fox and team will be delivering Shalach Manot goodies to all who signed up. That means the Sunday morning Purim Carnival, as well as our Purim Service with the reading of the Megillah. (I can't wait to see your reaction to Rabbi Sirbu's and Cantor Tilem's costumes this year - come and see!) Also in March, Stewart May and the Adult Ed. committee have scheduled a 3 session series entitled: "Judaism and Islam" featuring a guest Rabbi and Imam, which will culminate in a visit to a mosque during a service. Also in March, here's your chance to learn how to blow the shofar - in a 2 session program beginning Sunday morning March 26th.

Finally, this year's gala committee headed by Cynthia Massarsky and Michael Robinson have a really fun event scheduled for May: **A Casino Night** right in our own social hall with a cruise ship theme. It will feature food, gaming, music, prizes and more. I'm mentioning it now because the earlier you sign up, the less expensive the admission price. And don't worry, no gaming experience is necessary. So join us - if you've been to our gala before, you know how much fun they can be.

B'shalom  
Dan Firshein  
President

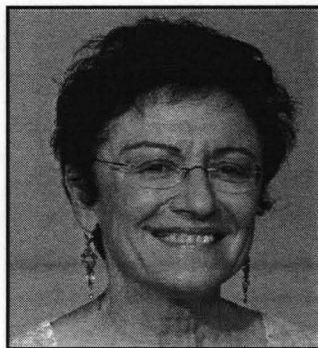


## From the Religious School

### **"Be Happy – It's Adar"**

Our tradition, in its infinite wisdom, instructs us that when we come into the month of Adar, we need to "increase our happiness". As we approach the celebration of Purim, which falls in the month of Adar, how does this instruction challenge us? How does this mandate instruct us, students and families alike, to live a more meaningful, joyous, Jewish life?

On its simplest level, Purim celebrates the "hidden" (Esther, masks) and "revealed" – Mordechai, the proud Jew. This holiday of Purim inspires us to examine our faith and imbue it with meaning and personal dedication. In Temple Emeth Religious School, both parents and students are examining, struggling, and dedicating themselves to serious questions of Jewish identity and practice. Our students are involved in learning through a variety of strategies: text, art, music, guest lecturers and artists - a variety of Jewish experiences that will weave for them memories and connections to our Jewish tradition.



Here are some examples:

Grade 5 and 6 have led inspiring services demonstrating fluency and an understanding of the importance of prayer in their lives and in our school community. The 4<sup>th</sup> grade is busy learning Hebrew "code" words, blessings and prayers that connect them to the Jewish past, present, as well as to their Jewish future. Our 7<sup>th</sup> grade students have been enriched with the challenging seminars led by our Rabbi Sirbu, Cantor Tilem, and Rabbi Nafshi. Our family educational programs for grades K-7 are well attended and students, teachers and parents enjoy learning, discussing singing and dancing - in short, creating a dynamic Jewish community.

The study of Torah in grades K-3, prayer – tfilah, and celebration of the holidays with "joy" add meaning and purpose to our lives.

*And the month was turned from sorrow to gladness from mourning to joy. (The Megillah - Scroll of Esther)*

B'vracha,  
Dora Geld Friedman

## From the Early Childhood Center

As the holiday of Purim approaches, bright colors and silly characters begin to fill the halls of the ECC. The children are introduced to the curious cast of characters who constitute this topsy-turvy tale of heroism, faith and turning the tables on an evil plan and man. Excitement fills the air as everyone prepares his own grogger, mask, crown and costume. The delicious scent of hamantashen permeates the classrooms. Everyone joins together to decorate the rooms and fill them with the joyous spirit that accompanies the celebrations soon to come.

As in years past, the children of the ECC will, once again, have the chance to fulfill all four of the related mitzvot for Purim:

### Matanot L'Evyonim – Giving gifts to the poor

On Monday, March 13, all of the children will participate in a Walk-A-Thon around the social hall dance floor. The children have sponsors who have pledged money for their worthy efforts, and the combined donations will be presented to a charity. Recipients in past years have been Project Ezra, Jewish Family Services



and Magen David Adom.

### Mishloach Manot

Each child will be preparing two "baskets" of fruits and baked goods. One will be to give to their families; the other to exchange with children from another class.

### Kriyat HaMegillah – Reading of the Megillah

After the children parade around in costume, they will hear an abbreviated version of the Megillah presented by the director and the Rabbi. When they hear the name of Haman, they will try to obliterate his name with the noise of their classroom-made groggers.

### Seudat Esther – the Feast of Esther

The children will return to their rooms after the Walk-A-Thon to enjoy a well-earned feast of Hamantashen and treats. This will be a delicious way to celebrate a fun-filled holiday.

**From all of us to all of you,  
CHAG PURIM SAMEACH!!**

Sharon Floch,  
ECC Director

## This Year's Spring Gala Event!

An Evening aboard the "HMS Temple Emeth"

(Over 21 only)



### CASINO NIGHT



Sail Date: **May 13, 2006**

Boarding Time: **7:30 P. M.**

Port Of Call: 1666 Windsor Road, Teaneck, NJ

Featuring:

**Tumbling Dice Entertainment, Inc.**

**Black Jack,**

**Poker,**

**Craps,**

**Roulette,**

**Big Six Wheel,**

**Bingo,**

**Bridge**

**&**

**Slots**

**Cocktails at Sunset, a Bistro-Style Dinner,  
Delectable Desserts**

**Duty Free Shops**

**Onboard Photographers**

**Chip Exchange and the Chance to Win**

**Extraordinary Prizes**

**Jewelry • Furs • Vacation Home Rentals •**

**Electronics**

*(No chips will be exchanged for cash!)*

(Cut here and send in with your payment to reserve your passage!)

**Mail to: Temple Emeth, 1666 Teaneck Road,  
Teaneck, NJ 07666**

**Purchase Your Passage Early and Save \$\$\$**

Now thru March 1st - \$54/Ticket

Thru April 1st - \$72/Ticket

Thru May 1st - \$90/Ticket

Thru May 13th and at the Door - \$108/Ticket

**Name** \_\_\_\_\_

**Number of Guests** \_\_\_\_\_

**Date Ordered** \_\_\_\_\_

(Postmark verification will determine price)

Need more information?

Contact Cynthia Massarsky at 201-871-3159

or visit our web site: [www.emeth.org](http://www.emeth.org)

*Temple Emeth*



## Renaissance Group



Invites you to bring the family and  
promenade on down to Temple Emeth

**Sunday, March 26<sup>th</sup>, 2:30 p.m.,**

for a fun afternoon of

### SQUARE DANCING!

*No experience necessary.*

*Professional caller Andy Woerner will show you how.*

**Partners not needed - we'll match you up.**

Admission: \$10 in advance by March 20th;

\$15 at the door.

**Refreshments will be served.**

For more information, contact

Laurel Kane, 201-262-1943, [LKANEPHD@aol.com](mailto:LKANEPHD@aol.com)

*Please return coupon with check to the Temple office by March 20th.*

Yes, I/we want to square dance on March 26, 2006.

Name(s) \_\_\_\_\_

Phone \_\_\_\_\_

Email \_\_\_\_\_

Enclosed \$ \_\_\_\_\_ (@ \$10 each before March 20<sup>th</sup>)



*Temple Emeth*

## Renaissance Group

Invites you to join us on

**Sunday, April 23, 2006 at**

**The New York Botanical Gardens  
& Mario's Restaurant in the Bronx**

We'll start with lunch at Mario's, an Arthur Avenue landmark. At the Botanical Gardens, we'll board our docent-led tram for a comprehensive guided tour. After the tour, you're welcome to explore the landmark Conservatory, see the Spring Flower Show, visit the Gift Shop, and stroll through the beautiful gardens.

**Our deluxe motor coach leaves Temple Emeth at**

**11 a.m. and returns approximately 5:30 p.m.**

Cost is \$55 for Renaissance members, \$65 for guests.

Includes transportation, lunch, admission fees, and all gratuities; *reserve early as space is limited.*

For more information contact:

Elaine Pollack, 201 385-2085, [elaine33@optonline.net](mailto:elaine33@optonline.net)

Barbara Kaufman, 385-8433, [BKaufmanNJ@aol.com](mailto:BKaufmanNJ@aol.com)

Make checks payable to the Temple Emeth Renaissance Group; return coupon below to the Temple office by April 15

Count me/us in to visit the New York Botanical Gardens

Name(s) \_\_\_\_\_

Phone \_\_\_\_\_

E-Mail \_\_\_\_\_

Enclosed is \$ \_\_\_\_\_ @ \$55 Renaissance members,

\$65 guests

My/our lunch choice is: ☐ Veal Parmigiana

☐ Chicken Francaise ☐ Filet of Sole Scampi



# Rabbi Joshua Trachtenberg Memorial Library Update:

A LIVING LEGACY  
by MARION WOLF

## ASSOCIATION OF JEWISH LIBRARIES ACCREDITATION

*When Rabbi Louis J. Sigel arrived at Temple Emeth in 1960, the memory of his predecessor was fresh in people's minds. Rabbi Joshua Trachtenberg, author and scholar, was loved by his congregation.*

When he died suddenly in 1959, his widow gave several thousand volumes from his private collection to the synagogue, and that was the beginning of the library that still bears his name.

This past June Temple Emeth suffered another loss, with the death of our beloved Rabbi Sigel. Like Rabbi Trachtenberg before him, Rabbi Sigel was a brilliant scholar who touched many lives. As a congregation, we reached out to Rabbi Sigel's family to offer our condolences. Now Mimi Sigel has generously donated books that belonged to her husband to add to our Rabbi Joshua Trachtenberg Memorial Library. We gratefully acknowledge this gift, this living legacy.

Visitors to the library can easily identify which books were Rabbi Sigel's. Inside the front cover of each is a bookplate that is shown here. The lyre pictured on the bookplate is a symbol of the Levites (Rabbi Sigel was a Levite) and a tribute to Rabbi Sigel's musical talents. Across the top the Hebrew "S'gan I'cohanim" means "assistant to the priests," again a reference to the

Levites and the origin for the family name **Sigel**. The die for these bookplates had been a gift from his future mother-in-law to Rabbi Sigel when he and Mimi were engaged.

*So what sorts of books have come to us from Rabbi Sigel? If you ever heard him preach, you're aware that he knew a great deal about a great many*

things. So it should come as no surprise that his books, well-annotated in his own handwriting (in several languages!), reveal his wide-ranging interests. There are Torah commentaries and books on Talmudic logic. There are volumes of literature, philosophy, history, and archaeology. Some trace the development of Conservative or Reconstructionist Judaism; others delve into Christian theology. There is poetry. There are grammar texts about Hebrew and Aramaic (Palestinian or Babylonian, take your pick). There are some odd-

ities: a Yiddish New Testament and the notorious Protocols of the Elders of Zion. Other books offer in-depth analysis of some of Rabbi Sigel's favorite topics, such as Servant-Songs in Deutero-Isaiah.

*Please come to our library and browse. Look through some of these books for yourself. Great discoveries await you.*



**Temple Emeth's Adult Choir Kol Emet will be  
a part of the Regional Choir Festival  
MARCH 19, 2006 3:00 p.m.**

at TEMPLE SINAI in SUMMIT, NJ

**Shiru Shir Chadash:**

**Let Us Sing A New Song**

CO-SPONSORED BY:

TEMPLE SINAI, SUMMIT, NJ

AMERICAN CONFERENCE OF CANTORS (ACC) N J-WEST  
HUDSON VALLEY COUNCIL

Editors' Note:

Space in the Bulletin is limited. Therefore, please limit articles submitted for future issues to a **maximum** size of a half page. Send via email to sandifk@aol.com and dkrm505@yahoo.com

*Your cooperation is greatly appreciated.*

Full page flyers should be sent to the Temple office for the Mid-month mailing.



## FOR WOMEN ONLY!

### JOIN US IN THE FIRST EVER (IN RECENT HISTORY) CELEBRATION OF **ROSH CHODESH**

#### WITH RABBI NAFSHI

Rosh Chodesh is a vehicle for women to deepen their connection to Jewish life, to build bridges to each other, and to find within themselves sources of wisdom and spirituality that might have been previously untapped.

In Hebrew Rosh Chodesh literally means "head of the month," and has long been recognized as a WOMEN'S HOLIDAY. In ancient times, it was a very significant festival day, announced by the sounding of the shofar. The Talmud states women are exempt from work. Rashi delineates the activities from which they may refrain: spinning, weaving, and sewing; these are the skills which women so enthusiastically contributed to the building of the Tabernacle.

Why do women merit such a special monthly holiday? In the incident of the Golden Calf, they refused to relinquish their earrings to the men who were building it. As a reward, God gave them an extra holy day each month, free from work. It is customary to wear new clothing on Rosh Chodesh, in celebration of the day's special meaning!

At the first of three sessions on **Wednesday, March 29<sup>th</sup>** at 7:30 p.m. Rabbi Nafshi will discuss Beruriah, a woman of the Talmud — what she teaches us, what she taught the Rabbis of the Talmud, and how she is viewed in history.

**SESSION 2: Wednesday, May 3<sup>rd</sup>**  
**SESSION 3: Wednesday, May 31<sup>st</sup>**

Rosh Chodesh at Temple Emeth is sponsored by the Adult Education Committee.  
For further information contact Eva Sandrof at 201-837-2241

## NEWS FROM SOCIAL ACTION

We are very excited about Temple Emeth's joining the Coalition for the Elizabeth Detention Center.

**Joe Chuman**, Leader of the Ethical Culture Society  
will talk to us about the situation of asylum seekers at the Center on

**FRIDAY NIGHT, APRIL 14TH**

We also plan to arrange for Temple members to visit the Center so that we can see for ourselves what the conditions there are.

**MORE INFORMATION TO COME!**

The Mitzvah for this month is personal size toiletries for the homeless.  
**BRING IN THOSE SAMPLES YOU GET IN HOTEL ROOMS.**

We are again hosting the overflow shelter for the homeless every Sunday during the months of February and March. Thanks to Bill and Dana Graizel and Paul Wilson for organizing this effort. We can still use sleepers for some Sundays in March.

## Services and Smachot

**4 Adar 5766**

Friday, March 3

**Shabbat Terumah**

Family Service at 7:30 p.m.

**The Oneg will be sponsored by Gail Talcoff and Robert Staffin  
in honor of the Bat Mitzvah of their daughter, Leah Staffin**

Saturday, March 4

Shabbat Worship at 10:30 a.m.

### **BAT MITZVAH OF LEAH STAFFIN**

*Torah Portion: Exodus 25:1-27:19*

*Haftarah: 1 Kings 5:26-6:13*

**11 Adar 5766**

Friday, March 10

**Shabbat Tetzaveh**

Shabbat Service at 8:00 p.m.

**The Oneg is being sponsored by Sara and Barry Gallob  
in honor of the Bat Mitzvah of their daughter, Jessica Gallob**

Saturday, March 11

Tot Shabbat at 9:30 a.m.

Shabbat Worship at 10:30 a.m.

### **BAT MITZVAH OF JESSICA GALLOB**

*Torah Portion: Exodus 27:20-30:10*

*Haftarah: Ezekiel 43:10-27*

**18 Adar 5766**

Friday, March 17

**Shabbat Ki Tissa**

Music Service at 8:00 p.m.

**The Oneg is being sponsored by Paula and Michael Dillon  
in honor of the Bat Mitzvah of their daughter, Rebecca Dillon**

Saturday, March 18

Shabbat Worship at 10:30 a.m.

### **BAT MITZVAH OF REBECCA ANNE DILLON**

*Torah Portion: Exodus 30:11-34:35*

*Haftarah: Ezekiel 36:22-36*

**25 Adar 5766**

Friday, March 24

**Shabbat Mishpatim**

Shabbat Service at 8:00 p.m.

**The Oneg is being sponsored by Ann and Steve Packles  
in honor of the Bar Mitzvah of their son, Jonathan Packles**

Saturday, March 25

Shabbat Worship at 10:30 a.m.

### **BAR MITZVAH OF JONATHAN PACKLES**

*Torah Portion: Exodus 35:1-40:38*

*Haftarah: Ezekiel 45:16-25*

# March 2006 1 Adar 5766 - 2 Nisan 5766

| Sunday   | Monday   | Tuesday  | Wednesday  | Thursday   | Friday   | Saturday  |
|--|--|--|--|--|--|---|
|  |  |  | 1<br>1 ADAR<br>12:00 pm Lunch and Learn<br>6:15 pm Etz Chayim meets<br>7:30 pm Kol Emet meets  | 2<br>2 ADAR<br>7:30 pm Confirmation Parents' Meeting               | 3<br>3 ADAR<br>5:29<br>7:30 pm Family Service  | 4<br>4 ADAR<br>Terumah<br>Shabbat Ends: 6:41<br>9:10 am Torah Study<br>10:30 am Shabbat Service<br>Bat Mitzvah of Leah Staffin<br>7:30 pm Couples Club<br>Karaoke Night       |
| 5<br>5 ADAR<br>9:00 am 6th grade B'nai Mitzvah Orientation<br>9:30 am Board Workshop<br>6:00 pm Overflow Shelter   | 6<br>6 ADAR<br>10:45 am Speak, Laugh, Enjoy Yiddish  | 7<br>7 ADAR<br>7:30 pm Lit. from a Jewish Perspective<br>8:40 pm Judaism and Islam   | 8<br>8 ADAR<br>6:15 pm Etz Chayim meets<br>7:30 pm Kol Emet meets  | 9<br>9 ADAR<br>8:00 pm Board of Trustees Meeting                   | 10<br>10 ADAR<br>5:37<br>6:00 pm Shabbat Dinner<br>8:00 pm Shabbat Service with Guest Speaker, Rabbi David Forman                                    | 11<br>11 ADAR<br>Tetzaveh<br>Parashat Zachor<br>Shabbat Ends: 6:48<br>9:10 am Torah Study<br>9:30 am Tot Shabbat<br>10:30 am Shabbat Service<br>Bat Mitzvah of Jessica Gallob |
| 12<br>12 ADAR<br>9:00 am Shalach Manot Delivery<br>9:30 am Purim Carnival<br>10:00 am Caring Comm. Mtg.<br>11:15 am Outreach Comm. Mtg<br>11:30 am Museum Reception<br>6:00 pm Overflow Shelter        | 13<br>13 ADAR<br>Fast of Esther<br>9:30 am ECC Walkathon<br>10:30 am ECC Megillah<br>10:45 am Speak, Laugh, Enjoy Yiddish<br>7:30 pm Megillah Reading<br>Purim Celebration | 14<br>14 ADAR<br>Purim<br>5:00 pm Religious School Dinner<br>7:30 pm Adult Ed visit to the Darul Islah Mosque                          | 15<br>15 ADAR<br>12:00 pm Lunch and Learn<br>6:15 pm Etz Chayim meets<br>7:30 pm Kol Emet meets  | 16<br>16 ADAR  | 17<br>17 ADAR<br>5:45<br>10:00 am Membership Committee Meeting<br>7:00 pm Pot Luck Dinner<br>8:00 pm Music Service                                   | 18<br>18 ADAR<br>Ki Tisa<br>Parashat Parah<br>Shabbat Ends: 6:56<br>9:10 am Torah Study<br>10:30 am Shabbat Service<br>Bat Mitzvah of Rebecca Dillon                          |
| 19<br>19 ADAR<br>10:30 am B'Yachad Breakfast<br>11:00 am 2nd gr. Fam. Ed. Day<br>1:00 pm Outreach Coffee and Chat<br>2:00 pm URJ Choral Festival at Temple Sinai in Summit<br>6:00 pm Overflow Shelter | 20<br>20 ADAR<br>10:45 am Speak, Laugh, Enjoy Yiddish  | 21<br>21 ADAR<br>7:00 pm Strategic Planning Meeting<br>7:30 pm Lit. from a Jewish Perspective<br>8:40 pm Passover Text and Tradition   | 22<br>22 ADAR<br>12:00 pm Lunch and Learn<br>6:15 pm Etz Chayim meets<br>7:30 pm Kol Emet meets  | 23<br>23 ADAR  | 24<br>24 ADAR<br>5:52<br>8:00 pm Shabbat Service   | 25<br>25 ADAR<br>Vayakhel - Pekude<br>Parashat Hachodesh<br>Shabbat Ends: 7:03<br>9:10 am Torah Study<br>10:30 am Shabbat Service<br>Bar Mitzvah of Jonathan Packles          |
| 26<br>26 ADAR<br>8:45 am 7th gr. trip /Dorot NY<br>9:00 am Passover Parenting Workshop<br>11:00 am Shofar Blowing Wkshp<br>2:00 pm Renaissance Square Dance<br>6:00 pm Overflow Shelter                | 27<br>27 ADAR<br>10:45 am Speak, Laugh, Enjoy Yiddish  | 28<br>28 ADAR<br>7:30 pm Lit. from a Jewish Perspective<br>8:00 pm Executive Committee Meeting<br>8:40 pm Passover Text and Traditions | 29<br>29 ADAR<br>12:00 pm Lunch and Learn<br>6:15 pm Etz Chayim meets<br>7:30 pm Kol Emet meets<br>7:30 pm Rosh Chodesh Women's Discussion with Rabbi Nafshi | 30<br>1 NISAN<br>Rosh Chodesh Nisan<br>7:00 pm Israel Trip Reunion | 31<br>2 NISAN<br>6:00<br>6:30 pm 5-7th grade Shabbat Dinner<br>8:00 pm Shabbat Service<br>7th grade will lead Service<br>Marti Roland, Guest Speaker |   |



## **GOOD & WELFARE**

The congregation mourns the loss of long time member **Enid Broder** and extends condolences to her husband **Sid Broder**

### **Condolences to...**

**Stan Kotkin** on the loss of his beloved father,  
Max Kotkin

**Laurel Kane** on the loss of her beloved aunt,  
Lillian Bayer

### **Welcome to membership...**

**Inna Broveman, and Ira Morrow and  
daughter, Marina Morrow**

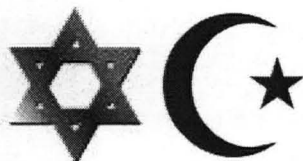
\*\*\*\*\*

## **Adult Education Programs**

### **"Judaism and Islam"-**

Tuesday, March 7 at 8:40 p.m.

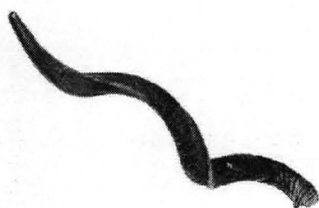
On March 14 at 7:30 p.m. the group will take a field trip to the local Teaneck Mosque. Our guest presenters at these sessions are sure to make them thought-provoking, especially in light of recent events.



### **Shofar Blowing Workshop**

Sunday, March 26th and April 2nd at 11:00 a.m.

Our veteran shofar blower, Jessica Firshein will lead this workshop to help train the Temple's next talented shofar blower.



For further information, contact Stewart May  
at 201-907-0823

# **Celebrate Purim**

**at Temple**

**Emeth**

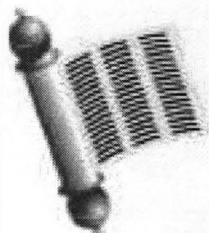
**Sunday,**

**March 12th at 9:30 a.m.**

**Purim Carnival in the**

**Social Hall**

**Get ready for Purim by playing  
games and eating snacks at our  
annual Purim Carnival. Fun for  
all ages!**

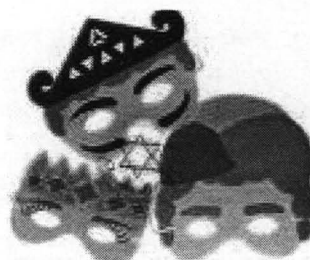


**Monday,**

**March 13th at 7:30 p.m.**

**Purim Services and  
Megillah Reading**

**Wear your costume and bring  
your grogger as we sing our  
prayers to silly tunes and hear  
the heroic story of Esther.  
See how the Rabbis and Cantor  
will dress up this year.**



## UPDATE: TEMPLE EMETH YOUTH

### Temple Emeth College Kids

By Lynne Graizel

This month's guest writer is Max Chaiken. Max graduated from Teaneck High School in 2004 where he was a National Honors Society member and a well-known actor in many of the school's musical and dramatic productions. Instead of heading straight to Brown University, Max opted to defer college for one year and headed to Israel to be part of **Carmel: A Progressive Beit Midrash and Israel Study Program**. Here's what Max has to say about his experience in Israel.

*On September 12, 2004, eight high school graduates from around the United States traveled to Israel to become part of the Carmel Program, hosted by the University of Haifa and the Leo Baeck Education Center. Until January, many of us had been planning to continue with the status quo — attending a university or college back in the United States. Many of us had never even been to Israel before. But even in the short period of the few months in which we were learning and considering the program, I for one realized that there was a large part of my Jewish experience that had not yet been fulfilled.*

*My experience was life altering. No, there was not any single moment where I said, "my life has never been the same," but rather, I came to realize that the lifelong quest for Jewish learning and the lifelong struggle with defining my Jewish identity only began in Israel. Israel was the opening of the flood-gate in the desire for Jewish knowledge and living. I will remember the small experiences like being thrust into a Shuk (marketplace) on the second day of our trip with little to no experience communicating in Hebrew; the powerful yet subtle Rabbinical ordination ceremony of the head of our program; the wonderful Shabbat dinners with host families and programs and the spirited Shirim afterwards.*

*I will remember the powerful experiences of spending 10 days studying and traveling through Jerusalem; taking a Slichot night-tour of Tiberias that ends watching the sunrise over the kinneret; spending a month in the desert on kibbutzim learning about desert agriculture and hiking and exploring. Yet*

*regardless of what I remember, Carmel gave me a tremendous opportunity: the opportunity to define my Jewish identity and my Jewish and Zionist values in a setting that had never previously existed. With the opportunity to travel the country in which Jewish history was created; to take on an intensive academic course load at a premier Israeli University; to study in a Progressive Beit Midrash paralleled by no other; to become a stronger Jew; with these opportunities I became a stronger Jew and a stronger leader.*

Max's experiences in Israel changed his life. A trip to Israel can broaden and enrich everyone's life. So even if your child doesn't participate in the **Temple Emeth College Kids** program, he/she can still participate in many of the Kesher sponsored events.

I hope that every college age student will consider going on the Birthright trip to Israel.

### TEMPLE EMETH YOUTH GROUP

Temple Emeth's Youth group is alive and well with lots of events planned for the Spring. The fun begins with the annual Purim and Costume Party - Saturday, March 11th. It's open to kids from grades K-12. The Youth Group (grades 8-12) will stay on to set up the Purim Carnival which will be held the following day from 9:00am to 1:00pm.

The 4th Annual Family Ice Skating event is scheduled for March 19th from 3:30-5:30 at the Ice House in Hackensack. The entire rink's been rented for just us! Pizza's included.

Winter's been a busy season for the Youth Group with several Lounge and Movie nights, as well as a successful Shul-in and Family Snow Tubing Day. All were very well attended.

Check your mail for upcoming events and if you have any questions, please contact Michael Baer at 201-703-4386.



## Support the Temple Emeth Religious School's Annual Passover Candy Sale

The Passover Candy Sale is a major fundraiser for our religious school and we need your support and participation! The Order Forms will be available in the Temple Hallway and at the Religious School Office. The sale will begin on February 12, 2006. Deadline for turning in orders is Sunday, March 5th.

Make all Checks payable to: "Temple Emeth". The products will be distributed on Sunday, April 2nd. Thank you for your support.

If you have any questions, please contact Paula Dillon at [daisypep@optonline.net](mailto:daisypep@optonline.net) or 201-692-0609, or simply call the Religious School office at 201-833-8466. Thank you for making this important event a BIG success.

## HELP THE BERGEN COUNTY ANIMAL SHELTER!

*AS PART OF MY MITVAH PROJECT I AM ASKING FOR  
YOUR HELP TO SUPPORT THE BERGEN COUNTY  
ANIMAL SHELTER*

*by donating:*

Clean sheets, towels, blankets or comforters  
Clean, bird cages, rabbit hutches, pet carriers or dog crates  
Purina Pro Plan dry dog food  
Dry puppy food  
Canned dog food (preferably Science Diet)  
Dry cat food (preferably Deli Cat)  
Dry kitten food (preferably Purina One)  
Canned cat and kitten food  
Milkbone dog biscuits - Large or small size  
Cat treats such as - Pounce  
Cat toys  
Kitty litter  
Kitten milk replacer - canned or powered  
Clean dog and cat bowls  
Strained meat baby food  
New heating pads  
Clean, small stuffed animals for kittens to cuddle with!  
Unscented baby wipes  
Toilet paper, paper towels  
Cleaning products - bleach, dish soap, hand soap, sponges, windex, green scrubbies, dust pans & brushes  
Newspapers

I will be collecting until my Bat Mitzvah date, March 19, 2006.  
Any questions? Contact me at [daisypep@optonline.net](mailto:daisypep@optonline.net)  
You can put the items in the box right by the entrance to the Temple. THANK YOU!

Rebecca Dillon

## "The Fruits of our Sweet (Super) Mitzvah"



For the past five years, our families, the Schers and the Janoffs, have participated in a program at our Synagogue in which we host an area overflow shelter during the winter months. Each Sunday evening in the months of February and March, a dozen or so homeless people come to our Temple and we provide them with dinner and overnight accommodations. We have cooked and served dinner to our homeless guests once a year, and joined them in the meal and conversation.

We decided, as a special B'nai Mitzvah project, to raise money and purchase a new TV and VCR/ DVD for this program since the TV that was available was old and did not work well. We decided to raise money for this by having a Thanksgiving Cake and Pie Sale, this past fall.

We are very happy to say that we raised more than enough money to buy the TV with VCR/DVD and are planning to buy a ping-pong table as well for the youth of the Temple.

We thank everyone who donated money and who participated in the cake sale, and we hope that you enjoyed the cakes!

Ari Janoff and Naomi Scher

Visit the Temple Emeth website at  
[www.emeth.org](http://www.emeth.org)





## The Ritual Committee

By Marion Wolf

"You're often at Friday night services," someone said to me several years ago. "Why don't you come to a Ritual Committee meeting?"

I had no idea exactly what this committee did. I didn't feel I had any special knowledge or qualifications for it. But it was nice to be asked, and I was curious, so I went to a meeting.

Years later, I'm still here and now chairing the committee. Since worship lies at the heart of synagogue life, one of the main reasons for our existence, I want to understand why we worship as we do. Perhaps you, too, are interested in our practices. If so, let me tell you a bit about the Ritual Committee.

The members of this committee, working in close partnership with our clergy, strive to make our worship services meaningful and beautiful for the whole congregation. We want services to run smoothly, and much of what we do is behind the scenes. We distribute honors, take care of ritual objects, and arrange *minyanim* for people sitting *shiva* (Pauline

Hecht has been doing yeoman duty on this last-mentioned job for many years). When you break your fast on Yom Kippur, you can thank a member of the Ritual Committee, who has poured the juice and sliced the challah.

Every one of our committee meetings begins with a chance to learn more about our tradition, so we can make wiser, better-informed decisions about rituals at Temple Emeth. Cantor Tilem has spoken to us about the role of instrumental music in services. Rabbi Sirbu has taught us about particular prayers (the grace after meals), songs (*L'Cha Dodi*), and objects—showing us up-close the silver ornaments on our scrolls and explaining their significance. For me, these lessons enhance my experience at services and allow me to participate in the committee's discussions.

Over the years we have addressed a great variety of issues. What is appropriate attire on the *Bima*? How should a Reform congregation observe Shabbat? When should services be held? How many people should be called for *aliyot*?

Soon we will be looking over Mishkan Tefilah, the Reform movement's new prayer book. Would you like to join us? You are most welcome, and after three meetings' attendance you are eligible to vote on the issues before us. Our next meeting is Thursday, April 20, 2006 at 7:30 pm. I'd be happy to answer any questions you might have and extend a more personal invitation: [marionewolf@yahoo.com](mailto:marionewolf@yahoo.com). I hope to hear from you soon!

## MUSEUM COMMITTEE NEWS

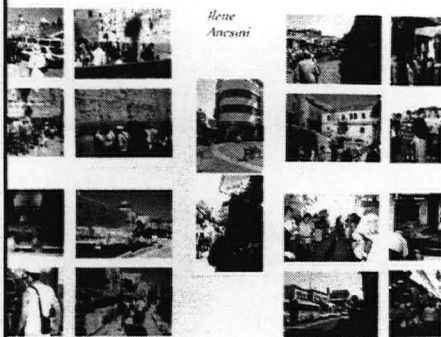
### The Temple Emeth Jewish Experiential Museum

Announces the opening  
of a new exhibit,

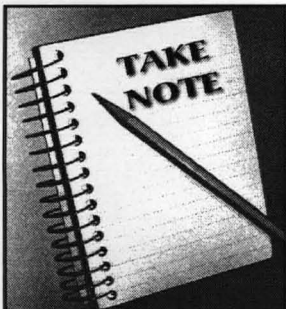
## Emeth in Israel,

Photographs by members  
of Temple Emeth

who went on the tour of Israel  
led by Rabbi Sirbu during  
August of 2005.



We invite you to an  
Opening Reception on  
Sunday, March 12, 2006  
at  
11:30 a.m.  
*Refreshments will be served.*



### **Please Note:**

The course on  
**"Developments in  
Jewish Liturgical  
Music,"**

originally scheduled to  
begin on March 21

has been rescheduled for:  
**Tuesdays, April 25, May 2 and May 9 at  
8:00 p.m.**

In its original time, the Adult Education  
Committee proudly offers this course:

**Passover in Text and Tradition**  
**Tuesdays, March 21, March 28 and April  
4 at 8:40 p.m.**

The themes of redemption, freedom and faith that are so fundamental to Passover echo throughout our sacred texts, especially those related to this festival. Join with Rabbi Sirbu as he presents texts from Torah, Talmud, Midrash and the Haggadah which are sure to enrich your holiday and enliven your Seder.

### **Temple Emeth Outreach Presents...**



**Bagels and Chat  
on the topic:**

**"The Challenges  
of Passover and Easter for  
Interfaith Families"**

**Sunday, March 19, 2006 at 1:00 p.m.**

Passover and Easter can be challenging for interfaith families striving to respect everyone. Deciding who is invited to the Seder, how Passover's dietary rules are observed in relatives' homes, and other questions can bring grief at what should be a time of joy.

Join Rabbi Steven Sirbu and Dru Greenwood, the former national Director of Outreach for the Union for Reform Judaism, for a discussion on these issues and other challenges facing interfaith families.

Coffee and bagels will be served. Babysitting is available for those who RSVP to the Temple by Wednesday, March 15.

## **B'YACHAD**

**SUNDAY, MARCH 19, 2006**

**Rabbi Robin Nafshi will**

**lecture on:**

### **"DOES PRAYING FOR THE ILL WORK?"**

As rational, thoughtful, post-modern Jews, do we believe that when we call out a name for the MISHEBEIRACH PRAYER, God will listen and bring healing? What if a loved one doesn't recover? Is this person deserving of God's healing? If our loved one does not get better, has God intervened? If we don't believe that God responds to our prayers in such a way, then why do we go through this ritual every week? Do we say names so that others know we are concerned about specific people? Do we say names so the ill people know others care about them? What if the ill people don't know others are praying for them?

**RSVP NO LATER THAN MARCH 10TH**

(Please include your payment of \$5.00 per person)

Name \_\_\_\_\_

Number Attending \_\_\_\_\_

Amount Enclosed \_\_\_\_\_

Phone \_\_\_\_\_

E-mail \_\_\_\_\_

All B'yachad breakfasts begin with a short service at 10:00 am. The breakfast starts at 10:30 am.

If you do not RSVP by March 10th, you will be welcome to attend the lecture, but will not be able to join us for the breakfast.

*Mark your calendar*

**Thursday, April 13th - 6:00 p.m.**

**For Temple Emeth's Annual  
Congregational Seder**

**Rabbi Sirbu leads us in one of the greatest stories ever told...Marc Klausner and Richard Buchbinder lead us in song. Plan your second night of Pesach at Temple Emeth.**

**For early-bird reservations or to volunteer:**

**Email [kssacks@optonline.net](mailto:kssacks@optonline.net) or**

**[lorimoses@aol.com](mailto:lorimoses@aol.com)**

***Credit is available for b'nai mitzvah students  
who help.***

## CONTRIBUTION FORM

\$ \_\_\_\_\_ Enclosed (\$10 minimum) Fund Name \_\_\_\_\_

Contributed by \_\_\_\_\_

Send Acknowledgment to: \_\_\_\_\_

Address \_\_\_\_\_

Message \_\_\_\_\_

**Contributory Funds** – contributions are deposited in the Temple Emeth Funds Account and drawn for use by the designated committee

- |  |  |   |
|--|--|---|
| • Adult Education Fund                           | • Albert & Mildred Otten Institute for Living Arts | • Paul S. Lazar Caring Community Fund     |
| • Children's Worship Fund                        | • College Kids Fund                                | • Environment Fund                        |
| • Abe Golumb Religious School Scholarship Fund   | • Early Childhood Center Fund                      | • Inscribed Prayerbook Fund               |
| • Library Fund                                   | • Ilana Hed Religious School Fund                  | • Outreach Fund                           |
| • Prayerbook Fund                                | • Museum Fund                                      | • Margery Rothschild Memorial Israel Fund |
| • Rabbi Louis J. Sigel Scholar-in-Residence Fund | • Ritual Fund                                      | • Social Action Fund                      |
| • Temple Emeth Beautification Fund               | • Temple Emeth Fund                                | • Straussman Memorial Youth Award Fund    |
| • Joshua Trachtenberg Memorial Lecture Fund      | • Yahrzeit Fund                                    | • Torah Repair Fund                       |
| • Youth Fund                                     |  | • Youth Committee Program Fund            |

**Endowed Funds** – contributions are added to principal held by the Temple Emeth Endowment Foundation with fund income distributed yearly

- |   |   |                                       |
|---|---|---------------------------------------|
| • Adult Kallah Scholarship Fund               | • Honigberg/ Howard Religious School Scholarship Fund | • Lazar Educational Enrichment Fund   |
| • Paul S. Lazar Caring Community Endowed Fund | • Alfred and Helen Levin Youth Award Fund             | • Rabbi Louis J. Sigel Endowment Fund |
| • Ned and Doris Siner Music Fund              | • Temple Emeth Endowment Fund                         | • Youth Scholarship Fund              |

**Tzedakah Funds** – contributions are distributed to various beneficiary agencies by the Social Action Committee

- |                          |                  |                              |         |
|--------------------------|------------------|------------------------------|---------|
| • Center for Food Action | • General Grants | • Inter-Religious Fellowship | • Mazon |
|--------------------------|------------------|------------------------------|---------|

**Other Funds** – contributions are used at the discretion of the recipient.

- |                              |                               |
|------------------------------|-------------------------------|
| • Rabbi's Discretionary Fund | • Cantor's Discretionary Fund |
|------------------------------|-------------------------------|

**Lynn Zimmering, M.A. CEC**

Certified Professional Empowerment Coach  
Career and life coaching in confidential phone sessions

~ FORWARD VISION COACHING ~

*Create your new reality*

Why creep when you have the impulse to soar?

201-960-5744

[lynn@forwardvisioncoaching.com](mailto:lynn@forwardvisioncoaching.com)

[www.forwardvisioncoaching.com](http://www.forwardvisioncoaching.com)

**FRAN LEEMAN**

Private Mathematics Tutor  
Elementary through High School



(201) 944-1046

(201) 214-9629

*Please support our advertisers  
and tell them*

*you saw their ad in the Temple Emeth Bulletin*

**HOWARD M. KAPLAN  
ATTORNEY-AT-LAW**

*42 YEARS EXPERIENCE*

MEMBER,  
NATIONAL ACADEMY OF ELDER LAW  
ATTORNEYS

**PERSONAL INJURY  
MUNICIPAL COURT  
BANKRUPTCY  
REAL ESTATE LAW  
WILLS & ESTATES  
GENERAL LITIGATION**

1086 Teaneck Road  
P.O. BOX 78  
Teaneck, NJ

E-MAIL: [HOWARD.KAPLAN@AOL.COM](mailto:HOWARD.KAPLAN@AOL.COM)

Telephone# 201-833-4300 Fax # 201-833-4680



## DON'T FORGET TO BUY SCRIP

Gift cards can be purchased at the Temple:

**Office** 9:00AM - 5:00PM Monday to Thursday  
9:00AM - 2:00PM Friday

**Main Lobby** 10:30 - 11:30AM Sunday morning

**Gift Shop** 10:00AM - 1:00PM Sunday

or by contacting gift card captains:

Ted Greenwood    Don Kaplan    Sy Lazar  
201-692-8156    201-568-5189    201-498-9563

LAURA S. KIRSCH & DANIEL E. KIRSCH

ANNOUNCE THE FORMATION OF A  
LIMITED LIABILITY PARTNERSHIP  
FOR THE PRACTICE OF THE LAW

UNDER THE FIRM NAME OF

**KIRSCH & KIRSCH, LLP**

TWO UNIVERSITY PLAZA, SUITE III

HACKENSACK, NEW JERSEY 07601

T 201.342.8288    F 201.584.0418

JANUARY 1, 2006    [www.kirschandkirsch.com](http://www.kirschandkirsch.com)

(201) 836-2567  
1-800-332-LYNN



*Flowers by Lynn Ltd.*

167 CEDAR LANE • TEANECK, NEW JERSEY 07666

ARIE ARBEL



RICHARD S. GERTLER, D.M.D.  
LEONID S. ITSKOV, D.D.S.

MICHELLE BLOCH, D.D.S.  
SHEELPA SHAH, D.M.D.

**DRS. BLOCH & GERTLER**

General Dentistry

100 STATE STREET • TEANECK, • NEW JERSEY 07666

201-837-3000 Fax 201-837-0997

[www.teaneckdentist.com](http://www.teaneckdentist.com)

**Foster Village  
Kosher Delicatessen**

Dine In or Dine Out



**CATERING**  
for  
House & Office  
Parties  
Kiddush  
Bar/Bat mitzvah

**COME IN  
FOR LUNCH**  
Daily Specials  
Eat-In, Take-Out

**FULL DELI  
HOMEMADE SOUPS  
HOT DISHES  
SALADS  
APPETIZING**

469 S. Washington Ave. • Bergenfield, N.J.

Corner Washington Ave. & New Bridge Rd.

201-384-7100 • Fax: 201-384-0303

TEMPLE MEMBER!



**SETH KANE, M.D.  
ORTHOPEDIC SURGEON**

277 FOREST AVENUE  
PARAMUS, NJ  
201-261-7980

**ADULT & PEDIATRIC  
JOINT SURGERY - SPORTS MEDICINE  
FRACTURES - ARTHRITIS - SPRAINS  
BACK PAIN**



**Athens Bakery**  
Cakes • Breads • Pastries  
Birthday Cakes  
Baked Daily



201-287-0399

161 Cedar Lane  
Teaneck, NJ 07666

OWNED BY A TEMPLE MEMBER!

*Make an  
Impression*

Stacy F. Lawrence  
201-261-2777  
By Appointment  
Fax 201-261-6077  
112 Kinderkamack Rd.  
River Edge, N.J. 07661

[www.invitationsdirect.com](http://www.invitationsdirect.com)

invitations • theme decorations • centerpieces • favors •



(201) 836-5247  
FAX (201) 836-1857  
LICENSE NO. 01161-A

## DeGraw Service Center

"YOUR COMPLETE AUTO CARE CENTER"

- COLLISION REPAIR • BRAKES & TRANSMISSIONS
- PAINTING & WELDING • AIR CONDITIONING & HEATING

335 QUEEN ANNE ROAD  
TEANECK, NJ 07666

RAY BARBARINI  
OWNER



## MICHAEL D. ROBINSON, D.D.S.

### FAMILY DENTISTRY

349 UNION BLVD. • TOTOWA, N.J. 07512

973-942-3800

Your Hosts: The Matthews Family

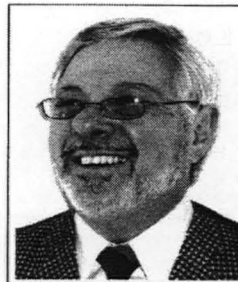
**WESTWOOD**  
Diner  
&  
Pancake House



**Matthews**  
Diner  
&  
Pancake House

301 Old Hook Road  
Westwood, NJ 07675  
Tel: (201) 664-7455  
Fax: (201) 664-3663

430 So. Washington Ave.  
Bergenfield, NJ 07621  
Tel: (201) 385-9496  
Fax: (201) 385-8140



**ELLIOT W. STEINBERG**  
Sales Associate

(201) 446-0839 DIRECT LINE  
(201) 837-8800 x14 OFFICE  
(201) 836-5959 FAX

**RUSSO REAL ESTATE**

873 Teaneck Road  
Teaneck, NJ 07666  
E-Mail [elliottsteinberg@optonline.net](mailto:elliottsteinberg@optonline.net)

## Kindred Spirits

a matchmaking service



**Marie J. Peterson**

Matchmaker & Relationship Consultant

201-801-0245

[www.kindredspiritsmatchmaking.com](http://www.kindredspiritsmatchmaking.com)



**STEVEN LEEMAN**  
REALTOR ASSOCIATE / SALES REPRESENTATIVE

**CLASSIC REALTY GROUP**

2050 Center Avenue, Suite 100

Fort Lee, NJ 07024

Office: 201-585-8080 x139

Fax: 201-585-8558

Cell: 201-970-9726

Email: [steveleems@aol.com](mailto:steveleems@aol.com)

since 1954

## Bergen County Reform Temple Memorial Association

A non-profit organization  
Serving Temple Emeth and Congregation Beth Am

Burial plots at reasonable prices

at Beth Am:  
Irwin Brownstein  
836-9444

at Temple Emeth:  
David Fox 836-0260  
Eric Loeb 692-0211

U.S. & Worldwide  
Express - Expedited - Ground  
Free Packaging Materials

**FedEx**  
Federal Express

**FedEx SHIPPING CENTER**  
(Next to Roy Brown Middle School)

150 S. Washington Ave.  
Bergenfield, N.J. 07621  
(Free Parking In Back)

Tel. (201) 385-7757  
Fax (201) 385-7740  
Mon.-Sat. 6 am-6 pm

## Guterman-Musicant Funeral Directors

402 Park Street, Hackensack, NJ 07601  
1-800-522-0588

Arthur Musicant, Mgr. N.J. Lic. No. 2544  
Alan Musicant, N.J. Lic No. 2890

Serving the Jewish community with dignity and compassion  
[www.GutermanMusicantWien.com](http://www.GutermanMusicantWien.com)

## Wien & Wien Inc. Memorial Chapels

129 Engle Street, Englewood, NJ 07631  
201-569-2404

402 Park Street, Hackensack, NJ 07601  
201-489-6125

Barry Wien, Mgr. N.J. Lic. No. 2885

Barry Wien, Mgr. N.J. Lic. No. 2885

Robert P. Szegetl N.J. Lic. No. 3586

1-800-322-0533

152 2nd Ave. New York, NY 10003 (212)-285-9659

**Weichert**

Wendy Wineburgh Dessanti  
Sales Representative  
Weichert President's Club

office 201.569.7888  
fax 201.569.1631  
cell 201.310.2255  
[WendyDess@aol.com](mailto:WendyDess@aol.com)

13 W. Railroad Ave.  
Tenafly, NJ 07670



**Weichert**  
Realtors

# CONTRIBUTIONS

## ADULT EDUCATION FUND

**Carol & Bob Aerenson** in memory of Enid Broder  
**Emily and Elliot Steinberg** in honor of Peter  
Adler's 75<sup>th</sup> birthday

## ADULT KALLAH FUND

**Seymour & Carlene Fleishman** in honor of the  
75<sup>th</sup> birthday of Peter Adler

## CAPITAL CAMPAIGN FUND

**Elinor & Richard Buchbinder** in memory of  
Max Kotkin, father of Stan Kotkin

**Judy & David Fox** in honor of the Bar Mitzvah of  
Ethan McGowan

**Carol Heischober** in gratitude to Rabbi Nafshi  
for the naming of her granddaughter,  
Brooke Chipchase

**Micki and Mike Grunstein**  
In memory of Enid Broder  
In memory of Max Kotkin, father of Stan Kotkin

**Terri and Fred Binder**

In honor of Peter Adler's special birthday  
In honor of the naming of Eilanna Jade,  
daughter of Cantor Ellen and Peter Tilem

## ILANA HED RELIGIOUS SCHOOL FUND

### In Memory of Ilana Hed

**Jill & Barry Kantor**  
**Sandie, Joe, Joshua & Jesse Harris**

## INSCRIBED LIBRARY BOOK

**Joan & Mort Rubenstein** in memory of their  
beloved son, Mark Windell

## LIBRARY FUND

**Shirley and Ken Heller** in memory of Enid Broder

## MAZON FUND

**Joan & Mort Rubenstein** in memory of William  
Abrams

## MUSEUM FUND

**June Handler** in memory of Irving Handler

## DORIS AND NED Siner MUSIC FUND

**Nan and Abe Badian**, in memory of Enid Broder

**Carol & Howard Kaplan** in memory of Isaac  
Macklin Kaplan

**Eleanor White** in memory of my mother,  
Pauline Schaffer Solomon

**Bunny and Nat Ritzer** in memory of Enid Broder

## PAUL S. LAZAR CARING COMMUNITY FUND

**Lenore Krigsman**

**Jill & Barry Kantor**

**Milly and Murray Beer**

**Elinor and Richard Buchbinder** in honor of  
Peter Adler's milestone birthday

**Bunny and Nat Ritzer** sending get well wishes to  
Howard Guttman

## RITUAL FUND

**Shirley & Gil Rosenzweig**

in memory of Marguerite Rosenzweig  
in memory of Thelma Weiss

## SOCIAL ACTION FUND

**Anne Miller & Stuart Breslow** in honor of Eva  
Sandrof's leadership of Social Action

**Joan & David Paul** in memory of Enid Broder

**Eva Sandrof** in memory of my husband, Irving

**Bunny and Nat Ritzer** in memory of Max Kotkin,  
father of Stanley Kotkin

## TEMPLE EMETH FUND

**Jill & Barry Kantor**

**Sue and Phil Keusch** in memory of Enid Broder  
**Doris Weinberg Levy** in memory of my husband,  
Fred Weinberg

**Anne, Roger and Donald Rosenthal** in memory of  
Enid Broder

## JOSHUA TRACHTENBERG MEMORIAL

### LECTURE FUND

**Carla & Larry Silver** in memory of Enid Broder

## Yahrzeit Fund

### Remembered by:

**Gerald Spiro**

**Beverly Lazar**

**Robert Spiewak**

**Carol Heischober**

### In Memory of:

Mildred M. Spiro

Albert Brownstein

Anne R. Spiewak

Robert Heischober

Max Heischober

Anne Harris Kirschenbaum

Leila Pat Bomze

Shirley Kantor

Harry Kantor

Alice Sugarman

Alice Price

Betty Marcus

Murray Marcus

Isidore Frimmet

**Jill & Barry Kantor**

**Rachael and Jeal Sugarman**

**Rosalind Dubin**

**Sandra Frimmet**





Temple Emeth  
1666 Windsor Road  
Teaneck, New Jersey 07666



UNITED STATES POSTAGE  
PITNEY BOWES  
02 1P \$0  
0002380183 FEB  
MAILED FROM ZIP CODE



Wine tasting and food pairing event organized by Ken Rutz with guest speaker Pat Romero

*Emeth*

The Bulletin of Temple Emeth of Teaneck, New Jersey  
An Affiliate of the Union for Reform Judaism  
Serving Reform Congregations in North America

Klau Library-Hebrew Union College  
Jewish Institute of Religion  
3101 Clifton Ave.  
Cincinnati, Ohio 45220