

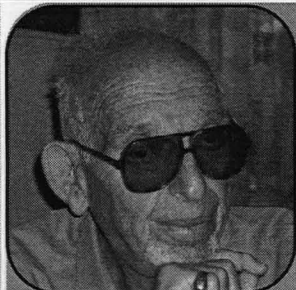
# Temple Emeth

# Bulletin

Temple Emeth of Teaneck, New Jersey  
An Affiliate of the Union for Reform Judaism  
Serving Reform Congregations in North America

Volume 60, Number 2

Cheshvan/Kislev 5767 November 2006



## Passing the Baton

Life is like a relay race we go along and set the pace  
We do our part, we do our best but someone else must do the rest  
The toughest part is how to know  
When should we stay? When should we go?  
When we go, as go we must, let's do it with elation  
And give our hearts, our love, our trust to the coming generation  
The joy we've had in sprinting on can truly be replaced  
Let's take our joy in watching how the race is raced  
Our religion makes it easy... with the Covenant we're blest  
With mezzuzah's carrying some words while we create the rest  
As we pass the Covenant and watch our children grow  
We hand them life's baton as well and cheer them as they go.

The congregation mourns the passing of longtime member and editor of the Temple Emeth Bulletin for over twenty years, Bob Spiewak, who died on September 27, 2006. He was famous for his column, "Trouble With Grandfathers"... here are two of his favorites.

## Shalom Is

Shalom is paddling a canoe beneath a sunlit sky  
Gliding along a shimmering lake as the puffy clouds flit by  
Shalom is watching a sun rise over a purple hill  
And seeing a rainbow of flowers and hearing a cardinal's trill  
Shalom is helping your children grow with pride in how they've grown  
And knowing when to let them go and build lives of their own  
Shalom is knowing what's important and focusing your thoughts  
On life's smiles and dimples, not on frowns and warts  
Having respect for others and expecting the same for you  
Avoiding blame or giving shame or getting in a stew  
Focus on where you'd like to be instead of where you've been  
And find a way to get there, now's the time to begin  
Shalom is handling your problems and seeing the bad times thru  
Fighting the battles as they come, not getting the best of you  
Shalom is taking pride in yourself and liking who you are  
Knowing your skills and accepting your faults, we can't all be a star  
Shalom is enjoying every day, making each moment last  
Living in the present while savoring the past



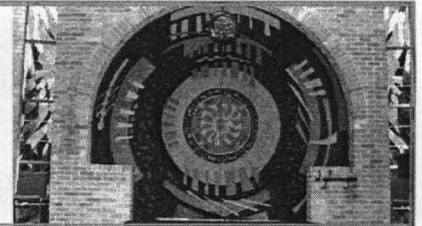
Photos courtesy of Scott Spiewak, Karen Rappaport and Carla Silver

I  
N  
M  
E  
M  
O  
R  
I  
A  
M

B  
O  
B  
S  
P  
I  
E  
W  
A  
K

# TEMPLE EMETH

1666 Windsor Road  
Teaneck, New Jersey 07666  
Main Office # 833-1322      School Office # 833-8466



RABBI . . . . . Steven Sirbu  
RABBI EMERITUS . . . . . Louis J. Sigel z"l  
CANTOR . . . . . Ellen S. Tilem  
RELIGIOUS SCHOOL EDUCATOR . . . . . Dora Geld Friedman  
EARLY CHILDHOOD DIRECTOR . . . . . Sharon Floch

◆◆◆◆◆  
TEMPLE ADMINISTRATOR. . . . . Marion Schechter  
BOOKKEEPER . . . . . Mary Espiritu  
ADMINISTRATIVE ASSISTANT. . . . . Sandra Rumayor  
SCHOOL ADMINISTRATOR. . . . . Barbara Sabella

◆◆◆◆◆  
PRESIDENT. . . . . Dan Firshein      287-9067  
FIRST VICE-PRESIDENT. . . . . William Graizel      833-8403  
SECOND VICE-PRESIDENT. . . . . Madelyn Wolf      585-0393  
THIRD VICE-PRESIDENT. . . . . Rhona Herman      836-1946  
SECRETARY. . . . . Marc Chelemer      569-4877  
ASSISTANT SECRETARY. . . . . Wendy Kosakoff      880-6324  
FINANCIAL SECRETARY. . . . . Michael Robinson      692-0779  
ASSISTANT FINANCIAL SECRETARY. . . . . Paula Dillon      692-0609  
TREASURER. . . . . Steve Packles      692-9881  
ASSISTANT TREASURER . . . . . Jeffrey Etzin      722-0405

◆◆◆◆◆  
EDITOR. . . . . Sandi Klein      837-3850  
GRAPHIC DESIGN. . . . . Barbara Balkin      261-6218  
ADVERTISING . . . . . Audrey Seares      315-2662

<i>Bulletin Deadlines</i>			<i>Mid-Month Mailing Deadlines</i>	
<u>Month</u>	<u>Deadline Date</u>	<u>Publication Date</u>	<u>Deadline Date</u>	<u>Publication Date</u>
October	September 14	October 1	October 3	October 15
November	October 12	November 1	November 1	November 15
December	November 9	December 1	December 1	December 15
January	December 14	January 2	January 2	January 16
February	January 11	February 1	February 1	February 14
March	February 8	March 1	March 1	March 15

From the Editors - in order to make sure everyone's article/blurb/ important announcement, makes it into the Bulletin, we have to insist they are no longer than half a page. *Remember, flyers are for the mid-month mailing and should be sent to Sandra Rumayor at [srumayor@emeth.org](mailto:srumayor@emeth.org)*

Material for the Bulletin is welcome and essential for the success of the publication; however, it is necessary to honor the deadlines as listed.

For the Bulletin mailings, all material **must** be submitted by **8:00 p.m.** on the date of the deadline.

Please submit all material by e-mail to [sandifk@aol.com](mailto:sandifk@aol.com) and Barbara Balkin - [dkrm505@yahoo.com](mailto:dkrm505@yahoo.com)

We cannot guarantee publication of items submitted on paper.

For Mid-month mailings, all materials (either camera ready art or information to be included in the body of the Mid-month sheet) are due by **12:00 noon** on the date of the deadline.

The Temple Emeth Bulletin is published monthly from September through June

Advertising Rates for Ad Size 2" x 3 1/2"

	Member	Non-Member
1 Month	\$ 55	\$ 82.50
5 Months	\$247.50	\$385
10 Months	\$330	\$495

For additional information, call (201) 833-1322



# Message From the Rabbi

The great poet Judah HaLevy pined for the land of Israel when he wrote, "My heart is in the east, but I am in the farthest-most west." As Jews, our hearts are in the east, but we are blessed because we can do more than write about Israel. We can get on a plane and go there.

In fact our congregation is going to Israel from February 15-25, and there is still room for you to join us. As the deadline to register for our Intergenerational Tour of Israel draws near, I want to share some thoughts that I hope will inspire you to say, "I'm in!"

This summer's war between Israel and Hezbollah was tragic and frightening. I'm sure that some people who are interested in the trip have since hesitated because of security concerns. I hope I can ease some of those concerns and show you that Israel is safe.

First of all, our itinerary for this trip has always been routed through the south of Israel. Traveling to Israel in the winter time gives us the unique opportunity to explore the desert, to dip our toes in both the Dead Sea and the Red Sea while avoiding the 100-plus temperatures that frequently occur in the summer. Thus the northernmost point on our travels will still be about an hour's drive away from where the southernmost missile hit this summer. In fact, many of the places we will visit were the very places to which Israelis from the north fled to seek refuge.

Next, you should know about the professionalism of our guide and tour operator. Our guide, Muki, was so popular with the last Temple Emeth group that we requested him a year in advance for this trip. Working in concert with his office and the Israeli authorities, he will have the authority to alter our itinerary at any time in order to keep us safe.

And I am proud to say we will be flying El Al Airlines. As you know, El Al has always been at the

forefront of aviation security. By scrutinizing both passengers and luggage, El Al has maintained a sterling reputation for air safety.

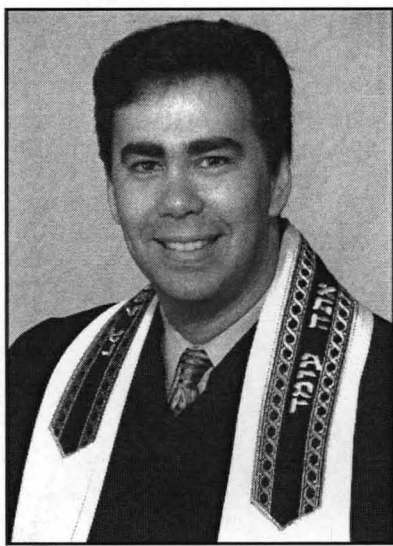
But deciding whether to join our trip is about more than security. I hope you will sign up because of the solidarity it will show with Israelis who, even if they don't live in the North, were shaken by the summer's violence. Our fate and theirs are linked, and nothing represents this better than traveling to Israel. Sure, they appreciate the fact that we are contributing to their tourism economy, but even more, they appreciate the chance to tell us their stories and to hear from us that we believe all Jews are responsible for one another.

And, of course, every journey to Israel involves the emotional experience of seeing the land of God's promise to our ancestors. It is about learning the history it preserves and the diversity of religious practices that it

nourishes. This is why we will spend time in both ancient Jerusalem and modern Tel Aviv, and why we will worship in Reform synagogues and enjoy a meal in a Bedouin tent.

While this kind of trip is life-changing for any Jew, it means that much more to share it with the members of your religious community and your rabbi. That is why I hope you will travel with me and your fellow Temple members in February. (And please don't tell yourself that if you miss this one, you'll catch the next trip real soon. Our next Temple trip will not be until Summer 2009 at the earliest.)

You can see our detailed itinerary at [www.arzaworld.com](http://www.arzaworld.com), or speak with one of our travel agents by calling 888-811-2812. As always, I am available to answer your questions if you call me at 201-833-1322. The deadline to sign up for our trip is November 27. If not now, when?



Rabbi Steven Sirbu

# From the Cantor

## Credit...Where Credit's Due

A few weeks ago I was privileged to visit many members of our Temple Emeth family who were hospitalized or homebound during the High Holy Days. On the second day of Rosh Hashana those who would not have had the opportunity to hear the call of the shofar were given that chance. I don't know how to blow the shofar, but my husband who is the ba'al tekiya (shofar blower) in our family, and our children came along. We were given a gift that day. We were blessed with the opportunity to perform a mitzvah.

What an amazing feeling to be able to share a gift, given by God, with those who truly need it. Each of us is given gifts we can share with others. However, inherent in giving and sharing, is a choice. We can take credit for ourselves, or give credit where it's due, namely to God, who gave us these gifts.

How simple it would be for any of us to take all the credit for our accomplishments, especially if we know we are performing mitzvot. The greater challenge is to see God's hand in what we are doing for others. Every human being has a choice - whether to see the obvious reality on the surface, or look

deeper and notice the hand of God hidden behind the visible.

Even in our daily work, we can easily think we are simply talented in a particular area, good at whatever our chosen profession might be. The challenge is to remember that our special set of gifts is given to us by God. If we each take the time to look back at the way our lives have played out, we will recognize moments during which there was a crossroads and we made a choice, even when we may not have made it through, but yet, lived another day.

Using the example of the shofar, we can see that knowing how to blow the shofar may or may not seem like such a great gift. But for my husband, the gift was that

God allowed him to live through a serious illness and to blow shofar even with some difficulty breathing...and the greatest gift...to be able to blow shofar for so many in their times of need.

Acknowledging God's involvement in the outcome of each situation is a choice open to us at all times. We can be thankful for these gifts in our lives every day and remember to give credit where credit is due.



Cantor Ellen Tilem

## **JOIN TEMPLE EMETH'S JR. CHOIR ETZ CHAYIM**

All first through seventh graders are welcome!!

Rehearsals are **WEDNESDAY EVENINGS from 6:15 to 7:00 p.m.**

Contact Beth Pascarello at [BMPIM60@aol.com](mailto:BMPIM60@aol.com) or  
Nancy Sharp at [NANCY.SHARP@verizon.net](mailto:NANCY.SHARP@verizon.net)





## Message From the President

It is a beautiful day and I almost ruined it. The sun was shining brightly, the air smelled fresh and there was not a cloud in the blue sky. I decided to take a walk. As I walked through the streets of Teaneck, I felt a little pebble in my shoe and it began to bother me so much that I could hardly concentrate on the beauty of the day. I was turning this wonderful moment into an annoyance.

Sometimes, that's how it is in Temple life- We have so many good things going for us as a community and yet we focus on the annoyance of an incident that may have happened rather than all the good things – our caring, the good we do, the interpersonal relationships we have and what we share with each other at the Temple. I hope you have time to reflect on all the good.

After my early morning walk, I sat in synagogue at The Guttman family *Auf Ruf* on Simchat Torah. I reflected on how I had met Jackie and Howard 10+ years ago on a day just like this at a Temple visit to the Weiss Ecology Center and we discussed our feelings about God and Synagogue. Now years later, on this Shabbat I reflected on the *eilu d'varim* prayer that we recite and its importance:

These are the obligations without measure

whose reward is without measure

To honor father and mother,

To perform acts of love and kindness,

To attend the house of study daily,

To welcome the stranger,

To visit the sick,

To rejoice with bride and groom,

To console the bereaved,

To pray with sincerity,

To make peace where there is strife

And the study of torah is equal to them all, because it

leads to them all.

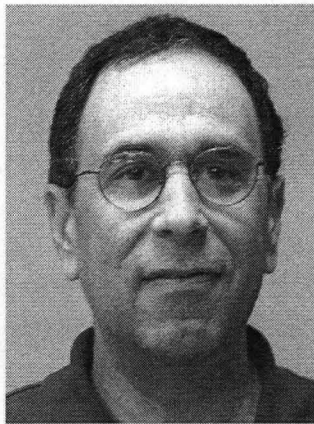
I hope that I, like you, can live up to these obligations to the best of our ability.

We as a Temple are far from perfect. But we are a special place. Jim Collins in a book called "Good to Great" conducted a management study of how great organizations triumph over time and how long-term sustained performance can be programmed into the "DNA" of an enterprise. His research identified what

distinguishing universal characteristics cause an organization to go from good to great. Our synagogue is one such organizational community that has the two key determinants of greatness. First, we have the right people on the "bus". Before we have even figured out where to drive the bus, we recognize the importance of ensuring that the right people - all of you - are seated for the journey. Second, to find a path to greatness we have confronted the

facts of our current fiscal reality. With our 3-year strategic planning process, we have engaged in an honest and diligent effort to find the truth of our situation and because of that, the right decisions have and continue to be self-evident. By confronting our current reality, we have taken the steps, according to Collins, to ensure the transformational change that will not only sustain us, but also move us from good to great. I look not simply to motivate you to contribute to the process, (of course I hope you will) but I urge you to forget that annoying little pebble. Think of the good things here at Temple, engage in dialogue, live by the obligations of the Torah, challenge each situation head-on and build a culture where we all can be heard and work together for the good of the Temple Emeth community.

B'shalom,  
Dan Firshein  
President



# From the Religious School

## Blue Prints for Ark Building

When the earth became corrupt before G-d, G-d instructs Noah to build the ark as a sanctuary to save his family and humanity. Among the details of how to build the ark, Noah is instructed, "*V'tzohar taase lateva*," – "Make an opening for light in the ark."

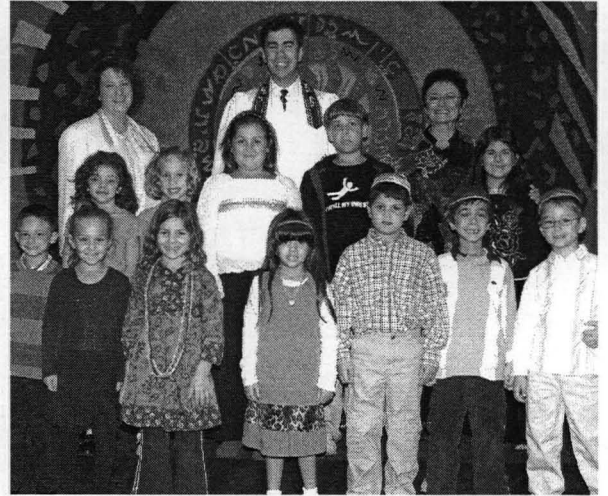
What meaning can this building detail have for us as individuals and as families? What lesson can we learn from G-d's "building instructions" to Noah? In Temple Emeth Religious School, our students in grades K-7 are given the "blueprints" of building their own "ark". In the study of Torah, each grade, from K-7, learns Jewish values and ethics, law and history. All of our students encounter Torah through "story", midrash, challenging questions and even some provocative answers. Through family education, prayer, song and dance, each student has an opportunity to participate and contribute to a "conversation" that is ancient and yet fully alive.

The "tzohar" opening for light that Noah built into the ark is a reminder to us that a secure and safe "ark" must have a source of light. This light illuminates and makes holy our life in the ark. The Torah is our light – an eternal source of truth. It is the basis for all

we are – it is our spiritual guide. All of us share the responsibility to make the world a better and holier place. At Temple Emeth Religious School, we help our students to hear the call of "*Kedoshim Tihiyu*" – you shall be a holy community. So let's build our ark with joy. We have all the tools we need.



B'vracha,  
Dora Geld Friedman



Consecration students at Sukkot

---

## From the Early Childhood Center

As is our tradition in the Early Childhood Center, the children are getting ready to experience the Torah portion of Noah through a variety of activities. This child friendly portion is an opportune time to integrate a Judaic theme with secular concepts. In preparation for the last Shabbat in October, the children explore science, math, literary and art concepts surrounding the themes of water, animals, colors, shapes and pairs. Water tables are filled with items to test sinking, floating and dissolving; collages are made with pairs of items; different geometric shapes are used to form the bodies of different animals; pairs of objects and shapes are used for patterning; the children hunt for paired patterns in their clothes and picture books; puppet pairs are used to reenact the story; movement lessons use only body parts that come in pairs, and each class learns at least two songs about Noah.

In a community effort, each class also focuses on one aspect of the story and contributes an artistic

rendition on that theme. The result is a beautiful mural which you will see hanging in the hall at the top of the ramp. It is no small task to create flood waters out of watercolors and scraps of blue, or to think of the pairs of animals that were on the ark and recreate them. And, as always, our mural contains the radiant rainbow – the symbol of God's promise to never again destroy the world.

Central to the Noah story, and our focus on it, is the dove, the universal symbol of peace. It is, indeed, a symbol which can be made meaningful to even our youngest children. At the ECC, depending on age, we think and talk about what it means to be peaceful – in our world, in our community, in our school and within ourselves. It is a concept well worth reflecting on, and dedicating ourselves to defining and sharing the peace within us all.



Sharon Floch  
Director,  
Early Childhood Center



## Membership Committee Chanukah Dinner

Please join us!

**You're invited to**

### **Temple Emeth's 7<sup>th</sup> Annual Chanukah Dinner\***

**Friday, December 15, 2006**

**6:15 p.m. Dinner**

Music Shabbat Service at 8:00 p.m.

*Bring your menorahs, candles and friends!*

Children ages 4 and under are free

All new 2006 Temple members are invited as our guests

**Adult Members: \$15.00 per person**

**Children ages 5-12 \$7.00 per person**

This event is sponsored by the Membership Committee.

For more information, contact Shana Janoff (201) 541-0151

or Jill Kantor (201) 461-5976

\*In the spirit of the holiday, please bring a can of food or non-perishable food item to donate to the Center for Food Action.

### **Temple Emeth Gift Shop**

#### **GET READY FOR HANUKKAH**

Come see...many new Hanukkah items in stock. Menorahs, Candles, Toys, Gifts and so much more! (all at great prices!)

Remember, we also carry mezzuzahs, wine glasses, Shabbat candlesticks, gift items and cards for Bar/Bat Mitzvahs, weddings, sympathy and new baby.

Also – energy efficient bulbs for sale \$2.00 each  
Car magnets and bracelets for Darfur for sale.

Supermarket gift cards are available for purchase in \$100 increments by check, cash or by using a credit card (with a \$200 minimum).

#### **Gift shop hours:**

Tuesday 4:00 p.m. to 6:00 p.m.

Sunday 9:00 a.m. to 1:00 p.m.

and always available through the Temple office.

Questions? Call Pam at (201) 722-0405

Please return the form and payment to the Temple office  
no later than December 5, 2006

### **Temple Emeth Chanukah Dinner December 15, 2006**

Name \_\_\_\_\_

Telephone \_\_\_\_\_

\_\_\_ Yes, I know you need help and I'd like to volunteer to:

\_\_\_ set up      \_\_\_ serve      \_\_\_ clean up

\_\_\_ Adult members @ \$15 per person

\_\_\_ Adult non-members @ \$18 per person

\_\_\_ Children ages 5-12 @ \$7 per person

\_\_\_ Children ages 4 and under (free)

\_\_\_ New Temple members (free):

\_\_\_ Adults      \_\_\_ Children

Total amount enclosed \$ \_\_\_\_\_



**Laura Kirsch, Chair**  
**Lucy Brody, PR**

One of Temple Emeth's premier annual fundraisers is just around the corner.....and we need your brains, brawn and bargains to make this another successful event.

#### BARGAINS:

We still need new merchandise and gently used clothing, costume jewelry, housewares, gifts and the like. Have tickets for a play, music or sporting event? They'd be perfect for the silent auction. Ask your local merchant for discount coupons - it's great p.r. for them and we sure could use their services or merchandise. Uncomfortable about asking? Contact chairperson Laura Kirsch at 201-343-5955 or [lkirsch@kirschandkirsch.com](mailto:lkirsch@kirschandkirsch.com).

#### BRAWN:

For many, this is a one-day commitment - volunteering at the Food Court (tasting allowed), chairing or helping to run a booth.

We need volunteers to show up for an hour or so on a Sunday morning to help sort the mountain of donations. We also need 'schleppers' who have access to vans/suvs or station wagons to pick up stuff.



Bazaar Committee: Pauline Hecht, Sheryl Cooper, Marion Wolf, Lynn Chaiken, Laura Kirsch and Carla Silver

Contact Sheryl Cooper at 201-487-8885 or [joelandsheryl@gmail.com](mailto:joelandsheryl@gmail.com), or Lynn Chaiken at 201-692-0038 or [lynn\\_chaiken@yahoo.com](mailto:lynn_chaiken@yahoo.com).

#### BRAINS AND MORE BRAWN:

We also need brains and brawn to help set up and price items. That will happen the week before December 10th. Date to be announced...and as an added incentive, refreshments will be served!

We need you to volunteer December 10th, the day of the big event. If you haven't signed up, please do so by contacting Marion Wolf at 201-385-8945 or [marionewolf@yahoo.com](mailto:marionewolf@yahoo.com). You can also complete and return the form found in the mid-month mailing.

If everyone pitches in, we can once again have a financially successful Bazaar - money that goes for the Temple's operating expenses.

We thank you for any help you can provide.

## ROSH CHODESH

*Temple Emeth Women! Save this Date:*

**WEDNESDAY, DECEMBER 6<sup>th</sup>**

Rabbi Nafshi will return for her second Rosh Chodesh discussion with us.

Watch for more information in the next mid-month mailing!

TEMPLE MEMBER!



**SETH KANE, M.D.**  
**ORTHOPEDIC SURGEON**  
 277 FOREST AVENUE  
 PARAMUS, NJ  
 201-261-7980

**ADULT & PEDIATRIC**  
**JOINT SURGERY - SPORTS MEDICINE**  
**FRACTURES - ARTHRITIS - SPRAINS**  
**BACK PAIN**



**Athens Bakery**  
 Cakes • Breads • Pastries  
 Birthday Cakes  
 Baked Daily



201-287-0399

161 Cedar Lane  
 Teaneck, NJ 07666



## Services and S'machot

**13 Cheshvan 5767**  
**Friday, November 3**

**Shabbat Lech Lecha**  
3rd-4th grade Dinner at 6:15 p.m.  
**Family Service at 7:30 p.m.**  
followed by Israel Oneg

**Saturday, November 4**  
*Torah Portion: Genesis 12:1-17:27*

**Shabbat Worship at 10:30 a.m.**  
*Haftarah: Isaiah 40:27-41:16*

**20 Cheshvan 5767**  
**Friday, November 10**

**Shabbat Vayera**  
**Shabbat Service at 8:00 p.m.**

The Oneg is sponsored by Karen Sacks and John Kooistra  
in honor of the Bat Mitzvah of their daughter, Hillary Kooistra

**Saturday, November 11**

**Tot Shabbat at 9:30 a.m.**  
**Shabbat Worship at 10:30 a.m.**

### **BAT MITZVAH OF HILLARY KOOISTRA**

*Torah Portion: Genesis 18:1-22:24*

*Haftarah: II Kings 4:1-37*

**27 Cheshvan 5767**  
**Friday, November 17**

**Shabbat Chayei Sarah**  
Pot Luck Dinner at 7:00 p.m.  
**Music Service at 8:00 p.m.**

The Oneg is sponsored by Deborah and Kenneth Rutz  
in honor of the Bar Mitzvah of their son, Jeffrey

**Saturday, November 18**

**Shabbat Worship at 10:30 a.m.**

### **BAR MITZVAH OF JEFFREY RUTZ**

*Torah Portion: Genesis 23:1-25:18*

*Haftarah: I Kings 1:1-31*

**4 Kislev 5767**  
**Friday, November 24**

**Shabbat Toldot**  
**Shabbat Service at 8:00 p.m.**

**Saturday, November 25**  
*Torah Portion: Genesis 25:19-28:9*

**Shabbat Service at 10:30 a.m.**  
*Haftarah: Malachi 1:1-2:7*

# November 2006

10 Cheshvan 5767 - 9 Kislev 5767

Sunday	Monday	Tuesday	Wednesday	Thursday	Friday	Saturday
			<b>1</b> 10 CHESHVAN 6:15 pm Etz Chayim meets 7:30 pm Kol Emet meets 7:45 pm ECC Back to School Night ECC Book Fair/Toy Sale	<b>2</b> 11 CHESHVAN ECC Book Fair/Toy Sale 8:15 pm Adult B'nai Mitzvah Class	<b>3</b> 12 CHESHVAN <b>11:4:30</b> 6:15 pm 3rd-4th grade Dinner 7:30 pm Family Service followed by Israel Oneg	<b>4</b> 13 CHESHVAN Lech Lecha Shabbat Ends: 5:39 9:10 am Torah Study 10:30 am Shabbat Service
<b>5</b> 14 CHESHVAN UJA - Federation Mitzvah Day 9:00 am Prayerbook Hebrew for Beginners Class 11:00 am Blood Drive 11:00 am NEW Hike 3:30 pm Temple Emeth sponsored film at 519 Cedar Lane	<b>6</b> 15 CHESHVAN 10:45 am Yiddish Class	<b>7</b> 16 CHESHVAN Mini University 7:30 pm Lit. from a Jewish Perspective 8:40 pm Prophets and Kings	<b>8</b> 17 CHESHVAN 6:15 pm Etz Chayim meets 7:30 pm Kol Emet meets 7:30 pm Website Comm. Mtg.	<b>9</b> 18 CHESHVAN NO ECC 8:00 pm Board of Trustees	<b>10</b> 19 CHESHVAN <b>11:4:22</b> NO ECC 8:00 pm Shabbat Service Kol Emet Sings	<b>11</b> 20 CHESHVAN Vayera Shabbat Ends: 5:31 9:10 am Torah Study 9:30 am Tot Shabbat 10:30 am Shabbat Service Bat Mitzvah of Hillary Kooistra
<b>12</b> 21 CHESHVAN 9:00 am Prayerbook Hebrew for Beginners Class 10:30 am B'yachad Breakfast	<b>13</b> 22 CHESHVAN 10:45 am Yiddish Class	<b>14</b> 23 CHESHVAN Mini University 7:30 pm Lit. from a Jewish Perspective 8:40 pm Prophets and Kings	<b>15</b> 24 CHESHVAN ECC Priority Registration 12:00 pm Lunch and Learn 6:15 pm Etz Chayim meets	<b>16</b> 25 CHESHVAN 8:00 pm Book Group at home of Susan Barnett 8:15 pm Adult B'nai Mitzvah Class	<b>17</b> 26 CHESHVAN <b>11:4:16</b> 7:00 pm Pot Luck Dinner 8:00 pm Music Service	<b>18</b> 27 CHESHVAN Chaye Sarah Shabbat Ends: 5:25 9:10 am Torah Study 10:30 am Shabbat Service Bar Mitzvah of Jeffrey Rutz
<b>19</b> 28 CHESHVAN 9:00 am Prayerbook Hebrew for Beginners Class	<b>20</b> 29 CHESHVAN 10:45 am Yiddish Class	<b>21</b> 30 CHESHVAN	<b>22</b> 1 KISLEV NO RELIGIOUS SCHOOL	<b>23</b> 2 KISLEV Thanksgiving Day BUILDING CLOSED	<b>24</b> 3 KISLEV <b>11:4:12</b> OFFICE CLOSED 8:00 pm Shabbat Service	<b>25</b> 4 KISLEV Toldot Shabbat Ends: 5:21 9:10 am Torah Study 10:30 am Shabbat Service
<b>26</b> 5 KISLEV NO RELIGIOUS SCHOOL	<b>27</b> 6 KISLEV 10:45 am Yiddish Class	<b>28</b> 7 KISLEV Mini University 7:30 pm Lit. from a Jewish Perspective 8:40 pm Prophets and Kings	<b>29</b> 8 KISLEV 12:00 pm Lunch and Learn 6:15 pm Etz Chayim meets	<b>30</b> 9 KISLEV 8:15 pm Adult B'nai Mitzvah Class		



## *Good & Welfare*

The congregation mourns the passing of beloved member **Bob Spiewak**, and sends condolences to his wife, Estelle

The congregation mourns the passing of beloved member **Sid Broder**.

### *Condolences to...*

**Howard Lieberman** on the passing of his father, Joseph Lieberman

### *Mazel Tov to...*

Our Administrator, **Marion** and her husband **Seymour Schechter** on the birth of granddaughter, Lilli Shayne Greenstein, daughter of Deena and Eddie Greenstein

**Dru and Ted Greenwood** on the engagement of their son, Benjamin to Emily Stuart

**Sandy and Herb Loft** on the birth of their granddaughter, Lili Sophia, daughter of Emily and Steven Wagshal

**Arlene and Dennis Hirschfelder** on the marriage of their son Adam to Jennifer Traeger

### *Get Well Wishes to...*

**Sandie Ekhaus**  
**Harold Katz**  
**Mort Rubenstein**  
**Abe Badian**  
**Angela Clark**  
**Shirley Rosenzweig**

Visit the Temple website at  
[www.emeth.org](http://www.emeth.org)



WE DO **BRITE SMILE**

**MICHAEL D. ROBINSON, D.D.S.**

**FAMILY DENTISTRY**

349 UNION BLVD. • TOTOWA, N.J. 07512

973-942-3800

On Friday, November 3, following Family Services at 7:30 p.m., the Israel Committee is going to sponsor the Oneg Shabbat with Israeli food and Israeli Dancing with Sue Cohen.

## **Israel - ARZA**

Dear Rabbi Sirbu and the Members of Temple Emeth,

Many thanks for your thoughts and prayers during and following the trying days of the war in northern Israel this summer during July and August. Those who sent emails to members of our Congregation provided sources of support and empathy for us. We found your support inspiring and were very moved by your concern for our community. We drew strength from the solidarity with our community that you expressed.

We will always be grateful to you for the generous donations that were sent to support our Congregation and we welcome all of our new Overseas Members from Temple Emeth.

Sincerely,

Rabbi Israel Horowitz on behalf of  
Congregation Emet V'Shalom Nahariya

*Weichert*

Wendy Wineburgh Dessanti  
Sales Representative  
Weichert President's Club



**Weichert**  
Realtors

office 201.569.7888  
fax 201.569.1631  
cell 201.310.2255  
WendyDess@aol.com

13 W. Railroad Ave.  
Tenafly, NJ 07670



## Temple Emeth College Kids

By Lynne Graizel

Two more Teaneck High grads have joined the College Kids since last month's Bulletin. They are: Geordan Bernard, son of Flip and Larry, attends Michigan State University. Geordie played soccer for Teaneck High.

Ryan Gerber, Peggy and David's son, is at The College of New Jersey, where btw (by the way for you non-IMers) his sister Nicole is a Senior. Ryan was a tennis player and member of the band at THS.

Also joining the College Kids are: Ben Persky, son of Barbara and David, a freshman at Rhode Island School of Design.

Twins Joel and Ben Farhi are off to college too. Joel is at Rutgers, while brother Ben is at Champlain College in Vermont where he can study and snowboard!

Sometimes members of our congregation ask if the college kids appreciate the little notes, packages and articles we send them. Well, they do. Here's one of the many thank yous we've gotten over the years from kids who love to keep connected to Emeth.

From Laura Geisenheimer —

Hi Lynne,

Thank you so much for thinking of us and sending us those cards. It's always great to get mail and holiday wishes. I hope all is well with you and the family and everyone at Temple. Shanah Tovah and have a great weekend.

## The Children's Worship Committee

thanks everyone who helped during Rosh Hashanah and Yom Kippur parallel programming this year, including our volunteer teachers:

Jodee Fink, Nancy Wolinsky, Jackie Arams, Merri Adler-Ross, Marla Levine, Beth Pascarello, Karen Kaplan, Vivian Gaits, Lillian Molnar, Amy Abrams and Ken Hoffman. We also thank our Torah readers, Leah Staffin, Josh Kohane, Hannah Miller and Arye Janoff, and our teen assistants, Alex Hoffman, Nick Hoffman, Margie Scher, Naomi Scher, Rachel Nagengast, Rachel Kaplan, Cheryl Kaplan, Samantha Kaplan, Samantha Ross, Sophie Hort, Scott Graber, Elizabeth Graber, Layla Janoff, Rebecca Dillon, Mollie Dillon. To those whose names are left out, we apologize and thank you as well. Yasher Koach.

Sandi Intraub, Student Rabbi  
Karen Sacks and Susan Schwartz  
Co-Chairs

## SOCIAL ACTION IN ACTION

### WHAT WE DO - WHAT YOU CAN DO

*THE SOCIAL ACTION COMMITTEE IS COMMITTED TO  
ENABLING TEMPLE EMETH MEMBERS TO PERFORM  
ACTS OF TIKKUN OLAM, HEALING THE WORLD.  
TOWARDS THIS GOAL, WE OFFER MANY OPPORTUNI-  
TIES TO HELP THE NEEDY IN OUR COMMUNITY  
THROUGHOUT THE YEAR:*

### SUNDAY NOVEMBER 5<sup>th</sup> - BERGEN COUNTY UJA MITZVAH DAY

Join over 1500 Mitzvah Day participants and take part in a community wide volunteer day. For more information about opportunities to volunteer, see [www.ujannj.org](http://www.ujannj.org). Temple Emeth will host a Blood Bank at the Temple and a Bone Marrow Drive at Holy Name Hospital that day. The only prerequisites for participation are energy and enthusiasm!

**DECEMBER 23-30** - We will again staff the Family Shelter in St. Cecilia's Church in Englewood during Christmas week. The shelter temporarily houses up to seven families who are temporarily homeless. To be eligible for the program, one family member must be employed. Needed each night are 2 cooks/servers and 2 hosts/sleepers. The shelter is run year-round by the Interreligious Fellowship for the Homeless and churches & temples in Bergen County.

### MITZVAH OF THE MONTH

**NOVEMBER** - Thanksgiving foods for the Family Assistance Center at the Teaneck Armory. Help families who have members serving in the armed services in Iraq and Afghanistan.

### I (We) can help....

Cook for the Family Shelter \_\_\_\_\_  
preferred date \_\_\_\_\_  
Host/sleep over at the Family Shelter \_\_\_\_\_  
preferred date \_\_\_\_\_  
NAME \_\_\_\_\_  
Telephone # \_\_\_\_\_  
E-mail \_\_\_\_\_

(place in Social Action mail box)

For more information, contact Eva Sandrof  
at 201-837-2241



Perhaps the most pressing question and even challenge to any religion—especially modern Western religion—is: How can evil exist in a world ruled by a merciful, loving God? When debating this topic, one cannot ignore the most major occurrence of absolute evil in the recent past, the Holocaust. When juxtaposed to Hitler's slaughter, almost any other sin or evil seems tame; but how could such a horror as this occur in a world of God?

Elie Wiesel's *Night* gave the Holocaust a new level of lucidity for me. No longer were the words "death camp," "crematory," and "gas chamber" merely words. Rather, they call to my mind the images the book revealed. With my improved understanding of the Holocaust and the depth of its evils, I find that the question I have put forth *must* be asked and explored. Wiesel may not formally ask this question in the book, but, at least while in the custody of the Germans, the answer "there is no God" becomes his reality. As a Jew who feels that a belief in God is fundamental to our religion, this answer is wrong by default. Therefore, I have come to three possible answers of my own: One, God turned His back on the world; Two, God was testing the Jews as he tested Abraham in *Vayera*; Three, God could not, for some reason, intercede. I find I am able to believe all of these in part, and perhaps each played a role in sustaining the Holocaust, but mostly, I believe the third explanation.

The first possibility I can see is that God turned his back on the world at the time of the Holocaust. The follow-up question, of course, is why? Could a "God of mercy" turn his back on the Jews or any massive number of human beings in such a situation? The most obvious answer is that the victims were all bad people who deserved to be tortured and cruelly murdered without a thought. That means *every one* of the six million Jews and six million others must have been pretty horrible people—in this life or a past life, if you accept reincarnation. That may suffice for some; I cannot accept it. In my view, no one—not even Hitler himself—deserved to be put through the horrors of a death camp. That *twelve million human beings* earned themselves that fate is, to me, preposterous—and that number omits the survivors, who had to live that horrible life and came out scarred by the memory of it. Besides, as *Night* shows clearly, many of Wiesel's friends and acquaintances before and during his time in the camps were religious Jews. Wiesel himself attempted to study cabala a few years before his deportation. In fact, some even attempted to pray while staring at death in the camps. Therefore, I cannot see the Holocaust as a collective punishment against its victims.

Another reason why God would simply allow this terror is because He works in "mysterious ways," and this is all part of His plan. Therefore, we humans cannot hope to understand why merciless slaughter and attempted genocide is necessary. Again, I cannot believe this, because I feel something as brutal as the Holocaust demands an explanation if done for a reason.

The last reason I can think of that would have God turn

His back on the world at this time was because he needed to use the Holocaust as an example. Was the world complacent? After the first world war—the "war to end all wars"—did it appear that nothing so wicked could ever happen? Were the Jews being forgotten or hated throughout the world? Was Fascism to be ignored unless this cruel example was made of it? Perhaps, if all of these things were true, then this Holocaust had a purpose that made it justifiable before God. This I might accept, but only very hesitantly. I am not well-versed enough in history to form an opinion on whether the slaughter of millions was needed to correct these problems—and as can be seen today, it has not done so completely. I cannot really imagine that the state of the world justified the Holocaust, but perhaps without it, the world and the Jews would have been lost. That is a tremendous "what if," though, and I feel that a better explanation, or at least an additional one, is necessary, and that whether or not God turned His back on the world, it was not the only thing that allowed the terror of the Holocaust to occur.

The second apparently reasonable conclusion is that God was testing or making an example of the Jews and the others who died. For precedent of this theory, we can cite the passage of the bible in which Abraham receives God's command to sacrifice his son. Here the text says that God is testing Abraham, in particular for his faith. Abraham did not back down until an angel informed him that the order was reversed. Perhaps God also needed to test the Jews for their faith during this time. Though no comparison appears to exist between the sacrifice of Isaac and the destruction of the Jews, Isaac was the only Jewish son of Abraham and therefore his entire posterity; with Isaac dead, the Jews would almost certainly not exist. However, the fire and the knife do not signify nearly as terrible a death as the concentration camps and the crematoriums, and in the Holocaust, the ones being tested were faced with death, rather than asked to kill as Abraham was. Perhaps because of these failures in the comparison, many men, including Wiesel, lose their faith—as well as their will to survive and their love for fellow humans, like Wiesel's father. Did they fail the test? Wiesel survived, while many of the faithful around him died. Therefore, I do not hold by this theory either.

The last, and perhaps most frightening, theory is that God is in fact *not* all-powerful—that He at least has limits to his powers on Earth. Perhaps, either simply because His powers do not extend so far or because of some deep mystical reason, God was unable to intercede in the events of the Holocaust—at least not until 1945. If it sounds unrealistic, it must be noted that God was similarly late in freeing the Jews from slavery in Egypt. Perhaps if God had interfered earlier some balance in the world would have been thrown off. In addition, perhaps God was kept from interfering by the presence of some great spiritual evil entity such as Satan, to whom Hitler is often compared. This may be the most frightening thought of all, because if true it means that Satan has

(continued on page 14)

### Confirmation Essay by Daniel Kohane (continued)

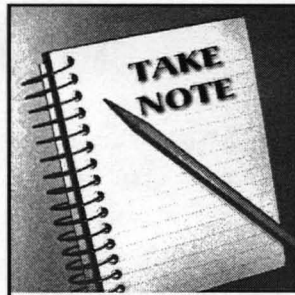
the power to halt God in almost anything. While the influence of some Satan may have existed, I don't believe that it was the preventative factor, because otherwise the Holocaust might never have ended.

I do believe, however, that the combined decision of nearly the entire world—the Nazis themselves as well as all of those who ignored the Jews and therefore condemned them—had, and has, the power to stop God. I believe that perhaps this, possibly in conjunction with other points I have mentioned, stopped God, or at least caused God to allow the suffering that was essentially willed by the world. I believe in free will, and nearly the entire world willed this death upon the Jews—for silence gives consent, and until the end of the war most of the world did not care for the destruction of the Jews. Thus, my belief is that the Holocaust was out of God's hands for so long because the world turned its back on the Jews, the gypsies, the homosexuals, and all others who were hunted down by the Nazis. In doing so it turned its back on goodness and, therefore, God. This is what stopped God from putting an end to the Holocaust; this is the reason so many evils were committed and so many people died: it is because nearly all of the world allowed them to, and therefore made them, die. The will of a great majority of the world stopped the hand of God. On the one hand, this is a terrible thought—if the world becomes unbearably corrupt throughout, will God be unable to help us? On the other hand, it is somewhat beautiful to think of humanity as partners to God on Earth, with, as a whole, an equal, or nearly equal, say in what happens.

### B'yachad

I have received some very nice comments from congregants on how beautiful the Sukkah looks. Thanks to the efforts of our chairperson, Martin Breznick, and his crew, Marc Chelemer, Ronald Arams, Art Lerman, Seth Kane and Michael Brummer that this was completed in spite of the horrible weather conditions on that day. I would also like to thank Joel and Diane Sturman for donating the Sukkah decorations. I'm quite fortunate to have the help and support of many people throughout the year for all of the B'yachad events. It is because of your devotion, B'yachad is a vibrant and very successful organization at Temple Emeth. Thanks to all of you for everything you do.

Elliot W. Steinberg  
B'yachad President



November

- 1 & 2 ECC Book Fair and Toy Sale
- 3 3rd and 4th grade Dinner & Israel Oneg
- 5 UJA Federation Mitzvah Day  
Network of Emeth Women Nature Hike  
11:00 a.m. at Lorrimer Sanctuary
- 12 B'yachad Breakfast 10:30 a.m.
- 16 Book group
- 17 Pot Luck Dinner 7:00 p.m.
- 22 No Religious School
- 23 Building closed
- 24 Office closed
- 26 No Religious School

### Sukkot celebrations





## CONTRIBUTION FORM

\$ \_\_\_\_\_ Enclosed (\$10 minimum) Fund Name \_\_\_\_\_

Contributed by \_\_\_\_\_

Send Acknowledgment to: \_\_\_\_\_

Address \_\_\_\_\_

Message \_\_\_\_\_

**Contributory Funds** – contributions are deposited in the Temple Emeth Funds Account and drawn for use by the designated committee

- |  |  |  |
|--|--|--|
| • Adult Education Fund                           | • Albert & Mildred Otten Institute for Living Arts | • Paul S. Lazar Caring Community Fund  |
| • Children's Worship Fund                        | • College Kids Fund                                | • Environment Fund                     |
| • Abe Golumb Religious School Scholarship Fund   | • Early Childhood Center Fund                      | • Inscribed Prayerbook Fund            |
| • Library Fund                                   | • Ilana Hed Religious School Fund                  | • Outreach Fund                        |
| • Prayerbook Fund                                | • Music Fund                                       |  |
| • Ritual Fund                                    | • Margery Rothschild Memorial Israel Fund          |  |
| • Rabbi Louis J. Sigel Scholar-in-Residence Fund | • Social Action Fund                               | • Straussman Memorial Youth Award Fund |
| • Temple Emeth Beautification Fund               | • Temple Emeth Fund                                | • Torah Repair Fund                    |
| • Joshua Trachtenberg Memorial Lecture Fund      | • Yahrzeit Fund                                    | • Youth Committee Program Fund         |
| • Youth Fund                                     |  |  |

**Endowed Funds** – contributions are added to principal held by the Temple Emeth Endowment Foundation with fund income distributed yearly

- |   |   |                                       |
|---|---|---------------------------------------|
| • Adult Kallah Scholarship Fund               | • Honigberg/ Howard Religious School Scholarship Fund | • Lazar Educational Enrichment Fund   |
| • Paul S. Lazar Caring Community Endowed Fund | • Alfred and Helen Levin Youth Award Fund             | • Rabbi Louis J. Sigel Endowment Fund |
| • Ned and Doris Siner Music Fund              | • Temple Emeth Endowment Fund                         | • Youth Scholarship Fund              |

**Tzedakah Funds** – contributions are distributed to various beneficiary agencies by the Social Action Committee

- |                          |                  |                              |         |
|--------------------------|------------------|------------------------------|---------|
| • Center for Food Action | • General Grants | • Inter-Religious Fellowship | • Mazon |
|--------------------------|------------------|------------------------------|---------|

**Other Funds** – contributions are used at the discretion of the recipient.

- |                              |                               |
|------------------------------|-------------------------------|
| • Rabbi's Discretionary Fund | • Cantor's Discretionary Fund |
|------------------------------|-------------------------------|

### HOWARD M. KAPLAN ATTORNEY-AT-LAW

43 YEARS EXPERIENCE

MEMBER, NATIONAL ACADEMY  
OF ELDER LAW ATTORNEYS

**PERSONAL INJURY  
MUNICIPAL COURT  
BANKRUPTCY  
REAL ESTATE LAW  
WILLS & ESTATES  
GENERAL LITIGATION**

1086 Teaneck Road  
P.O. Box 78  
Teaneck, NJ

E-MAIL: [HOWARD.KAPL@AOL.COM](mailto:HOWARD.KAPL@AOL.COM)

Telephone# 201-833-4300 Fax # 201-833-4680



**STEVEN LEEMAN**  
REALTOR ASSOCIATE / SALES REPRESENTATIVE

#### CLASSIC REALTY GROUP

2050 Center Avenue, Suite 100  
Fort Lee, NJ 07024

Office: 201-585-8080 x139

Fax: 201-585-8558

Cell: 201-970-9726

Email: [steveleems@aol.com](mailto:steveleems@aol.com)



### Foster Village Kosher Delicatessen

Dine in or Dine Out



**CATERING**  
for  
House & Office  
Parties  
Kiddush  
Bar/Bat mitzvah

**COME IN  
FOR LUNCH**  
Daily Specials  
Eat-In, Take-Out

**FULL DELI  
HOMEMADE SOUPS  
HOT DISHES  
SALADS  
APPETIZING**

469 S. Washington Ave. • Bergenfield, N.J.  
Corner Washington Ave. & New Bridge Rd.

**201-384-7100 • Fax: 201-384-0303**

*Please support our advertisers and tell them  
you saw their ad in the Temple Emeth Bulletin*

## CONTRIBUTIONS

### ADULT EDUCATION FUND

**Joan & David Paul** in memory of Richard Harris  
**Elinor & Richard Buchbinder** sending get well wishes to Estelle Spiewak

### ADULT KALLAH FUND

**Bev & Sy Lazar** in memory of Bob Spiewak  
sending get well wishes to Jacqueline Guttman

### CANTOR'S DISCRETIONARY FUND

**Julian Hyman** in gratitude

### CAPITAL CAMPAIGN FUND

**Linda & Ronald Klempner** (sanctuary ceiling repair)  
**Teri & Fred Binder** in memory of Benjamin Weinberger  
in memory of Bob Spiewak  
in honor of the marriage of Vicky Paul to James Van Zetta  
in honor of Andrew Lee Steinberg, new grandson of Emily & Elliot Steinberg  
in honor of Rachel Gabriella, new granddaughter of Janice & Larry Lipsitz  
**Pam & Jeff Etzin** sending get well wishes to Seymour Schechter  
**Judy & David Fox** in memory of Rolf Mandeau

### COLLEGE KIDS FUND

**Elinor & Richard Buchbinder** sending get well wishes to Sandie Ekhaus

### EARLY CHILDHOOD FUND

**Joan & Mort Rubenstein** in honor of June Handler receiving the Thea Bry award for her achievements in Early Childhood Education  
**Judy & David Fox** in honor of the marriage of Sharon Floch to Bob Feinberg

### ILANA HED RELIGIOUS SCHOOL FUND

**Marc Klausner** in honor of the Bat Mitzvah of Emma Himmelhoch

### INSCRIBED LIBRARY BOOK FUND

**Shirley & Kenneth Heller** in memory of Rolf Mandeau

### MUSIC FUND

**Carla & Larry Silver** in honor of Marc Guttman & Michelle Weinstock's Aufruf  
**Bev & Sy Lazar** in memory of Sid Broder  
**Eliot Gordon** in memory of Bob Spiewak  
**Joan & David Paul** in memory of Seymour Fleishman  
**Elinor & Richard Buchbinder** in honor of the conversion of Vic Anesini  
**Bev & Sy Lazar** in honor of the conversion of Vic Anesini

### PAUL S. LAZAR CARING COMMUNITY FUND

**Judy & David Fox** in gratitude  
**Evelyn & Abe Silberstein**  
**Carlene Fleishman** in appreciation  
**Deborah & Jim Veach** in appreciation  
**Sara & Conrad Berke** in appreciation  
**Flora Braunschweiger** in gratitude and in memory of her brother  
**Ruth Meissner** sending get well wishes to Deborah Saloway

### RABBI LOUIS J. SIGEL ENDOWMENT FUND

**Beulah Warshaw** in memory of Richard Harris  
in memory of Rolf Mandeau  
**Ruth & Peter Adler** in memory of Richard Harris  
**Bev & Sy Lazar** in memory of Richard Harris  
**Edith J. Fox** in memory of Richard Harris  
**Lorraine & Jerome Fisch** in memory of Richard Harris

### RABBI SIRBU'S DISCRETIONARY FUND

**Carla & Larry Silver** in honor of Rabbi Steven Sirbu, Rabbi Rebecca Sirbu & Talia  
**Jackie & Ron Arams** in gratitude  
**Daniel & Sandy Moss** in gratitude to Rabbi & Cantor & in memory of their beloved mother, Tova Ronni Moss.  
**Eva Mandeau** in gratitude to Rabbi  
**Evelyn Harris** in gratitude to Rabbi  
**The Children of Richard Harris** in gratitude to Rabbi  
**Julian Hyman** in gratitude to Rabbi



## CONTRIBUTIONS

### ROSH CHODESH FUND

**Ruth & Peter Adler** in memory of Bob Spiewak  
in memory of Rolf Mandeau

**Carlene Fleishman** in honor of the marriage  
of Victoria Paul to James Van Zetta,  
children of Joan & David Paul  
in honor of the conversion of Vic Anesini  
in honor of the new granddaughter of Pauline  
& Stan Hecht

### SOCIAL ACTION FUND

**Elinor & Richard Buchbinder** in memory of  
Joseph Leiberman, father of Howard  
Leiberman

**Marcia Shapiro & Michael Robinson** in honor of  
the marriage of Adam Hirschfelder to Jennifer  
Traeger, children of Dennis & Arlene  
Hirschfelder  
sending get well wishes to Sandie Ekhaus

### TEMPLE EMETH BEAUTIFICATION FUND

**Sue & Phil Keusch** in honor of the birth of  
Lili Sophia, new granddaughter of  
Sandy & Herb Loft  
in honor of the birth of Rachel Gabriella  
Lipsitz, new granddaughter of Janice &  
Larry Lipsitz  
in memory of Bob Spiewak

### TEMPLE EMETH FUND

**June Handler** in memory of Bob Spiewak  
in memory of Richard Harris

### TEMPLE EMETH FUND

**Bev & Sy Lazar** in honor of the birth of Lilli Shayne,  
new granddaughter of Marion & Sy Schechter  
sending get well wishes to Estelle Spiewak

**Shana Greenblatt & Gregory Janoff** in memory of  
Rolf Mandeau  
in memory of Bob Spiewak

**Ilse & Fred Halden** in memory of Bob Spiewak  
**Renita Steinberg** in memory of Irving Hauptman  
**Carla & Larry Silver** in memory of Bob Spiewak

**Fran Butensky** in memory of Bob Spiewak  
**Bev & Sy Lazar** in memory of Rolf Mandeau  
**Mike & Micki Grunstein** sending get well wishes to  
Sy Schechter

in honor of the engagement of Benjamin  
Greenwood, son of Ted and Dru  
Greenwood, to Emily Stuart.

**June & Victor Cohen** in gratitude to Michael  
Robinson  
in memory of Seymour Fleishman

**Barbara & Paul Kaufman** in memory of  
Rolf Mandeau

### YAHREZEIT FUND

**Edith Baer** in memory of Julius & Martha Baer  
**Gerald Spiro** in memory of Janet Spiro  
**Carol Heishober** in memory of Irving Harris  
**Geri Kaufman** in memory of Herbert Kaufman  
**Stuart Breslow** in memory of Alvin Breslow  
**Aaron Mittleman** in memory of Phyllis Mittleman  
**Anne Rosenthal** in memory of Ken Rosenthal

## Temple Emeth Renaissance Group

### Metropolitan Opera Backstage Tour

All Renaissance members are invited to take a once in a lifetime tour of the backstage area of the Metropolitan Opera House in New York's Lincoln Center on Sunday, November 12<sup>th</sup>. Carpools will leave from Temple Emeth at 8:45 a.m. Tickets are limited and reservations must be made immediately. The guided tour and shared transportation will cost \$25 per person. If you wish to also enjoy lunch at Josephina's Restaurant across from Lincoln Center there is an additional \$25 charge per person. For more information, or to reserve your place, please call Co-Chairs Elaine Pollack at 201-385-2085, [elaine33@optonline.net](mailto:elaine33@optonline.net), or Barbara Kaufman at 201-385-8433, [BKaufmanNJ@aol.com](mailto:BKaufmanNJ@aol.com).

## B'YACHAD BREAKFAST

Sunday, November 19, 2006

Rabbi Sirbu will speak on

### A WING AND A PRAYER

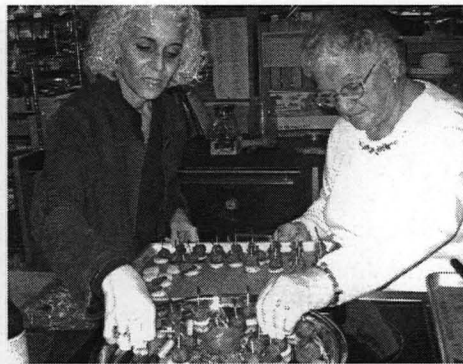
Evangelical Christian Chaplains at the US Air Force Academy in Colorado have been accused of improperly proselytizing at campus events. Jewish cadets say they are made uncomfortable while the chaplains claim their right to free speech. Congressional policy on the issue keeps shifting and the Supreme Court has yet to rule. Addressing the underlying issues, Rabbi Sirbu will tell us where the major Jewish organizations stand.

All B'yachad breakfasts begin with a short service at 10:00 am.

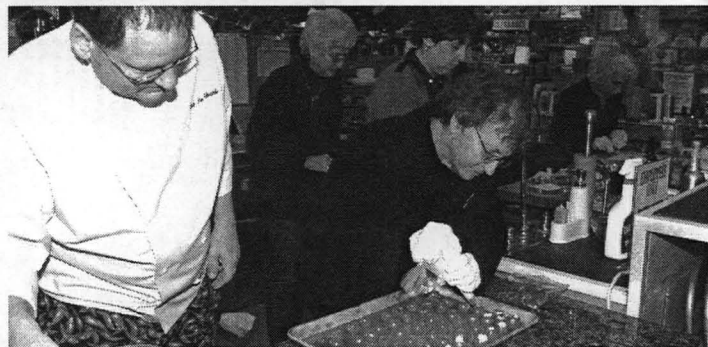
The breakfast starts at 10:30 am.

This RSVP must be filled out and returned by November 10, 2006. If you do not respond by this date, you will be welcome to attend the lecture, but will not be able to join us for the breakfast.

Name \_\_\_\_\_  
 Number Attending \_\_\_\_\_  
 Amount Enclosed \_\_\_\_\_  
 Telephone # \_\_\_\_\_  
 E-mail \_\_\_\_\_



Network of  
**Emeth Women**  
 meet at **CHEF**  
**CENTRAL**  
 and learn how to  
 prepare and plate  
 canapes and  
 hors d'oeuvres  
 under the guid-  
 ance of Chef Jim  
 Edwards



(201) 836-5247  
 FAX (201) 836-1857  
 LICENSE NO. 01161-A

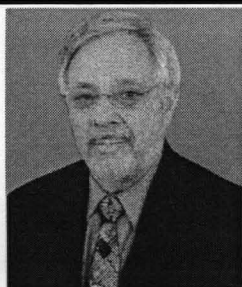
### DeGraw Service Center

"YOUR COMPLETE AUTO CARE CENTER"

- COLLISION REPAIR • BRAKES & TRANSMISSIONS
- PAINTING & WELDING • AIR CONDITIONING & HEATING

335 QUEEN ANNE ROAD  
 TEANECK, NJ 07666

RAY BARBARINI  
 OWNER



### ELLIOT STEINBERG Realtor Sales Associate

Office: 201-445-9500 x 174 / Cell: 201-446-0839  
 Office Fax: 201-670-7780 / Home Fax: 201-836-5959  
 elliotsteinberg@optonline.net



WEICHERT GOLD SERVICES  
 "We take care of everything"

Ridgewood Office  
 15 W. Ridgewood Avenue  
 Ridgewood, NJ 07450

RICHARD S. GERTLER, D.M.D.  
 LEONID S. ITSKOV, D.D.S.

MICHELLE BLOCH, D.D.S.  
 SHEELPA SHAH, D.M.D.

### DRS. BLOCH & GERTLER

General Dentistry

100 STATE STREET ♦ TEANECK, ♦ NEW JERSEY 07666

201-837-3000 Fax 201-837-0997

[www.teaneckdentist.com](http://www.teaneckdentist.com)

OWNED BY A TEMPLE MEMBER!

*Make an  
 Impression*

Stacy F. Lawrence  
 201-261-2777  
 By Appointment  
 Fax 201-261-6077  
 Rt 2 Kinderkamack Rd.  
 River Edge, N.J. 07661

[www.invitationsdirect.com](http://www.invitationsdirect.com)

invitations • theme decorations • centerpieces • favors •

since 1954

### Bergen County Reform Temple Memorial Association

A non-profit organization  
 Serving Temple Emeth and Congregation Beth Am

Burial plots at reasonable prices

at Beth Am:  
 Irwin Brownstein  
 836-9444

at Temple Emeth:  
 David Fox 836-0260  
 Eric Loeb 692-0211



# NEW'S FALL NATURE HIKE AND PICNIC

Join the Network of  
Emeth Women on  
Sunday, November 5th  
at the Lorrimer  
Nature Sanctuary in



Franklin Lakes at 11:00 a.m.

for our first (VERY EASY) hike plus  
(bring your own) picnic lunch.

Wear layers and comfortable walking shoes.

Come enjoy a walk in the woods with the

Network of Emeth Women

The event is free for members

(\$5 for non-members)

and will take place weather permitting.

If you plan to join us, please contact Sharon  
Schubert at [SharonLSchubert@aol.com](mailto:SharonLSchubert@aol.com)

*Call Sharon for last minute inquiries if the weather  
is inclement at (201) 692-1246*

If you would like to carpool from the Temple,  
let us know, otherwise, meet us at the  
Visitor's Center at 11:00 a.m.

**Directions to Lorrimer Sanctuary – 790 Ewing Avenue**  
**From Route 287 (North or South):** Take exit for Rt. 208  
South and follow directions below.

**From Rt. 208 (North or South):** Take the Ewing Avenue Exit.  
Go South on Ewing Avenue through a blinker and a traffic light  
(intersection of Franklin Lakes Road). Proceed 200 yds. to our  
driveway on the right side (approximately 1 mile from Rt. 208)

## Minutes from the Board of Trustees Meeting October 12, 2006

The Board of Trustees met on Thursday night,  
October 12th. Forty trustees plus the Rabbi were pres-  
ent. The meeting focused on finance, during which the  
Board:

Received final FY 2005-2006 budget-to-actual  
financial reports.

Approved a motion advanced by the Finance  
Committee to obtain a Temple Emeth Visa Card that  
will permit small purchases by the office staff, subject  
to strict approval guidelines by Temple officers and  
overall credit limits.

Approved the expenditure of funds to pay for  
both new window treatments in the Social Hall and  
upgrades to the security system as well as accounting  
for those non-budgeted expenditures.

Heard about the revamped program on selling  
supermarket Gift Cards (formerly referred to as  
“Scrip”) for another year with new controls as well as  
incentives. We now accept credit cards for Gift Card  
purchases. The program must significantly outperform  
FY 05-06 levels in order to be maintained.

Heard that the Temple will be offering to  
employees of the synagogue a short-term disability  
plan that will cover them if they are not able to work at  
the Temple for a period of up to six months.

The Board also:

Learned about preliminary repair work on dam-  
aged portions of the sanctuary ceiling by a specialized  
contractor late in the year.

Heard updates from the Rabbi, the President,  
and from the heads of various Committees on numer-  
ous upcoming events in the next 30 days.

Board minutes are available in the Temple office.  
Board of Trustee meetings are open to any Temple  
member; they take place the second Thursday of every  
month.

Questions? Please contact the Secretary,  
Marc Chelemer, at [marcchelemer@alum.mit.edu](mailto:marcchelemer@alum.mit.edu).  
Stay informed and get involved!

U.S. & Worldwide  
Express - Expedited - Ground  
Free Packaging Materials

**FedEx**  
Federal Express

**FedEx SHIPPING CENTER**  
(Next to Roy Brown Middle School)

150 S. Washington Ave.  
Bergenfield, N.J. 07621  
(Free Parking in Back)

Tel. (201) 385-7757  
Fax (201) 385-7740  
Mon.-Sat. 6 am-6 pm

For generations, we've  
made family, community  
and tradition our promise to you.

GUTTERMAN AND MUSICANT  
JEWISH FUNERAL DIRECTORS

Arthur R. Musicant, Mgr. N.J. Lic. No. 2544  
Alan L. Musicant, N.J. Lic. No. 2890

1-800-522-0588



WIEN & WIEN INC.  
MEMORIAL CHAPELS

Robert P. Szegeti, Mgr., N.J. Lic. No. 3586  
Ronald Bloom, N.J. Lic. No. 4545

1-800-322-0533



402 Park Street, Hackensack, NJ 07601  
Serving all of Florida  
[www.GuttermanMusicantWien.com](http://www.GuttermanMusicantWien.com)



Temple Emeth  
1666 Windsor Road  
Teaneck, New Jersey 07666



***Emeth***

The Bulletin of Temple Emeth of Teaneck, New Jer  
An Affiliate of the Union for Reform Judaism  
Serving Reform Congregations in North America

Klau Library-Hebrew Union College  
Jewish Institute of Religion  
3101 Clifton Ave.  
Cincinnati, Ohio 45220