



# The Menorah



Congregation Beth HaTephila: a Reform Congregation in the heart of the Blue Ridge Mountains, Founded 1891

March 2015

Vol. 75 No. 7 (Published monthly)

Adar — Nisan 5775

Congregation Beth HaTephila  
43 North Liberty Street  
Asheville, North Carolina 28801-1822  
(828) 253-4911  
FAX: (828) 253-1553  
e-mail: [admin@bethhatephila.org](mailto:admin@bethhatephila.org)  
Web site: [bethhatephila.org](http://bethhatephila.org)

**Rabbi Batsheva Meiri**  
([rabbi@bethhatephila.org](mailto:rabbi@bethhatephila.org))

Lauren Rosenfeld, Religious School Director  
([CBHTDirector@gmail.com](mailto:CBHTDirector@gmail.com))

JoAnne Rosenblum, President  
([president@bethhatephila.org](mailto:president@bethhatephila.org))

Robert J. Ratner, Ph.D., Rabbi Emeritus  
([emeritus@bethhatephila.org](mailto:emeritus@bethhatephila.org))

## SERVICES

Fridays – 7:30 PM  
Family Service @ 6:30 – First Friday

## **What's Inside**

Board & Committee Members	2
President's Message	3
Learning Corner	4
Tikkun Olam Committee	5
Sisterhood News	6
Brotherhood News	6
Our Temple Family	7
Temple Happenings	8
Celebrations	10
Gifts and Memorials	11
Community Happenings	11
Yahrzeits	12
Jewish Family Services	13
Brotherhood Brunch	14
Sisterhood Dinner Dance	15
Passover Dinner Reservation Form	16
Sisterhood Spring Luncheon	17
Reteat Flyer	18
Advertisers	19
Calendar	20

## TEMPLE OFFICE HOURS

Mon.— Thurs.: 9:00 AM – Noon &  
1:00 PM – 4:00 PM

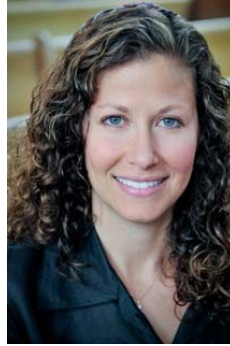
Friday: 9:00 AM – 1:00 PM

Drop in hours: 10-11 AM Mon. – Fri. and  
4-5 PM Mon. - Thurs.

Temple Administrator: *Julie Sherman*

## Rabbi Meiri

To make an appointment with Rabbi Meiri, please call the Temple office (253-4911, ext.10).



## **Between You and Me**

Extreme polarization around issues facing Israel is one of the most difficult challenges our Jewish communities in North America face. On the one hand, there is a great desire among Jews to feel a sense of peoplehood or family resemblance, a set of principles, values and identifiers which connect us to one another. Until a number of years ago, one could say that participating in the revitalization of the Jewish people in the State of Israel was one of those core values. Despite deep differences in theology, culture and ritual

practice, most of the Jewish world cried together when Israel hurt and rejoiced together when Israel prevailed.

On the other hand, the narrative of Israel around which North American Jews rallied had been a somewhat idealized one: one which promised that Jewish sovereignty would look different from the nations of the world. We were captivated by the notion that we might fulfill the Herzlian dream of Israel as a model nation-state to the world, emanating light, peace and unity of all peoples. Planting a tree in Israel was like planting a little bit of our souls in its soil. And there was no sweeter, purer place to breathe the air of being Jewish.

If this was the content of why Israel became a powerful “religious” notion in the 20<sup>th</sup> century, an emerging feature of 21<sup>st</sup> century Jewry is a growing fragmentation of the narrative. For some North American Jews, there is growing discomfort with the direction Israel is heading as it confronts its geopolitical and internal realities. For them, today’s Israel isn’t fulfilling her mission of being a state that reflects their most precious values, responding to its challenges instead in ways that mystify their Jewish consciences.

Others remain stalwart in seeing Israel’s growth and development as a nation over the decades as nothing short of a political, religious, technological and economic miracle despite overwhelming challenges to its survival. Not only that, in a world with anti-Semitism on the rise, supporting Israel as a safe haven for the world’s Jews feels essential. For their friends or family members to speak of Israel’s failings mystifies their Jewish conscience. They might expect those views from people outside of the Jewish community or from anti-Semites, but it is nothing short of betrayal coming from one of “us.” There doesn’t seem to be a middle ground on this point: one is either loyal to Israel as is, or a self-hating Jew.

As difficult as it is for those of us who feel deeply bound to the Jewish State and those who feel disillusioned though ultimately loyal, it is critical for us as a community to open to the possibility that those who express “anti-Israel” sentiments might be expressing deeply Jewish intuitions. We can choose not to fragment ourselves into camps and believe we are resilient enough as a community to hear what our fellow Jews feel they need to contribute to the conversation. If there is a truth with which we need to grapple together, we will all be stronger for it. Our dialogue around Israel must be for us a *machloket l’shaym shamayim*, one serving the highest of purposes, not one that tears us apart. At the end of the day, what is at stake for us all as Jews is how true we each can be in reflecting the face of Torah when we speak and act on our convictions. It’s not only remaining in relationship with Jews of all kinds but in the pureness of our intentions in how we engage in difficult conversations that we may discover again how bound we are to one another and find a way forward.

# Temple Board & Committee Members

All email addresses below end with @bethhatephila.org

## TEMPLE OFFICERS

JoAnne Rosenblum, President	president
Sam Kaplan-Gershon, 1 <sup>st</sup> V.P.	firstvp
Karen Hyman, 2 <sup>nd</sup> V.P.	secondvp
Marty Mann, Secretary	secretary
Joe Karpen, Treas.	treasurer
Larry Weiss, Past Pres.	pastpres

## BOARD OF TRUSTEES

Alice Cohen	trusteea
Bob Davis	trusteeb
Tikkun Gottschalk	trusteec
Judy Kaplan	trusteed
Gail A. Manheimer	trusteee
Ron Manheimer	trusteef
Sabrina Rockoff	trusteeg
Nelson Sobel	trusteeh
Sherrill Zoller	trusteei

## CONGREGATIONAL COMMITTEES

### L'Dor V'Dor – Capital Campaign

<i>Larry Weiss &amp; Joe Karpen, Co-Chairs</i>	longrange
--	-----------

## BROTHERHOOD

<i>Joe Gates &amp; Tony Joseph, Co-Presidents</i>	brotherhood
---	-------------

## BUILDING

<i>Larry Weiss</i>	pastpres
--------------------	----------

## CARING COMMUNITY

<i>Dionne Kempenich, Coordinator</i>	caringcommunity
--------------------------------------	-----------------

## CEMETERY

<i>Buddy Rosenberg, Chair</i>	admin
-------------------------------	-------

## CHOIR (Adult)

<i>James McMahon</i>	choir
----------------------	-------

## ENGAGEMENT

<i>Karen Hyman, Chair</i>	engagement
---------------------------	------------

## CONGREGATIONAL COMMITTEES & Sub Committees

### FINANCE

<i>Joe Karpen, Chair</i>	finance
--------------------------	---------

### GOVERNANCE

<i>Sam Kaplan, Chair</i>	firstvp
--------------------------	---------

### HARDLOX

<i>Marty Gillen, Chair</i>	hardlox
----------------------------	---------

### HOUSE

<i>Bob Davis, Chair</i>	house
-------------------------	-------

### LANDSCAPING

<i>Nelson Sobel, Chair</i>	landscaping
----------------------------	-------------

### LIFE LONG LEARNING

<i>Saul Perla, Chair</i>	lifelonglearn
--------------------------	---------------

### MEMBERSHIP

<i>Chuck Rosenblum, Chair</i>	membership
-------------------------------	------------

### NOMINATING

nominating
------------

### RELIGIOUS SCHOOL

<i>Tikkun Gottschalk, Chair</i>	religiousschool
---------------------------------	-----------------

### RITUAL

<i>Ron Manheimer, Chair</i>	ritual
-----------------------------	--------

### SECURITY

<i>Hugh Feinberg, Chair</i>	security
-----------------------------	----------

### SISTERHOOD

<i>Henrietta Cuttler, President</i>	sisterhood
-------------------------------------	------------

### SISTERHOOD GIFT SHOP

<i>Lana Waltzer</i>	giftshop
---------------------	----------

### TIKKUN OLAM

<i>Judy Leavitt &amp; Sherrill Zoller, Co-Chairs</i>	tikkunolam
--	------------

<i>Menorah Editor:</i> Barbara Jaslow — <a href="mailto:menorah@bethhatephila.org">menorah@bethhatephila.org</a>
--

## President's Message



On March 4<sup>th</sup> our Temple Community will gather to celebrate and observe Purim. It is a joyous holiday, filled with the sound of groggers, a “spiel,” hamentaschen, and the directive to “imbibe.” Foremost, of course, it is the story of Queen Esther, who ultimately made the decision to stand up for her Judaism and her People. Her voice was heard by King Ahasuerus

and the Jews of the land were saved from Haman's decree of persecution. Queen Esther became a heroine and a role model, certainly for the Jewish girls of my generation.

Much has changed in the over twenty-three hundred years since the times of Queen Esther. Today, in most Western cultures, at least, women are afforded legal rights equivalent to men. While I know that even in the United States that point can be argued based on the continuing fight for reproductive rights, equal opportunity and pay, as well as laws governing domestic violence and more, our society is based on the principal of equality under the law. We are certainly allowed the ability to observe our respective religions as we so choose. That is not the case in Israel. Women, for example, continue to be banned from reading from our Sacred Torah at the most holy of places, the Western Wall. The fight for gender equality and religious pluralism goes beyond this and encompasses multiple aspects of Israeli law and society.

Women of the Wall (WOW) was founded twenty-six years ago to “achieve the social and legal recognition of our right, as women, to wear prayer shawls, pray and read from the Torah collectively and out loud at the Western Wall.” Throughout these twenty-six years, despite arrests, humiliation, harassment and even violent acts, this organization has had success in gaining greater egalitarian access toward prayer at the Wall. In November, 2014, a miniature Torah was smuggled into the women's section and the first Bat Mitzvah was held at this site. Given the democratic and Jewish principles upon which Israel was created, it is with sadness that I look upon the need for a continuation of this struggle for the right to pray as one believes and where one wants without gender bias.

I am heartened by the role our Reform Movement takes to support the efforts of those who are continuing to work for equality and freedom for women and all Israelis. Women of Reform Judaism is, of course, dedicated to “strengthening the voice of women” and supports the work of WOW, the Israel Religious Action Center (as well as RAC), the Israel Movement for Progressive Judaism and almost thirty Reform Women's groups in Israel to promote religious pluralism and gender equality. ARZA, which is the Zionist Organization of the Reform Movement, is a continuing voice in promoting an Israel that is both Jewish and Democratic.

Reform Judaism in Israel is growing and with it the hope for the advancement of an increasingly pluralistic society grows as well. According to the Israel Movement for Progressive Judaism there are forty Reform Congregations in Israel. The Reform Movement runs fifty preschools and eight schools, a summer camp and other year round activities for Jewish youth. Our Hebrew Union College has long been a presence in Israel and all Reform Rabbinic students spend a year learning and living there.

There are multiple ways we as Reform Jews can support the endeavors of those working for equality and religious pluralism in Israel. Certainly, remaining informed by following the work of WOW, WRJ and ARZA is vital to us all. Importantly, we all have the opportunity to vote, now and through the end of April, in this year's World Zionist Congress elections and include our voices with the Reform Movement's stand to promote equality. If you would like to do so, go to

[www.reformjews4israel.org/vote](http://www.reformjews4israel.org/vote).

Further information is on the ARZA website.

I am not attempting to enter into a political dialogue about Israel, but merely to remind us, that even in a country such as Israel, gender bias is permitted by law and religious pluralism is not mandated. Equality is an inherent value within Reform Judaism. Just as Queen Esther used her voice to protect and save the Jewish people, our mandate is to continue to be a voice for equal rights of all. When our fellow Jews are denied these rights, is it not important that we stand together in support and action?

May Queen Esther remain a role model of religious dignity for us all.

B'Shalom,  
**JoAnne**

# Learning Corner

## Birds, Fasting and Mozart

Suppose you were taking one of those intelligence tests that asks, "Which of the following doesn't belong: Bird, Fasting, Mozart?" Well, Fasting, because birds trill and Mozart wrote *The Magic Flute*. Nice try. Your IQ hasn't dropped a notch. Actually they can all be connected. Here's how.

Recently, I bought a buffet style, clear plastic bird feeder; the kind that attaches to a window with suction cups. Until then, I couldn't tell the difference between a house finch and a purple one. With the feeder located just outside my home office window, I could see, up close, my little winged friends. And with the help of bird identification websites, I not only learned to recognize them, I also reinforced my new knowledge by making up a page with pictures and names that I taped on the window below my feeder. Now pine siskins, tufted titmice, Carolina chickadees and those house finches are as identifiable as the bok choy and arugula I pick out at the market.

So what made the difference? The birds and I drew closer — a few feet from eye to eye and beak to nose. I observed how they use their tiny feet to hold and desiccate seeds and, as competitors, to obey the pecking order. In turn, they got to learn a little about me — the seed-dispensing silhouette behind the glass.

Birds have been with us since the creation. Adam and Eve (Genesis 1:28) were instructed to be responsible for "the fish of the sea and the birds of the air." The young Zipporah proverbially flew like a *tzippor* (Hebrew: bird) to bring her new boyfriend, Moshe, to meet her father.

Now about fasting. A sometimes overlooked part of the Megillah telling about the dangers faced by Persian Jews under the reign of King Ahasuerus and his homeland security director, Haman, is the Fast of Esther. Recall that just before she risks death by going unbidden before the king in order to plead for the protection of her people (the king doesn't know she's Jewish), Esther tells her Uncle Mordaccai to declare a three-day fast for all the Jews of the realm.



It's not completely clear why she wants this. Scholars have their opinions. It's to cover the traditional fasting days in case the Jews of Persia are exiled or put to death before they can fulfill the commandment; it's to declare a kind of red alert condition that a war is imminent; it's so Esther can use the whole tribe to bolster her willpower and concentration in order to succeed with a death-defying task. Take your choice. In the eighth century, the three days of fasting were reduced to a dawn to dusk minor fast. How many among us observe it before we head to synagogue to torture each other's ears with groggers and foot stomping?

Fine, so birds and fasting. What's the connection? Let the suspense build a little.

March in Asheville is Mozart awareness month. This is due to the presence of the famous concert pianist Emanuel Ax, the son of Polish Holocaust survivors. Each year Mr. Ax donates some of his expensive time to classical music organizations that, in turn, put on concerts, lectures, banquets and even plays (in our case, *Amadeus*) to help strengthen the financial condition of their symphonies and orchestras. The Asheville Symphony chose to make Mozart the center court of its March Madness. Why Mozart and not, say, Beethoven, Brahms, or even Bach — the Three Bs of the classics? Look at how many went to see *Amadeus*, the movie, compared to the one about Beethoven, *Immortal Beloved*? Bach has no feature-length movie because he was too normal. Brahms? His day on the silver screen is yet to come.

So what about Mozart and the birds and the fast?

Mozart had a pet starling that sang a melody he transcribed into the opening theme of the third movement of his Piano Concerto No. 17. Like me, by drawing closer, he made the song of the starling his own. So it is with learning (about people, Torah). Perhaps you are familiar with *kapparot*, swinging a live chicken over your head symbolically to transfer your sins to the hapless and about to be sacrificed bird, a ritual performed the afternoon before Yom Kippur and — you got it, the beginning of your fast. Unfortunately, Emanuel Ax (please don't associate the name with the chicken) will perform Piano Concerto No. 14, not 17, while in Asheville. While you can't have everything, you can have birds, fasting and Mozart.

**Ron Manheimer, Chair,  
CBHT Ritual Committee**

## Tikkun Olam Committee

I promised last month that the March column would be a summary of our retreat, at the end of January, to develop the objectives and plans for the next 18 months. Over twenty congregants devoted much of a day to creatively work on determining what issues/programs might create “fire in the belly” for many in our congregation. We defined our goals as working to “repair the world” through individual action, congregational involvement and community engagement. This included a commitment to incorporate goals from the congregational strategic plan as well as assure:

- Intergenerational involvement
- Inclusion of all segments of the congregation
- Being sensitive to different perspectives amongst congregants
- Working with and including students from the religious school
- Expanded education about the policy implications of programs we are working on
- Positive working relationships with other Jewish and community groups
- Meeting times for programs and planning to occur when working families can attend

Tikkun Olam has been engaged in many programs in the past few years, including Room in the Inn, Hope to Home teams to move folks into housing, Habitat, MANNA collections and food packs, the Veterans Shelter meals, street cleanups, the sacred garden, the chicken souper bowl, and various educational programs, most recently about changes in the voting laws, registration and early childhood development.

Recognizing that we are not ready to discontinue any of these programs because we have been successful and so many folks participate, we decided that what we need to do is a better job of educating congregants about the policy issues underlying the need for these programs; such as poverty, homelessness, food insecurity, and economic injustice. As a result we decided to organize our programs and actions around the theme of **economic justice**. Our focus will be on aspects related to early childhood learning, adequate housing, adequate and healthy food intake, environmental health and enhancing equality of racial, ethnic, religious, and gender groups. We are creating a calendar of Jewish holidays and events that we can incorporate into our program focus.

To begin, we have formed three priority working groups. We ask you to consider joining us as we plan and institute these programs:

- **Housing** – chaired by Barb Stickle
- **Education** – chaired by Sam Hausfather
- **Food** – chaired by Jerry Plotkin

You will be hearing more as we develop ideas and seek input. The Tikkun Olam committee serves to provide opportunities to educate, engage, and enact programs to involve everyone. Our success in improving the world enhances the quality of life for the giver as much, if not more, than the recipient. We ask you to join us in this effort.

### Announcements

- Please note that regular meeting times have changed. We will now meet on the third Thursday of every month at 7 PM in the Dave Social Hall. Our next meeting is **Thursday, March 19<sup>th</sup>**. Any congregant is welcome to join us.
- The temple will NOT be having a separate CSA (Community Supported Agriculture) fresh vegetable box this year. Thanks to *Ellen Chelms*, who has single-handedly managed the program for the last 5 years. The committee decided that there are now many opportunities from different farms to buy shares and we encourage congregants to do so as well as support local farmers markets. If anyone wants to continue with the Big Ivy Farm share, they plan to deliver boxes to the JCC and would welcome temple members to join. Please contact Paul at Ivy Creek Family Farm, <http://ivycreekfarm.com/csa-farm-shares/> if you are interested.
- Carolina Jews for Justice/West has had some outstanding programs in February on racial justice issues. The first, at CBHT, was given by Deborah Miles, from the Center for Diversity Education at UNCA, and Dr. Darin Waters, professor in the history department, on the importance of memory and the slave trade in Asheville. The second is a program, on February 22<sup>nd</sup>, at YMI consisting of a panel of local folks who were involved in civil rights and their reactions to the movie Selma. For more information about the programs and upcoming events, go to <https://carolinajews.wordpress.com/>
- Look forward to another season of fresh food from the temple garden! We intend to grow vegetables to teach Tikkun Olan to our religious school children, temple members, and to share our bounty with the needy, as well as some treats at the onegs. Get in touch with *Jenny Mercer* [mersweet222@gmail.com](mailto:mersweet222@gmail.com) if you would like to participate or make donations.

*Judy Leavitt*  
*CoChair, Tikkun Olam*



## Sisterhood News



We hope you are all keeping warm through this chilly bout of winter. Hang in there — Spring is right around the corner. We, the Temple and the Sisterhood, have some wonderful activities for all of us to look forward to this Spring.

THE SISTERHOOD SPRING DINNER DANCE IS SATURDAY, MARCH 14<sup>th</sup>, at 6 PM.

Our Dinner Dance will have good vibrations for dancing and listening with the SIMPLE FOLK BAND (back by popular demand) A variety of music including folk, rock, and Americana from the 50's through the 80's will make the evening perfect for dancing, listening, and singing along. What's for dinner?—a scrumptious Italian meal with delicious choices for everyone, including vegans, and those eating gluten-free. The dance will be at CBHT's Dave Hall. This is a FUN SISTERHOOD FUNDRAISER to help us support the Temple in the areas of RELIGIOUS SCHOOL, L'DOR V'DOR, TIKKUM OLAM AND OTHER TEMPLE ACTIVITIES. So come, let's party and be part of the fun! Make your reservation by using the flyer that is on **page 15** or contact **Gail Sobel** at 255-0473 or [gnsobes@charter.net](mailto:gnsobes@charter.net), or leave your name with Julie at the office. You can drop off your reservation form and check in the Sisterhood box in the workroom across from the Temple office.

PASSOVER SEDER, SECOND NIGHT, SATURDAY, APRIL 4<sup>th</sup>, in DAVE HALL.

CBHT will be hosting the second night Passover Seder in Dave Hall, Saturday, April 4<sup>th</sup>. Kelsey's Restaurant will again cater our Seder. **Lana Waltzer** and her helpers will be overseeing the details. A sign-up flyer is in the Menorah.

SISTERHOOD'S SPRING INFORMAL LUNCHEON, SUNDAY, APRIL 19<sup>th</sup>.

Everyone loves Sisterhood's informal luncheons. The food is great; there are lots of laughs, and lively conversation! **Lana Waltzer** will be hosting this event at her clubhouse in Candler on Sunday, April 19<sup>th</sup>. **Alvin Cuttler**, a beekeeper for more than 35 years, will give an informative presentation about bees, pollinating insects, and the honey making process. There will be sliced apples and a sample of his homegrown honey for everyone!! The flyer for this event is in the back of this Menorah.

SISTERHOOD MOTHER'S DAY SHABBAT SERVICE FRIDAY, MAY 8<sup>th</sup>.

For the second year, some of the Religious School children and their mothers will participate in this service with members of the Sisterhood. **Jackie Itzkovitz** and **Barbara Stickle** will coordinate this event.

**Henrietta Cuttler**,  
President 2014-2015



## Brotherhood News



### Brotherhood participates in MANNA backpack project:



I want to thank the many Brotherhood members and Tikkun Olam committee members who came to Manna for the backpack project on Friday, February 6<sup>th</sup>. Approximately 25-30 people checked-in, but found the work space and work assigned by Manna staff could not accommodate everyone. According to Manna staff, the normal space used for the backpack project was unavailable because the floor was being repaired.

While I can't remember everyone who checked-in, I would like to identify as many as possible who stayed to work. **Saul Perla, Joe Chasin, Joe Gates, Marty Gillen, Mark Boyd, Gerry Plotkin, Judith Fain, Sam Kaplan, Leon Roccamora, Chuck Rosenblum, Bev Harris, Marty Mann, Kathryn Mann, Sandra Layton, Nicole Alexandyre and Ronna Davis.**

### Sunday Brunch — March 15<sup>th</sup> @ 10 AM

Our guest speaker will be the **Honorable Esther Manheimer**, Mayor of the City of Asheville and a member of Congregation Beth HaTephila.

Mayor Manheimer will provide a presentation on the three newly designated Innovation Districts and their positive impacts. The three districts will include the River Arts District, Charlotte Street Corridor and the South Slope. Regardless of your political affiliations, I'm sure you'll find this discussion regarding capital improvement projects for the city interesting.

As in the past, breakfast will include eggs, lox, bagels, juices, coffee for the astoundingly low price of \$8 per person or \$15 per couple. Please let us know you're coming – Call Joe Gates – 280-0087 or Joel Mazelis – 658-4149. See the flyer in the back of the Menorah for more details.

**Joe Gates**  
Brotherhood Co-President

# Our Temple Family



Mazel Tov to **Ron Manheimer** on the publication of his new book, *Mirrors of the Mind: Reflecting on Philosophers' Autobiographies*. Check out his publisher's website for more information:

<http://jorvikpress.com/books/mirrors-mind>.



## Get Well Wishes to:

Catherine Alter  
Woldemar Dogny  
Share Friedman  
Allen Hope  
Jan Joseph

Steve Liebenhaut  
Frank Miller  
Rabbi Ratner  
Paul Weinberg



Condolences to **Jean Reese**, on the death of her stepfather, **Brandt Kuperstock**.



Happy 85<sup>th</sup> birthday to **Dave Blumlo** from Judy, Bonnie, Marcy & Tom.



Donations of food cards go a long way toward helping members of our community who are having a hard time right now. If you want to help, please make a donation to the Rabbi's Discretionary Fund and indicate that it is for the purchase of food cards to help people in need. Thank you.



Please remember that the Temple office is now on a winter schedule. The temple hours are Monday – Friday: 9:00 AM to Noon and 1:00 PM to 4:00 PM. Drop in hours are 10-11 AM Mon. – Fri. and 4-5 PM

Monday – Thursday. Other times by appointment only.

Even if the Administrator is in the office prior to or after those hours, the office is closed. That time is meant for the Administrator to accomplish tasks that must be done uninterrupted. Please respect the Administrator's time by coming to the office only during open hours. Thank you!



**Note:** Rabbi Meiri's cover page article in this issue of the Menorah was featured on the most recent Shalom Hartman Institute blog entitled "Call and Responsa."

Contact	E-Mail	Telephone
<b>Julie Sherman</b> , Temple Administrator Monday to Friday: 9:00 AM to Noon & 1:00 to 4:00 PM. <b>Drop-In Hours:</b> Mon. to Fri. 10:00 to 11 AM & Mon. to Thurs 4:00 to 5:00 PM	<a href="mailto:admin@bethhatephila.org">admin@bethhatephila.org</a>	253-4911, ext. 10
<b>Rabbi Batsheva Meiri</b>	<a href="mailto:rabbi@bethhatephila.org">rabbi@bethhatephila.org</a>	253-4911, ext. 10
<b>JoAnne Rosenblum</b> , Temple President	<a href="mailto:president@bethhatephila.org">president@bethhatephila.org</a>	274-4431

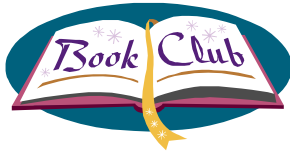
In case of an emergency outside of regular office hours, please call the Temple office at 253-4911 and the voice mail recording will indicate whom to call and will provide the telephone number.

# Temple Happenings



## Capital Campaign Update as of February 16, 2015

Fund Raising Goal	\$4,400,000
Total \$ Pledged to Date	<b>\$3,496,351</b>
% of Target Pledged	79.5%
\$ Paid to Date	<b>\$2,212,871</b>
# of Active Families Pledged	172
% of Active Families Pledged	66.2%



The Book Club will start at 2 PM in Dave Social Hall.

- Mar. 9<sup>th</sup> — "All the Light We Cannot See"  
by Anthony Doerr, Leader: *Evelyn Gates*
- Apr. 13<sup>th</sup> — "Still Life with Breadcrumbs"  
by Anna Quindlen, Leader: *Kathryn Liss*
- May 11<sup>th</sup> — "Once We Were Brothers"  
by Ronald H. Balson,  
Leader: *Alyse Wolfson*
- June 8<sup>th</sup> — "The All Girls Filling Station"  
by Fannie Flagg, Leader: *Ethel Mayer*
- July 13<sup>th</sup> — "The Rosie Project" by Graeme Simsion,  
Leader: *Helen Pincus*

### Happy Reading!

For further information contact *Sue Lerner* 484-4226 or  
(cell) 908 568-7255.



Don't let Spring Fever keep you from sending in  
your Menorah article on time.

The deadline in **Sunday, March 15<sup>th</sup>**.

Thank you — *Barbara Jaslow*  
[menorah@bethhatephila.org](mailto:menorah@bethhatephila.org)



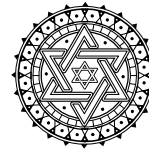
## March Onegs

- Mar. 6<sup>th</sup> O'Connor/Solnick Family in honor of  
Reuben's Bar Mitzvah
- 13<sup>th</sup> CBHT Board
- 20<sup>th</sup> Charles Crumpler
- 27<sup>th</sup> Lorre Diamond, Mark West and  
Elizabeth Janion



## NEW IN OUR LIBRARY

*I Am Forbidden* by Anouk Markovits. A family is torn  
apart by beliefs in this journey inside the Hasidic sect.



## Friendship Circle

**Saturday, March 14<sup>th</sup> @ 10 AM**

Join us for fellowship, noshing and discussion on  
Saturday, March 14<sup>th</sup>, at 10:00 AM in Dave Hall.

Check the weekly e-blasts for info on the current events  
topic to be discussed.



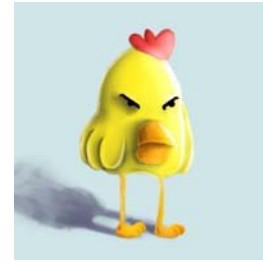
When scheduling a meeting to be held  
at the Temple, **PLEASE** be sure to contact Julie  
**BEFORE** you set the date and time to ensure there's  
space to hold it.



The Membership Committee is seeking drivers  
who can OCCASIONALLY provide rides to our  
elderly and physically challenged congregants.  
If you would consider being a rotating driver and  
providing a real mitzvah, please contact **Chuck**  
**Rosenblum** at 274-4431.



# Temple Happenings



## Nominations for Board Service are Open

The Nominating Committee will be meeting soon to identify congregants who would be willing to serve on the Board beginning in the next fiscal year (starting July 1, 2015). A term is set to span three years and those serving as at-large Trustees may serve for up to two consecutive terms.

Board service is both an honor and a duty to the CBHT Community. It is the dedication of those around us that has kept our temple going for nearly 125 years. We benefit by the contributions of those with a variety of traits. Some are visionary, some are driven by a desire to see priorities highlighted and implemented, yet other folks want to learn how the operation actually functions while helping to make sure that they too are a part of its success. We are a big tent and have the need for many sorts of skills.

If you yourself are interested or have some thoughts as to who you think would be a contributor to the CBHT Board, please let me know. The Nominating Committee is getting under way shortly and would like to weave in your ideas. Please either email me at [pastpres@bethhatephila.org](mailto:pastpres@bethhatephila.org) or call me at 251-1628 to share your suggestions.

Larry Weiss



## Chochma

*A lign darf men baklaiden, der emes ken gain naked.*  
A lie has to be clothed, the truth can go naked.

*A patch fargayt, a vort bashteyt.*  
A slap's effects will go away, nasty words stay.

*Gring tsu zogen, shver tsu trogen.*  
It's easy to promise, but hard to fulfill.

Rubin Feldtsein

## A Souper Time

Thanks to everyone who helped make this year's Chicken Souper Bowl another great time and great success. Over 180 CBHT tasters enjoyed 15 delectable and diverse CBHT soups ranging from traditional Jewish Penicillin of chicken and pasta to vegetarian Miso Matzo Ball soup! Over \$1600 was raised to support the Tikkun Olam committee projects.

Congratulations to this year's winners!

*Traditional soup:* 1st place – CBHT Board of Trustees, Rx: Jewish Penicillin; 2<sup>nd</sup> place – Alice Cohen and John Noblitt, Hungarian Goulash. *International soup:* 1<sup>st</sup> place – Sisterhood, Jewish-Italian Wedding Soup; 2<sup>nd</sup> place – Marty and Kathryn Mann, Grand Safari Soup. *Wild Card soup:* 1<sup>st</sup> place – CBHT Gift Shop, Velvet Squash Supreme Soup; 2<sup>nd</sup> place – Tracy Levi, Butternut Squash Soup. *Best costume(s)* went to the Sisterhood brides, and Marty and Kathryn Mann won *best decorated table* with their African safari.

A big thank you to **Jean Karpen** and **Jenny Mercer** for donating their beautiful quilts for the very successful raffle. And thanks to these local businesses for prizes, gifts for the cooks and bread for all: Ten Thousand Villages Asheville, Rocky's Hot Chicken Shack, Avenue M, Chiesa, Whit's Frozen Custard, Fuddruckers, King Daddy's, Biscuit Head, Carolina Mountain Bakery and Geraldine's. Thanks also for financial donations from Temple members **Gail Manheimer**, **Idelle Packer** and **Bob Shuster**.

This year's event was coordinated by a Souper Team including **Joe Chasin**, **Alice Cohen**, **Nicky** and **Ty Erickson**, **Cindy Feiler**, **Beverly Harris**, **Chuck Itzkovitz**, **Tracy Levi**, **Jenny Mercer**, and **Helene Stone**. Thanks to the Tikkun Olam committee members and so many others for helping in a variety of ways. Please email any suggestions you have to Alice at [alicennc@gmail.com](mailto:alicennc@gmail.com) to include in next year's planning.



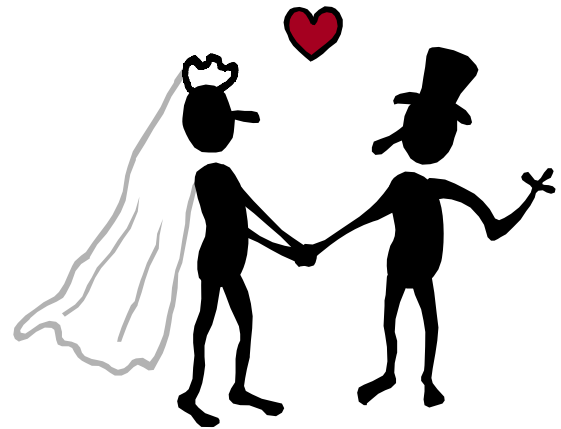
## Celebrate With Our Temple Families

### MARCH BIRTHDAYS

1 Iva Morris	19 Lillian Johnson
2 Molly Schantz	19 Kathryn Mann
2 Alicia Younger	20 Shoshana Slatky
3 Isaac Jaben	21 Sandy Leder
3 Lori Miller	21 Theo Margaritov
3 David Tuch	21 Paul Weinberg
5 Evelyn Gates	22 Alison Gilreath
5 Marissa Green	25 Susan Cohen
5 Carolyn Sirkin	25 Zane Duncan
6 Carol Wenom	25 Steve Huter
7 Robert Carr	25 Mercedes Kaufman
8 Steven Liebenhaut	26 Julia Feiler
8 Tamar McMahan	26 Carl Johnson
10 Erin Huter	26 Ned Simon
10 Alison Schantz	27 Jay Bursky
11 Caren Zivony	27 Devorah Reed
12 Bertrand Horwitz	27 Doris Sgan
12 Noa Meiri	28 Noah Damon Wilde
14 Richard LaBrie	29 Charles Erde
14 Saryn Livengood	29 Mark Jaben
14 Alec McMahan	29 Dennis Winner
14 Eric Naimark	30 David Leader
15 Isaac Rockoff	30 Asher Ring
16 Joshua Sirkin	30 Jay Silverman
16 Lana Waltzer	31 Bill Seepe
16 Sherrill Zoller	

### MARCH ANNIVERSARIES

1 Harris & Laura Livingstain
2 Theodore & Sherril Zoller
7 Frank & Alison Gilreath
10 Neal & Andrea Ward
16 Fred & Vivian Smith
16 Robert Sweetser & Jenny Mercer
21 Preston & Karla Diamond
22 Joel & Julie Schantz
27 Frank & Hellen Goldfarb
27 Terry & Robin May



**PURIM IS COMING!**  
**WEDNESDAY, MARCH 4<sup>TH</sup>**  
**POTLUCK AT 6:00 PM**  
**MEGILLAH/SCHPIEL AT 6:30 PM**

This year the schpiel will be Macbeth meets the Wizard of Oz meets Esther and Mordecai! So if you love witches and wizards and little dogs too, you are in for a real treat! Come in costume—everyone in costume gets a prize! There will be a raffle at the potluck. If you come in costume you get a raffle ticket, if you bring a potluck dish, you get another raffle ticket. Then at services we will enjoy the megillah/spiel, and eat delicious hamentaschen (provided by the Temple Sisterhood) afterwards!



### Passover

Passover starts on the evening of Friday, April 3<sup>rd</sup>. There will be no Shabbat services at the Temple that night. On Saturday, April 4<sup>th</sup>, at 10 AM, we will have morning Shabbat/Festival services in the sanctuary and then the 2<sup>nd</sup> night Seder will start at 5:00 PM in Dave Hall.

See the form on **page 16** to make your dinner reservations.

# □ Gifts & Memorials □

The Congregation and its Trustees gratefully acknowledge the following gifts:

## RABBI'S DISCRETIONARY FUND

<u><b>DONATED BY</b></u>	<u><b>IN MEMORY OF</b></u>
Lana Waltzer	<i>Harvey Waltzer</i>
Barry & Barbara Katell	<i>Elvie Katell</i>
Al & Joyce Hiller	<i>Joan Hiller</i>
Mr. & Mrs. Robert Bayer	<i>Abraham H. Bayer</i>

<u><b>DONATED BY</b></u>	<u><b>IN HONOR OF</b></u>
Kenneth & Deborah Wertheim	<i>with appreciation</i>
Dave & Judy Blumo	<i>Dave's 85<sup>th</sup> birthday</i>

## MUSIC FUND

<u><b>DONATED BY</b></u>	<u><b>IN MEMORY OF</b></u>
Gail Eisnitz	<i>Phyllis Scher</i>

## TIKKUN OLAM FUND

<u><b>DONATED BY</b></u>	<u><b>IN HONOR OF</b></u>
Ted & Sherrill Zoller	<i>Alice Cohen's special birthday</i>

## RELIGIOUS SCHOOL DISCRETIONARY FUND

<u><b>DONATED BY</b></u>	<u><b>IN MEMORY OF</b></u>
Abraham Ainspan	<i>Ann Ainspan and Samuel Squire</i>

## B. GOLDSTEIN RELIGIOUS SCHOOL FUND

<u><b>DONATED BY</b></u>	<u><b>IN MEMORY OF</b></u>
Harris & Laura Livingstain	<i>Priscilla Livingstain</i>

<u><b>DONATED BY</b></u>	<u><b>IN HONOR OF</b></u>
Bert & Hertha Horwitz	

*Howard Jaslow "Happy Ninth Decade!"*

## GENERAL FUND

<u><b>DONATED BY</b></u>	<u><b>IN MEMORY OF</b></u>
Bert & Sharon Rothman	<i>Isidore Rothman</i>
Phyllis Sultan and family	<i>Norman Sultan</i>

<u><b>DONATED BY</b></u>	<u><b>IN HONOR OF</b></u>
Tony Marder	<i>Buddy Riesenber</i>

## L'DOR V'DOR CAPITAL CAMPAIGN

<u><b>DONATED BY</b></u>	<u><b>IN MEMORY OF</b></u>
Howard & Barbara Jaslow	<i>Myrtle Jaslow</i>
Howard & Barbara Jaslow	<i>Yetta Karney</i>
Daniel & Gloria Pincu	<i>Leon Pincu</i>
Idelle Packer and Bo Farson	<i>Annette Packer</i>

<u><b>DONATED BY</b></u>	<u><b>IN HONOR OF</b></u>
Abraham Ainspan	<i>his great-granddaughters,</i>
	<i>Aurora Kennedy and Mira Kennedy</i>

Harriette Winner

Jenny Mercer



## Community Happenings

### In Her Father's Eyes:

### A Slovak Childhood in the Shadow of the Holocaust

March 2<sup>nd</sup> — 27<sup>th</sup>, UNC Asheville, Karpen Lobby

2015 marks the 70<sup>th</sup> anniversary of the end of WWII when the slave labor and death camps of The Shoah were liberated. *In Her Father's Eyes* tells the story of one child and one family before the encroaching horrors befell them. It is the life of Kitty Weichherz, told by her observant and devoted father Bella Weichherz. The exhibit uses family photographs and the father's diary entries to offer a window into the everyday life of birthday parties, the first day of school, a first boyfriend. The Weichherz' were likely murdered sometime in 1942 or 43 at Sobibor Death Camp. This exhibit is on loan from the Kennesaw State University Holocaust Museum. Additional panels on display will include the stories of families from Asheville who witnessed or survived the Shoah.

### PROGRAMS:

#### Opening Reception and Lecture

#### Did We Learn Anything?

#### Reflections of the Holocaust 70 years Later

Opening Reception

Thursday, March 5<sup>th</sup>, 6:00 – 7:00 PM — Karpen Lobby

Opening Lecture — 7:00 PM — Karpen 038

Dr. Mark Gibney, the UNC Asheville Belk Distinguished Scholar, is an international authority on the legal implications of Human Rights and Genocide. Dr. Gibney will speak on the lessons of the Holocaust and the contemporary context of Genocide.

#### Music of the Holocaust with Bandana Klezmer and Dr. Walter Ziffer

Wednesday, March 25<sup>th</sup> at 7:00 PM

Alumni Hall, Highsmith Student Union

The Shoah brought about the murder of most Klezmer musicians and with it the music they played for weddings and other joyous occasions. As many of the melodies were in the oral tradition and passed from one musician to the next, much was lost when the Klezmorum were murdered. *Bandana Klezmer* will share some tunes of the musicians that survived, including German Goldenshteyn. In addition, Dr. Walter Ziffer will share his story of liberation.



# Yahrzeits

The Yahrzeit policy at our Temple is as follows:

- The Anniversary date can be celebrated either in the English calendar or the Hebrew calendar.
- A letter to remind you about your upcoming Yahrzeit is sent to you two weeks before the actual date.
- The name of your loved one is read at the Friday evening service immediately before the date of the Yahrzeit.
- If your Yahrzeit actually falls on a Friday, it will be read the previous Friday.
- If, for any reason, changes must be made, please call the Office before the scheduled date of service.
- Please keep the Temple Office informed of any incorrect dates or new dates you wish to include.
- It is important to give the Office the complete date (month/day/year) and whether it is the English or Hebrew date.
- Please take a moment to update the Office now. Thank you.

## March 6, 2015

David Davis  
 Gerald Eisnitz  
 Esther M. Fruhauf  
 Anna Galumbeck  
 Rose Kline  
 Marty Lee  
 Nettie Milberg  
 Charles Harry Reader  
 Louis Sgan  
 Sarah Leah Shwedick

## March 13, 2015

Sally Bard  
 Dorothy Feuerzeig  
 Shifra Gershon  
 Robert Janowitz  
 Tessie Karpen  
 Solomon Kaye  
 Richard Leavitt  
 Rosalyn Levine  
 Alfred Lichtenfels  
 Arnold Litteken  
 James C. Myers  
 Carl E. Patrick  
 Rose Raskin  
 Arthur M. Reader  
 Estelle Rosenberg

## March 20, 2015

Ella Galumbeck Bane  
 Ruth Clay  
 Phillip Dave  
 Nina Avants Epperson  
 Phoebe Gould  
 Beatrice Greene  
 Andrew Gross  
 Alice Levy Hiller  
 Desse Lichtenfels  
 Harry Mills  
 Robert Shaver  
 Charles Skulnik  
 David M. Ullman  
 Laurel Elizabeth Zaks

## March 27, 2015

Austin Allen  
 Joseph Gergel  
 Syd Harris  
 Lillian Kaye  
 Rose Kaye  
 Joseph Kline  
 Jeanne Kranz  
 Sally Schwartz Lapof  
 Harry Lehman  
 Sabrina Tina Louise  
 Irving Manheimer  
 Paul Novak  
 George Packer  
 Norman Schantz  
 Saul Sherman  
 Ruth Weiss  
 Patricia Weitsman



### Caring Community — Our Vision Statement:

*The CBHT Caring Community's vision is of a congregation where people support and care about one another and are able to participate fully in their community. Our purpose is to make a positive impact on the lives of our congregants and their families by creating and providing a personal touch that enhances well-being and inspires them to stay connected.*

**Bakers/ Meal Trains** – We provide meals through the meal train and bakery items when needed.

**Bikkur Cholim** – This team continues to visit our congregants in the hospital, in rehabilitation and in hospice.

**Kehila** – We send out cards to our members in crisis, healing from an illness, and most especially, to let them know we are thinking of them, that they're in our hearts and prayers.

**Knitters** – CC has been blessed with several women who are willing to knit beautiful "healing prayer shawls" for those facing a serious illness or the loss of a loved one, and we have some new plans for the future.

**Nechama** – This is the most meaningful act you can perform for a family that has lost their loved one. We set up for the Shiva service, provide sweets or assist the family in arranging for a light meal following the funeral or memorial service.

**R'Fuah** – Maintain contact with our congregants who are recovering from an illness at home and determine if their needs are being met and/or they need further assistance.

**Simchas/Connections** – We remember our young people while they are away from home, welcome new babies to the family, provide meals when needed, support conversions, send cards of congratulations to the parents of the wedding of their children, special birthdays and anniversaries.

**Special Needs** – Our team leaders continue working with our children that are in need of a bit of one-on-one. They are working closely with their parents as well, giving support.

This is our list of teams that you might want to be a part of. Please call or email, **Dionne Kempenich**, Coordinator at 665-1125 or [dionnemk@gmail.com](mailto:dionnemk@gmail.com).



*“Uniquely Jewish is the obligation of the community through each and every one of its members to seek out those in need and draw them in close where we know they will gain strength.”*  
(Association of Jewish Family and Children’s Agencies)

Dear Friends,

February-March 2015

Thanks to the generosity of many donors and funders, Jewish Family Services of WNC continues to provide assistance to individuals and families in critical need of a helping hand.

JFS assists clients confronted by serious life challenges, to increase their safety and well-being; supports older adults and their families to alleviate isolation or cope with the stresses of dementia; helps people who are unemployed or underemployed to improve their job skills; and guides students to resources for college funding. The JFS professional staff assists individuals to set goals, overcome obstacles, and improve their quality of life.

This year it is especially exciting to highlight JFS Mental Health Counseling Services. For those who are struggling with depression, grief, or other mental health or relationship issues, now there is a welcoming place in the Jewish community, staffed by experienced and licensed mental health professionals, for accessible, confidential, and affordable counseling services.

With your support Jewish Family Services of WNC will continue to assist people as the only Jewish social service agency in Western North Carolina! Throughout February and March we are asking you and all members of the community to become “Friends of JFS” for 2015. Please make your generous pledge or donation now.

***Every contribution to JFS supports programs and services that help people!***

Please go to this secure link to make your donation: <http://www.jfswnc.org/donations/>

Or mail your check to: JFSWNC, 2 Doctors Park Suite E, Asheville, NC 28801

*If you directed your 2015 WNC Jewish Federation pledge to JFS: We thank you!*

Sincerely,

Julian Biller, EdD, President  
Board of Directors

Alison B. Gilreath, MSW  
Executive Director

*To see photos and read about “JFS year in review” and JFS accomplishments in 2014 please go to [www.jfswnc.org](http://www.jfswnc.org) Note: you won’t see photos of many of the JFS clients who must remain anonymous to protect their privacy. Please know that they are all counting on your support!*

**JEWISH EDUCATIONAL LOAN FUND APPLICATIONS AVAILABLE MARCH 1<sup>ST</sup> TO APRIL 30<sup>TH</sup>**

The Jewish Educational Loan Fund (JELF) has applications available on line beginning March 1<sup>st</sup> to Jewish college students. Applications are for funding for the fall of 2015 through summer of 2016. **Deadline for this submission cycle is from March 1<sup>st</sup> through April 30<sup>th</sup>, 2015.**

JELF grants interest-free loans to Jewish students are "last dollar"- they supply the final funds that a student needs to attend school. These loans can be used for study at a college or university, graduate school or professional/vocational school that leads to a degree or certificate.

JFS programs are open to all regardless of faith, race, color, gender, sexual orientation, ethnicity, country of origin, age, ability.

Jewish Family Services of WNC, Inc. is a non-profit organization under section 501(c)(3) of the IRS code. Contributions are tax deductible to the extent allowed by law. Financial information about this organization and a copy of its license are available from the State Charitable Solicitation Licensing Branch at 919-807-2214. The license is not an endorsement by the State.

# ASHEVILLE



Join the **BROTHERHOOD FOR SUNDAY BRUNCH**

**MARCH 15<sup>th</sup> AT 10:00 AM**

The guest speaker will be *Honorable Esther Manheimer*, Mayor of the City of Asheville and a member of Congregation Beth HaTephila.

Mayor Manheimer will provide a presentation on the three newly designated Innovation Districts and their positive impacts. These districts, officially known Municipal Service Districts, include the River Arts District, Charlotte Street Corridor and the South Slope. The plan calls for capital improvements in each of these districts. Recommendations include the financing of these improvements through special obligation bonds, a first for the city and a way to avoid using taxpayer money or creating special tax districts.

Join us for this enlightening discussion regarding capital improvement projects for the city.

Breakfast will be served at 10:00 AM. The cost is \$8 per person or \$15 per couple. Space is limited, so please RSVP to *Joe Gates* 280-0087 or *Joel Mazelis* 658-4140.



