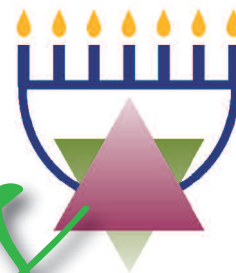


THE TEMPLE

FEBRUARY 2014 • ADAR 5774

A Monthly Newsletter of The Temple -Tifereth Israel
Cleveland and Beachwood, Ohio

times



JOIN US FOR OUR VISITING ARTIST MORDECHAI ROSENSTEIN

Wednesday, February 19 through Sunday, February 23

Mordechai Rosenstein, a truly gifted world-renowned Jewish artist, embellishes Hebrew and English letters, giving them a special rhythm and excitement to make them virtually dance across the page. Throughout his visit, Mordechai will be meeting with members of our congregation, such as Temple Women's Association, Brotherhood, Temple Family Connections, Chai Lifers, Religious School, as well as joining us for Shabbat.

Mordechai Rosenstein's art will be on display and available for sale during his visit. Items for sale are affordably priced so all may enjoy them in their homes.

Proceeds from sales will benefit The Temple Women's Association.



PLEASE REFER TO THE BROCHURE INSIDE THIS ISSUE FOR THE DATES AND TIMES OF SPECIFIC PROGRAMS.

WHAT HAPPENS AT THE TEMPLE... STAYS AT THE TEMPLE!

EAT, DRINK, AND DANCE THE NIGHT AWAY!



**SATURDAY, MARCH 15 AT 7:00 PM
THE TEMPLE, BEACHWOOD**

**RSVP TODAY - FIRST 25 PEOPLE WILL
RECEIVE EXTRA \$100 FUN MONEY!**

Lisa & Peter Vinocur and Lisa & Richard Immerman, Co-Chairs

This fabulous evening will feature delicious eats from Around Downtown Catering and music from the rock & roll band *Last Call*, casino games, silent auction, raffle, March Madness, wine pull and fabulous prizes!

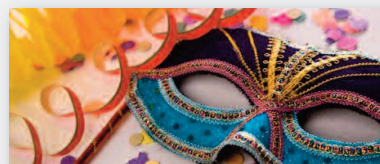
PLUS \$500 Fun Money!

All for \$80 per person!

Complimentary valet parking

Costume or Vegas Glam attire

Members and non-members welcome



IT'S NOT TOO LATE TO BE A SPONSOR!

Sponsorship levels starting at \$250

Contact Don Scherzer at dscherzer@ralaw.com

RSVP to Tiondra Hope at 216-831-3233

Tickets may also be purchased at www.ttti.org
(under "About" tab, go to "Donations online")

SHABBAT WORSHIP

KABBALAT SHABBAT SERVICES

ARE HELD AT 6:00 PM

Friday, February 7* / 7 Adar

Torah Portion: Tetzave
Exodus 27:20-30:10

Friday, February 14 / 14 Adar

Torah Portion: Ki Tisa
Exodus 30:11-34:35

Friday, February 21 / 21 Adar

Torah Portion: Vayakhel
Exodus 35:1-38:20

Friday, February 28 / 28 Adar

Torah Portion: Pekudei
Exodus 38:21-40:38

*If you are celebrating a birthday or anniversary this month please join us on this Shabbat to be called to the bima for a special blessing!



JOIN US FOR OUR MONTHLY SHABBAT DINNER TOGETHER

**Friday, February 7th following
the Kabbalat Shabbat Service**

Alexanders

5845 Landerbrook Drive

*In order to accommodate everyone attending,
we request reservations by February 4th
to Sandy Zieve at sandy.zieve@gmail.com
or call 216-381-1216.*



SHABBAT MORNING TORAH STUDY

WITH RABBI ROGER C. KLEIN

SATURDAY MORNINGS AT 9:15 AM

THE TEMPLE, BEACHWOOD

FEBRUARY 1, 8, 15 & 22

*Fresh bagels, coffee and tea
served at every session!*

ALL ARE WELCOME!

JOIN US FOR A SPECIAL SHABBAT DINNER AND THANK GOD IT'S SHABBAT SERVICE WITH VISITING ARTIST, MORDECHAI ROSENSTEIN

FRIDAY, FEBRUARY 21

THE TEMPLE, BEACHWOOD

Dinner 6:30 p.m. • Service 7:30 p.m.

Celebrate Shabbat with Mordechai at a catered Shabbat Dinner followed by services where Mordechai will share his *D'Var Torah*, "*The Art Within Shabbat & Torah*."

Dinner: \$10 adults / \$5 children RSVP Required to Tiondra at 216-831-3233.
Complimentary childcare will be available during the service.



Rock Your Soul following the Brotherhood Spaghetti Dinner!

FRIDAY, FEBRUARY 28 AT 7:30 PM

THE TEMPLE, BEACHWOOD

See page 8 for information about the Brotherhood Spaghetti Dinner.

MAZEL TOV TO OUR B'NAI MITZVAH

All are invited to attend the Shabbat Service as we welcome these B'nai Mitzvah.

JOLIE EITMAN

Saturday, February 1 at 11:00 a.m.
The Temple, Beachwood

Jolie is the daughter of Cheryl and Scott Eitman. She attends Beachwood Middle School. For her mitzvah project, Jolie is volunteering at Fieldstone Farm Therapeutic Riding Center, whose mission is to offer programs designed to foster personal growth and individual achievements for people with disabilities.



SOPHIE NEWMAN

Saturday, February 8 at 4:30 p.m.
The Temple, Beachwood

Sophie is the daughter of Tracey and Steve Newman. She is a student at Brady Middle School. Sophie is volunteering at Rescue Village Animal Shelter in Geauga and donating a portion of her monetary gifts to them for her mitzvah project.



BAR/BAT MITZVAH PREPARATION

Families are encouraged to make use of the bar/bat mitzvah resources available on The Temple website at www.ttti.org under "lifecycles" found under the "worship" tab.

Dear Friends,

The following is a reprint from my Huffington Post blog on December 23, 2013 that I wish to share with you in light of the extraordinary importance of the issue.

L'Shalom u'veracha – In Peace and Blessing,

Rabbi Richard A. Block



BDS: BIASED, DISHONEST, SELF-DEFEATING

Deciding to boycott Israeli academic institutions, the American Studies Association has aligned itself with the BDS movement, which calls for boycotts, disinvestment, and sanctions against Israel. The ASA resolution, approved by voters who received only pro-BDS materials and no opposing viewpoints, illustrates the moral and political bankruptcy of this approach to one of the world's most complex conflicts.

Biased

Most fair-minded people recognize that in any complicated dispute, responsibility for the situation and the capacity to solve it are shared among the parties. Not the BDS posse! The ASA's action is but the latest example of a pernicious bias that focuses obsessively on Israel's flaws - real, exaggerated, and imagined - while ignoring or attempting to justify the misdeeds, failures, mistakes and shortcomings of Israel's adversaries. This willful blindness, which singles out the Jewish State, and it alone, for condemnation and delegitimization, and holds that nation, and it alone, to standards that it fails or refuses to impose on others, is the newest form of the world's most enduring prejudice: anti-Semitism.

For a taste of the hypocrisy inherent in condemning Israel for alleged human rights violations and repressing academic freedom, consider some of the countries on which the ASA and the BDS movement exercise the right to remain silent: Zimbabwe, Iran, North Korea, China and Russia, where dissident teachers and students are targets of violence, the ruling regimes' ideological opponents are imprisoned or worse, elections are rigged, the media are state-controlled, homosexuality is banned, and the freedoms of speech, press, assembly, and religion are denied. The ASA continues the proud tradition of those who ignored the atrocities of Pol Pot and Idi Amin, totalitarianism in Burma, mass murder in the Congo, and genocide in Rwanda to focus their moral lasers exclusively on Israel.

Dishonest

BDS is a weapon in the arsenal of those who deny, explicitly or implicitly, the Jewish People's aspiration to statehood and the right of a Jewish state to exist, while asserting vehemently, and often violently, the Palestinian People's national rights. Non-state actors like Hamas, Hezbollah, Islamic Jihad and Al Qaeda, as well as Iran, the world's leading state sponsor of terrorism, are determined to use all means available, ranging from disinformation to nuclear weapons, to destroy the Jewish State and annihilate its citizens.

Even Peter Beinart, with whom I disagree fundamentally on so much that pertains to the Middle East, denounced the ASA's action. "BDS proponents note that the movement takes no position on whether there should be one state or two between the Jordan River and the Mediterranean Sea. But it clearly opposes the existence of a Jewish state within any borders...This is the fundamental problem: Not that the ASA is practicing double standards and not even that it's boycotting academics, but that it's denying the legitimacy of a democratic Jewish state, even alongside a Palestinian one."

Self-Defeating

Bias and dishonesty aside, BDS does nothing to advance Palestinians' national goals or improve their quality of life, either in the territories or within Israel. There is much to be learned from Mais Ali-Saleh, 27, the observant Moslem woman from a small Arab village near Nazareth, in Northern Israel, this year's medical school valedictorian at the Technion, often called "Israel's M.I.T.," who observed, "An academic boycott of Israel is a passive move, and it doesn't achieve any of its purported objectives." Sooner or later, Dr. Ali-Saleh pointed out, the boycott will impinge upon academic researchers she knows, both Jews and Arabs. Her clear message: Efforts like BDS are unproductive and misdirected. Those who truly seek to assist Palestinians and promote Middle East peace should invest their energies in supporting successes like hers and those of her husband, Nidal Mawasi, also a Technion-educated M.D., and on pressing Arab countries and the Palestinian authorities themselves to emulate Israel's academic freedoms and democracy.

Fortunately, many in the Arab world are far wiser and more sensible than their erstwhile supporters in the BDS crowd. The Allgemeiner reports that thousands of students from Arab countries have signed up for the Technion's first course taught in both Arabic and English. Even before officially opening, the nanoscience course has drawn more than 32,000 views from all over the world, including 5,595 from Egypt, 1,865 from Kuwait, 1,243 from Saudi Arabia, and 1,243 from Syria. The course will be taught by Professor Hossam Haick, a Nazareth native and a pioneer in innovative cancer detection, one of the many the ASA now boycotts.

Academics are often accused of inhabiting an "ivory tower," blissfully and cluelessly detached from the messy reality of the world. In aligning itself with BDS, biased, dishonest, and self-defeating, the ASA's shameful resolution substantiates that notion.

Follow Rabbi Richard A. Block on Twitter: www.twitter.com/rabbirab

CARING FOR CAREGIVERS



Wed., February 26 at 7:00 p.m.

The Temple, Beachwood

Experts will discuss:

Resources for caregivers • Being in the sandwich generation • Finding the delicate balance between caring for ourselves and others • Guilt • Walking the tightrope: respecting safety and independence • Working with siblings • The tough issues to talk about with loved ones

**REFRESHMENTS WILL BE SERVED
FREE AND OPEN TO ALL!**

**RSVP to Rabbi Haim's
office at 216-831-3233.**

BENEFIT CONCERT

Fairmount Temple

February 9 at 7:30 p.m.

A special musical evening is being planned by the Northeast Ohio community in support of Ethan Kadish, a young man in Cincinnati, who was severely injured by a lightning strike out of a blue sky while playing frisbee at summer camp, in Indiana June 2013.

The event is free to attend.

All donations are tax deductible and will support HelpHOPELive, part of the Great Lakes Catastrophic Injury Fund, a non-profit organization that is helping Ethan's family.

**To learn more about Ethan,
visit jointeamethan.org.**

Dear Fellow Congregants:

Many of you have asked questions about our TempleTomorrow Campaign. I hope that the explanations below will provide clarity about our goals and hopes for this unprecedented opportunity to secure our congregation's future.



As you know, two years ago the Temple's leadership developed a Vision. It states:

We are a warm, welcoming synagogue family where each person matters. We cherish our rich history and traditions and foster a dynamic culture of imagination and innovation. Members of all ages find meaning and inspiration by developing enduring personal connections with each other, Torah, God, the State of Israel, and the Jewish People, and through acts of justice and compassion.

All that we do here must be consistent with that Vision. Our decision to renovate and expand our Beachwood facility and to enhance our Endowment fund to ensure our future emanated from our Vision. Based on the generous and historic matching grant from The Jack, Joseph and Morton Mandel Foundation, we have launched a congregation-wide campaign to reach our goal.

What is the campaign goal?

While the Mandel Foundation has challenged our congregation to raise a matching \$16M - including \$12M for facilities and \$4M for endowments - we believe that we can aspire to a higher goal. As is common practice, we will set our fundraising goal based on matching the priorities of The Temple with the philanthropic willingness and capacity of our members and friends. This higher goal will allow us to accomplish even more on our wish list to transform our facilities and enrich and expand our programs.

What is the timetable for the campaign: solicitations and construction?

We began fundraising in the fall of 2013 with the goal of meeting the Mandel Challenge within 6-12 months. Fundraising often involves multiple conversations with thoughtful individuals and families and will continue throughout the construction process. We are asking our campaign committee to begin conversations with those who are willing to consider a pledge of support to the campaign. Centerbrook Architects are well into their effort to bring to life the ideas and aspirations of The Temple, and our Board of Trustees reviewed their recommendations in January 2014. Construction is expected to begin in spring 2015 and be completed by fall of 2016.

If the Temple Tomorrow campaign falls short of its goal, will members be assessed to make up any difference?

Absolutely not. While we are confident that we will raise more than the \$16 million needed to meet the Mandel Challenge, our construction plans will reflect only what we actually raise.

Is The Temple expecting everyone to participate in the Campaign?

It is our hope that every congregant will find a way to join this effort. It is an opportunity for each of us to create a legacy for today and tomorrow.

If you have other questions about the TempleTomorrow project, please contact our Development Director, Bev Gans at bgans@titi.org. We hope that when a Temple Tomorrow Campaign volunteer contacts you for a campaign conversation, you will take advantage of the opportunity to learn more about TempleTomorrow and consider the impact of your support on The Temple-Tifereth Israel. Remember: This is YOUR Temple.

Thank you for your continued support of our extraordinary congregation,

Jeanne Tobin, *President, Chair of TempleTomorrow*

Amy Kaplan, *Chair of TempleTomorrow Campaign*

Rabbi Richard A Block, *Senior Rabbi*

IMPORTANT RELIGIOUS SCHOOL DATES

Sunday, February 2	5th Grade Family Education Day (9:30 a.m.)
Sat., Feb. 15 - Wed., Feb. 19	No School President's Day
Saturday, February 22	Mordechai Rosenstein Artist in Residence (Shabbaton - 3:00 p.m.)
Sunday, February 23	1:00 - 5:00 Chai School Kallah #5
Friday, February 28	Spaghetti Dinner & Rock My Soul Shabbat (6:00 p.m.)

SHALOM FROM GANON GIL!

☺ It is cold and snowy outside but when you walk down the hallway of Ganon Gil you can feel the warmth and the excitement of learning, discovery and friendship! In the next few weeks we will begin to welcome Spring (and hopefully some warmer weather) by preparing our butterfly garden for its new season. The children will be digging in the soil with their hands and they will be responsible for watering and tending their plants. It is a joy to see the excitement on their faces as they measure and chart the growth of their plantings.

☺ In early December, Rabbi Schlein and I had the great honor of being presenters at the URJ Biennial in San Diego, California. The Biennial is the largest Jewish gathering in North America with over 6000 attendees from around the world. The title of our session was: More than Just Preschool! An Opportunity to Transform Parents of Young Children into Synagogue Leaders. We talked about the wonderful early childhood synergy that is occurring within The Temple and the incredible growth of Ganon Gil.

☺ I hope you will be able to join us for the second of our "Parenting in the Trenches" series - an evening with Amy Speidel on Thursday, February 6, 2014 at 7:30 pm. Amy Speidel is a Certified Coach; parents will be guided in looking at the child/parent relationship in a supportive and collaborative environment.

☺ Ganon Gil registration is now open for our Half Day (9:00 a.m - 1:00 p.m.) and our Full Day Programs (7:00 a.m. - 6:00 p.m. Monday - Thursday and 7:00 a.m. - 5:30 p.m. on Friday) for summer and for the 2014/15 school year. Please contact me if you are interested in scheduling a tour and visiting our amazing preschool.

— Lori Kowitz, Director of Early Childhood Education



Parenting in the Trenches

An Evening with Amy Speidel, CCDI

Thursday, February 6, 2014 • The Temple, Beachwood at 7:30 p.m.

With Certified Coach, Amy Speidel, parents are guided in looking at the child/parent relationship in a supportive and collaborative environment.

Amy worked in the field of Early Childhood for over 20 years as Teacher, Director, and Parent Educator. She earned the distinction of Teacher of the Year from the Cleveland Association for the Education of Young Children in May, 2000. Amy provides coaching to parents of children ranging in age from infancy to young adulthood. She is a certified coach through the Co-Active Coaches Training Institute. From a practical perspective, she has been a foster, birth, and an adoptive parent. Her passion is to support parents in the incredible journey of raising a child.

All are Welcome!



Amy Speidel, CCDI

OVERNIGHT CAMP SCHOLARSHIPS AVAILABLE



Did you know that there are two sources for grant and scholarship funds available for campers attending Jewish camps? The "One Happy Camper" program, managed by JECC, provides funding opportunities for first year, overnight campers who are attending a Jewish camp. Visit their website to learn more on how your camper may qualify for a \$1000 grant towards camp fees.



The Temple also has need-based scholarship funds available to assist with camp fees to Jewish camps.

Information and an application can be obtained by contacting Chris Fox at cfox@ttti.org.

The deadline for receipt of the application is February 15, 2014. Award notifications will be made by the end of February.



Give Blood - Save a Life!

**Sunday, February 9
9:00 a.m. to 1:00 p.m.
The Temple, Beachwood**

Please take 30 minutes to do this important mitzvah. If you make an appointment, you will not need to wait in line. Please contact Jenny Greenberg at jgreenberg@ttti.org.

WE'RE ROCKIN' THE KALLAH!

Shalom! I have some very exciting news for you! NFTY-NEL Winter Kallah is coming right here to The Temple. Our high school youth group (TEFTY) will be hosting about 150 Reform Jewish teens right here at our amazing synagogue!

February 28th - March 2nd teens from our NFTY region, spanning from Cleveland to Ottawa, Canada will participate in creative programming, services, Judaic education and social programs. These regional events are the highlights of the year for so many of our teens that we are thrilled to have the honor of hosting one! TEFTY has been working hard on this for months already. And YES! You can join in the fun.

Mark your calendars for Friday night February 28th. Its going to be amazing. Here's why: The Brotherhood will be hosting the NFTY teens for its annual Spaghetti Dinner and you should definitely join us for that. After dinner, come "Rock Your Teenage Soul" at a Rock My Soul Shabbat service that will be literally infused by teenage ruach. It will even include some very talented teen musicians.

There are so many awesome reasons to be a part of NFTY-NEL Winter Kallah and yes, we definitely could use some help as well! So, if you enjoy working with youth and having a blast doing it, please email me or call (jhausman@ttti.org or 216-455-1707). Come experience all the fun, excitement and ruach that our youth bring!

Thanks so much!

- Jon Hausman, Director of Experiential Education
and Jenny Greenberg, Youth Advisor



LIBRARY LINES BY ANDREA DAVIDSON

What's new at the Library? *Dancing with the Enemy*, by Paul Glaser, is the extraordinary story of the author's aunt, a Jewish dance instructor who was betrayed to the Nazis by the two men she loved. She managed to survive World War II by constantly using her ingenuity, including teaching dance to the SS at Auschwitz. Her epic life becomes "a window into the author's own past, and the key to discovering his Jewish roots" after having been raised as a Catholic.

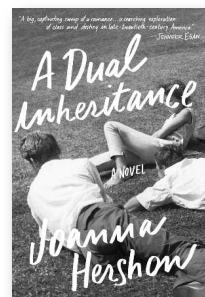
New DVD: *Nicky's Family* is the story of "Britain's Schindler," Sir Nicholas Winton, and the over 600 Jewish children he saved from Nazi-occupied Czechoslovakia with his own personal Kindertransport. The DVD shows how one act of kindness by one man, finding these children homes with English families, changed the world.

LITERARY CLUB - Meets 2nd Monday of every month
Monday, February 10 at 1:00 p.m.

Marcia Klein from the Beachwood Library will review:

***A Dual Inheritance* by Joanna Hershon**

An engrossing novel of friendship between two very different men, passion, betrayal, and class—and their reverberations across generations.



Bring your friends! The Temple will provide beverages and dessert.
Contact Andrea Davidson, Librarian at 216-455-1724 for information.

**HOURS: Monday 2:00 p.m. - 8:00 p.m. • Tuesday 9:00 a.m. - 3:30 p.m.
Wednesday 1:30 p.m. - 5:30 p.m. • Sunday 9:00 a.m. - 12:30 p.m.**

Slips for checking out materials are available when the librarian is not in.

THE STORY OF OUR CZECH MEMORIAL TORAH SCROLLS



By Sue Koletsky, Museum Director

The Torah Scroll we read from at the Friday Kabbalat Shabbat service has an unusual provenance. This scroll originally belonged to a congregation in the Czech town of Kolin, one of the most important Jewish communities in pre-Holocaust Bohemia. Located in the Ark in the Hartzmark Room, it is one of three Memorial Scrolls lovingly housed at The Temple.



The Memorial Scrolls have a fascinating story. During World War II, the Nazis collected Torah Scrolls, ceremonial objects, books, pictures, and embroidered vestments from desolate synagogues in Bohemia and Moravia. They gathered these plundered objects in Prague where they were slated to become artifacts in a museum depicting a vanished people. For years following the war, hundreds of Torah Scrolls lay piled in disuse in the Michle Synagogue, now part of the Jewish Museum in Prague.

In 1963, with the help of the Czechoslovak Government and a London art connoisseur, businessman and philanthropist Ralph Yablon acquired 1,564 Scrolls which were meticulously packed and sent to England. In 1964, London's Westminster Synagogue was selected as trustee and a Memorial Scrolls Committee was established to distribute the Scrolls "on permanent loan" to congregations throughout the world.

After the scrolls were unpacked and numbered, they were inspected and classified into five grades, from the best to unusable. The best could be read from and those deemed unusable would serve as sacred memorials. During 1965 several Scribes repaired the Scrolls and, to the extent possible, identified their origins.

The Temple has three Czech Memorial scrolls, which Rabbi Daniel Jeremy Silver was instrumental in obtaining. In addition to the one from Kolin, Scroll #843 is located in the Ark in the Sanctuary at University Circle. It was written in 1900 and is from the town of Trebic. Scroll #42, housed in the Ark in the Beachwood Sanctuary, is an "orphan," its town of origin unknown.

February 7 marks the 50th Anniversary of the arrival of the Memorial Scrolls at the Westminster Synagogue in London. A special celebration and service is planned in England and here The Temple Museum has created a special exhibit in the Hartzmark Room Honoring the Holocaust: The Story of Our Czech Memorial Torah Scrolls.



PLEASE JOIN US FOR A SPECIAL MUSEUM PROGRAM WITH MORDECHAI ROSENSTEIN

*Sponsored by The Temple Museum of
Jewish Art, Religion & Culture*

**Thursday, February 20
7:00 p.m.**

Art Becomes Me

Mordechai will share a powerful slide show and stories about artwork created for families, organizations, synagogues and even celebrities.

Browse his selection of art while enjoying wine, cheese and desserts.

ALL ARE WELCOME!



AN EVENING WITH OUR VISITING ARTIST

**Wednesday, February 19
7:30 p.m.**

Teaching Values Through Art

An evening to socialize and learn about how art can enrich you and your child's life. Browse

Mordechai's beautiful collection and enjoy some delicious desserts.

**The program is free but RSVP's
required to Tiondra Hope
at 216-831-3233.**

ADULT LEARNING OPPORTUNITIES

JOIN RABBI ROGER C. KLEIN FOR THIS THREE PART SERIES ON *Religion and Violence*

Sundays, February 23, March 2 & 9 at 10:30 a.m. at The Temple, Beachwood

Many religions seem to have their brand of fanatics who claim both to know "the truth" and to have the right to impose it on others. True believers fight over such issues as: who owns the land, what the holy books really mean, whose prophets are reliable, the nature and role of the Messiah, and on and on. Why do the great monotheistic religions, including Judaism, sometimes give rise to hateful thoughts and violent actions? Is there some problem with monotheism itself? And how have these religions ... how, in particular, has Judaism ... acknowledged these tendencies and tried to moderate, deflect or eliminate them? In this series, we will explore the historical and ideological foundations of Judaism, take serious note of the Bible's frequent authorization of violence, often in the name of God, and examine the ways in which our tradition has sought to soften these tendencies.



PRE-CONCERT TALKS BY RABBI ROGER C. KLEIN AT SEVERANCE HALL

Thursday, February 6 and Saturday, February 8 at 7:00 p.m.

The program will feature Felix Mendelssohn's Fourth Symphony ("The Italian"), Mozart's Third Violin Concerto, and Edward Elgar's Enigma Variations.

IN THE SPOTLIGHT: JUDAISM AND THE THEATRE

Sundays, January 26, February 2 & 9 from 10:00 a.m. - Noon

Join a bevy of local theatre professionals, directors, and actors – including Jacqi Loewy, Jeff Grover, Faye Sholiton, Fred Sternfeld, and Brian Zoldessy for an engaging, thought-provoking, and entertaining look at the rich history of Jews, Judaism, and the theatre. As always, a breakfast of fresh fruit, yummy pastries, orange juice, and coffee will be served.

Jan. 26: Dive into the study and performance of scenes by American Jewish playwrights with Jacqi Loewy.

Feb. 2: Explore the past, present, and future of Cleveland Jewish theatre with Faye Sholiton and Fred Sternfeld.

Feb. 9: Spend a fun and engaging morning with local theatre professionals Jeff Grover and Brian Zoldessy.

RSVP TO RROSS@TTTI.ORG TO RESERVE YOUR SPACE. BRING A FRIEND!



BROTHERHOOD SPAGHETTI DINNER & ROCK MY SOUL SHABBAT!

Join our Temple family as we host the NFTY-NEL Winter Kallah and the Brotherhood welcomes 150 Jewish teens as their guests for this festive Shabbat dinner!

FRIDAY, FEBRUARY 28

Dinner - 6:30 p.m. • Rock My Soul Shabbat - 7:30 p.m. • Oneg to follow

Dinner cost: Adults \$10, Children \$5 (3 and under free).

For reservations, return slip below, call Tiondra at 216-831-3233 or e-mail thope@tti.org by February 25th.



BROTHERHOOD SPAGHETTI DINNER - FRIDAY, FEBRUARY 28

Checks payable to The Temple. Mail to: The Temple, 26000 Shaker Blvd., Beachwood, Ohio 44122, Attn: Tiondra Hope

Names Attending _____ Phone # _____

_____ Adults # _____ Children Total Enclosed \$ _____

JOIN THE CHAI LIFERS A VISIT TO THE CANTON MUSEUM OF ART FOR A TOUR OF TWO SPECIAL EXHIBITS

*Co-Sponsored by The Temple Museum of
Jewish Art, Religion & Culture and The Chai Lifers*



Canton Museum of Art

WEDNESDAY, FEBRUARY 12 FROM 12:45 - 5:30 PM

One exhibit, *"Illuminating the Word: The Saint John's Bible,"* will feature the first handwritten and illuminated Bible to be commissioned in more than 500 years. On view will be contemporary manuscript pages created using only medieval techniques and materials. A companion exhibit, *"Sacred Voices,"* is a collection of contemporary art created by Christian, Jewish and Muslim artists. One of the pieces included in this exhibit is a lovely piece from our museum collection – the Esther Megillah scroll by artist Siona Benjamin.

**We will depart for the Canton Museum of Art
from The Temple by coach at 12:45 p.m. and
return around 5:30 p.m. The coach will need to
leave on time, so please plan to arrive at 12:30 p.m.**

Admission and transportation: \$26 (Bus only* \$18)

**For attendees who have Cleveland Museum of Art membership at the
Ambassador level and above, cost will be transportation only. Eligible
CMA membership card must be presented upon admittance to the museum.*

**REGISTER BY FRIDAY, FEBRUARY 7 WITH TEAR SLIP OR CALL
WENDY AT 216-595-1930. ALL ARE WELCOME TO ATTEND!**

Questions? Call Wendy at (216) 595-1930 or Barbara Kuby at (440) 247-7737.

CANTON MUSEUM - FEBRUARY 12

**Please remit with payment to Wendy Dannenhirsh, payable to:
The Chai Lifers, 28100 South Woodland, Pepper Pike, Ohio 44124**

Names Attending _____

Address _____

Phone # _____ E-mail _____

Bus & Admission # _____ @ \$26 ea. Bus Only* # _____ @ \$18 Total \$ _____

(*with CMA reciprocity level membership card upon entry)

Total Enclosed \$ _____

Brotherhood Lunch Bunch with Visiting Artist Mordechai Rosenstein



**Wednesday, February 19
Noon**

The Temple, Beachwood

Mordechai will join the Brotherhood for lunch and discuss his journey as an artist. He will share examples of his art through the decades along with surprising stories of who owns some of his pieces.

**Walk-ins welcome but
reservations are encouraged!**

**Cost is \$10. Payment can
be made at the lunch.**

Please RSVP by February 14
to Tiondra at 216-831-3233.



DO A KNIT-ZVAH THIS YEAR!

We will need a full supply of scarves and hats to distribute to Citizens Academy and Buckeye Woodland this winter. Please give completed items to Cyndi Wilson in the rabbinic suite. Call Donnie Gross or Rita Saslaw for yarn and instructions.

**If you are interested contact
Donnie Gross at 440-473-1888,
donnieF144@gmail.com or
Rita Saslaw at 216-464-8563,
rlsaslaw@aol.com.**



THE TEMPLE IS PROUD TO
BE A SPONSOR OF THE GAY
GAMES 2014 WHICH WILL
TAKE PLACE IN CLEVELAND
AUGUST 9 - 16, 2014.

If you are interested in
finding out how you can
volunteer for the Gay
Games in August, please
contact Rabbi Haim.

It's Time to Play MAHJ!



We will meet Tuesdays,
February 4, 11, 18 & 25
4:00 p.m. at The Temple

You do not have to be an experienced
mahj player - Naida Levi, mahj
instructor, will be available to assist!

This is a wonderful opportunity
for Temple members to learn and
play the game of Mah Jongg.

*Please bring a mahj set and
rules if you have them.*

**For questions, contact Naida
at naidajoy@yahoo.com**



HOSPITAL VISITS

Due to privacy laws, The Temple
no longer receives patient notification
from hospitals. Our rabbis and cantor
make weekly visitations to area hospi-
tals to see members of our congrega-
tion but it is necessary that you notify
the rabbinic suite at 216-831-3233, ext.
114, when a member of your family is
hospitalized. Your cooperation in this
matter is greatly appreciated.

ANNUAL TWA RETREAT *The Rhythm of The Hebrew Alphabet* with Mordechai Rosenstein

*Internationally acclaimed Jewish
artist and calligrapher*

The Temple Women's Association
looks forward to welcoming you to a
day designed to celebrate creativity
and spirituality with our visiting
Jewish artist.

Saturday, February 22, 2014
9:30 a.m. - 3:00 p.m.
Evans Atrium
The Temple, Beachwood



Culinary! – Begin the morning with bagels and a selection of Lee's
Cream Cheese created by Rachel and Sarah Gross (twin daughters of
Hallie and Dan Gross) and made with farm fresh Snowville milk from
an Ohio creamery near Columbus.

Judaica! Please bring a precious object or share a personal story which
connects you to your faith.

Art! The Temple's visiting artist Mordechai Rosenstein, internationally
acclaimed Judaic artist and calligrapher, will engage us in a hands on project
in celebration of the meaning of sisterhood.

Poetry! A Sestina is a form of poetry that is several centuries old and is
based on a collection of words and images. TWA board member Nuala
Archer, former professor at Yale, Oklahoma State and Cleveland State
Universities, will introduce us to a Sestina by Elizabeth Bishop and guide
us in writing a group Sestina.

Havdalah! Rabbi Rosie will lead us in the ceremony which formally ends
Shabbat, giving us an opportunity to express gratitude for the sacredness of
our Sisterhood retreat.

Mediterranean Lunch catered by Around Downtown Catering
Tasty deserts baked by the TWA committee

Cost: \$25.00 TWA Members / \$35 Non TWA Members

*Everyone is invited to browse a selection of original Rosenstein signed
serigraphs, giclee prints, and tapestries, which will be available for
purchase in the Noll Social Hall all day.*

For more information please contact
Leslye Arian at 216.991.1860 or
email leslye.arian@gmail.com.



THE TEMPLE WOMEN'S ASSOCIATION

TWA RETREAT - SATURDAY, FEBRUARY 22

**Remit with payment by February 17 to Lindsay Guzowski,
2222 Detroit Ave. #911, Cleveland, OH 44113. Checks payable to TWA.**

Names Attending _____

E-mail _____ Phone # _____

TWA Members _____ # Non Members _____ Total Enclosed \$ _____

IN MEMORIAM

The Temple expresses heartfelt sympathy to members of the bereaved families. May their memory be for a blessing.

GAIL ABRAMS

Mother of Debbie (Richard) Friedman;
Grandmother of Mason, Austin and
Devon Friedman

MILDRED H. BERNE

Mother of John (Sarah Gabinet) Siegel;
Grandmother of Nathan A. Siegel

GERALDINE G. BABIN

Wife of Joseph Babin; Mother of
Lawrence Babin, Emily (Steven)
Bellock; Grandmother to Lisa Babin,
Jamie Babin; Great Grandmother
of Brynn

LORETTA R. CHMIEL

Mother of Darlene (Robert) Duvin

JEAN B. DANZINGER

Wife of Marvin Danziger; Mother of
Howard Danziger (Sandra), Robert
Danziger (Peggy), Pamela Dittoe
(Thomas); Grandmother of
Benjamin (Brigid) and Michael
Danziger, Patrick, Jamie and Jacob
Dittoe; Great Grandmother of Megan
Danziger; Sister of Joseph Braverman
(Rita), Allen Braverman (Marianne);
Aunt of Bonnie Chizek (Larry)

SANDRA F. DEUTSCH

Mother of Penny Deutsch, Debby
(Stephen) Fohlen, Sherry Deutsch;
Grandmother of Adam (Andrea
Sterling) Fohlen, Brian, Doug and
Lindsey Fohlen

JEROME FINE

Father of Jeff (Sandie) Fine, Michael
(Claire) Fine, Karen (Michael)
Weinberger; Grandfather of Chad
(Andrea) Fine, Jason (Genelle) Denzin,
Brandon (Edyta) Halprin, Evan
(Brandy) Halprin, Troy, Kasey, Darcy
and Daniel Fine, Erin (Rabbi Matthew)
Cohen; Brother of Irving (Gloria) Fine

ANNA FRANCOVIC

Mother of Linda (Brad) Demsey

ARTHUR GENSOR, DDS

Brother of Gladys Cavell

ETHEL CEIL HELLER

Mother of Carol Oppenheimer,
Gloria Heller

DIANA LEE (GREEN) KING

Mother of Hilary (Eric) Marks;
Grandmother of Miles and Morgan

ALVIN LEISER

Father of Maurice (Meg) Leiser

SOFYA LINETSKY

Mother of Yuri (Kimberly) Linetsky;
Grandmother of Gabriella and Isabel

MORRIS MECLOVSKY

Grandfather of Jamie (Stephanie) Lader

DANIEL ERIC SCHWARTZ

Husband of Cathe Schwartz; Father
of Benjamin, Nathaniel and Alana
Schwartz; Son of Jack Schwartz;
Brother of Ruthie (Doug) Mayers;
Uncle of Debra (Jason) Hollander

LEON R. SHEPARD

Brother of Marilyn Strauss; Uncle of
Elizabeth and Joe Scheer; Great Uncle
of Emma and John Scheer

PEARL B. SHERIDAN

Mother of Ben (Laura) Sheridan;
Grandmother of Jacob, Max, Nate
& Danny

WILLIAM M. WARREN

Husband of Carole; Father of Daniel
(Sindy) Warren, Pamela (Curtis
Bartone) Warren, Beth (Richard
Abrams) Warren, Ted (Sandy Bellin)
Warren, Abigail Warren; Grandfather
of Ezra (Danielle), Amanda and Olivia
Warren Isabel, Joseph and Gabrielle
Abrams Max, Sophia and Juliet
Warren; Great-Grandfather of
Dante and Penelope

*Please Note: If the deceased was not a temple
member, only family members belonging to
The Temple-Tifereth Israel are listed here.*



THANK YOU TO OUR FEBRUARY ONEG SPONSORS

FEBRUARY 7

The Temple Brotherhood
Celebration Shabbat

FEBRUARY 14

Joe Newman
*In loving memory of
Nancy Kramer Newman*

FEBRUARY 21

The Strauss & Sukenik Families
*In loving memory of
Kathryn G. and Edwin A. Strauss*

*You may wish to sponsor an Oneg
in honor of, or in memory of a
loved one, special occasion, or just
to support The Temple. Contact
Tiondra Hope at 216-831-3233,
for more information
or to schedule a date in 2014.*



THANK YOU TO OUR FEBRUARY TEMPLE GREETERS



Feb. 7 - Brotherhood

Feb. 14 - Carol & Ken Hochman

Feb. 21 - Sheryl Hirsh

Feb. 28 - Jeannie & Jordan Tobin

BECOME A TEMPLE GREETER

Join the dozens of Temple members
who have already become part of
this successful member initiative.
Every Friday evening, just prior to our
6:00 p.m. Kabbalat Shabbat Service,
a Temple Greeter can be found at
the front door of our building with
a warm smile welcoming members
and guests to our building.

*If you are interested in being a
Temple Greeter please contact
Margie Newman by e-mail
at MargNewman@aol.com.*

BIMAH FLOWER FUND FEBRUARY

THE BEAUTIFUL FLOWERS THAT GRACE THE BIMAH ON SHABBAT ARE MADE POSSIBLE THROUGH DONATIONS BY THE FOLLOWING:

In loving memory of Arthur C. and Rema B. Hoffman by their son, James A. Hoffman and family

In loving memory of Max Kimmelman by his wife, Ruth Kimmelman and children, Alice and Tom James and Laura and Howard Kronick

In loving memory of Nathan Klausner by his daughter Beatrice Gray

In loving memory of Mildred Lieberman by her children, Karen and Alan Krause and her grandchildren

In loving memory of William M. Neye by his children, Ellen and Stuart Neye and Rita and Burton Lifson

In loving memory of Nancy Kramer Newman, by her husband, Joe, and children Pamela, Douglas, Cindi, and step-children, Deborah, David, Mark, and grandchildren Michael, Sophia, Sabra, Alex, Ariel, Katie, Gabriel, Molly, Zachary and Elijah

In loving memory of Edith R. Kyman and Benjamin S. Hochman by their children, Carol and Kenneth Hochman

In loving memory of Saul S. Biskind by his wife, Rosalind, children, Daniel and Sandie Biskind, Eve and Ken Kloth, Edward and Janine Biskind and grandchildren

In loving memory of Sam G. Pickus and Mildred Levy Pickus on their birthdays, by Nancy Pickus, Miriam, Peter and Matthew

In loving memory of Kathryn G. Strauss by her children, Virginia S. Sukenik, Edwin, Jr. and Jill Strauss, grandchildren and great-grandchildren

In loving memory of Eileen Beth Singer by Mr. and Mrs. Edwin Z. Singer

In loving memory of Dr. Irving S. Lieberman by his wife Caroyne and family

CONTRIBUTIONS

Gifts are a wonderful way to celebrate a birthday, an anniversary, the arrival of a child - or to remember the life of someone who has passed away. Your donations to these Temple funds are greatly appreciated.

THE TEMPLE - TRIBUTE FUNDS

Rabbi Richard A. Block Tribute Fund

In memory of Barbara Edelman by Lynn & Paul Millet
In memory of Lev Shwartzstein by Lynn & Paul Millet.
In memory of Louise Saffran by Lynn & Paul Millet
In honor of the guidance of Rabbi Block & Prof. Lee Shulman by Leo Fuchs
In honor of Rabbi Richard Block by Ida Post
In honor of the marriage of Jenna Walsh & Will Bastian by Carol & Dr. Michael Weiss

The Larry and Deedra Dolin Library Fund

In memory of Dan Schwartz by Deedra Dolin
In memory of Nader Malek's father by Deedra Dolin
In memory of Molly Levin by Ginny Sukenik

Ganon Gil Preschool Fund

In memory of Malcolm Zucker by Lynn & Paul Millet
In memory of Uncle Andy Robinton on his yahrzeit by Carey & Richard Joseph
In honor of Randi & Michael Sussman by Gloria Grischkan

Terry Goulder Memorial Fund

In memory of Terry Goulder by Steve Goulder

Jonathan Lee Gross Memorial Museum Fund

In memory of Don'te Spencer by Rachel, Sarah, Hallie & Dan Gross
In memory of Helen Tucker by Addie Kirschenbaum
In memory of Jerry Spevack by Addie Kirschenbaum
In memory of George Singer by Anne R. Spunt
In honor of Dan Gross's birthday by Mr. & Mrs. Zach Bruell, Susan & Dr. Steven Cole, Diana Gross, Rochelle & Daniel Hecht, Addie Kirschenbaum, Jan Alberts & David Kirschenbaum, Janet & Dan Kirschenbaum, Bonnie & Andy Neidus.

Rabbi Rosette Barron Haim Tribute Fund

In honor and appreciation of Rabbi Rosie Haim by Sharon & Richard Berger, Naida & Ronald Levi, Ida Post, Naomi & Ed Singer, Jackie & Rich Weiner.

Rabbi Roger C. Klein Tribute Fund

In memory of Lev Shwartzstein by Svetlana & Alexander Klayman, Bella Shwartzstein.
In memory of Dorothy Solowey Shanfeld by Joe Shanfeld
In memory of David Lewis by Lesley & Jay Trattner
In memory of Bill Warren by Lee Warshawsky

In honor and appreciation of Rabbi Roger Klein by Rich, Faith & Steve Brown, Anne Frankel, Ida Post.

In honor of Marty Arsham's milestone birthday by Doris H. Cramer

Howard A Levy Memorial Fund

In memory of Howard Levy on his birthday by Nancy Levy

Ellen and Milton Licker Memorial Fund

In memory of Maurice Terkel by Alice Licker
In memory of Norman Diamond by Alice Licker & Ted Hetman, Dee Ann Milne & Rob Milne
In memory of Peter B. Lewis by Alice Licker & Dee Ann Milne
In memory of Dan Schwartz by Alice Licker

Claire F. & Stanley W. Morgenstern Music Fund

In memory of Lev Shwartzstein by Patti & Hadley Morgenstern-Clarren

Outreach Fund

Jeff Grover

James, Bobbi, and Betsy Reich Memorial Fund

In memory of Mildred Berne by Amy & Ira Kaplan
In memory of Betsy Jo Reich on her yahrzeit by Carol & Michael Scheffler

Rabbi Stacy Schlein Tribute Fund

In honor of Ben Corbin becoming a Bar Mitzvah by Stacy & Todd Corbin

Michael & Ronald Schumann Yom Hashoah Candle Fund

In memory of Bill Warren by Elaine & Roman Frayman
In memory of Dan Schwartz by Elaine & Roman Frayman
In memory of Molly Levin by Elaine & Roman Frayman

The Schwartz Family Fund

The following contributions were made in memory of Dan Schwartz:
Linda & Paul Angart, Leslye & Keith Arian, Marilyn Bedol, Ruth Berger, Anne L. Berk, Connie Berland, Myrna & Kurt Bloch, Tamar & Jeremy Brecher, Mrs. Jean Brown, Barb Cantrall, Lynn Chaifetz, Kenneth Cohen, Amy & Jake Coppel, Brad Coppel, Ruth & Steve Coppel, Jackie Crandall, Joann & Nate Dardick, Andrea & Dr. Chad Deal, Mr. & Mrs. Howard Drechsler, Emily & Howard Edelstein, George & Claudia Folkman-Mathiwitz, Marsha Frauenthal, Lois Friedman, Nancy & Harold Friedman, Carolyn & Dr. Edward

Gabelman. Mona & Jerry Gabry. Yuri & Don Gilbertson. Deborah & Joel Glass. Amy Graham. Joan & Robert Green. Kathleen & Jim Gutman. Sara & David Harris. Cookie & Alan Hartman. Meredith & Jason Hillman. Betty Holdstein. Eva & Jack Horwitz. Lois & Howard Israel. Betty J. Jaskulek. Susan & Ronald Kahn. Debbie & Steve Kalette. Ilene & Gary Kammer. Amy & Ira Kaplan. Marilyn & Dr. Howard Karfeld. David & Deanna Katz. Marjorie Kempner. Susan & Jim Kendis. Ruth Kimmelman. Terri & Stuart Kline. Howard & Laura Kronick. Dana & Paul Lefkowitz. Ellen & Earl Leiken. Cissy & Bob Lenobel. Selma Levi. Paul F. Levin. Phyllis E. Levine. Nancy Levy & Dr. Gerald Yosowitz. Joann K. Levy. Nancy & Keith Libman. Myra & Mark Lipton. Larry Mack. Netty Markell. Rochelle & Joel Marx. Virginia McCormac. Kelly McLaughlin. Alice Meckler. Barry & Susan Miller. Lynn & Paul Millet. Bonnie Minkovitz. Kathy Mulcahy. Sharon & Tom Munson. Jancie & Albert Nalibotsky. Kathy & Terry Ozan. Carole & Bernie Rabinowitz. Robb Ristau. Hilma Robinson. Roz & Harvey Rosenbaum. Enid & Dr. David Rosenberg. Mary & Murray Rosenberg. Berkowitz. Mary Ann & Daniel Rothstein. Joan & Marc Rubinstein. Ilene & David Saginor. Cynthia Saks. Linda & Bob Sanders. Toni & Don Scherzer. Florence Schreibman. Ricki Schwartz. Doris Shyatt. Toby & Jay Siegel. Marsha & Jim Spitz. Miriam Stiel. Laurie & Dr. Richard Stein. Gail & David Stein. Terri & Howard Steindler. Michelle & Len Stern. Susie & Gerald Strom. Ginny Sukenik. TWA. Sharon & Andrew Tievsky. Martha Tripi. Barbara Urbanski. Dolores Urdang. Suzanne & Bill Utley. Joyce & Eric Wald. Ruth, Jon, Dani & Emma Wallace. June Wallace. Herbert Weinberg. Helene Weinberger. Diane & Alan Weiner. Debbie & Phillip Weiss. Nancy Whitman. Darcy & Joseph Williams. Sandy Zieve.

Cantor Kathryn Wolfe Sebo Tribute Fund

In memory of Becky Wolfe by Rachel, Sarah, Hallie & Dan Gross
In memory of Dr. Stephen Ockner by Paula Ockner
In memory of Marcia Yasinow by Ida Post
In memory of Dorothy Kohn on her yahrzeit by Carol Spero
In honor of Ben Corbin becoming a Bar Mitzvah by Stacy & Todd Corbin
In honor and appreciation of Cantor Sebo by Ida Post. Drs. Miriam & Daniel Weiss

The Gail Shields Memorial Staff Assistance Fund

Gloria Grischkan. Ann Hudec.

TGIS Fund

In honor of Rob Ross & the TGIS Team by Lisa & Pat Martel

The Temple Arts Program Fund

In memory of Aileen Arnson by Joy & Tony Anzalone
In memory of Lev Shwartstein by Cookie & Alan Hartman
In memory of Morris Meclovsky by Joann K. Levy
In honor of Esther Saginor by Cheri Ellowitz

The Temple General Fund

In memory of Lev Shwartstein by Mildred Borovitz. Greta M. Budin.
In memory of Aileen Arnson by Ellen Bresky. David Cohen.
In memory of Barbara Edelman by Winnie & Jerry Chatman. Linda & Brad Demsey. Cathy & Larry Goldberg. Sarajane & Gerald Goldstein. Cookie & George Morris. Maria Koutroumanis & Marc Pelletier. Elizabeth Roeder. Jan & Bill Stern. Susan & Anthoni Visconsi.
In memory of Bill Warren by Rita & Burt Frankel. Maude & Dr. Mel Shafron.
In memory of Victoria Kendal by Paul Hill
In memory of Esther Gimp by Ruth Katz. Zelda Segal.
In memory of Herschel Koblenz by Cookie & George Morris
In memory of Wilton Sogg by Cookie & George Morris
In memory of Marilyn Swirsky by Barbara & Allan Peskin

The Temple-Tifereth Israel GLBT Outreach Fund

In memory of Leonard Benson by Michael Folkman

Temple Hunger and Social Justice Fund

In memory of Lev Shwartstein by Joan Klein
In memory of Rosalyn Frank by Harriet & Herbert Levine
In memory of Molly Levin by Joann K. Levy
In memory of Alice Lissauer on her yahrzeit by Chuck Lissauer
In memory of Esther Gimp by Ruth Schaul
In memory of Chris Brown by Toby & Jay Siegel
In memory of Bill Warren by Toby & Jay Siegel
In memory of Pauline Jacobson by Toby & Jay Siegel
In memory of Leonard Benson by Valerie Weitz
In honor of Jim Lieberman's milestone birthday by Shelley & Mark Schloss. Valerie Weitz.
In honor of Mel Chavinson's birthday by Ilene & Allan Miller
In honor of Nancy Jacobs by Ginny & Bob Wolff
In recognition of The Temple by Nancy & Harold Friedman

The Wald Family Garden Fund

In memory of Lev Shwartstein by Joyce & Eric Wald
In honor of Liza Coven's birthday by Joyce & Eric Wald
In honor of the birth of Ryan Cooper Glick by Faith & Sheldon Schaffer

THE TEMPLE FOUNDATION - ENDOWMENT FUNDS

Robert B. Dery Memorial Endowment Fund

In memory of Joan Roth Krohn by Linda & Ken Dery
In honor of Carol & Marc Pohl by Linda & Ken Dery

Dorothy Garfunkel Baker Fine Arts Fund

In memory of Leonard Benson by Marilyn & Steve Garfunkel
In memory of Peter B. Lewis by Marilyn & Steve Garfunkel

Peggy & John Garson Shabbaton Enrichment Fund

In memory of Peter B. Lewis by Peggy & John Garson

Lee & Dolores Hartzmark Library

In memory of Peter B. Lewis by Dee & Lee Hartzmark

The Hochman Family Fund

In honor of Carol & Ken Hochman by Lisa Hochman

Sheldon, Betty & William Katz Lecture Fund

In memory of Peter Napoli by Betty Katz

Sidney M. & Harriet A. Polk Worship & Music Fund

In memory of Jerry Spevack by Nancy & David Polk & Family
In memory of Herbert Polk by Nancy & David Polk & Family

Silver Fund in memory of Rabbi Abba Hillel & Virginia Silver and Rabbi Daniel Jeremy Silver

In memory of Albert "Pete" Pickus on his yahrzeit by Nancy S. Pickus, Miriam, Peter, Matthew & Families
In memory of Lottie May Randall by Nancy & Benjamin Randall
In memory of John Fisher Zeidman by Adele Silver
In honor of Babette & Maury Young's milestone birthdays by Joan Adler

The Naomi G. and Edwin Z. Singer Endowment Fund

In honor of Ed & Naomi Singer in celebration of Chanukah by Geri & Harry Singer
Naomi & Ed Singer

Lindsay E. Stark Memorial Social Action Endowment Fund

In memory of Edith Ordman by Faith & Sheldon Schaffer
In honor of the birth of Olivia Ryan Rosenberg by Faith & Sheldon Schaffer
In honor of the birth of Ryan Cooper Glick by Faith & Sheldon Schaffer
In honor of the birth of Kylin Mackenzie by Faith & Sheldon Schaffer

Florence & Emanuel Stern Rabbinic Education Fund

In honor and appreciation of Rabbi Roger Klein by Eileen S. Kollins

Ruth & Jules Vinney Special Music Fund

In honor of Margo Vinney's milestone birthday by Joyce & Eric Wald

Nancy & Marvin Whitman Museum Endowment Fund

In memory of Bill Warren by Nancy Whitman

Donations as of December 31, 2013

Tom Schaefer
PLUMBING
TRUSTED. FAIR. RELIABLE SERVICE.
216-731-6606

Medical Alert Systems
Help for your loved one is just
a "press of a button away"
SafeCare USA
Jeff Tepper
216-581-7700

Invest In Israel's Future.
Invest In Israel Bonds.



Development Corporation for Israel
ISRAEL BONDS

Member: FDIC, NYSE

23240 Chagrin Blvd. #810
Beachwood, Ohio 44122
(216) 454-0180 • (800) 752-5667 • Fax: (216) 454-0186
cleveland@israelbonds.com

ADS CAUTION!
AT WORK

Call LPI at
1-800-477-4574
to Discover How to Put
This Space to Work for
Your Business!

THIS SPACE IS AVAILABLE

TIME TO ADVERTISE?

If you feel your
business needs a
little more attention,
give LPI a call at...
1-800-477-4574

Law Offices of Mark L. Hoffman 216-991-6200

Estate Planning & Administration • Business & Transaction Services
20133 Farnsleigh Road, Shaker Heights, Ohio 44122 www.markhoffmanlaw.com

Make Smart Decisions
Be More Comfortable
Save Some Money

GreenStreet Solutions

1-800-477-2010 • www.GreenStreetHome.us



THIS SPACE IS AVAILABLE

Call LPI at
1.800.477.4574
for more
information.



JFSA Care at Home: A Lot More Than Home Care.

A complete range of services to the Jewish community that enable
people to remain independent and safe in their own home:

- Nursing, Therapy (Physical, Occupational, Speech)
- Medical Social Worker
- Home Health Aide, Companionship, Transportation
- Kosher Home Delivered Meals
- Alzheimer's Care
- Personalized Home Management
- JFSA Lifeline Emergency Response System
- Individual and Family Counseling
- Home Making and Deep Cleaning
- Geriatric Care Coordination
- Sleep-Over Services
- Holocaust Survivor Support Services

Medicare/Medicaid/Private, Long Term Care Insurance, Veteran's Administration accepted.

JFSA Care at HOME

Accessible 24/7

216.378.8660

www.jfsacareathome.org

A program of Jewish Family Service Association



Montefiore Homecare

We Put the Home in Care.

216.910.2487

Physical, Occupational & Speech Therapy
Skilled Nursing Services
Medicare/Medicaid certified
JCAHO accredited

THIS SPACE IS AVAILABLE

ROUND TOWN TRANSPORTATION
Driven by Employment
Become a Volunteer Driver
or Request a Speaker!
Call Joan TODAY at
(216) 591-0300 or (440) 476-1494
or joan.hamm@vsu-oh.com

33 YEARS OF EXPERIENCE

When it comes to
buying or selling
your home
only the best will do.

EXPERIENCE A HIGHER STANDARD IN REAL ESTATE

Joan R. Garfield
CRB, CRS, GRI,
Broker/Owner

RE/MAX Traditions
216-409-9966
joanr.garfield@remax.net

Garfieldgroup-homes.com

Five minutes
could mean
\$50 for you!

SeekAndFind.com/contest

STOP! If you live alone,
you NEED LIFEWATCH!

Simply press your emergency pendant or wristband, and speak "LIFEWATCH" into our network (LPI) enabled car phone, 24/7.

\$1995 Limited Time Offer!
FOR FIRST 3 MONTHS*

*After introductory offer expires, \$24.95/month will be billed quarterly.

LIFEWATCH USA
PERSONAL, Caring Service Since 1980

www.lifewatch-usa.com
You're never alone with Lifewatch!
800.998.5601

TIME TO ADVERTISE?

If you feel your
business needs a
little more attention,
give LPI a call at...
1-800-477-4574

Invitation For All the
Celebrations
In Your Life...

La Place • 216-292-8414
invitation-media.com • www.invitation-media.com
Please call for appointment

Solon Granite Memorial Works, Inc.
MONUMENTS • MARKERS
BRONZE MEMORIALS
FOR ALL JEWISH CREMATED REMAINS
We Make Home Calls • Phone 440-248-8666
1-800-638-3432 • Fax: 440-248-2218
30650 Aurora Rd. • Solon, OH 44139
Cynank Family

THIS SPACE IS AVAILABLE

Offering special group rates
for your guests - call today!

Cleveland Beachwood • 3750 Orange Place
Beachwood, OH 44122
(216) 831-3300
www.larchmontelodgebeachwood.com

MJM LANDSCAPE DESIGN AND CONSTRUCTION

Patios • Decks • Fences
Trees • Shrubs • Perennials
No Job Too Big or Small

Since 1983
(216) 321-7729
Michael J. Madersky

LPI

Liturgical Publications Inc
Connecting Your Community™

For Advertising
Information Call
1-800-477-4574
or **216-325-6825**

FEBRUARY 2014

ADAR 5774

SUNDAY	MONDAY	TUESDAY	WEDNESDAY	THURSDAY	FRIDAY	SATURDAY
<div>SAVE THE DATE!</div> <div>Sunday, March 16 at 10:00 a.m.</div> <div>Rock My Megillah & Purim Carnival</div> <div>Volunteers Needed</div> <div>To volunteer contact Trista Onesti at tloods@yahoo.com</div> <div>DON'T MISS ALL THE FUN!</div> <div></div>				<div>All events and programs are held at The Temple, Beachwood unless noted.</div> <div>* Not at either Beachwood or University Circle</div>		<div>Torah Study 1 9:15 AM</div> <div>Shabbat Service 11:00 AM</div> <div>Shabbaton 3:00 PM</div>
<div>TRS 2 9:30 AM</div> <div>5th Gr. Family Ed. 9:30 AM</div> <div>SmART Sundays 10:00 AM</div>	<div>3</div> <div>TRS - 4:00 PM</div> <div>Chai School 6:30 PM</div>	<div>4</div> <div>Mahj- 4:00 PM</div>	<div>5</div> <div>TRS - 4:00 PM</div>	<div>6</div> <div>Photography Club 6:30 PM</div> <div>Parenting in the Trenches 7:30 PM</div>	<div>Tot Shabbat 7 10:00 AM</div> <div>Kabbalat Shabbat 6:00 PM</div>	<div>Torah Study 8 9:15 AM</div> <div>Shabbaton 3:00 PM</div> <div>Shabbat Service 430 PM</div>
<div>TRS 9 9:30 AM</div> <div>SmART Sundays 10:00 AM</div>	<div>10</div> <div>Literary Club 1:00 PM</div> <div>TRS - 4:00 PM</div> <div>Chai School 6:30 PM</div>	<div>11</div> <div>Mahj - 4:00 PM</div> <div>Temple Learning Council Meeting 7:00 PM</div> <div>TWA Board Mtg. 7:00 PM</div> <div>Temple Board Mtg. 7:00 PM</div>	<div>12</div> <div>TRS - 4:00 PM</div> <div>Purim Bash Committee Mtg. 7:00 PM</div>	<div>13</div>	<div>Tot Shabbat 14 10:00 AM</div> <div>Kabbalat Shabbat 6:00 PM</div>	<div>Torah Study 15 9:15 AM</div> <div>No Shabbaton</div>
<div>No TRS 16</div>	<div>17</div> <div>No TRS</div> <div>No Chai School</div> <div>PRESIDENT'S DAY Offices Closed</div>	<div>18</div> <div>Mahj- 4:00 PM</div>	<div>19</div> <div>Brotherhood Lunch Bunch NOON</div> <div>No TRS</div> <div>TFC Artist Prog. 7:30 PM</div>	<div>20</div> <div>Chai Lifers Artist Program 11:00 AM</div> <div>Museum Artist Program 7:00 PM</div> <div>Visiting Artist, Mordechai Rosenstein</div>	<div>Tot Shabbat 21 10:00 AM</div> <div>Kabbalat Shabbat 6:00 PM</div> <div>TGIS w/ artist Dinner - 6:30 PM Service - 7:30 PM</div>	<div>Torah Study 22 9:15 AM</div> <div>TWA Retreat w/visiting artist 9:30 AM</div> <div>Shabbaton Adult program w/visiting artist 3:30 PM</div>
<div>TRS 23 9:30 AM</div> <div>Adult Learning 10:30 AM</div> <div>Kallah 1:00 PM</div> <div>Visiting Artist</div>	<div>24</div> <div>TRS - 4:00 PM</div> <div>Chai School 6:30 PM</div>	<div>25</div> <div>Mahj- 4:00 PM</div>	<div>26</div> <div>TRS - 4:00 PM</div> <div>Caring for Caregivers 7:00 PM</div>	<div>27</div>	<div>Tot Shabbat 28 10:00 AM</div> <div>No 6 pm Kabbalat Shabbat</div> <div>Brotherhood Spaghetti Dinner 6:30 PM</div> <div>Rock My Soul Shabbat Service 7:30 PM</div>	



(ISSN 1089-229X)

Periodicals postage paid at Cleveland, OH

ISSUE 2 - PUBLISHED MONTHLY BY

The Temple-Tifereth Israel

26000 Shaker Boulevard

Beachwood, Ohio 44122-7199

216-831-3233 • www.ttti.org

Affiliated with the Union for Reform Judaism

Periodicals

Postage

PAID

Cleveland, Ohio

DATED MATERIAL

DO NOT DELAY

Richard A. Block, Senior Rabbi

Rosette Barron Haim, Rabbi

Roger C. Klein, Rabbi

Kathryn Wolfe Sebo, Cantor

Rabbi Stacy Schlein, Director of Education

Bob Allenick, Executive Director

Jeanne Tobin, President

Lori Kowit, Director of Early Childhood Education

Louis Innenberg, Finance Director

Chris Fox, Director of Operations

Allison Shippy, Member Services Director

Beverly Gans, Development Director

Susan Braham Koletsky, Museum Director

Rob Ross, Temple Arts Director

Jon Hausman, Director of Experiential Education

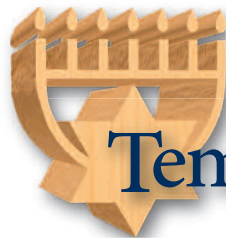
Andrea Davidson, Library Director

Debbie J. Friedman, Director of Communications

POSTMASTER - Send address changes to:



The Temple Times, 26000 Shaker Boulevard, Beachwood, Ohio 44122-7199



Temple Tomorrow

Building Our Future Today

The Future of Your Temple is Shaping Up!



CENTERBROOK



The plans and images are not final and are subject to further modification

December 8, 2013

**Learn more by clicking on the TempleTomorrow link from the www.ttti.org home page.
Spend some time in The Temple's lobby viewing the actual plans for our future building.
Send your comments and/or questions to TempleTomorrow@ttti.org.**

See page 4 to learn more about the Temple Tomorrow Campaign!