

# Temple Israel

COLUMBUS, OHIO  
JANUARY, 1995 VOL. 66, NO. 1

BULLETIN

## ARZA - AN ACT OF REDEMPTION



I am a member of Temple Israel.

I belong to the Sisterhood or Brotherhood or the Youth Group of Temple Israel.

I attend religious school or adult education or classes at Temple Israel.

I have followed five generations or I am the first in my family to be a part of Temple Israel.

I worship at Temple Israel, I learn, I study, I grow.

I am linked to a synagogue that is itself a link to Israel, the people, the nation, the land.

And yet for my complete identity as a Jew I need a way to more fully feel the impact of the ancient land on my children, my family, my life.

To come to Temple Israel here within is to enter into a place that spiritually mirrors the land of Israel that is out there. Our place called Israel here is where we come to find wholeness, connectedness, an acceptance of ourselves as Jews. Here we seek to redeem our moments from a secular culture that wants all of our time, energy, substance and will not be satisfied until we are fully absorbed. But we will not give in fully, for Jews have always known what many Reform Jews are just now realizing - a turning toward Israel that can result in sweet redemption. The land of Israel has redemptive power and ARZA. The Association of Reform Zionists of America, can bring the land of Israel to us even as we link ourselves ever more increasingly to it. By joining and supporting ARZA we not only help to redeem Israel for liberal Jews worldwide, we actually redeem ourselves as well. Redemption can be found in the land, its people, its myth, its mystery and its dreamlike image present in the mind and soul of every Jew.

Dream the land of Israel - what does your mind's eye see? - not internecine conflict, not political change and power plays, not struggle for religious expression although all this and more exists. What the dreamer sees in Israel is one humanity in partnership and then that people binding itself to the land which grows, nurtures, and is at peace. A place to be. To be what one chooses to be as human, as a whole being, as a Jew.

That dream exists, in the heart of every Zionist. ARZA is how we Reform Jews express our Zionism, our desire for an Israel at peace, for an Israel with equality for all identifying Jews, for an Israel that is itself a temple dedicated to the wholeness, the connectedness, the acceptance of every Jew. Israel is that sacred, redemptive place.

I am linked to a land, a nation, a people, a sacred place.

I study, I learn, I sing, I grow closer to Israel.

I have followed a hundred generations to the wellspring of our people's faith, history, and destiny.

I belong to the Women of Reform Judaism and to National Brotherhoods and NFTY.

I am a member of Temple Israel, a member of ARZA, a member of Israel.

ARZA needs your strength - even as you need the strength of ARZA in your Jewish life! Please consider a membership today.

Rabbi Bradley N. Bleefeld

## OUTREACH PROGRAM

SUNDAY, JANUARY 8, 1995

6:00 P.M. to 8:00 P.M.

**LIGHT SUPPER  
& DISCUSSION**

**INTERFAITH AND  
YOUR FAMILY:**

- **SKILLS & HOW TO'S •**
- **NEGOTIATIONS IN  
FAMILY SITUATIONS •**

This will be an opportunity to experience the actual learning and practice the skills to help negotiate interfaith issues within a family.

It is also an opportunity to meet other couples who are either married, engaged, or dating and are in interfaith relationships and to participate in informal discussions about situations that you feel have been very successfully resolved within your family.

The discussion will be led by Bonnie Parish of Jewish Family Services.

Please call Temple Israel at 866-9010 by Thursday, January 5, so Outreach will know how much food to prepare for the light supper. There is no charge for this program.

## ADULT ED SETS AMBITIOUS JANUARY SCHEDULE

As you can see on the enclosed Temple calendar, your Adult Education Committee has been very aggressive for those of our congregational family who are not Snow Birds. In addition to Dr. Wilson's appearance we've also got our regularly scheduled **MEAL & SPIEL** set for Saturday, January 14, at 9:30 A.M. in the Temple library.

If you've never attended one of these lively discussions, please mark your calendars! We're a fun, diverse group who often play "Stump the Rabbi" and have a good breakfast to boot! See you January 14.

Asher Moser,  
Adult Education Chairman

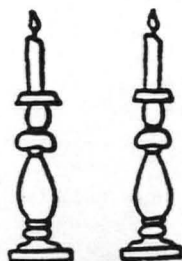
## SISTERHOOD TO FEED THE HOMELESS

Sisterhood will sponsor a dinner for homeless residents of the Open Shelter on Thursday, January 12, 1995. Help is needed to prepare food in the Temple kitchen that morning, and to transport and serve the meal that evening. If you are interested in preparing and/or serving, contact Karen Mozenter at 478-1706.

## SISTERHOOD GENERAL MEETING

Join Temple Israel Sisterhood for an evening of murder and mystery as you help solve *The Case of the Chinese Takeout*. Your honorable presence is requested Monday evening, January 23, 1995 at 6:30 P.M. The \$15.00 cover charge entitles you to one selection from Column A (a brief general meeting) and two selections from Column B (authentic Chinese fare and an evening of sleuthing).

Who dunit? Was it the Chinese chef? the chauffeur? YOU?! Send your reservation check made payable to Temple Israel Sisterhood A.S.A.P. to: Sandy Summer, 40 S., Merkle, Columbus, OH 43209. The "dead" line is January 13. Don't look now, but babysitting and transportation are available by request. Call Sandy at 237-1337. He who hesitates misses one great time!



## MAKE US A PART OF YOUR GROCERY SHOPPING IN THE NEW YEAR



We hope this shopping cart with money logo reminds you that we have a wonderful fund-raising project available to us. As a non-profit, we are able to buy grocery gift certificates from Kroger and Meijer stores at a discount. These are the same as cash to shoppers in the store and are good for anything except tobacco and alcoholic beverages.

Though we all have agreed that this is a painless way to make money for Temple projects, we do not have the level of participation we would like to have. Is there any way to make it easier? Certificates are available from Marlene in the office, from the gift shop where they can be charged, or by mail from Barbara Seeder. We have them for sale at the end of Religious School sessions on Sunday and at most Temple meetings and events. We need to buy and use these certificates repeatedly to make the small profit we realize add up. All Temple members can and should participate.

We have all resolved never to eat again, but we know it won't last. Let's at least buy all that healthy food we've promised to eat from Kroger or Meijer using certificates we buy from Temple Sisterhood. Shopping carts full of money for Temple projects would be a great way to start the year. Call Barbara Seeder at 436-1176 with any questions.



## JODY SCHEIMAN ELECTED TO NATIONAL BOARD OF THE UAHC

At the Northeast Lakes Council, UAHC Regional 25th Anniversary Biennial, recently held in Columbus, Ohio, Jody Scheiman was elected to the National Board of the UAHC and also serves as a member of the Regional Board. Also serving on the Regional Board are: Bunny Kotzer, Ernest Stern, Fred Summer, Cantor Vicki Axe, Rabbi Bradley Bleefeld, Beverly Shafran, and Dr. Steven Tuckerman.

Meeting in plenary session, the more than 350 delegates from Michigan, Indiana, Ohio, Western Pennsylvania, and Western New York elected Morris Weinstein of Rochester, New York, President of the Region.

Rabbi Alexander Schindler, President of the UAHC, and Rabbi Daniel Syme, Senior Vice President, charged the delegates to strengthen their congregations to meet the challenges of the 21st century. Hearts were opened and blessings prevailed as David Hachen, our Regional Rabbi, was congratulated on 25 years of service to our congregations and the UAHC. Honors went to both Rabbi Hachen and Assistant Regional Director Judith Lichtig for their months of careful planning.

All the participants at the Biennial felt that this was the most rewarding and meaningful UAHC Conference they had ever attended. Many new programs and materials were shared, and a wonderful feeling of warmth and inspiration prevailed. All agreed that the three Reform Congregations of Columbus had done a superior job in handling the program and arrangements.

The next National Biennial of the Union of American Hebrew Congregations will be held in Atlanta, Georgia, November 29 to December 3, 1995, and the next Regional Biennial of the Northeast Lakes Council will be held in Buffalo, New York, November 8-10, 1996.

## NOTEWORTHY

The music of the Jews has always been reflective of the era and location of our dwelling as we have wandered across time and space. We have synagogue music which is reminiscent of the monophonic chant styles of the early centuries of the common era. We have music which has the flavor of 15th century Spain. We have music which was borrowed directly from Western European hymnals of a century ago. And the synagogue music of today is certainly influenced by the pop, and folk music of our own time and place.



In 16th century Italy Salamone Rossi, a Jewish composer working as a court musician, left a large legacy of compositions, some of which was for the synagogue, and all reflective of Italian Renaissance music. Salamone Rossi was born in Mantua, Northern Italy around 1570. He was descended from a prominent Jewish family which had been brought to Rome from Jerusalem by Titus as captives. Rossi served, from 1587-1628 as court musician to the Gonzaga Dukes of Mantua, Guglielmo, Vincenzo and Fernando. During this time he was a violinist, singer, and composer at the Ducal courts. Rossi was prolific as a composer and published 13 large volumes of music.

While Rossi's name is not well known today, he was responsible for several significant contributions to the development of musical composition. He wrote the earliest known four movement type Sonata which, published in 1613, served as a model for Vitali and Corelli. He wrote one of the earliest, perhaps even the first, trio sonatas. And he collaborated with Claudio Monteverdi in the writing of several works.

In addition to his secular music, Rossi wrote extensively for the synagogue. While the style strongly resembles the motets and madrigals written by the Venetian composers of his time, here and there a minor cadence, rarely found in church music or some other suggestions of Jewish liturgical tradition can be heard. It was quite remarkable for a composer known as Salamone Rossi, EBREO (the Hebrew) to have risen to such an important position in the courts of the day, and still remain faithful to the religion of his ancestors.

On Friday night, February 10, 1995 we will journey back in time and present the Synagogue Music of Salamone Rossi. Joining us for this unique musical Shabbat will be the Ft. Hayes High School Concert Choir and String Ensemble under the artistic direction of Ms. Kathy Gall. Ms. Gall serves as the alto in our professional quartet and has made a commitment to bring quality Jewish choral repertoire to her very talented high school students. In addition to performing here at Temple, our Temple Israel Choir will host these young performers in their homes for a traditional Shabbat dinner. This promises to be a wonderful sharing of our culture with the Columbus community. And this promises to be a wonderful opportunity for all of us to hear to the beautiful synagogue music of the Italian Renaissance composer Salamone Rossi.



## FROM THE EXECUTIVE DIRECTOR

As we say good-bye to one year and look forward to the next, I know that each of us has things that we look forward to: losing those extra holiday pounds and/or inches that "just somehow seemed to appear . . ."; getting out our thank you notes for the three paisley ties we received from fellow workers in the office gift exchange (before we exchange them for the socks we really need); getting our recipes organized and filed so that we can find them in time to make an informed decision that it's more efficient to call BLOCK'S or MARTIN'S or BIG BEAR to order goodies than to actually make something to take to our friends' Super Bowl party, etc., etc., etc.

One New Year's resolution I'd like us all to consider adding to our 1995 list is to find a way of becoming more involved with Temple Israel.

Young or old; long-time member or new, every one of our congregants brings something to the table that our Temple can use.

**Volunteer.** We have standing committees (some that meet, at most, quarterly so you shouldn't have to make a big time commitment . . .) and some that (if you wanted) could meet weekly. A list of our standing committees follows these brief words.

**Help out with special projects.** Did you know that we feed the hungry twice a year? That means we're cooking food, taking it to a shelter, and dishing out the grub. (The feel-good that comes from being a part of this effort lasts for months! Ask Marc Simon, who supervises the cooking or Karen Mozenter, who coordinates the project. There's a reason they keep coming back!)

**Bring your family and friends to Temple.** Share simchas with your Temple family by sitting on the Bima, lighting Shabbat candles, and maybe even getting an aliah (reading the blessings before and/or after Torah readings). An engagement, anniversary, birthday, whatever, is a **good** reason to celebrate at Temple!

\* Whatever your reason, whatever your excuse, consider being more involved with Temple Israel in 1995. You know you're welcome here. It's **YOUR** Temple.

**USE IT RELIGIOUSLY!**

Happy New Year, everyone.

*Paul Dicker, Executive Director*

P.S. Here's that list of standing committees:

Adult Education	Archives	Art & Beautification
Budget & Finance	The Temple As A Caring Community	
Dues Collections	Education & Training	Fund Raising
Honors	The House Committee	Marketing
Membership	Music	Outreach
Social Action	Special Events	Use of Facilities
Young Adults Congregation		Youth Activities

## TAKE MY HOUSE, PLEASE! (HOUSEMATE WANTED)

Single female with house in Bexley is looking for someone to share expenses. Three bedrooms, bath & a half; two car garage. Non-smoker preferred. Cost: \$600/month. For more information, dial 238-0039 evenings (or leave a message on the machine).

As *BULLETIN* space provides, we will run these kinds of announcement free for our congregants. Please send your information to Paul Dicker, Temple Israel, 5419 E. Broad Street, Columbus, OH 43213-1499, or FAX them to 866-9046.

## SPECIAL THANKS

We want to acknowledge and thank those members of our congregation listed below who have shown their support and caring by setting their yearly dues at \$5,000 or more:

Robert & Joan Aronson  
Sidney & Sally Blatt  
Millard & Diane Cummins  
Robert & Marjorie Garek  
Kenneth & Carol Gilman  
Elliott & Pat Grayson  
Howard & Marcy Gross  
Franklin & Linda Kass  
Arthur & Sara Jo Kobacker  
Arlene Landers  
Charles & Dorothy Lazarus  
Robert, Jr. & Mary Lazarus  
Stuart & Paula Levine  
Thomas & Nancy Lurie  
David & Bonnie Milenthal  
Stephen & Lynda Nacht  
Eleanor Resler  
Herbert & Betty Schiff  
Ernest & Aurelia Stern  
Steven & Judith Tuckerman  
Michael & Arlene Weiss  
Gloria Wells  
Les Wexner

## JOBS . . . JOBS . . . JOBS

Another listing from a congregant looking for gainful employment:

**OFFICE MANAGER**, now working in medical office, seeks new challenges. Currently supervising staff of four. Does patient billing, insurance claims; sets up seminars; and much, much more. Experience in legal field as well. Dedicated, loyal, not a clock watcher.

If your company is in need of an office manager with nearly a decade of experience in the field, contact Paul Dicker. He'll put you in touch.

This Temple Israel Job Bank is on a trial basis. If you have a vacancy to fill or are looking for specific types of placement, send me a confidential note and we'll see what we can do. Congregants only, please.



## TEMPLE ISRAEL INVOLVED WITH NEW SUPPORT GROUP FOR SEPARATED & DIVORCED COUPLES & INDIVIDUALS

Columbus has a Divorced & Separated support group (for those recently separated or divorced). Present and former steering committee members of D&S are seeking help in establishing a "second step" unit that will meet the needs of people who have gone beyond the initial shock and hurt of the end of a relationship.

The idea for the next step group would include those who have regained their "lost selves" and even those who have begun new relationships. It will be non-sectarian and non-religious, but based on spirituality.

Facilitated by trained volunteers, this support group will offer study sessions, rap sessions, and group instructional sessions, all free to participants (although donations are accepted to help defray the cost of printing, lights, etc.).

The group's interest in Temple Israel includes our proximity to the highway, our off-street parking, and the size of our facility.

The off-shoot organization would likely meet twice a month (most probably on Sunday evenings as well).

For more information on D & S, call the Bexley United Methodist Church at 231-2781 or show up at the meetings at 7:00 P.M. Sundays at the church. The Bexley United Methodist Church is located at 2657 East Broad Street in Bexley. Watch this for more information on the second-step program.

*At right: Checking out the material for the new sanctuary Ark curtains are Gina Petruziello (fabric weaver, L. center) and Deborah Anderson (the artist), with Stan Levin & Dennis Hoffer, the hangers.*

The curtains were commissioned to honor Ruth and Abe Weinfeld and are under the direction and supervision of Jane Goodman, (who invites all Temple Israel members and their friends to come to Temple January 13 for the dedication of the new curtains)!

## NEW MEMBERS' CLASS TO HONOR LEON & SYLVIA DILLON

Geoff Stern, chairman of the Temple Israel Honors Committee, is pleased to announce that the honorees of this year's New Members' class are Lee and Sylvia Dillon. The Dillions have been members of Temple Israel for more than three decades.

Each year Temple Israel honors a special person or persons who have given their time and effort to the betterment of our congregation. The Dillions are previous Auxiliary Board members, long-time ushers, and serve as hosts to visiting tour groups several times a month.

The New Members' Class will be presented to the congregation on Friday night, January 13, in conjunction with the dedication of our new Ark curtains.

A dinner for the new members and their families is planned for the social hall at 6:15 P.M., followed by an 8:00 P.M. service. The congregation is invited to attend the dinner and the service, with reservations required for the dinner. Watch your mail for your invitation.

Plan now to attend to honor the Dillions, welcome the New Members of the Temple Israel family, and joining in the simcha of dedicating the new sanctuary Ark curtains!

## DR. WILSON TO ADDRESS ADULT EDUCATION

Temple Israel's Adult Education Committee Chairman Asher Moser has announced that Dr. Howard Wilson, Professor and Director of Transcultural Studies at Capital University, will speak at the Temple on Sunday, January 22, in the Temple's social hall.

Dr. Wilson's topic will be *Analogies for G\*D, Abrahamic & Mosaic*. In addition to his work in the field of religion, Dr. Wilson has done extensive work in the art of Sri Lanka. He was invited recently by the Metropolitan Museum in New York to photograph their East Indian Art and Sri Lankan collections. Both may be featured in his upcoming book *Analogies for the Divine*.

Dr. Wilson's appearance at Temple Israel is part of the Temple's Sunday Morning Lecture Series and will begin with a breakfast at 9:30 A.M. on January 22. The lecture will begin at 10:00 A.M. and will include a question and answer period that should conclude around 11:30.

Please call Temple Israel at 866-0010 with your reservation. Seating (and bagels) is limited.



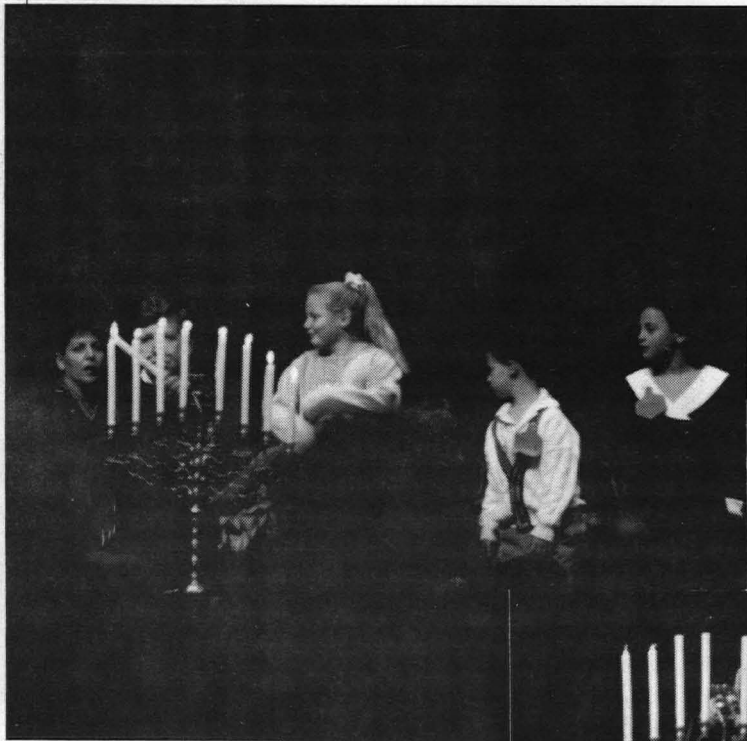
## BROTHERHOOD HANUKKAH DINNER ATTENDED BY HAPPY LATKA-EATERS!

Approximately 150 Temple Israel-ites attended the 1994 Brotherhood Latka Dinner Sunday night, December 4, a part of the Temple's Hanukkah programming.

Chairman Bruce Hartman and his committee set a meal of latkas, brisket, chicken, salad, and dessert (most of which were hand-made under rabbinic supervision - that means Rabbi Bleefeld got to taste-test during cooking) which was underwritten in part by members of the Brotherhood in an attempt to keep the costs down so that all Temple families could afford to attend.

The affair began with an Outreach crafts program under the direction of Outreach Director Bev Shafran (*below*), included a study session in the chapel led by Rabbi Bleefeld (*right*), and a Service in the sanctuary, which welcomed seven Temple families to participate through the lighting of Hanukkah candles. The Nathan Grinshpun family lights candle #3 (*facing page, bottom right*) while Rabbi Bleefeld and the children light the 8th (*facing page, top & lower left*).







## WHAT HAPPENS AFTER I DIE?

### Spirituality Conference IV to Focus on Pertinent Topics on February 26

A major question for today's Reform Jewry is what happens to people after they die. *Spirituality Conference IV* will examine this topic in a one-day session at Temple Emanu El in Cleveland, Ohio, on Sunday, February 26, beginning at 9:00 A.M. Keynote speaker, Rabbi Daniel B. Syme, Senior Vice President of the UAHC, will delve into the ramifications of immortality, reincarnation and faith, based upon the book he co-authored with Rifat Sonsino, *What Happens After I Die?* The day's activities will also include discussion groups, chaired by area professors and Rabbis, and lunch, all for a modest fee of \$15. Please contact the UAHC Regional Office, (216) 831-6722 by February 15 to make your reservation. Watch for more details in the February *BULLETIN*.

## MAZEL TOV . . .

. . . to Mark & Judy Herman on the birth of their grandson Devon Mikael Herman.

. . . to Mrs. Patty Segal and Dr. Jack Goldberg on the birth of their granddaughter Jessica Emma Schneider.

## NOTICE

If you prefer *not* to receive Uniongrams or recognition in the Temple Israel *Bulletin* for your birthday or anniversary, please call Barbara at the Temple office, 866-0010.

## PULPIT SEATS AWAIT YOU

If you or a member of your family has a birthday, anniversary, or other significant date you want to celebrate with your Temple family, give us a call and we'll try to arrange a seat on the Bima for you that week! This is **YOUR** Temple. Use it "religiously".

## JANUARY ANNIVERSARIES

**CONGRATULATIONS** to the following members who are celebrating anniversaries in January:

Joel & Jody Altschule	1/2
Clark & Roberta Berman	1/3
J. Maynard & Rhea Kaplan	1/3
G. Michael & Sharon Bell	1/5
Paul & Francine Podell	1/5
Don & Reva Levy	1/7
Bernard & Anita Orlov	1/7
Melvin & Nancy Martin	1/9
Richard & Elaine Gurian	1/14
James & Barbara Brenner	1/15
Bernard & Nancy Frank	1/15
Richard & Cheryl Greenhut	1/15
Saul & Phyllis Sokol	1/15
James & Maxine Bally	1/19
Irving & Karen Chernoff	1/19
Theodore & Jean Stone	1/22
Barry & Sheila Erdos	1/23
Sheldon & Joyce Paley	1/27
Thomas & Nancy Lurie	1/28

## TAX RECEIPTS TO BE MAILED IN JANUARY

\$250 or more single contribution to Temple Israel will be confirmed (for tax reporting purposes) to those affected and will be included with your January statement.

To qualify, you must have made a single contribution of \$250 or more. Donations less than \$250 do not require and acknowledgment for IRS tax reporting purposes, nor do aggregate amounts of \$250 or more.

If you have any questions, please call our Executive Director.

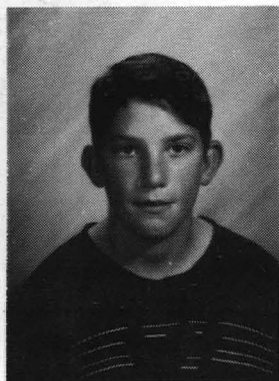


At left, Rabbi Bleefeld poses with members of the Riverside Hospital Hospice team prior to their trial program for widows and widowers held at Temple Israel in November. Results are still being tabulated to determine whether the program will be repeated and/or continued.

## B'nai Mitvah for January, 1995



January 7, 1995 - Ashley Feerer  
Daughter of  
Ronald & Julie Feerer



January 14 - Todd Holbein  
Son of  
Robert & Barbara Holbein

Not Pictured:

January 21, 1995 - Joseph Slade  
Son of Joseph Slade III & Judith Lee

Presenting . . .  
**"WILD, WILD WEST"**  
Saturday, January 28, 1995  
7:30 p.m. - midnight  
Temple Israel Social Hall

join us for western grub, dancin', stage shows, cash bar,  
poker and gamblin' at Sadie's Silver Dollar Saloon for only  
\$20.00 per person (includes one complimentary drink ticket)

R.S.V.P. by January 18 to: Donna Smiley 459-3297  
1329 Langston Drive Columbus, OH 43220

your check payable to **Temple Israel Sisterhood** is your reservation

**WESTERN ATTIRE WELCOME**

Hosted by Temple Israel Brotherhood and Sisterhood

## A MITZVAH OPPORTUNITY!

What should you do with that never-used prayer shawl? How can you dispose of those surplus books on Judaism or by Jewish authors which crowd your bookshelves? How can you participate in a mitzvah from which there is no opportunity for repayment?

These are questions to be addressed to the Drs. Anne and John Sostrom who are currently engaged as volunteer chaplains to the forsaken Jews incarcerated at the Orient Correctional Institution. Monthly, and at every major (and yes, even some minor) holy days, they spend time with the dozen or so MOTs at Orient. The Sostroms conduct services, lead study sessions, and counsel individual prisoners.

The Sostroms have almost no tools with which to carry out this mitzvah. Instead of Tanakhs, they must turn to the Catholic Chaplain's Douay Bibles. For study, they are dependent upon the materials contained in *The Gates of Prayer*. For music, they resort to copied tapes from their personal record collections. Their orthodox and conservative minyan members have no Tallisim. Kippot are leftovers from their daughter's wedding.

And Pickaway Correctional Institute, another of the three facilities on the Orient complex, is seeking another couple to volunteer as Jewish chaplains to their eight or ten inmates. **THIS IS AN OPPORTUNITY!**

Call John or Anne at 262-9635 or contact them through the Temple Israel Office at 866-0010.

## January Schedule of Services

### Sabbath Services

Every Friday Evening at 8:00 P.M.  
except First Fridays &  
Saturday mornings at 10:30 A.M.

### Friday, January 6

First Friday Service  
7:00 P.M.

### Saturday, January 7

Shabbat Morning Service  
10:30 A.M.

Bat Mitzvah: Ashley Feerer

### Friday, January 13

New Members Sabbath  
Ark Curtain Dedication  
8:00 P.M.

### Saturday, January 14

Shabbat Morning Service  
10:30 A.M.

Bar Mitzvah: Todd Holbein

### Saturday, January 21

Shabbat Morning Service  
10:30 A.M.

Bar Mitzvah: Joseph Slade

## SHABBAT VAN

The Shabbat van is scheduled for January 13 and February 10, 1995. Call Kim at Heritage Tower, 237-2521, for reservations. Seats are available on a first-come, first-served basis.

## HOSPITAL VISITS BY CLERGY

Our clergy want to respond to the needs of our congregants who are hospitalized. Though admissions are checked daily, accurate information is not always obtainable from each hospital. In order to assure timely notification, a family member or friend should notify the office when a congregant is hospitalized, and every effort will be made to have the clergy visit.



1995

## January

1995

Sunday	Monday	Tuesday	Wednesday	Thursday	Friday	Saturday
<b>1</b>  <b>New Year's Day</b> <b>No Religious School</b>	<b>2</b>	<b>3</b>	<b>4</b>	<b>5</b>	<b>6</b>  • 7:00 p.m. <i>FIRST FRIDAY</i> Service • 8:00 p.m. Sisterhood Study Group - Library	<b>7</b>  • 10:30 a.m. Bat Mitzvah Ashley Feerer
• Religious School (K-10)  <b>8</b>  • 9:30 a.m. Confirmation Parents Meeting • 9:30 a.m. Sisterhood Board - Social Hall • 6:00 p.m. Outreach Prog.	<b>9</b>	<b>10</b>  • 7:30 p.m. Brotherhood Board - Library	<b>11</b>  • 7:30 p.m. Religious School Committee Meeting - Library	<b>12</b>  • 9:00 a.m. Sisterhood 'Feed the Homeless' - Kitchen	<b>13</b>  • New Members' Sabbath Ark Curtain Dedication	<b>14</b>  • 9:00 a.m. Meal & Spiel • 10:30 a.m. Bar Mitzvah Todd Holbein
• Religious School (K-7)  <b>15</b>  • Tu B'Shvat Seder	• No Preschool  <b>16</b>  <i>Martin Luther King Day</i>  <b>Tu B'Shvat</b>	<b>17</b>	<b>18</b>	<b>19</b>	<b>20</b>	<b>21</b>  • 10:30 a.m. Bar Mitzvah Joseph Slade
• Religious School (K-10)  <b>22</b>  • 9:30 a.m. Adult Education - Library • 9:30 a.m. Sisterhood / Brotherhood - Kitchen • 9:30 a.m. 11th Grade Mtg.	<b>23</b>  • 6:30 p.m. Sisterhood Dinner Meeting	<b>24</b>	<b>25</b>	<b>26</b>	<b>27</b>	<b>28</b>  • <i>TOT Shabbat</i> • 7:30 p.m. Brotherhood/ Sisterhood Program - Social Hall
• Religious School (K-10)  <b>29</b>  • "Bet Bible Heroes" Second Grade Parent Orientation • 1 p.m. TIFTY away	<b>30</b>	<b>31</b>	ANNOUNCING A CELEBRATION OF SHABBAT: A SISTERHOOD TOT SHABBAT  <i>A Service by Rabbi Bleefeld and Cantor Axe</i>  FOR 2-6 YEAR OLDS, THEIR PARENTS AND GRANDPARENTS DATE: JANUARY 28, 1995 10:30 a.m.  SONGS, STORIES, CRAFTS, AND LUNCH For information and reservations, please call Barbara at Temple office, 866-0010			



## JCC TO HOST 1995 REGIONAL MACCABI YOUTH GAMES

The 1995 regional Maccabi Youth Games will be held in Columbus August 13-17 under the supervision of the Leo Yassenoff Jewish Community Center.

Games Director Mike Klapper and Assistant Games Director Amy Baden presented their plans to the Temple Israel Board at its November 29 meeting. Their project was endorsed warmly by those in attendance, who encourage all Temple Israel families to become involved.

The visiting athletes will need housing, transportation, and feeding. Additionally, the JCC is asking for volunteers to help usher, staff information booths, coach, keep score, work on the opening and closing ceremonies, and other pre-games preparations.

The Maccabi Games are open to JCC members and non-members alike.

Opening ceremonies and a community concert are scheduled for Sunday, August 13, at Battelle Hall.

An informational meeting and Maccabi Orientation is scheduled for January 22 at the JCC from 7:00-9:00 P.M. (parents' session from 7:00-7:45). All athletes signing up will receive free T-shirts. Volunteers, please plan to attend or, if that's not possible, please call 237-5223 for more information.

## LOST & FOUND

We have collected several jackets during Religious School classes over the past year. If you are missing a jacket, please call the Temple office, 866-0010.

## KOL AMI NEWS

Thanks to all the parents who were able to come to Kol Ami's Open House! It was great to see all of you!

Here's what's happening at Kol Ami Community Hebrew School:

The first Goal Achievement Award assemblies of the year were held the week of December 12 at all three branches. This twice-yearly event at Kol Ami was established last year. Awards are given to entire classes which achieve a realistic Hebrew learning goal agreed upon by the teacher and all class members. The prizes are also decided on by the students and teachers together. This year we had very impressive goals which were achieved and great prizes were earned!

We are approaching the mid-point of the school year. To mark the end of the first semester, Kol Ami teachers will send home progress reports to parents during the week of January 23. And to give parents a chance to meet with their children's teachers, parent-teacher conferences are being scheduled for January 31 at Temple Israel; February 1 at Agudas Achim; and February 2 at Beth Tikvah.

Hebrew school will be in session for all students during the conferences. Child care will be available for younger siblings at all branches. Parents are encouraged to take advantage of this opportunity to discuss your child's progress with his or her teacher. To schedule a conference appointment please call the Kol Ami office at 237-7686 any weekday between noon and 5:00 P.M.

If you have any questions or comments about Kol Ami, please feel free to call Shaula Gurari, Principal of the Temple Israel branch, or Nancy Heiden, Coordinating Principal, at 237-7686.

## PRESCHOOLERS CELEBRATE HANUKKAH

On the first day of Hanukkah the Preschool held its annual Hanukkah workshop. Preschoolers, along with their siblings, parents, grandparents, and even a great grandmother, enjoyed a variety of activities. Rabbi Bleefeld began our morning with the story of Hanukkah. Then children and guests were able to participate in sponge painting, Hanukkah stamping, making edible dreidles, dreidel lacing cards, and decorating holiday mugs. Thanks to Marc Simon who helped us make tasty latkas and to Cantor Axe who led us in Hanukkah songs and the blessings over the Hannukiah. A good time was had by all.

## RELIGIOUS SCHOOL STAGES JOURNEY TO AMERICA

On Sunday, December 11, Temple Israel Religious School staged *Journey to America*, an immigration experience for 5th and 6th grade Parent Participation Day. The families participated in a simulation, advancing from Poland to Ellis Island and the Lower East Side. Our Confirmation class, who study American Jewish history, assisted by becoming ticket sellers, baggage checkers, guards, and immigration authorities. Teachers Alan Lichtcsien, Arye Berk, Melinda Edwards, Heather Stanich, and Mort Love became the ship captain, registrars, and the American Consul. Dr. Lewis Seeder was the Ellis Island doctor.

Each participant was given a small amount of money to "buy" a first-class or steerage ticket on the boat. Each person received a passport, a baggage check list, and a paper bag "suitcase." They then proceeded from the ticket window and passport application office through the baggage check to the ship. After the "trip", during which families viewed the film *Island of Hope, Island of Tears*, passengers disembarked onto Ellis Island, to make their way through the crowded waiting room to the registration and exam rooms.

## JANUARY RELIGIOUS SCHOOL CALENDAR

JAN. 1	No School
JAN. 8	School for grades K-10; Confirmation Parents' Meeting
JAN. 15	School for grades K-7; Tu B'Shvat Seder
JAN. 22	School for grades K-10; 11th grade meets at Temple
JAN. 29	School for grades K-10; 2nd grade Bet Bible Heroes Parent Orientation
FEB. 5	School for grades K-10

Continued on page 13

After a tasty visit to the Lower East Side of New York with "ethnic food", some provided by parents, everyone enjoyed viewing part of Charlie Chaplin's *The Gold Rush*.

Then it was on to the American Embassy, where the Citizenship Test was given, and families were naturalized and sworn in. Debriefing and discussion was held in small groups as the morning ended. Parents were enthusiastic about the program, with comments ranging from "This was fun" to "very, very, very good" and "This was the best program we ever had."

Follow-up was provided by parents Nathan and Anna Grinshpun, who graciously agreed to speak to the students about their experience immigrating to America. Information on family members who made the journey to America was provided by parents and compiled into a booklet which was distributed to the families.

### WHERE'S ALPHIE?

Neil Rozensky's 7th grade class needs your Alphi's for a class project.

If you would like to donate them, please call the Temple office, 866-0010.

Why do we celebrate Tu B'Shvat in the middle of winter? The reason, of course, is that spring, heralded by the blossoming of the almond trees, begins in Israel. But perhaps we can take another lesson from the timing of the New Year of the Trees. Just as Hanukkah comes at the darkest time of the year to bring us light, thoughts of blossoming trees can cheer our souls and open them to new possibilities. As spring comes to Israel when we here are still in the dead of winter, Tu B'Shvat can stir hopes of renewal within us as well.

Our Tu B'Shvat Seder, to which parents are welcome, is scheduled for January 15. Grades 2-6 have a formal Seder together at 11:00 A.M. in which each grade will read several parts; first grade will have their own Tu B'Shvat activities, and Kindergarten and 7th grade will have a wonderful time together with a brief Seder and fun activities, including turning the 7th graders into trees!

You may be surprised to learn that the Tu B'Shvat Seder is not a new ceremony, but actually dates back to 17th century Jewish mystics. And just as we read in that Seder of the elderly Honi planting carob trees that took seventy years to bear fruit, so we "plant" for our children by giving them roots—our Torah—from which to grow.

Second-grade parents have a special opportunity to share that Torah with their children this year. On January 29 these parents are invited to school to begin working with their children on *Bet Bible Heroes*, family presentations on the people of the Bible studied in 2nd grade. Parents of 2nd graders will receive more details in the mail.

Finally, thank you's this month go to Steven and Rochelle Smith, Marci Delson, and Rebecca Palmer (and back-up driver Alan Acker), who drove 7th graders to Heritage House before Hanukkah (Steven also played the dulcimer, and our music specialist Wendy Cohen played her guitar); to 10th graders Andrea Cohn, Dalia Ermann, Jeff Lipp, Lindsey Mayer, Eric Smiley, and teacher Alan Lichtesien who played roles in the 5/6 grade Parent Participation simulation, *Journey to America*; and to 7th Grade Shabbat sundae bar buyers Jackie Lantz and Barbara Holbein, and servers Judith Wolf, Marci Delson, Shelley Samuels, Marcie Clayman, Linda Manket, and Suzanne Smilack.



#### IF YOU CARE ABOUT

- An Israel where all Jews will feel welcome
- An Israel that rejects religious extremism and grants equal rights to Reform and Conservative Jews
- A strong Reform presence in the World Zionist Organization
- Zionist commitment and education

#### BECOME A MEMBER OF ARZA

Add your voice to the tens of thousands of Jews nationwide who have made ARZA the fastest-growing Zionist body in the country.

Yes, I/WE want to

- ☐ become a new member of ARZA  
☐ renew my membership in ARZA

- ☐ \$5 Student  
☐ \$25 Individual  
☐ \$35 Household - 2 Adults  
☐ \$50 Contributing  
☐ \$100 Sustaining  
☐ \$1000 Life

Association of Reform Zionists of America  
 838 Fifth Avenue  
 New York, N.Y. 10021-7064

(PLEASE PRINT)

NAME (first) \_\_\_\_\_ (last) \_\_\_\_\_

NAME (first) \_\_\_\_\_ (last) \_\_\_\_\_

ADDRESS \_\_\_\_\_

CITY/STATE/ZIP \_\_\_\_\_

CONGREGATION (if applicable) \_\_\_\_\_ CITY \_\_\_\_\_

SIGNATURE(S) \_\_\_\_\_

All memberships are tax deductible  
 Include check payable to: ARZA

## MORE FROM THE EDUCATOR

The following is excerpted from material compiled by Educator Ira J. Wise for the Temple Emanu-El (Oak Park, Michigan) Family Education Committee project, "Jewish at Home":

### What is Tu B'shevat?

*Tu B'shevat* is known as the "new year of the trees." It falls on the 15th of the month of Shevat, which is the full moon. In Hebrew *Tu* is an abbreviation meaning "15". It celebrates our relationship with the Land and our partnership with God. As Jews, we have a responsibility for the Land of Israel and the planet Earth. *Tu B'shevat* recognizes and celebrates this relationship. We celebrate it this year on January 16.

*Tu B'shevat* began as an agricultural holiday. It was a way of marking growing years of trees, since we are not supposed to eat the fruit of a tree until the fifth fruit-bearing year (Lev. 19:25). After the destruction of the Temple in 70 C.E., *Tu B'shevat* became a special day to remember the Jewish homeland and its produce.

In Israel, it marks the end of the rainy season and the rising of the sap. It welcomes the greening of the Land, and is celebrated with glory. In the U.S., it has become a time to donate to the Jewish National Fund, which plants trees in Israel, and by eating fruits from Israel.

In both countries, it is a time to say "thank you" to God for the trees. Trees provide us with so many of life's necessities – food, shelter, clothes – as well as with their natural beauty. *Tu B'shevat* reminds us that we must take care of the trees and our earth so that we may continue to enjoy God's gifts.

### Have a Tu B'shevat Seder!!!

It takes ¼ of the time of a Pesach Seder, is much easier to prepare and a lot of fun. Have it in your home with lots of friends. You will need:

- 4 different colored wines or juices
- Fruit with a peel or nuts with a shell that cannot be eaten (oranges, almonds, mangos, coconut, etc.)
- Fruit with pits or seeds that cannot be eaten (olives, plums, dates, cherries, etc.)
- Fruit that are edible inside and out (apples, pears, carobs, etc.)

Jews who come from Spain and the Middle Eastern countries (called "Sephardim") celebrate *Tu B'shevat* with a Seder - a service combined with a meal in which we eat several special foods in a particular order.

At your table you will need small pieces of each of the three categories of fruit. Taste at least five of each type of fruit and say a special blessing over a fruit that we have not had since the fall. You need only eat a small amount of each (3 x 5 = 15. *Tu B'shevat* is the 15th of the month).

You will also need four colors of juice or wine, ranging in color from light to dark. First we drink the lightest, then light mixed with a little of the dark, then dark mixed with a little of the light, and finally the darkest, which symbolizes the changes that nature goes through in the four seasons.

Or — just come to the Religious School Seder January 15!

### TREES IN OUR TRADITION

From the ground Adonai caused to grow every tree that was pleasing to the sight and good for food, with the tree of life in the middle of the garden . . .

*Bereishit (Genesis) 2.9*

From the very beginning of the creation of the world, God was busy planting, so when you enter the land you too shall plant . . .

*Midrash, Vayikra Rabbah 25.3*

A person's life is sustained by trees. Plant them for the sake of your children . . .

*Midrash Bereishit Rabbah 13.2*

### Trees in our Tradition II

*They shall beat their swords into plowshares,  
And their spears into pruning-hooks,  
National shall not lift up sword against nation,  
Neither shall they learn war any more.  
But everyone shall sit under the vine and fig tree;  
And none shall make them afraid;  
For the Lord of hosts has spoken.*

*Micah 4:3-4*

Once, while the sage Honi was walking along a road, he saw a man planting a carob tree. Honi asked him: "How many years will it require for this tree to give forth fruit?"

The man answered that it would require seventy years. Honi asked: "Are you so healthy a man that you expect to live that length of time and eat of its fruit?"

The man answered: "I found a fruitful world because my forefathers planted for me. So will I so for my children.

*Babylonian Talmud, Ta'anit 23a*

In ancient Israel, it was a custom to plant a cedar sapling at the birth of a boy, and a cypress sapling when a girl was born. The cedar symbolized strength and stature; the cypress signified gentleness and sweetness. The children cared for the trees planted in their honor; and when they grew up and were married, branches were cut from these trees and used on the chuppah during the marriage ceremony.

*Babylonian Talmud, Gittin 57a*

Rabbi Isaac told the following tale, which tells how the greatest blessings for parents are their children: A man was once wandering in the desert,

(see *Trees*, page 15)



(Trees, from page 14)

hungry, thirsty, and exhausted with the heat. He chanced to find a tree whose fruit was sweet, whose shadow pleasant, and which had a brook flowing at its base. He ate the fruit, drank the water, and rested in the shade. When he rose to leave, he addressed the tree:

"O tree, how can I bless you? If I were to say 'May your fruit be sweet,' see, it is already sweet. Were I to say 'May your shade be pleasant' – it is already pleasant. And were I to say 'May there be a brook at your feet' – the brook is already there."

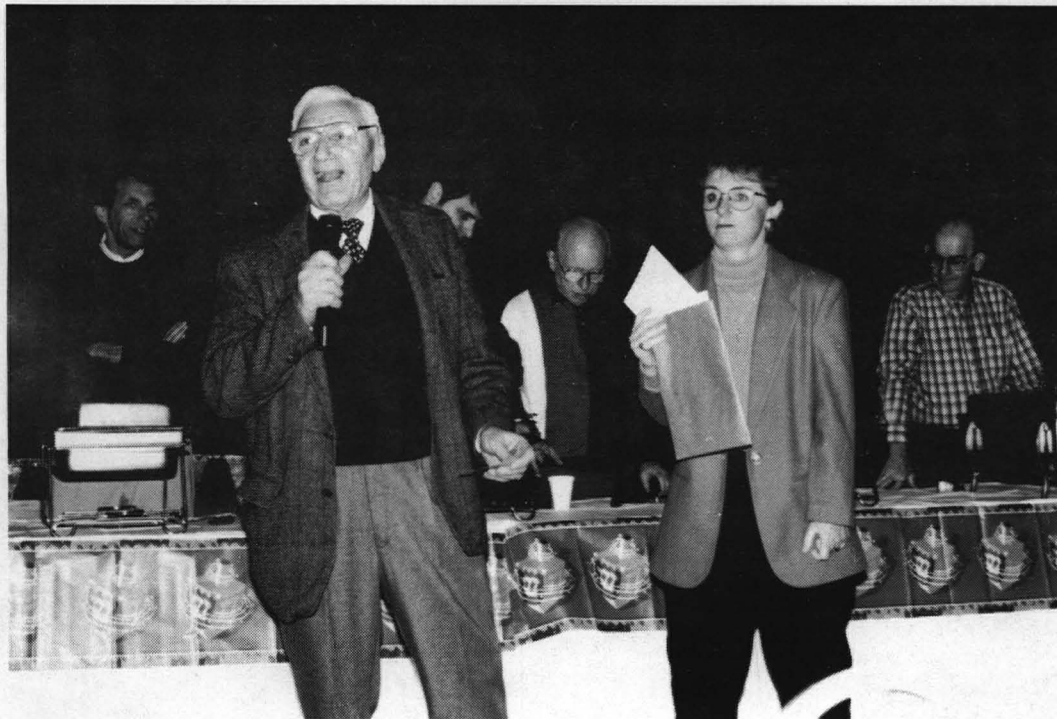
My blessing will therefore be: "May all your saplings be like you."

*Babylonian Talmud, Ta'anit 6b*



**"WHAT DO YOU MEAN THERE'S ANOTHER SHIPMENT?"**

Temple Israel Gift Shop volunteers Barbara Guthoff, Bev Shafran, and Bette Jo Stempel ponder where to display all of the Judaica shop's Hanukkah merchandise.



Brotherhood macher Ted Simson helps Donna Smiley hawk Sisterhood's Kroger and Meijer Gift Certificates to those attending the Brotherhood Latka Dinner, while Roger Blair, Jeff Langer, Henry Saeman, and Sid Greenwald man the serving line.

# CONTRIBUTIONS

## ADULT EDUCATION FUND

<b>Donor</b>	<b>In Memory of</b>
Barry & Annette Turner	Eve Tahl
	Lana Zeitsman
Leonard & Beatrice Ballas	Max Ballas
Jules & Judy Garel	Philip Welber

## ART & BEAUTIFICATION FUND

<b>Donor</b>	<b>In Memory of</b>
Natalie Aberman	Fred Fargeson
	Anne Miller Lipsey
<b>Donor</b>	<b>In Honor of</b>
Murray & Norma Katcher	Tom Lurie's Special Birthday

## FLOWER FUND

<b>Donor</b>	<b>In Memory of</b>
James & Joyce Jacobs	Louis A. Madison
<b>Donor</b>	<b>In Honor of</b>
Tom & Barbara Wilson	Marlene Wolf's granddaughter
	Allie's baby naming
	Mark & Judy Herman's
	grandson, Devon
<b>Donor</b>	<b>Speedy Recovery of</b>
Florence Rubin	Jim Gill

## GENERAL FUND

<b>Donor</b>	<b>In Memory of</b>
Leon & Isabelle Seligson	Ray Wells
Myron Frank	Marie Mirvis
Henry & Mitzi Saeman	Leonard Kaplan
Bob & Bev Shafran	
Bernard Zitsman	Gloria Zitsman
Shelly Kaufman	Florence Kaufman
Kurt & Gert Odenheimer	Ann Green
Bob & Bev Shafran	
Matthew & Ilene Bronson	Selig Epstein
<b>Donor</b>	<b>In Honor of</b>
Mrs. A. Herbert Kanter	Mr. & Mrs. Seymour
	Friedland's granddaughter's
	Bat Mitzvah & Zack's
	birthday
Leon & Isabelle Seligson	The special program "The Jews
	of Tin Pan Alley" by Rabbi
	Kenneth Kanter

## CAROL B. MAIZE MUSIC FUND

<b>Donor</b>	<b>In Memory of</b>
Barb Guthoff & Family	Leonard Kaplan
<b>Donor</b>	<b>In Honor of</b>
Lou & Jane Goodman	Megan Grindstaff's Bat
	Mitzvah
Hope Melgood	Marsha Melgood

## PRAYERBOOK FUND

<b>Donor</b>	<b>In Memory of</b>
Sam & Lona Lowenthal	Sarah Langue Beckman &
	Dr. Theodore N. Beckman
Mrs. Esther Tuckerman	Dr. Sanford Tuckerman

## RABBI BLEEFELD'S DISCRETIONARY FUND

<b>Donor</b>	<b>In Memory of</b>
Bernard Zitsman	Gloria Zitsman
<b>Donor</b>	<b>In Honor of</b>
Ethel Glassman	Muriel Gundersheimer's
	Special Birthday
<b>Donor</b>	<b>In Appreciation of</b>
Donald & Carole Marger	Services at the wedding of
	Richard Marger &
	Ninell Mendyuk
Alvin & Ruth Stone	Visits in the hospital

## CANTOR AXE'S DISCRETIONARY FUND

<b>Donor</b>	<b>In Memory of</b>
Irving & Mildred Schuster	Beloved sister of Lori
	Gilbert & beloved
	daughter of
	Mrs. Dorothy Stein
<b>Donor</b>	<b>In Appreciation of</b>
Robert M. Zwelling	Assistance at mourning
	time for his father
Veronica M. Katz &	Assistance at Walter's
the Katz Family	funeral

## RELIGIOUS SCHOOL FUND

<b>Donor</b>	<b>In Memory of</b>
Doug & Joyce Simson	Leonard Kaplan

## YOUTH ACTIVITIES FUND

<b>Donor</b>	<b>In Memory of</b>
Nathan & Helen Levy	John Sternberg
Manny Block	Linda Block

## TEMPLE ISRAEL FOUNDATION FUNDS

### KATHERINE L. FRIEDMAN RELIGIOUS SCHOOL FUND

<b>Donor</b>	<b>In Memory of</b>
Barb, Arnie Milner &	Pearl Berlin
Carol Friedman	

# CONTRIBUTIONS

## PAULINE & RAYMOND KAHN ARTS ENDOWMENT FUND

**Donor**  
Murray & Norma Katcher

**Donor**  
Ralph & Joan Rosenblum  
Murray & Norma Katcher

**Donor**  
Murray & Norma Katcher

**In Memory of**  
Ann Green  
Berthice Daniels

**In Honor of**  
Betsy & David's Marriage  
Dr. & Mrs. Oscar Weston's 50th  
Anniversary  
Birth of Norma Gurevitz's  
Grandson

**Speedy Recovery of**  
Bette A. Young  
Norma Gurevitz

## NACHT FAMILY TRUST FUND

**Donor**  
Stephen & Lynda Nacht

**In Memory of**  
Ann Green

## EDWARD SHNIDER CONFIRMATION CLASS TRIP FUND

**Donor**  
Jay & Cheryl Agranoff  
Jack & Lucille Cupples & Family  
Doug & Joyce Simson  
The Gantner Family

**In Memory of**  
Morris Teitelbaum

Alice Parsons

**Donor**  
Nilda Shnider &  
Anne Bloomfield

**In Honor of**  
Bat Mitzvah of Mr. & Mrs.  
Sandy Goldman's granddaughter

## BEVLYN & THEODORE SIMSON PAINTINGS ACQUISITION FUND

**Donor**  
Ted & Bevlyn Simson

**In Honor of**  
New Parents Scott & Cheryl Sher  
Grandparents Arnold & Betty Sher  
December Anniversaries of  
Maurice & Florence Zox  
Robert & Marjorie Garek  
Richard & Bunny Kotzer  
Fred & Sandy Summer

## DAVID A. WEINBERG MEMORIAL FUND

**Donor**  
Les & Barbara Weinberg

**In Memory of**  
Leonard Kaplan

## TEMPLE ISRAEL SISTERHOOD FUNDS

### Y-E-S FUND

**Donor**  
Bunny Kotzer

**In Memory of**  
Birthday Uniongram received

### FRANCES L. GUNDERSHEIMER FUND

**Donor**  
Harry & Lois Hofheimer

**In Memory of**  
Leonard Kaplan

### GIFT & MEMORIAL FUND

**Donor**  
Dorothy Zuckerman  
Betty L. Hammond  
Sue G. Cohn & Family  
Dottie Fenburr

**In Memory of**  
Berthice Daniels

William Cohn  
Leonard Kaplan  
Dr. Sam Sculler  
Ann Green  
Leonard Kaplan

Judy & Mark Herman

**Donor**  
Dick & Judy Ridgway

**In Honor of**  
Mark & Judy Herman's  
grandson Devon's bris

Dottie Fenburr  
Dick & Judy Ridgway

Dottie Fenburr

Robert & Bev Shafran's  
Anniversary  
Anniversaries of  
Robert & Bev Shafran  
Maurice & Florence Zox  
Richard & Bunny Kotzer  
Fred & Sandy Summer  
David & Dit Zager  
Leonard & Joyce Schiff  
Robert & Phyllis Greene  
Leon & Isabelle Seligson  
William & Sally Glick  
Allan & Bobbie Weiler

### OKLANDER FUND

**Donor**  
Mr. & Mrs. Ernie Loeb  
Couples Gourmet Club

**In Memory of**  
Ann Green

### UNIONGRAM FUND

**Donor**  
Natalie Aberman

**In Appreciation of**  
Birthday Uniongram received



# NFTY High School in ISRAEL

- **EARN** High School credit
- **IMMERSE** yourself in Jewish history & culture
- **LEARN** to speak Hebrew
- **ENJOY** the NFTY campus in Jerusalem
- **LIVE** with an Israeli family
- **ADVENTURE** filled touring
- **SCHOLARSHIPS** available

Create a Reform Jewish community with outstanding students from all over North America.

For More Information  
Please contact:  
NFTY in Israel  
UAHC Youth Division  
PO Box 443  
Warwick, NY 10990  
(914) 987-6300

NFTY High School in Israel-  
Eisendrath International  
Exchange  
Fall or  
Winter/Spring semesters



FELLOW ACADEMY GENERAL DENTISTRY  
FELLOW ACADEMY DENTISTRY INTERNATIONAL



*Vincent A. Solomon, D.D.S.*  
FAMILY DENTIST  
T.M.J. ORTHODONTICS

(614) 861-6888

BRICE LIVINGSTON CENTER  
6415 E. LIVINGSTON AVE.  
REYNOLDSBURG, OHIO 43068



## MINUTEMAN PRESS & GRAPHIC DESIGN

COMPLETE LINE OF  
BAR AND BAT MITZVAH INVITATIONS  
AT DISCOUNTED PRICES

864-7194

Les and Holly Somogyi

**Better be a person of worth  
than a person of success  
Because a person of worth  
puts more into life  
than he takes out.**

**A person of success  
takes more out of life  
than he puts into life.**

- Albert Einstein

*Courtesy of Arline Landers*

**AMW**  
INSURANCE

## ARCHER-MEEK-WEILER AGENCY, INC.

150 E. MOUND ST. • SUITE 308  
COLUMBUS, OHIO 43215

(614) 221-3225

FAX: (614) 221-3414

*Alan R. Weiler, CPCU*  
President

*"Give Alan a call for insurance and  
money savings proposals on your  
automobile, homeowners and  
business insurance needs"*

Compliments of  
**Craig Tuckerman**  
**THE TUCKERMAN HOME GROUP INC.**  
 and  
**Brian Tuckerman**  
**PREMIER PROPERTIES**

**Lowest Mattress Prices**

**NATIONWIDE WAREHOUSE**

2877 Silver Drive  
 I-71 at Weber Road  
 Columbus, Ohio 43211  
 614-267-7727

**When we cater your event,  
 all that's left to do is have a good time.**



Our quality catering has put us  
 on Temple Israel's list. Put us on yours.

Look to the Hyatt Regency Columbus for  
 extra creativity and style from ice sculptures  
 to hors d'oeuvre buffets when planning bar  
 and bat mitzvahs, weddings and receptions.

We see to every detail so you don't have to. Our full-service catering  
 is available at temple, at your home, or at our hotel. For a completely  
 exquisite affair and impeccable service, choose the Hyatt Regency  
 Columbus. For more information, call 614-463-1234. Ask for our  
 catering department.



**WE'VE THOUGHT OF EVERYTHING!®**

Hyatt Regency Columbus • 350 North High Street  
 Columbus, Ohio 43215 • 614-463-1234

**Get More For Less When You Join**



**at FIRST  
 COMMUNITY  
 BANK**



2121 Bethel Rd.

4300 E. Broad St

Free club checks, unlimited checkwriting, ATM access, no minimum balance  
 requirement, credit card protection, travel programs, accidental death insur-  
 ance, and more discounts on bank and value-added services.

There's also a special club for those 50 & better - with no monthly fee!

Only a \$100 initial deposit is required.



**NFTY** *Spectacular  
 Summer Adventure*  
**IN ISRAEL**

- Challenging Personal Growth
- Magnificent Sights of Ancient and Modern Israel
- Jewish Pride and Self Esteem
- Superior Programs Designed Specially for Reform Jewish Youth
- Great Fun and Friendship

**For more information NFTY in Israel**  
**contact:** **PO Box 443**  
**Your Rabbi, Warwick, NY 10990**  
**Local or Regional (914) 987-6300**  
**Youth Advisor**

Reach more than 800 households  
 through these pages

Advertising space is available in the  
**TEMPLE ISRAEL BULLETIN**

**CALL**  
**LES SOMOGYI**  
**864-7194**

## WE REMEMBER

The following yahrzeits will be read on the dates listed.

### January 6 & 7

Lillian Henkin Abramson	Mildred Kotzer
Alice Barouh	Stanley David Krinsky
Joseph Basch	Bertha Lapine
Ruth Ruchamu Bloomfield	H. David Lefkowitz
David Boxer	Isadore M. Levin
Abraham Coen	Jennie Himmelfa
Jack Cooper	Levine
Samuel Dillon	Taube Levy
Dorothy Dubin	Doris Lubin
Stacie Edelman	Claire Neustadt
Julius Fields	Ida Nusbaum
Benno Forchheimer	Etta Office
Joseph Freedman	Dr. Gerald Pelteson
Hannah Freidenberg	Leon Rosen
Nathan B. Freidenberg	Sammye Irene
Esther Friedler	Rothman
Irve W. Garlikov	Samuel Schechter
Joseph Goldenberg	Sophia Hannah
Joseph C. Goodman	Schneider
Anna Gralla	Sarah Sherman
Edythe Greenberg	Jeannette Skuller
Sam Gurevitz	Rose Sluizer
Gordon Oscar Howell	Rose Smith
Matilda Kahn	Bertha Sternberg
Sara Kastner	Lottie R. Stewart
Ida Kaufman	Sarah London Weiner
Julius H. Klein	Celia Wildfeuer
Mark A. Knolls	Edgar York
Basya Konikova	Joseph Steven Zeidman
Saul Koltun	

### January 20 & 21

Ben Berger	Patricia Levoff
Helen Bernie	Morton Levy, Jr.
Sonia Bloom	Michael Lichtsien
Beth Bowman	Rose Linx
Gus K. Bowman, Jr.	Flora Levy Luft
Herman Brandwein	Herbert M. Lustig
Sheila Burman	Esther Myers
Betsy Lisman Cohen	Bess Newman
Pejsach Ber Epelbaum	Minnie Nirdlinger
Leo Fleischer	Irving Posner
Ann Kopp Frank	Rebecca Graff Rose
Jack W. Frank	Henry Rosenbaum
Samuel Friedberg	Eva Rothfeld
Rabbi Nathan Gaynor	Bessie Salmonson
Rose Gekler	Henry Saxe
Mildred Goldman	Sylvia Sharfin
Louis Greenfield	Gayle Kuhr Sharp
Allison Herwald	Abe Silverman
Diane Herwald	Nathan Sokol
Jonathan Herwald	Rose Sokol
Paul Inglish	Solomon Tobin
Minnie P. Jay	Arkady Traisma
Gertrude Joseph	Mitchell Vangrow
Anna Karr	Nelson F. Weiss
Florence Flossie Katz	Franz G. Westreich
Harry Krakoff	Frieda S. Young
Isidor Levin	Dr. Alex Zipser

### January 13 & 14

Jakov Akselrud	Rubin Heit
Rose Arenson	Ike Kottler
Miriam Mimi Balshone	Rose Levy
Kay Blumberg	J. Simpson Marx
Jerry Borovitz	Regina Miller
Gus K. Bowman, Sr.	Samuel Lewis Mittler
Frances W. Brisk	Stuart Newpoff
Herman Carlstein	Gilbert Nicholson
Hannah Cohen	Helene R. Nusbaum
Jack Cohen	Louis Oppenheimer
Dr. Sol Danchik	Sam Pudlowsky
Molly Eisenberg	Arthur Rothfeld
Fannie Engelman	Faye Ruben
Rose Finegold	Ben Shore
Robert Mortimer Garb	Charles Topkis
Janet Glickman	Rose Visotsky
Sarah Goodman	Ralph E. Weber
Sara Greenland	Herbert Wise
Rabbi Herman Hailperin	Isadore Yavitch
Moses Hattenbach	Evalyn Barbara Yulish

### January 27 & 28

O. L. Barnebey	Newton King
Sydney Barnett	Rose King
Sydney Barnett	Florence H. Kohn
Bessie Bookstaff	Ethel Kotzer
Michael Chandler	Douglas Alan Lee
Jeffrey Craig Cohen	Irving Levine
William W. Cohn, Sr.	Harry Levoff
Leonard G. Cooper	Saul Lipp
Rose Emanuel	Arthur E. Loeb, Sr.
Paul Epstein	Charles Margulis
Aaron H. Fine	Benjamin Markeson
Lois M. Forest	Paul Mozenter
Adolph Frank	Minnie Neustadt
Samuel I. Ganz	Martin Ornstein
Sarah Snider Nelson Gelb	Emil Pabian
Jennie Rachael Gordon	Barbara Paccioretti
Lea Gottfried	Stanley B. Schwaratz, Sr.
Gertrud P. Grant	Saul Schwartz
Mark Gusky	Stanley B. Schwartz, Jr.
Nora W. Gusky	Lyla Shapiro
Abraham Henkin	Dr. Bruce E. Siegel
Tessa Hoffman	Amon Thall
Norman David Honigberg	Vivian Trywusch
Norman Honigberg	Morris Ungar
Russell Joseph, Jr.	Lilly Willow
Eva Pfeffer Kantor	Ben A. Yenkin
Charles J. King	
David King	

**ENTERED SECOND CLASS  
COLUMBUS, OHIO**

HUC-JIR Library  
3101 Clifton Avenue  
Cincinnati OH 45220

## In Memoriam

*We record  
with deep sorrow  
the passing of:*

**Sophia Mendelson**

Mother of  
Anne Mirman-Tyser

**Joseph Reisel**

Uncle of  
Merrie Bleefeld

**Sanford Rose**

Husband of  
Beatrice Rose  
Father of  
Sheri Sherman

*The following names were omitted  
from the December 30 & 31 Yahrzeit list.  
Our sincere apologies for any inconvenience  
this may have caused:*

Mary Kuhner Sharp  
Richard Shook  
Sylvia Thall  
Bertha Richman Wode  
Johanna Weil  
Harry G. Wexler  
Nathan Edward Zager  
William Zaken

TEMPLE ISRAEL  
5419 E. Broad St.  
Columbus, Ohio 43213-1499  
(614) 866-0010 Fax: (614) 866-9046

RABBI ..... BRADLEY N. BLEEFELD  
CANTOR ..... VICKIL AXE  
TEMPLE PRESIDENT ..... Steven Tuckerman  
VICE PRESIDENT ..... Henry L. Epstein  
VICE PRESIDENT ..... David Mienthal  
VICE PRESIDENT ..... Jody Scheiman  
TREASURER ..... Robert Kellerman  
ASST. TREASURER ..... Stuart Levine  
SECRETARY ..... Marcy Gross  
ASST. SECRETARY ..... Kenneth Gilman  
IMMED. PAST PRESIDENT ..... Fred Summer  
EXECUTIVE DIRECTOR ..... Paul Dicker

RELIGIOUS SCHOOL  
DIRECTOR ..... Karen Elson  
PRESCHOOL DIRECTOR ..... Diana Howard  
FOUNDATION PRESIDENT ..... Tanny Feerer  
SISTERHOOD PRESIDENT ..... Judy Herman  
BROTHERHOOD PRES ..... Jeffrey Langer

YOUNG ADULTS CONGREGATION  
PRES. .... Laura Greenland & Debra McKee  
YOUTH GROUP PRESIDENT ..... Alexis Saefer  
BULLETIN EDITOR ..... Paul Dicker  
BULLETIN LAYOUT ..... Sunny Carney

PAST PRESIDENTS:  
Robert S. Aronson ..... Charles Y. Lazarus  
James Brenner ..... Ernest Stern  
Sidney I. Blatt ..... Seymour L. Stern  
Rita Cohen ..... Joseph Summer  
Norman Folpe ..... William L. Glick

THE TEMPLE ISRAEL BULLETIN USPS 537600 is published monthly by Temple Israel, 5419 E. Broad St., Columbus, OH 43213-1499. 2nd class postage paid at Columbus, Ohio. POSTMASTER: Send address changes to Temple Israel Bulletin, 5419 E. Broad St., Columbus, Ohio 43213-1499.