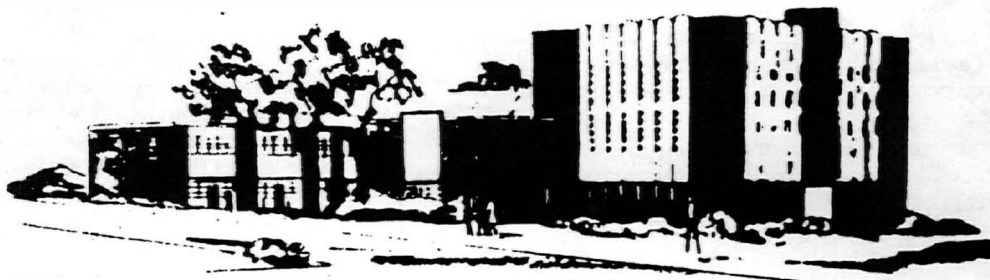
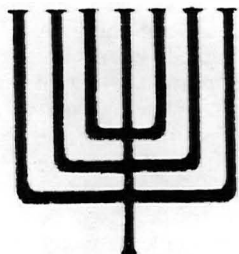


# TEMPLE BETH EL OF NORTHERN VALLEY



Vol. 28 No. 3

November 1989

## Rabbi's Message

### "We Own a Camp"



We own an incredibly beautiful summer camp. Do you know about it?

It's located in the foothills of the Pocono Mountains about 90 miles due west of here, just off Interstate 80. Yes, we own it, and my dream is to have all of our children spend at least one session there - preferably a two session summer. Some have already spent many years there.

While its magnificent 350 acre campus bristles with large, state of the art facilities, its unique program stresses Jewish identity. But it is a place as well for *playing*: (Daily instruction and recreation in tennis and softball, volleyball, soccer, basketball, archery, street hockey, track and gymnastics and exercise along with non competitive games and elective club activities: ping pong, chess, cooking, etc.) There is instructional swimming according to all the American Red Cross swimming levels including optional Life Saving courses. There is free swim for fun in one of three beautiful pools at least once a day. There is boating, kayaking, tubing and other waterfront activities on Lake Joshua, with skilled boaters taking canoe trips down the Delaware River.

And our camp is a place for *Creating*.

There are arts and crafts (ceramics, enameling, leather work, silk screening, weaving, painting, woodwork, candlemaking, batik, tie dye and more).

There is theater: plays, musicals, theater games, and all-camp productions. There is music: daily all-camp song sessions, choirs, and instrumental groups. There is radio WJBH programming, radio show production and broadcasting. There is photography: basic photographic and dark room skills, exhibits of campers' works. There is dance (modern, creative and Israeli dance and international folk dancing, and square dance programs).

There is nature and campcraft: hikes, camping skills, overnight campouts, and a scouting program facilitated by our own Israeli Scouts who are in residence - along with an exceptional staff of 130, many of whom are former campers who have become counselors; specialists and supervisors, each highly skilled in their areas. And of course at our camps Jewish Identity is heightened through *learning*.

Each age group explores a variety of Jewish themes through discussion projects, activities, presentations and special, all camp culminating activities. It's done as camp not class, and so participation is enthusiastic and spirited. Services are prepared for Shabbat by campers themselves to be experienced by the entire camp community. The Eisen-drath Chapel, set on a hillside overlooking the camp and the lake is, without reservation, the most inspiring outdoor

(continued on Page Two)

## Shabbat and Holyday Services

### Friday, November 3

Shabbat Service ..... 8:15 pm  
Guest Cantor Fred Herman

### Saturday, November 4

Minyan & Torah Study ..... 10:30 am

### Friday, November 10

Shabbat Service ..... 8:15 pm

### Saturday, November 11

B'Not Mitzvah: Ali Zisk & Cheri Silverstein  
Oneg Shabbat: Caren & Mark Zisk  
Nadine & Richard Silverstein

### Friday, November 17

Family Service ..... 8:00 pm

### Saturday, November 18

Bar Mitzvah: Michael Bob ..... 10:30 am  
Tot Shabbat ..... 9:30-10:00 am  
Oneg Shabbat: Edith & Geoffrey Bob

### Wednesday, November 22

Thanksgiving Ecumenical Service ..... 8:00 pm  
Demarest Baptist Church

### Friday, November 24

Shabbat Service ..... 8:15 pm

### Saturday, November 25

Bat Mitzvah: Jaime Poller ..... 10:30 am  
Oneg Shabbat: The Parents of Jaime Poller

### Friday, December 1

Shabbat Service ..... 8:15 pm

### Saturday, December 2

Bar Mitzvah: Ryan Lederman ..... 10:30 am  
Oneg Shabbat: Harriet & Sanford Lederman

(Rabbi's Message....continued)

synagogue I have ever experienced.

Visiting faculty consisting of rabbis and educators, along with Israeli and English international staff, serve as teachers and resource people - in T shirts and sweatshirts not in "tie and jackets."

Finally, our camp is divided into four dimensions: 1. Junior Camp includes 4 or 8 week programs for campers who are at least 8 years old by June, through and including those who have completed 8th grade.

2. Chavurah: 4 or 8 week programs set on a separate campus facilities for campers who have completed 9th or 10th grade. 3. Machone (cit) 8 weeks counselor-leadership training. 4. Israel Experience, 6 week study tour of Israel offered in conjunction with U.A.H.C. for campers who have completed 10th grade.

Our camp is Camp Harlam, "a camp with a purpose." Originally a gift from Joseph and Betty Harlam, it's grown to 350 acres with a population of 460 campers each session. Arie Gluck has served as director of Camp Harlam since 1966. Once a member of the Israeli Olympic Team, he studied Physical Education at Wingate Institute in Israel, and completed his Master in Education at New York University. Through his vision and planning the camp has grown and prospered through 23 years of excellence.

It is a total summer camp, a total experience in Reform Jewish Living. One parent summed it up by writing, "Thank you for making Judaism beautiful for our children."

I call Camp Harlam "ours," because it serves the Reform congregations of the New Jersey/West Hudson Valley Council of the U.A.H.C. (as well as the Pennsylvania and Mid-Atlantic Councils).

Camp Harlam is ours, and one session spent is equal to the Jewish identity that can be formed in four years of religious school. While totally recreational, it enhances a love of Judaism that lasts a lifetime. Witness Sherri Newman - our youth director and one of our most creative and dedicated teachers, herself a product of Camp Harlam.

This summer I revisited Harlam for the first time in many years. Frankly, I forgot how wonderful it is. We always have had children in attendance as this year, yet I forgot the smiling faces, the spirit, the loving affection the younger children receive from the counselors and staff, and the direction, support, and role model the older campers receive.

Would that one session at our camp (at least one) be a required part of our religious school training. Our Temple Beth El kids would have such a different view of themselves, their own Judaism and the Temple itself. Ask the kids who have gone there. Arie Gluck will be visiting with us at Beth El. (We will publicize his visit.) Video tapes are available to borrow to see my dream.

If 30 youngsters would go to Harlam together this summer - it would revolutionize our Youth Program here; it would give them (4 or 8 weeks) a summer they would never forget.

We Own A Camp. Let's use it.

*Rabbi Fredric S. Pomerantz*

## President's Message

Dear Congregants:

It is the midst of the High Holidays and we are planning the year's events; however, this is already November when you will see this article. Quite honestly, I'm at a loss at what

I can tell you that I haven't already spoken of at Rosh Hashanah or Yom Kippur.

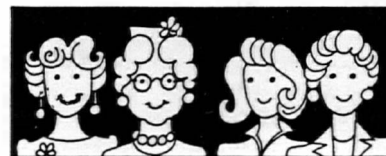
Our planning for the Torah Project is just beginning. A contract for the purchase is about to be signed. Events are to be scheduled. But what is truly more important is that all of us - young and old - will be able to participate and participate together. I truly am excited about assisting the scribe as he writes the first letters in our Torah. It was fascinating to learn of the different types of parchment which could be used and to learn that the Torah, once it is finished, will be scanned by a computer to verify its accuracy. Please watch for further announcements about this project - or better yet please contact Harriet Meier or Marty Kasdan to volunteer and/or to contribute.

Many have asked what we will do with the funds which will be raised from this project. We are hoping to raise in excess of \$100,000. This substantial sum will hopefully be available to fund certain capital projects, such as a match to a fundraiser for a new organ which has been proposed by a group of congregants. I hope that the substantial portion will be used as an endowment and that only the interest will be used to help offset our ever increasing operating budget. No such project has ever been tried at Temple Beth El and that is one reason our annual dues have had to increase substantially each year.

The success of this project is up to each one of us - it is a Talmudic commandment to write a Torah - this is a once in a lifetime opportunity to do so. Please join us.

Regards,

*Jan*



## Sisterhood

The time lag between the bulletin deadline and its delivery causes some interesting situations. Here it is early October - but when you read this in November I will be, along with Mim Krieger, Nancy Pivar and Sandy Pomerantz, at the N.F.T.S. Biennial in New Orleans. We hope to bring home new ideas and inspirations for programs of all kinds for our Sisterhood.

At this Biennial Mim Krieger will be elected to and installed as a member of the national board of NFTS - an honor for her and an opportunity to do on a larger scale what she does so wonderfully for our own Sisterhood. We're proud of you Mim!

*Audrey Pekelney*

## NUTRITIONALLY SPEAKING

Our Temple Beth-El Sisterhood is proud to be one of the four participating Sisterhoods in the Kosher Nutrition Program for senior adults in Bergen County. In addition to actual preparation of meals for the seniors, and thus providing a nutritional opportunity that many would miss otherwise, the most significant aspect of the program is the socialization that group meals offer to the elderly. The Nutrition Program also provides a place to meet others, share, and enjoy the company of peers. For many participants, the companionship and social activities which are provided can often

help reduce the loneliness and isolation that can come with advancing years.

If you would like to help each month, or some month, please call Helen Samuels at 569-2659.

#### DELEGATES TO NFTS CONVENTION

Audrey Pekelney, Nancy Pivar, Sandy Pomerantz, and Mim Krieger will be representing Sisterhood at the NFTS Convention in New Orleans on November 1st to 6th.

Their report will appear in the next bulletin.

Congratulations to Mim Krieger, who will be installed as a member of the National Board of Directors. She presently serves as Corresponding Secretary of District Four of the National Federation of Temple Sisterhoods.

#### HELP WANTED.....

##### WORKERS FOR SISTERHOOD BAZAAR

Sunday, December 3rd  
10:00 a.m. to 6:00 p.m.

*Salary — Total Satisfaction*

Call: Mim Krieger at 385-3182 or Sue Asher at 664-6797

*We are an equal opportunity employer*

#### S & H STAMPS

##### - Special Reminder -

If you still have S & H Green Stamps and you would like to give them to us, Sisterhood can redeem them for \$\$\$\$.

Please call Judy Sussmann at 666-2965.

#### SISTERHOOD BAZAAR

December 3, 1989 is the date of the Sisterhood new merchandise Bazaar. Without your help we will not have enough merchandise to offer to the public. The more we have the closer we can get to fulfilling our pledge to the Temple for \$22,000. Please call Sue Asher, 664-6797, or Mim Krieger, 385-3182.

#### BAZAAR RAFFLE

WATCH YOUR MAIL BOX FOR  
YOUR RAFFLE BOOKS FOR BAZAAR  
- \$500 First Prize -

#### Fellowship New

##### WHO SANG.....

*"Whispering Bells" and "Come Softly To Me?"*

JOIN US ON FEBRUARY 3rd FOR A  
DINNER DANCE AND FIND OUT!!

To mark any special occasion, Barbara Denson will send out this lovely card from the Sisterhood Tribute Fund for \$2.00. Please call 567-4569.



Sisterhood of Temple Beth El of Northern Valley

A DONATION HAS BEEN MADE IN

OF

BY

TO THE TRIBUTE FUND OF  
THE SISTERHOOD OF TEMPLE BETH EL

#### ARZA

##### *Victory on Law of Return*

Israel's Supreme Court ruled this summer that the Ministry of the Interior must enforce the Law of Return. The ruling, which came in response to a suit filed by the ARZA-sponsored Israel Religious Action Center, was a major victory for the Reform movement and for the rule of law in the Jewish State.

Since 1984, Israel's Ministry of the Interior has ignored the Law of Return and has refused to register Reform and Conservative converts who immigrate to Israel as Jews. The Israel Religious Action Center, sponsored by ARZA, appealed to the Supreme Court on behalf of five Reform converts who were denied registration. In its ruling, the Court said that the Ministry must register as Jews all converts who come to Israel, and it has no power to make judgments on the validity of a conversion performed abroad.

Reform leaders hailed the decision as a major victory for religious liberty and religious pluralism in Israel. You can help further the cause of religious rights in Israel by joining ARZA, which is financing a series of court cases on behalf of Israel's Reform movement. Contact the Temple office, check off ARZA on your Temple bill, or contact the Temple office.

# SUPPORT FUNCTIONS

## Soviet Jewry Update

NOVEMBER, 1989

### Call to Action for the Uspensky Family, the Temple's Adopted Family!

The Soviet authorities have dealt a cruel blow to Dr. Irina Voronkevich, Igor Uspensky's mother. Dr. Voronkevich, a 77 year-old botanist, has been repeatedly denied permission to emigrate. After 10 years of issuing refusal after refusal to this family, OVIR has finally informed Igor and Inna Uspensky and their son that they will be able to leave — but without Dr. Voronkevich, who is being detained on grounds of state secrecy.

The Uspenskys are now faced with the agonizing choice of going to Israel and leaving their aged mother behind or remaining and perhaps forfeiting their chance to emigrate. In any case, they are determined to keep up the pressure on the Soviet government to act in a humane manner.

Grateful for our past interventions which they believe contributed to their finally winning permission to leave, the Uspenskys are looking to us in the American Jewish community to help in their fight.

The facts of Dr. Voronkevich's case are as follows: She worked at the All-Union Research Institute of Phytopathology of the USSR Ministry of Agriculture until her retirement in 1976. It is alleged that in the course of this employment she had access to classified materials. But that was more than 13 years ago. One might question what aspects of Soviet agriculture science were classified and are still so sensitive as to block her departure.

I ask that you write today, urging that Dr. Voronkevich be allowed to leave together with the rest of her family, thus ending their decade long ordeals as refuseniks that wreaked havoc with their professional and personal lives in their native land. You might stress that the Soviets' behavior in this case is contrary to the new spirit of international cooperation that has significantly altered relations between the East and the West. Moreover, their detaining Dr. Voronkevich on rounds of secrecy in connection with work she may have done over 13 years ago suggests that the Soviets have been and continue to be in violation of an international convention prohibiting the production of biological weapons.

The Soviet officials to write to are as follows:

Eduard A. Shevardnadze  
Minister of Foreign Affairs  
Smolenskaya-Sennaya Square 32/34  
Moscow 121200  
RSFSR, USSR

Vadim Bakatin  
Minister of Internal Affairs  
ul. Ogareva 6  
Moscow 103009  
RSFSR, USSR

Anatoly Adamishin  
Deputy Foreign Minister  
Smolenskaya-Sennaya Square 32/34  
Moscow 121200  
RSFSR, USSR

Nikolai Ryzhkov  
Prime Minister  
The Kremlin  
Moscow 103132  
RSFSR, USSR

Victor Borden, M.D.

## Youth News and Views



### B.E.S.Y. (Grades 9-12)

Thank you to all of you who helped make our Car Wash a big success! We had 14 energetic BESY members washing, drying and vacuuming...and eventually having a very soggy water fight! We raised money for our scholarship fund and had a great time in the process! By popular demand we will try for another car wash in the spring!!

Please keep in mind our *Toy Drive* which will run for the entire month of November! We would appreciate donations of new, unwrapped toys, books, and games which will be distributed to needy children through the Center for Food Action in Englewood. The Toy Drive is a BESY tradition...please help out by donating a toy or by sending a check which will be used to purchase toys!

Don't forget about our ongoing Food and First Aid Supplies Drive...the collection box is in the Temple lobby. We need nonperishable foods and first aid supplies which will be donated to shelters for the homeless by the Bergen County Community Action Program. BESY is very proud of our involvement in many worthwhile causes to benefit our community!

This month, on November 17-19, Temple Emeth in Teaneck will host the JFTY NEW MEMBER CONCLAVETTE! What is it? Just about THE BEST opportunity for someone new to BESY to get to know what youth grouping is all about, meet people from temples from all over northern New Jersey and have a LOT OF FUN! All students in grades 9-12 who have not attended more than 3 JFTY events are eligible to attend (as long as BESY dues are paid!). Call Sherry (768-5112), Leigh (664-6823) or Danny (666-0748) or Sarah (387-7013) if you would like an application! Call TODAY!!

### Dates to Remember...

Sunday, Nov. 5—7 pm ..... BESY Board Meeting  
Monday, Nov. 6—6 pm ..... BESY Work Night  
Nov. 17-19 ..... JFTY NEW MEMBER CONCLAVETTE  
IN TEANECK, NJ  
Entire month of November ..... BESY Toy Drive  
Saturday, Dec. 2—7 pm ..... Wrap Party, Paramus Park!  
Sunday, Dec. 3—7 pm ..... BESY Board Meeting  
Monday, Dec. 4—6 pm ..... BESY Work Night  
Saturday, Dec. 16—8 pm ..... BESY  
BLACK & WHITE DANCE!!!!

### B.E.N.J.Y. (Grades 7 & 8)

Monday, Nov. 20—6 pm ..... Pizza Series Dinner  
Remember to call Sherry for pizza  
if you have not paid for the year!!  
Monday, Dec. 11—6 pm ..... Pizza Series  
(same as above)  
Sunday, Dec. 17—6 pm ..... Dinner & Movie Night

Temple Beth El Youth Programs is pleased to announce that we are offering a weekend *Ski Trip* for grades 7-12!!! We will offer the trip only if we have enough students and adult chaperones!! The trip is planned for Jan. 12-14 to Gore Mt., N.Y. We will stay at a motel. *Projected* cost for the trip is \$120/person. If you would like a place held for you, please send a \$50.00 deposit to Temple Beth El. Deposits are refundable only until 12/1/89.

\*\*Cost does not include meals...we will let you know how much to bring for meals. Call Sherry Newman at 768-5112 for info.



**HIGH SCHOOL STUDENTS....****Save Saturday, December 16th**

for Beth El Senior Youth's

**Black & White Dance****8:00 pm**

at TEMPLE BETH EL

*Admission: \$5***SEE YOU ON DECEMBER 16th!!!!****YOUTH COMMITTEE MEETINGS...****November 21, December 12, January 2,  
February 6, March 6***All at the Temple. All at 8:00 p.m.!!!*All Temple members are invited to join us  
in our work to support the youth programs  
of Temple Beth El.Call Max Konigsberg (767-3439)  
if you will join us!**From the Religious School****"Dear Parent,**

In an open society and in a culture of countless alternatives, you have chosen to provide a Jewish education for your child. It may have been an easy choice, the simple continuation of a family commitment. Or, it may have been a difficult decision, one which weighed the values and emotional richness of the Jewish experience against an ambivalence or negative experience in your own background. Either way, you have made a commitment to pay tuition, drive car pools, face a maze of time conflicts, and expend a lot of effort in order to expose your child to what a Jewish school offers. Research suggests that it was a good choice, that a Jewish education can help to equip your child with the personal resources to face the value conflicts and emotional trials which are part of growing up today. It is also a choice which is good for the Jewish people.

As we approach the 1990's, Jewish education will increasingly become family education. A hundred years of experience in North America has taught us that a Jewish school is a resource which can provide background and skills, but not an identity or a life-style. In our society, being an effective parent cannot mean relying only on institutions to shape your child's development. It must mean actively becoming part of his/her training and growth. We have designed the materials in the Building Jewish Life series to serve as resources for a partnership between the Jewish classroom and the Jewish home. We know that this is the only way that the values and wisdom of our tradition will become part of the way your child views the world, part of the way she/he faces the tests of growing up.

You have invested a great deal in providing your child with a Jewish education. Building Jewish Life is an invitation to

use the opportunities evolved by the Jewish tradition to see that this education makes a difference in your child's life."

**Building Jewish Life**  
by Joel Lurie Grishaver  
Torah Aura Productions

These materials "Building Jewish Life" plus other resources, both books and videos, are available for borrowing.

Please come to see me in my office at your convenience.

Sincerely,

*Evie Rotstein*  
Education Director

**PARENTS & CONGREGANTS**

IF YOU NEED TO BE AT THE TEMPLE ON A TUESDAY OR THURSDAY, BETWEEN 5 & 6 P.M., PLEASE PARK IN THE FARTHEST LANES FROM THE BUILDING. WE USE THE ENTIRE PARKING LOT AS LANES FOR HEBREW SCHOOL PICK UP.

*Thanks so much!*

**College Corner**

Parents of College Students...

We are updating our college students' list. We DO NOT keep the previous year's list. New and "old" students' addresses must be renewed each year. If you want your child to maintain ties with Judaism and the Temple, fill out the enclosed coupon and mail their addresses to Veronica Jacobs, 123 Willow Drive, Old Tappan, N.J. 07675.

\*\*\*\*\*

Name \_\_\_\_\_

Address \_\_\_\_\_

School \_\_\_\_\_

Year \_\_\_\_\_

**Safe Rides**

The Temple has been kind enough to permit the Safe Rides Program of Northern Valley Regional High School - Demarest to use the Temple library as headquarters for its program. Safe Rides is a parent/student/community program to assist those students who should not drive an automobile while under the influence of alcohol or drugs. The objective is not to promote or condone drinking or drug abuse. It is providing an alternative to those students who would otherwise be forced to drive while under the influence as well as those students who would be riding with them. The program is run by the students with the parents acting as supervisors. The program operates on Friday and Saturday nights during the school year from 10:30 P.M. - 2:00 A.M. It is available to the students who attend Northern Valley Regional High School - Demarest.

## Bar/Bat Mitzvah      A Coming of Age

November 11, 1989

Cheri Silverstein

I am Cheri Silverstein and I am 13 years old. I am pretty much an average teenager. I live in Oradell with my sister, Elyse, and my parents, Nadene and Richard. I am in the 8th Grade at River Dell Junior High School. I like reading, swimming, watching TV, acting and softball. I also take tap, ballet and jazz and I'm a member of the cheerleading squad. I hope to be an executive of a big company. "I've worked hard for my Bat Mitzvah and I know it will be a day I will always remember."



November 11, 1989

Ali Zisk



My name is Ali Zisk. I am 12½ and am in the seventh grade. I live in Haworth, N.J. and go to the Haworth Public School. I live with my parents, Mark and Caren, and my 9 year old sister, Lindsay. Some of my interests are watching T.V., talking on the phone, and babysitting. When I get older I hope to become a successful lawyer. I hope everyone is as excited as I am about this special time in my life. I'm anxiously awaiting my Bat Mitzvah which I know will be one of the best days of my life.

November 18, 1989

Michael Bob

I am Michael Bob and I live in Demarest with my mom and dad, Edie and Jeff, and my sister, Melinda, age 16. I'm in 7th grade at Demarest Middle School, where I am active in sports. I like to collect baseball cards and play computer games. I am not sure about my career choice, possibly an accountant. "I'm excited about my Bar Mitzvah and look forward to celebrating this special occasion with my family and friends."



November 25, 1989

Jaimie Poller



My name is Jaimie Poller. I live in Washington Twp., with my mother, Judith, and my sister, Sher, who is 14 years old. My father is Kenneth. I love to play the piano, softball, and tennis. I enjoy skiing, collecting stamps and coins. I would love to become an ophthalmologist. "I feel very enthusiastic and a part of the Jewish Community. I have been waiting for this day and it's almost here. I can't wait."

**PARENTS  
BAR-BAT MITZVAH MEETING**  
*Teen Age and Parent Therapist*  
Saturday, November 18 — 9:30 a.m.



## Nursery News

The Nursery School children have all been busy adjusting to their new classrooms, friends, and teachers. Now that school has been in session for a month the children are familiar with the routines and have successfully begun the separation process from their parents. Even our youngest Toddlers are able to say goodbye and focus on school.

All of the classrooms are a joy to walk into. The children are busy using the rooms constructively and a tremendous amount of learning is taking place. Much of the learning that takes place in a nursery school is not concrete. Instead the children learn skills in problem solving and interpersonal relationships. They also experience the joy of continued discovery. We often overhear conversations in the housekeeping corner where the children work out who will assume which roles in the family. At other times we hear discussions of construction problems in the block corner. Then we know that cooperation, turn taking, and creative problem solving are all in effect. Watching children attack and master problem solving is one of the reasons why teaching is so satisfying.

We look forward to celebrating Sukkot with the Rabbi in the Sukkah and to taking a trip to the Sanctuary to learn about the Torah.

*Jean Schreiber*  
Director

### NURSERY SCHOOL REGISTRATION

Temple Beth El Nursery School announces its upcoming January registration for the 1990-91 school term. Registration is open to children who will turn 2, 3, or 4 years old by September 30, 1990. Temple members receive priority in registering during the first two weeks of January; thereafter, registration will be open to all members of the community.

To request an application, please contact either the Nursery School office at 768-3726, or call Ivy Greenstein, Nursery School registrar, at 767-8361.

### PARENTING SEMINARS

11/21/89 ..... To Eat or Not to Eat  
12/11/89 ..... Chanukah and the Holidays  
1/16/90 ..... Sleep

All seminars meet from 11:45 a.m. to 1:00 p.m. Call Hope Eliasof at Parenting Center, Temple Beth El, 768-2195.

## Chai Society

NEXT EVENT IS SCHEDULED FOR

**March 23, 1990  
SHABBAT DINNER**

If you wish to help with future activities, please call Bunny Black at 768-4820.



## Honor To Niederhoffers

Richard and Rita Niederhoffer, active in Temple affairs since their affiliation in 1965, will be honored by State of Israel Bonds and Edgewood Country Club at the Club's annual dinner-dance Saturday, October 7.

The Niederhoffers have not only been prominent in Israel Bond affairs at the Club, but have also been leading lights in Bond activities in the Temple. In addition, Richard was Temple treasurer for two years and served on the board for six years. He was on the board of United Jewish Community for two years and the Jewish Welfare Council for a year. He is a member of B'nai B'rith of Northern Valley and the Israel Little League Federation.

Rita also served on the Temple Board of Trustees and the Religious School board. She was a member of the Sisterhood Board for six years, as well as its vice-president, and she chaired several committees, among them the Temple decorating committee.

Further information may be obtained by calling the regional Israel Bond office in Teaneck at 907-0001.

### Please Pass the Word..... Interfaith Couples

#### Opening Doors:

#### A Liberal Jewish Perspective on Inter-marriage

A six week discussion series for unaffiliated interfaith couples sponsored by the Union of American Hebrew Congregations will take place at Temple Emeth in Teaneck, beginning Thursday evening, November 9, 1989. Couples are invited to share issues and concerns of interfaith family life in a supportive, non-judgmental setting. Registration is limited to eight couples. Sheila Pearl, MSW will be facilitating the program. For further information and/or registration, please call Kathy Kahn, Outreach Coordinator, at (201) 599-0080.

## Jewish Parents of Intermarried Couples Group

Jewish Parents Of Interfaith Couples: Looking Forward is a 4-session discussion group meeting on Monday evenings beginning November 6 at Temple Avoda in Fair Lawn. The group will be led by Sheila Pearl, a trained facilitator and it will provide parents of interfaith couples with a supportive setting in which to dialogue with others and attempt to resolve issues which may cause difficulty. The group will meet once a week from 7:30-9:00 p.m. through November 27. *Jewish Parents of Intermarried Couples: Looking Forward* is sponsored by the Outreach Program of the New Jersey-West Hudson Valley Council of the Union of American Hebrew Congregations and its 56 member congregations. The fee for this group is \$75 per couple; \$50 per individual.

For further information on this and other Outreach programs, please contact your Rabbi or Kathy Kahn at the UAHC office, (201) 599-0080.

☆☆☆☆☆☆☆☆☆☆☆☆☆☆☆☆☆☆☆☆  
 ☆ **ENTERTAINMENT '90** ☆  
 ☆ DINING OUT, PARKING, SPORTS EVENTS, HOTELS ☆  
 ☆ ALL DISCOUNTED! ☆  
 ☆ All this for \$35.00 ☆  
 ☆ Payable to Sisterhood Temple Beth El ☆  
 ☆ Mail to: ☆  
 ☆ BUNNY BLACK ☆  
 ☆ 102 Maple Avenue ☆  
 ☆ Closter, New Jersey 07624 ☆  
 ☆ For more information, call Bunny at 768-4820 ☆  
 ☆☆☆☆☆☆☆☆☆☆☆☆☆☆☆☆☆☆☆☆☆

## Adult

## Education



### PROGRAM AGENDA

*Adult Education is delighted to present the following speakers and programs*

**Rabbi Daniel Syme** ..... Friday, January 19, 1990  
 VP of UAHC

Topic: *The Values We Need as Reform Jews*

**Rabbi Philip Hiat** ..... Friday, February 9, 1990  
 DD, UAHC

**Rabbi Howard Bogot** ..... Friday, March 16, 1990  
 National Director of Education at UAHC

Topic: *Planning for the 1990's: Reform Judaism*

**Rabbi Norman Cohen** ..... Sunday, April 8, 1990  
 Hebrew Union College

Topic: *New Wine and Old Vessels:  
 Making the Bible Come Alive*

**Dr. Benjamin Nelson** ..... Sunday, November 19, 1989  
 Professor of English and

Co-Sponsored by Men's Club  
 Comparative Literature Sunday, January 14, 1990

Fairleigh Dickinson University Sunday, February 11, 1990  
 Sunday, March 18, 1990

Brunch at 10:30 a.m.

Topic: *The Crucible of Justice -  
 Four Trials which Rocked the Jewish World*

- The Dreyfus Affair
- The Beiliss Trial
- The Leo Frank Case
- The Adolph Eichman Trial

**ACT I** ..... Friday, March 30, 1990  
*"Break the Silence"*

A one act play written by Isaac Dostis and Diana Sunrise

**SATURDAY, MAY 5, 1990**

*Testimonial for Jan Chason*

SHERATON INTERNATIONAL CROSSROADS HOTEL  
 Rt. 17 North Mahwah, New Jersey

*"A gala evening with gourmet dining"*

## Outreach

### Attention! Congregants Interested in Outreach!

As you have been reading in past bulletins, there are many topics in Outreach to cover. The holidays are upon us - a busy time for all - and it is also a great time for us to meet!

*The December Dilemma:  
Building Your Own Holiday Traditions*

**Saturday, November 18, 1989**

**10:30-11:30 a.m.**

**AT THE TEMPLE**

Call Carol Hermalyn (265-6921) with any questions. We hope to see you then!

### OUTREACH CONNECTIONS - LIGHTING SHABBAT CANDLES

*"More than Israel has kept the Sabbath, has the Sabbath kept Israel."*

These words illustrate the profound gratitude and respect that Judaism feels towards the observance of the Sabbath. There are few other mitzvot that are given such importance, yet the beautiful ritual and celebration of Shabbat is accessible to all. Reform Outreach believes that for those who seek to "live Jewishly," the ritual of lighting Shabbat candles is a wonderful place to begin. We welcome the seventh day at sunset in the familiarity of our own homes. As we face the glow of the candles and recite the blessings over the bread and wine, we are linked with tradition. Nowhere else in Jewish ritual is an act so profound. Yet any one of us is as capable as the most erudite rabbi of bringing creativity and meaning to its performance. Interfaith couples and Jews by choice may find this a wonderful way to open themselves to the observance of mitzvot.

As Abraham Joshua Heschel tells us, "When all work is brought to a standstill, the candles are lit. Just as creation began with the words, 'Let there be light!' so does the celebration of creation begin with the kindling of lights."

Shabbat gives us the opportunity to create a day of rest - a day of holiness.



## The Write Stuff

### *Yesterday, Today and Tomorrow*

by Estelle Padawer

Yesterday, when I was a little girl,  
Before plastics, before foil, before styrofoam,  
Leftovers covered with a plate  
Sat in the icebox.

Today, like corn a' poppin':  
Better, better, more and better.  
Clinging clear plastic covers the leftovers  
And diapers, always clean and never washed.

Tomorrow, mountains of plastics that never will die,  
Incinerators on overload cooking up toxins,  
Birds dead from pecking on styro-bit grubs,  
All sweltering 'neath the o-zone gap.

I take a baby step backwards. Or is it forwards...  
In my handbag the hanky my mom once used,  
In my frig, leftovers covered with a plate,  
Wax paper loosely round the sandwich.  
Am I in my hi-rise or the old walk-up?  
Which today...is this anyhow?  
Which tomorrow?

## No More Nice Guys!

### ALL COMMITTEE

### AND ORGANIZATION CHAIRPERSONS!

ALL FLYERS MUST BE HANDED IN READY TO BE REPRODUCED FOR MAILING! **THERE WILL BE NO EXCEPTIONS!** A committee member must be available to donate help in the preparation of their flyers. Check with Gail at the Temple office, 768-5112, to confirm times for assistance in Temple mailing.

## Contributions

### ADULT EDUCATION

In memory of Stanley Z. Stewart, brother of Elaine Bloom .....

Marlys & Charles Lehmann

### CANTOR'S DISCRETIONARY FUND

Thank you for preparing Danika for her Bat Mitzvah .....

Heather & John Cleary

### GENERAL FUND

Nancy Osserman

Dr. & Mrs. Lewis Rohman

Mr. & Mrs. Samuel Ratoff

In memory of Bernice Frohman, mother of Andrea Hershan .....

Andrea & Robert Hershan

In memory of Frances Eiseman, mother of Steven Eiseman .....

Edith Black

### LIBRARY FUND

Mr. & Mrs. Jerome Weinberg

In memory of Joseph Harris, father of Susan Metz ...  
Maxine & Don Kaufman

### PRAYERBOOK FUND

"In loving memory of my father, David Urkowitz" ...  
Allen Urkowitz Family

In memory of our grandmother, Dorothy Shefrin .....  
Susan Metz & Jill Hamilton

In memory of our father, Joseph Harris, from your loving family .....

Diane & Joseph Harris

Susan & Robert Metz

### PRESIDENT'S DISCRETIONARY FUND

In memory of Gussie & Samuel Taubman, Sarah & David Karpen .....

Leah & Seymour Karpen

### RABBI'S DISCRETIONARY FUND

by Dr. & Mrs. Lewis Rothman

### CONGRATULATIONS TO:

Nathan Goldhaber and Bunny Gottlieb on their marriage.

### CONDOLENCES TO:

Leonard Samet on the loss of his father, Sydney Samet.

Robert Dank and family on the loss of their wife and mother, Bette.

Taube Feit on the loss of her mother.

### GET WELL TO:

Ann Schachter in Englewood Hospital.





**WEDDINGS • VIDEO**  
**BAR/BAT-MITZVAHS**  
 Family & Children's Portraits  
**STUDIO AT DEMAREST POND**  
**(201) 784-0210**

(201) 837-3322 (201) 664-4208  
**JOSEPH POMERANTZ, D.D.S.**  
*Diplomate, American Board of Orthodontics*  
 149 W. Englewood Ave., Teaneck, N.J.  
 180 Old Tappan Rd., Old Tappan, N.J.

**GUTTERMAN**  
**MUSICANT**  
 JEWISH FUNERAL DIRECTORS  
 FUNERALS CONDUCTED  
 FROM CHAPELS THROUGHOUT  
 METROPOLITAN NEW YORK  
 & FLORIDA

*(Special consideration  
 given to Temple  
 members and  
 their families)*

**BERGEN COUNTY**  
**HACKENSACK, NJ 07601**  
 Passaic St. at Park St.  
 Arthur R. Musicant, Mgr.  
 (201) 489-3800

**HUDSON COUNTY**  
**JERSEY CITY, NJ 07305**  
 Kennedy Blvd. at Audubon Ave.  
 Arthur R. Musicant, Mgr.  
 (201) 433-6500

DIRECT LINES: (212) 794-8900 New York City 1-800-522-0588 - Florida

**This ad space is reserved for you -**  
**Call**  
**Mark Hackmeyer**  
**666-0049**  
**or the Temple office**

**PARTIES & PRESENTS**

*Discounted Custom Invitations  
 Stationery and Announcements*

219 Closter Dock Road, Closter — 784-0854

Party Planning, Centerpieces, Favors, Etc.

Barbara Fishman

Bernice Slotnick

**THE PENNYWATCHER'S SHOP**

137 Oakland Avenue, Closter, N.J.  
 767-1977

Gifts, Drugs, Beauty Items, Kodak Film & Developing  
*All At Discount Prices!*  
 Frieda Wells

(201) 767-5830  
**BUDGET PRINTING CENTER**  
 LOW COST QUALITY PRINTING

Bill Laura, Mgr.

316 Harrington Ave.  
 Closter, N.J. 07624



RUTH A. BERG  
 MARILYN HAMBURG

**ADVANCE PERSONNEL**  
*Domestic Companionship,  
 and Baby Nurse Placements*

674 Westwood Ave., River Vale, NJ 07675 (201) 391-6806



**ONE FREE CALL TO A  
 GUARANTEED HIGHER  
 PSAT / SAT Score**

**Educational Services Center**

- Small groups • Improve 100,150,200+ points
- Low tuition • Powerful test-taking tips

Discounts to Members  
 Our 9th year at Beth El

**1-800-762-8378**



**NEW MEMBERS  
 WELCOME**

**LANDESMAN  
 Travel Service**

(Established 1962)

475 Cedar Lane, Teaneck, N.J. 07666—836-4200  
 6-8 Washington St., Tenafly, N.J. — 567-5800

**JOIN US!**

**Arthur L. Ruderman, D.D.S., P.A.**  
**Richard J. Ruderman, D.M.D.**

500 Piermont Road, Closter, N.J. 07624  
 201 - 768-3513

By Appointment

Tues. and Thurs. 8-8 pm - Mon. and Fri. 8-4:30 pm  
 Sat. 8-12 pm

**BETTY  
 HERSHAN  
 REALTORS**

**BETTY HERSHAN**  
 Realtor/Broker

163 Terrace St., Haworth, NJ 07641

201-384-0110

*Weight Watchers*  
 Meets at Temple Beth El

9:30 am 5:15 pm 6:45 pm

For more information, please call:  
 (201) 265-3900

**HAROLD D. SINGER, D.D.S.**  
*Orthodontist*

Adults and Children

384-4440

Closter

Bergenfield

**Patronize  
 Our  
 Advertisers**

**LOUISE BOYARSKY, Sales Representative**  
 Million Dollar Club  
**FELTER STEWART**  
*Realtors*

Office: (201) 768-2442

(201) 784-0235

564 Piermont Road  
 Closter, N.J.

**MIDLANTIC  
 North**

**Midlantic National Bank/North**  
 Executive Offices:

One Garret Mountain Plaza, West Paterson  
 (201) 881-5000.

Offices in Bergen, Essex, Hudson, Morris and Passaic counties.  
 Member FDIC

**FAIRLAWN DESIGN CENTER**

Manufacturers of  
 Fine Custom Upholstery and Draperies  
*Rita Niederhoffer*

(201) 440-2020

48 Moonachie Ave., Hackensack, N.J.

**Sal Cenicola's**  
**HAWORTH BEAUTY SALON**

*Pedicures & Facials*

149 Terrace Street, Haworth, N.J. 07641

384-5656

Open til 9 Thursday and Friday

**SCHLOTT**

**Member Million Dollar Sales Club**

Closter Dock Road, Alpine, N.J. 07620

*Roslyn M. Lampert, Sales Representative*

Bus: (201) 767-0550 Res: (914) 365-2527

"Call A Friend"

TOYS, COSMETICS, JEWELRY, APPAREL  
 PARTY FAVORS, BAR-BAT MITZVAH FAVORS  
 DISCOUNTED

**EVERYTHING +**

CARICATURES FOR PARTIES  
 ALL HAIR ACCESSORIES, GIFT ITEMS  
 NOVELTIES, ETC.

**JOAN — 768-8942**



Charge Accounts

Prompt Delivery

**PLAZA PHARMACY**

Barton's Chocolates

63 Closter Plaza Shopping Center

Closter, N.J. 07624

(201) 768-6655

*B.J. Levine, R.P.*

**BOULEVARD-RIVERSIDE — "A Guardian Chapel"**

**Brooklyn**  
 312 Coney Island Ave.  
 718-633-0400

**Long Island**  
 1450 Broadway  
 Hewlett  
 516-295-3100

**Queens**  
 114-03 Queens Blvd.  
 (at 76 Rd.) Forest Hills  
 718-854-2000

**Manhattan**  
 178 West 76 St.  
 212-362-3600

**Westchester**  
 21 West Broad St.  
 Mt. Vernon  
 914-664-6800

Florida: Dade County - 305-947-6868 — Broward County - 305-947-6868 — Palm Beach County - 305-683-2726

*Serving the Greater Metropolitan Area and Florida*

Directors: Michael A. Hyman-Lewis Smith-Stanley Misikoff-Norman I. Shapiro-Bernard Simon-Martin Kasdan-Haskell Meyers-George Smith

## Meet "Marge"

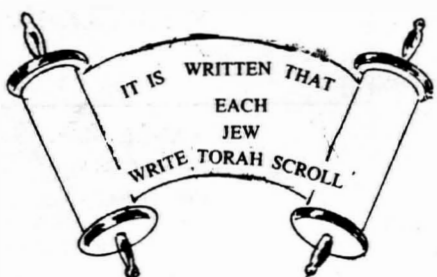
Shalom. My name is Margery A. Gilmore — call me "Marge" — your new Executive Director at Temple Beth El. I was raised in Fort Lee, N.J....before the highrises....and where I presently reside with my daughters, Kate, age 14, and Bella, age 21. I attended Fort Lee High School and Boston University School of Fine Arts.

Prior to coming to Temple Beth El, I was the Administrator at Temple Sinai in Tenafly, N.J. and I was a legal administrator for law firms in New York and Arizona.

I am a member of the National Association of Temple Administrators and Actors Equity Association and have been a member of the National Association of Legal Administrators and the American Bar Association.

In my "spare time" I enjoy reading, walking, going to the theatre or movies, eating out and travelling.

I am looking forward to working with you all here at Temple Beth El. Please stop by the Temple office and introduce yourselves when you are in the vicinity.



## Torah Committee

The excitement of our Torah project has been building to a crescendo. The committee is expanding to include many in the congregation; they in turn will reach out to all, from the youngest to the oldest member so that everyone can join the Torah project. On Yom Kippur Jan Chason gave an eloquent report of what has transpired to date. The first letter of our Torah will be written on March 4, 1990 at Temple Beth El at which time you will be able to witness the scribe at work. Please plan to attend as a family. This will be a momentous occasion for our Temple.

**REMEMBER THE DATE**  
Sunday, March 4, 1990

## Chavurah....

### Small Groups Forming

The Chavurah is a relatively recent development in the collective life of American Jewry. The term, best defined as "fellowship," has been used to describe a range of approaches in which relatively small groups of Jews come together regularly — typically at a private residence rather than the Temple — for montly programs which can range from personal association, to Jewish study, to discussion groups, to a specific interest activity.

We at Temple Beth El have two Chavurot (pl.) which have been together for almost a decade, while the average life of such groups nationally and here are approximately three years.

As an almost 600 family/unit congregation, the Chavurah is a marvelously way for 10 to 15 people to gather, know one another in a more personal mode, and to pursue together common interests — in the Temple or in the world at large.

We have had an Israel Chavurah, a book review Chavurah, a Jewish study group, a gourmet group, as well as others based solely on friendship.

One proposal in our present reorganization is meant for those interested in gardening — and general ecological issues — with the goal of developing a small "Biblical Garden" — plants described in the Bible — on the back hill of the Temple. You will hear about others shortly.

We want you to consider joining one of the newly forming Chavurot. Please call the Temple office with your ideas, leave your names, and watch for more information on this exciting project.

## THANKSGIVING ECUMENICAL SERVICE

DEMAREST BAPTIST CHURCH  
Wednesday, November 22  
- 8:00 p.m. -

*Come and Represent Temple Beth El*

## ATTEND SABBATH SERVICES WITH YOUR FAMILY




# ATTEND SERVICES WITH YOUR FAMILY

☞ Candle Lighting  
based on Eastern  
Standard Time

## NOVEMBER 1989 - CHESHVAN-KISLEV 5750

🕒 Birthday,  
Anniversary,  
Yahrzeit

SUNDAY	MONDAY	TUESDAY	WEDNESDAY	THURSDAY	FRIDAY	SATURDAY
<b>OCTOBER</b> S M T W T F S 1 2 3 4 5 6 7 8 9 10 11 12 13 14 15 16 17 18 19 20 21 22 23 24 25 26 27 28 29 30 31			1 3 CHESHVAN	2 4 CHESHVAN Adult Education 8:00 pm Board of Education 8:00 pm	3 5 CHESHVAN 4 32 🕒	4 6 CHESHVAN Union Biennial New Orleans Noach
5 7 CHESHVAN B.E.S.Y. Youth Board 7:00 pm	6 8 CHESHVAN	7 9 CHESHVAN 🗳️ ELECTION DAY SCHOOLS CLOSED	8 10 CHESHVAN	9 11 CHESHVAN Ritual 8:15 pm	10 12 CHESHVAN Shabbat Service 8:15 pm 4 25 🕒	11 13 CHESHVAN Lech Lecha VETERANS' DAY FEDERAL HOLIDAY
12 14 CHESHVAN	13 15 CHESHVAN Men's Club 7:30 pm	14 16 CHESHVAN Sisterhood Board 8:00 pm	15 17 CHESHVAN	16 18 CHESHVAN	17 19 CHESHVAN JFTY Conclave Family Service 8:00 pm 7th - Shabbat Dinner 4:19 🕒	18 20 CHESHVAN Bar/Bat Mitzvah Workshop Tot Shabbat Vayera
19 21 CHESHVAN Adult Education 10:00 am-1:00 pm	20 22 CHESHVAN B.E.N.J.Y. 6:00 pm	21 23 CHESHVAN Nursery Board 7:30 pm Youth Board 8:00 pm	22 24 CHESHVAN Thanksgiving Ecumenical Service Dem. Bapt. 8:00 pm	23 25 CHESHVAN 🦃 Federal Holiday THANKSGIVING DAY 4:14 🕒	24 26 CHESHVAN Office Closed 4:14 🕒	25 27 CHESHVAN Chaye Sarah
26 28 CHESHVAN	27 29 CHESHVAN	28 30 CHESHVAN ROSH CHODESH	29 1 KISLEV ROSH CHODESH	30 2 KISLEV		<b>DECEMBER</b> S M T W T F S 1 2 3 4 5 6 7 8 9 10 11 12 13 14 15 16 17 18 19 20 21 22 23 24 25 26 27 28 29 30

<b>MORSE'S CLOSTER PHARMACY, INC.</b> <i>Your Community Health Center</i> Open Sundays till 2 William Zipse, R.P. 768-1368 226 Closter Dock Road, Closter, N.J.	<b>INVITATIONS, STATIONERY AVAILABLE</b> Stationery, birth announcements, and invitations (wedding, Bar and Bat Mitzvah) are available at a discount through Sisterhood. Nancy Pivar 767-8631 Laura Chason 573-0125 Ann Rogoff 573-1330	<b>ATTEND MEETINGS</b>  <b>SUPPORT FUNCTIONS</b>
<b>EVAN T. KRIEGER, C.L.U., Ch.F.C.</b> Office: 489-5600 Home: 385-3182 Group, Pension and IRA Plans Financial and Estate Planning Life and Health Insurance Tax Shelters	Complete Home Leonard Sinowitz Furnishings Vice President <b>BERGEN FURNITURE</b> Bergen Upholstery & Furniture Co., Inc. Manufacturers of Fine Upholstered Furniture Since 1929 283 Main St., Hackensack, NJ 07601 489-0555	Software City  Bergenfield, Fairlawn, Midland Park, Montvale, Ridgefield, Teaneck
<b>VIDEO</b> Video-Taping Services <i>Wedding-Bar Mitzvahs-Special Occasions</i> Superior Quality P.O. Box 7401 N. Bergen, N.J. 07047 (201) 869-6715 Rich & Chris Tamian	<b>robert schoem's menorah chapel</b> robert schoem — Past President Jewish Funeral Directors of America main chapel seats 500 — parking for 200 cars on premises w-150 state highway no. 4, paramus	 843-9090

**TENAKILL PRESS**  
**FULL SERVICE PRINTING**  
 Commercial & Social  
**768-3800**  
 251 Closter Dock Road, Closter

Henry Morris 201 - 768-3577  
**Automatic Doors of Bergen County**  
 Automatic Garage Door Operators  
 Sales - Service - Installation  
 198 Walnut St., Northvale, N.J. 07647  
*Free Gift on All Installed Automatic Garage Door Operators  
 With This Ad*

*Hamrah's*

**Beautiful Women's Clothing**  
 Cresskill 871-4444



(201) 567-3099

**A&M PASTRIES**  
 INC.

66 Union Avenue  
 Cresskill, New Jersey 07626

**Dr. Kenneth Gasworth**  
 OPTOMETRIST  
**Dr. Martin F. Schulman**  
 OPHTHALMOLOGIST  
**768 20/20**

520 DURIE AVE. CLOSTER, N.J.

**Laura**



*Superb food and casual  
 elegance is our style. Be it an intimate affair or  
 grand event. let Laura custom plan your wedding  
 bar or bat mitzvah with creativity and expertise.  
 Laura Chersky, proprietress. (914) 359-1110*

201 - 768-0606

**ALAN B. KATZMAN, D.M.D., F.A.G.D.**

*Family & Restorative Dentistry*

458 Tappan Rd., Northvale, N.J. 07647

Office Hours by Appt.

Evening & Weekend Hours Available

**Ladies Tennis & Golf**  
**ACTION WEAR OUTLET**

85 Carver Ave., Westwood, N.J. 07675

666-3520

*Dolores & Dick Friend*

**THE WINE AND WHISKEY BARREL**

7 Broad Street, Norwood, N.J.

(201) 768-1551

**ACCENT ON VIDEO**  
**Video Movies**

*Rentals and Sales*

*Video Equipment and Accessories*

256 Closter Dock Rd., Closter, N.J.

(201) 767-8106

Open 7 Days

**JOHN A. RUBINSTEIN, D.M.D.**  
 General Dentistry  
**ANNE SCHULTZ, D.D.S.**  
 Pediatric Dentistry

466 Old Hook Road  
 Emerson, NJ 07630  
 201-261-7755

475 Fifth Avenue  
 New York, NY 10017  
 212-725-2950

**TEMPLE BETH EL**  
 of Northern Valley

221 Schraalenburgh Road  
 Closter, New Jersey 07624

**Diet**  
**Center**

of Closter/Norwood

Over 2000 Diet Centers across the country have successful results. This program is based on sound nutrition and daily, one on one, counseling with a diet counselor.

- Lose up to 10 lbs. in 2 weeks
- Lose up to 17-25 lbs. in 6 weeks
- Call today for a consultation

16 Broad Street  
 Norwood, N.J. 07648

(corner Broad St. & Blanche Ave.)

Amanda Strauss - 767-5887

Phone 688-5595 - Home  
 Phone 399-906e - Bus.

**ELSIE'S EXCLUSIVE CATERING**

by

*Elsie and Edward Gawryluk*

1155-57 Stuyvesant Avenue, Irvington, N.J. 07111

**ATTEND**  
**MEETINGS**

**TEMPLE BETH EL**  
**OF Northern Valley**

221 Schraalenburgh Road  
 Closter, New Jersey 07624

Non-Profit Org.  
 U.S. POSTAGE  
**PAID**  
 Closter, N.J.  
 07624  
 Permit No. 12

T44  
 HEBREW UNION COLLEGE LIBRARY  
 3103 CLIFTON AVE  
 CINCINNATI OHIO 45220