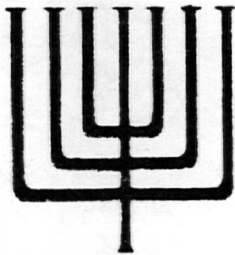


TEMPLE BETH EL OF NORTHERN VALLEY



Vol. 28, No. 5

January 1990

Rabbi's Message

"Left Brain - Right Brain Considerations"



Yes, Yes, you've heard the speculation about the right side of the brain as the creative core; the playful well spring, etc. The left side - of course - logic, analysis, corners squared, checkbook balanced mastery of a core of knowledge. Expertise. This, neurologists teach is an over simplification, yet it is a valuable model to examine.

If right side of brain hosts the spiritual oceanic feeling achieved at times in prayer and meditation - the feeling of being connected to a Greater Source and to other people, then the left side is the site of the understanding of Jewish history, the ideology and theology which we pursue, the planning for the survival of our People and our historic Faith.

In truth, interaction of both is essential for a creative faith that continues as an examined and understood religious system. Left side - right side. Hold a child as she is named on the Bimah; teaching a child Hebrew. Both are paradigms for our being and growing.

At Temple Beth El, Batia Grinblat and her adult education committee work in the arena of the left side of the brain. How to understand the past and the future so that we can better experience the present. To know, so that we can be.

The adult education committee which begins a marvelous new series with the visit of Rabbi Daniel Syme, Vice President of The Union of American Hebrew Congregations on Friday night, Shabbat, January 19th.

To be a Jew by feeling alone is VAPID. This is Judaism which is almost impossible to transfer to yet another generation. Yet, combine feeling with knowing, and with a sense of responsibility to continue (right side of brain) one exhibits a faith of being and doing.

The Adult Education Committee has, over the years, labored to present food for the left side of our brain. To learn, to understand, to acquire skills, to know facts, events, political realities, how to parent our children, how to combat anti semitism or cults; knowledge and facts.

To understand the Torah portion of the week and then to combine it again with the left side; the awe and inspiration and joy from the lesson learned.

So Rabbi Syme's visit, sponsored by the Adult Education Committee and the Shabbat series to follow are only a portion of the important opportunities this group provides. I look forward to sharing this and the other aspects of the program with you, to enhance the wholeness of our Judaism.

At last the challenge! Two new members telephoned and said "on the High Holydays you preached about programs for the "non-traditional" Jewish family (which is 3/4 of us) what about it?"

They were not complaining rather volunteering. They offered themselves and their energy to assist in creating new programs for working parents. They want to be "in on" the change; part of the action.

What about you? What do you need? What would you like to see changed in the next year or so? What would you like to see added in the next year or so? Phone me. Write to me. Let me know.

Are you ready to help re-mold the future? I'll take the first without the second, yet both are better. What shall we do together to deepen our inner life? How can we enhance the roots we extend as individuals, as Jews, as Temple Beth El members, as part of the community, as part of humanity? Let me know.

Rabbi Fredric S. Pomerantz

Shabbat and Holyday Services

Friday, January 5

Shabbat Service 8:15 pm
Oneg Shabbat: Barry & Arlene Garber

Saturday, January 6

Bar Mitzvah: Craig Garber 10:30 am

Friday, January 12

Family Service 8:00 pm

Saturday, January 13

Minyan & Torah Study 10:30 am

Friday, January 19

Shabbat Service 8:15 pm
Oneg Shabbat: Martin & Linda Wymbs

Saturday, January 20

Bat Mitzvah: Melissa Wymbs 10:30 am

Friday, January 26

Shabbat Service 8:15 pm
Oneg Shabbat: Kenneth & Jame Wind

Saturday, January 27

Bar Mitzvah: Matthew Wind 10:30 am

Friday, February 2

Family Service 8:00 pm
Oneg Shabbat: Jeffrey & Joyce Hirschman

Saturday, February 3

Bar Mitzvah: David Hirschman 10:30 am



President's Message Dear Congregants:

During my term of Presidency so far, I have used this column to make you aware of the happenings at Temple Beth El, my goals for the Temple, and how you could help. In this period we have accomplished much, however, as always, there is much more to be done. I am happy that the physical improvements to the Temple have begun and more importantly our educational programming has been reexamined and fortified. Further, A SEFER TORAH IS BEING WRITTEN for Temple Beth El and we all will participate in its writing as well as the many planned programs related to its writing. Your purchases of portions of this Torah will not only allow you to fulfill the mitzvah required of each one of us but will allow us to endow Jewish educational programming at Temple Beth El for years to come. When I leave office, I believe I can be proud that you and I have made significant additions for those who follow us.

This month I would like to address another concern of mine - our UJC Connection. When I mention the UJC (the United Jewish Community of Bergen County), I know many just expect another "shake down" for a contribution. Yes I want each of us to contribute. However, more importantly, as your President, I must explain why we all must participate in this Jewish communal organization. The UJC has over the last few years increased its percentage allocation to local needs. This has not been at the expense of Israel since the actual cash sent to Israel has also increased each year. All this has been possible because we have contributed.

Many assume that the money which goes locally supports the "haves" among us at the JCC and the Y. Not imagining that there can be Jewish people in Bergen County that need kosher meals on wheels programs -- not knowing that the Jewish Home and Rehabilitation Center in River Vale runs significant deficits each year. Our UJC has established a Jewish Education Center that has been providing a major resource to not only the Jewish Day Schools but to the afternoon schools like ours and to our new Bergen Academy of Reform Judaism. The Jewish Family Service in Hackensack which provides counseling to many among us has its deficit met annually by the UJC. Yes, the Chabad and the Jewish Day Schools also receive allocations, but we are all Jews and we should help each other, there is usually no one else who will.

It is my perception that there is trouble brewing in this community. I see that the leadership at the UJC has basically been the same over time. This may not be much different here at Temple Beth El. It is reflective of the new generation of Jews who were born after the establishment of Israel and do not know of the time that the world didn't hold Israel in awe because of its many accomplishments on the battlefield, or in the laboratory or in agriculture. We must support Israel because this tiny nation's existence brings respect to each of us as Jews. Israel has redeemed the great legend of our great past and has renewed our Jewish pride. Israel needs our support, our sacrifice, responsibility, identification and pride. Locally, our financial needs will also not diminish.

How do I summarize this message. We need your help. We need your assistance to make Temple Beth El, our community and Israel strong. As this is the start of a new year - make a commitment - I hope it will be with your time as well as a financial one. Please give me a call and I will direct you to how you can help here at the Temple as well as with the United Jewish Community.

Very truly yours,
Jan

Sisterhood

The winds blew, the temperature dropped, but the crowds came to the Temple on December 3rd and made the Sisterhood Bazaar a huge success! Thanks to our super "chiefs;" Mim Krieger, Susan Asher, Judy Sussmann, and Sylvia Potter-supported by lots of us "Indians" - we did our best ever.

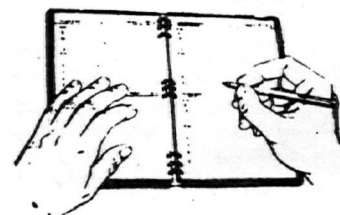
The generosity of those who donated merchandise made the Bazaar possible and their tremendous support is greatly appreciated.

So thanks to the givers and the buyers and all the workers who came to mark and serve and shlepp and push and pull and eat a little too! There is a special warmth that emanates from a group working together for Sisterhood and the Temple. We really are a good group! We encourage you to join us as members and participants; for in our members we have great strength.

As an extra benefit some of the toys and games were donated to the Youth Group Holiday Program and Toys for Tots.

I hope Chanukah is bright with candle light and love and that the New Year brings us Peace.

Audrey Pekelney



Take Note

Important Dates To Remember

The *Bulletin* deadlines for 1990 are as follows:

Friday, January 5 for February issue
Wednesday, February 7 for March issue
Wednesday, March 7 for April issue
Monday, April 2 for May issue
Monday, May 7 for June issue
Tuesday, August 7 for September issue
Monday, August 27 for October issue
Friday, October 5 for November issue
Wednesday, November 7 for December issue

Please bring your typewritten copy to the Temple office.

During each month we will have one additional mailing for congregational *activity flyers*. Submission for this mailing can be presented at the same time as the Bulletin deadline but no later than the following dates:

Wednesday, January 10
Monday, February 12
Monday, March 12
Friday, April 13
Monday, May 14
Monday, August 13
Monday, September 10
Friday, October 12
Monday, November 12
Monday, December 10

Assistance for stuffing these flyers will be needed approximately 2-3 days after the deadline date. Mailing will occur immediately thereafter.

The above deadline dates are being set so that everyone will know when to submit material for their specific events. Please look ahead on your calendars and make sure you meet these dates. The congregation will not be aware of your event unless you tell them.

ARZA

Action Alert

ARZA is asking Reform Jews in the United States to support Women at the Wall, a group of women which is fighting for the right to conduct organized prayers at the Western Wall in Jerusalem. In response to a request from the group, ARZA is asking for donations of \$10 or more for the purchase of a Torah which is needed by the women for prayer at the Wall.

The Torah will be given to the Israeli women in December as a gift from Jewish women of the Diaspora. Along with the Torah, a special scroll will be presented with the name of every woman who has contributed at least \$10.00. Men are urged to contribute in the name of their wife, mother, daughter, or another female relative or friend.

The Women at the Wall have conducted a long and lonely campaign, and they have received little support from Jewish groups around the world. Our participation in the purchase of their Torah scroll is an important act of solidarity and concern.

Women at the Wall was organized in December of 1988, when a group of women took a Torah scroll to the Western Wall for early morning prayers. Some wore kippot and tallitot (scullcaps and prayer shawls). Since then, they have met monthly at the Wall, and have regularly been met with insults and violence by both male and female worshippers.

Men who pray at the Wall do so in organized groups as they would in a synagogue. They may wear prayer shawls and carry the Torah. Women, however, while they are allowed to pray at the Wall in the women's section, have always been required by the authorities at the Wall to do so individually and alone. Religious authority at the Wall is under the jurisdiction of the Minister of Religious Affairs; this has meant that the Wall is treated, in most respects, as an ultra-Orthodox synagogue. The Women at the Wall have argued that there is no reason -- even according to the strictest interpretation of Jewish law -- why women should be denied the right to pray in groups, read from the Torah, or wear prayer shawls and kippot if they so choose. Nevertheless, they have been told that it is against custom in Israel and therefore unacceptable.

Although a number of Reform, Conservative, and Reconstructionist women are involved, the leaders of the group are Orthodox. Nonetheless, the group is usually referred to in the Orthodox and general press as the "Reform Women." *Hamachane Hacharedi* recently referred to the group as the "forces of the Reform Satan."

After the women were repeatedly attacked and harassed at the Wall, they appealed to Israel's Supreme Court. In a ruling handed down last May, the Court ruled that the group must be afforded protection to pray at the Wall, but that the women could not wear prayer shawls or read from the Torah until a hearing on December 27. The December 27 date was set because the Ministry of Religious Affairs said it needed time to prepare its argument that the women's activities should be forbidden. In August, the Court ruled that the women also could not pray aloud as a group at the Wall until the December 27 hearing. Despite the court order requiring protection, the women have continued to be harassed during their monthly services.

The Women at the Wall are asserting their right to pray at a site of great historical, national, and religious significance to the entire Jewish people. The Western Wall does not belong to the Chief Rabbinate nor to the Ministry of Religious Affairs, and these bodies should not have the right to bar the Women at the Wall from praying there. ARZA applauds

the courage and religious commitment of these women, and we ask you to help us help them.

Checks should be made out to UAHC/ARZA and marked "Women at the Wall." All contributions are tax deductible.

Adult Education

As we usher in the new decade we continue our lecture series "Expanding Jewish Horizons." Dr. Ben Nelson will present the second part of his lecture series: The Beiliss Trial on Sunday, January 14, 1990 at 10:30 am. Please join us for bagels and coffee and a wonderful lecture.

Our lecture series continues on January 19 with Rabbi Daniel Syme, who will discuss "The Values We Need As Reform Jews." Please check brochure for future lectures and dates.

In honor of all the adult education patrons we are sponsoring an Oneg Shabbat on Friday, January 19, 1990. All congregants are invited to attend this special occasion.

We would like to thank all patrons and subscribers for their continuing support.

Exodus

Exodus is made up of 11 sidrot and 40 chapters. The first half of the book tells the story of the Exodus from Egypt. The second half of the book is a law code which begins with the 10 Commandments, and includes civil laws, and the directions for building the Tabernacle.

A Sefer Torah is Being Written

A Sefer Torah for Temple Beth El

A SEFER TORAH IS BEING WRITTEN, will be said and written hundreds of times before this program for your new Torah is completed. These words will be the theme throughout for the next year and a half. The Torah Committee feels that this is one of the most exciting projects that has ever taken place in our temple.

The enthusiasm is generated by the fact that everyone in the temple will have an opportunity to participate in some way from the youngest to the oldest.

HELP WANTED: To work with the sub committee for the kick off Brunch. Please call Doris Albirt - 387-0460, Harriet Meier, 387-2359.

Watch your mail for full details on this dynamic project.

H.M.

Seminar

Workshop to Lead Service at House of Mourning.

Many congregants have expressed an interest in conducting services during a shivah. The short service uses the same Hebrew as at the Friday night services.

The Rabbi and Cantor will conduct a seminar covering all aspects of the experience, from being more at ease at the shivah with the mourners, to the order of service itself.

Please call the Cantor at the Temple to register for this group.

Join us for another
Special Service of NFTY Songs
and hear Rabbi Syme speak to us on
Friday, January 19, 1990
All Invited..Bring The Family!!!

Religious School

DO WE OR DON'T WE TEACH HEBREW?

The basic goal of our Hebrew curriculum is to teach Hebrew reading - for Prayer fluency.

We begin in the third grade with a Reading Readiness program - a simple introduction to letters and vowels. We also present 3 useful Hebrew vocabulary words each week. By the end of the year the children have a working list of about 80 words.

In 4th grade, when the students come twice a week, we begin the more intensive presentation of phonetic reading. By the end of February, the entire alphabet has been learned and the hard work of practice becomes very important.

I very often explain to parents and children that reading Hebrew is like playing an instrument. Each week the music teacher sight reads a new piece of music and the student who practices every day will be able to play the piece by the next lesson. Practicing Hebrew reading of prayers is the building block to a successful Hebrew student. Without home practice, there can be no improvement from week to week.

The 5th-7th grade students continue to improve Hebrew sight reading skills and also concentrate on specific prayers during the year. Each grade is assigned a Hebrew ladder with a prayer a month. Below are the prayers your children are learning. They do need to continually practice at home and attend Family Services to reinforce what we do in class.

Aleph

September Shema
October Barchu
November Blessings for Wine, Bread, Candles,
Fruits & Vegetables
December Blessings for Chanukah (P. 777)
January Shehechyanu
February Pesach-Four Questions
March Pesach-Seder Blessings (Maror, Matza, Karpas)
April Mi Chamocha

Bet

September Barchu and Review of Aleph
October Avot - P. 37
November Chanukah Blessings & Sim Shalom-P. 330
December V'Ahavta
January Four Questions & Haggadah (Avadim Hayenu)
February Kiddush-Friday Night
March Hatikvah (P. 765)
April Torah Blessings (P. 443-446)

Gimmel

September Review Shema & V'Ahavta & Avot
October Review Kiddush (P. 719)
November Yotzer
December Haftarah Blessings (P. 439)
January Aleinu (P. 617)
February Kaddish (P. 334)
March Maariv Aravim (P. 193)
April Kedusha & Review

Dalet (Required)

Kiddush (P. 719)
V'Ahavta (P. 33)
Torah Blessings (P. 443-446)
Haftarah (P. 439)
Avot (P. 37)
Yotzer (P. 301)
Romemu (P. 443 & 446)

Choose 4 of the following:

Adon Olam (P. 615)
Reader's Kaddish (P. 334)
Dor va Dor (P. 328)
Ahavah Rabah (P. 321)
Ki Mitzion (P. 446)
Sim Shalom (P. 330)
Seu Shearim (P. 443)
Etz Chaim (P. 447)

Evie Levy Rotstein
Education Director

Nursery School News

The children in the Nursery School had a wonderful time learning about and celebrating Thanksgiving. The toddlers learned songs, made head-dresses and cooked cranberries. Through these experiences, they developed new vocabulary and expanded their conceptual thinking.

The three year old class also had many Thanksgiving preparations. They learned about the Indians and Pilgrims, created many craft projects related to Thanksgiving, learned new songs and cooked cranberries, as well as pumpkin bread.

The two four year old classes had a joyous Thanksgiving Feast with all 28 children together for the occasion. They wore the costumes that they made, complete with Indian vests, head-dresses, necklaces, bows and arrows and papooses. The children prepared corn and pumpkin muffins, corn on the cob and butter which they shucked themselves. Morah Friedman's class performed their Indian songs and Morah Schreiber's class acted out the Thanksgiving Story. Suri Krieger was very generous and came to the school to perform her memorable Indian Story. The children sat in awe as she spoke and sang to them. She was hardly recognizable in all of her authentic Indian gear.

We are now all very busy preparing for our Chanukah celebrations. We are looking forward to our parties on December 22. We always enjoy having the Rabbi and the Cantor join us for these celebrations. As part of our Chanukah preparation this year, the four year old children will make gifts to go to the children on the Pediatric floor of Pascack Valley Hospital. We hope that this will give the children the opportunity to experience helping others.

Nursery School registration for 1990/91 will begin in January. If you would like to observe the school, please contact me for an appointment. I can be reached at 768-3726.

Jean Schreiber, Director



Four Year Old Class in Their Indian and Pilgrim Costumes

Say Hello To Our Librarian

Grace Oliff is Temple Beth El's Librarian. She is in the Temple library Thursday mornings and Saturday mornings. The library is located across from the Temple office. Please stop in and say hello.

Grace graduated from Douglass College and received her M.L.S. from Columbia University. Besides being our librarian she is a professional storyteller and has performed at the West End Theatre, Hans Christian Andersen Statue, various school libraries (currently at the Harrington Park Library and special holiday story programs at Old Tappan's Library) and church groups. She has been a member of the North Jersey Storyteller's Circle since 1981. Her musical talents include some piano, clarinet, autoharp and recorder.

Book News

The Temple Beth El library is off to a good start. Storytime has been held for grades K-6, and our expanded collection has given students greater variety to choose from when they make their selections. We still have considerable gaps in various subject areas and are counting on the congregations continued support so that our collection can grow to be exemplary in terms of both quality and balance. A donation to the Temple library is one of the best ways to support Jewish education.

Grace Oliff, Librarian

NEXT YOUTH COMMITTEE MEETINGS:
January 2nd and February 6th

Youth News and Views



B.E.S.Y. (Grades 9-12)

Thank you to all who contributed to our Holiday Toy Drive. Special thanks to Sisterhood for the donation of toys and games!

JFTY New Member Conclave was a *huge* success! We are happy that the following people were able to participate...Leigh Conditte, Danny Russ, Michael Pivar, Alicia Glickman, David Schreiber, Matt Olsen, Jeff Zaref, Michael Hoffman, and Rebecca Pomerantz, JFTY President. A great time was had by all...don't miss Hagigah Conclave in March!!

DATES TO REMEMBER

Tuesday, January 2 Youth Committee-8:00 pm
Saturday, January 6 Homecoming Dance, Livingston
Sunday, January 7 BESY Board-7 pm
January 12-14 BESY/BENJY Ski Trip to Gore Mtn.
Monday, January 29 BESY Work Nite-6 pm
Sunday, February 4 BESY Board-7 pm
Tuesday, February 6 Youth Committee-8 pm

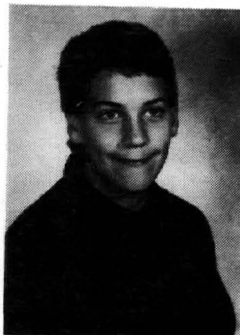
B.E.N.J.Y. (Grades 7 & 8)

Save These Dates:

January 12-14 BENJY/BESY Ski Trip to Gore Mtn.
Monday, January 22 BENJY Pizza Party-6 pm
Saturday, February 10 BENJY Dance
Parental Help Needed!
Monday, January 26 BENJY Pizza Party-6 pm

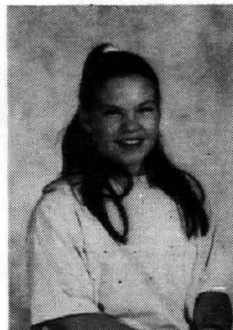
Bar/Bat Mitzvah

January 6, 1990
Craig Michael Garber



My name is Craig Michael Garber. I live in Closter with my parents, Arlene and Barry and my sister Jeni. I attend Village School and I am in 8th grade. I enjoy football, basketball, tennis and listening to my CD's. I plan to be a lawyer when I am older. "I'm very happy to be able to share this special day with my family and friends."

January 20, 1990
Melissa Wymbs



My name is Melissa Wymbs. I'm going to be thirteen in January. I'm in the seventh grade in the Harrington Park School. In school I'm in the seventh and the eighth grade chorus. Outside of school my hobbies are playing softball, riding my bike, swimming, talking on the phone, listening to the radio, shopping, and being with my friends. My family, Linda, Marty, and my brother Danny are looking forward to this special day with me. Since I was in the second grade I've been learning about my Jewish religion. On January the 20th I'm being bat mitzvah, the first one in my family and that means a lot to my family and I.

January 27, 1990
Matthew Wind



My name is Matthew Wind. I am 13 years old. I live in Demarest with my parents Ken and Jane, my sister Ilana, 17 and brother Benjamin, 15. I am in 7th grade at Demarest Middle School. My interests are, soccer, basketball, football, baseball, the Beatles records. My ambition: Don't know yet. My school activities include: Soccer team, basketball team, baseball team. "I am looking forward to sharing this important day with my family and friends."

Welcome To Our New Members

Welcome to the following new members of our Temple family. Please extend a warm and friendly welcome to them and make them feel at home.

Brad & Sandra Kessel
28 Hopkins Street
Hillsdale, NJ 07642
666-8443

Outreach Connections-January

"Reaching the Unaffiliated"

It is an honor to be invited to use this space to introduce a new UAHC initiative, reaching unaffiliated Jews. As past Outreach Coordinator for the New Jersey-West Hudson Valley Council, I know the quality of effort that has gone into welcoming new Jews by Choice and interfaith couples into our congregations. We have given them an accepting framework in which to develop their Jewish connections and to build a Jewish identity for themselves. Through Introduction to Judaism classes, discussion groups for interfaith couples, holiday workshops, learners' services and one-on-one outreach, many non-Jews have been drawn close. We have offered a home and we have in turn been strengthened by them.

This same opportunity for connection and Jewish growth must be actively pursued on behalf of the more than 3 million American Jews who are currently unaffiliated with any synagogue. The newly formed UAHC-CCAR Task Force on the Unaffiliated is exploring ways to provide access to Jewish communal and spiritual life for those Jews who feel they missed out on their Jewish education growing up, for those who see membership as "too expensive," for single Jews, single parent families and young married couples, all groups that are underrepresented in our synagogues.

Our efforts will enable us to touch many Jewish lives, adding strength and blessing now and into the future.

Dru Greenwood

National Coordinator of Programs
for the Unaffiliated — UAHC



Parent Center

The children and parents have been busy with Hanukah arts and crafts, stories and cooking projects. Parents have expressed the importance of the center in beginning to help foster a Jewish identity for their children even at such a young age and discussion groups have focused on coping with the Christmas season and decision making for Jewish families on appropriate participation for their children. Evie Rots-tein will be leading a lunch time lecture/discussion on the Christmas Dilemma for Jewish and interfaith families on December 11 at 11:45 am.

Our new semester will begin the week of January 29 and new brochures will be ready the end of December. Please call me for more info 768-2195. We are planning on offering several new classes which will include a support group for mothers who work outside the home and a four week puppetry class. We are pleased to welcome two new substitute assistant teachers to our staff, Fran Fisher and Romelia Torres. They both are experienced and have an engaging and warm interactive style working with children.

We're hoping to see you at our annual Hanukah party open to the community with children from infants through pre-school. The party will be held Dec. 18 at 11:30 am. Wishes for a Happy Hanukah and New Year from the staff of the Parent Center.

Volunteers Needed by Jewish Family Service

Countless older adults are abandoned and isolated in our Jewish community. Many have no family available to them and are homebound due to disability. As a friendly visitor, by running an errand, or making a weekly telephone call, you can make a world of difference to our clients.

"Reach out to our older adults."

"Let them know we C.A.R.E."

If you are interested in joining Community Assistance and Reassurance for the Elderly, please contact Carol Ramer, MSW, at 488-8340. Supervision and training will be provided.

Interfaith Couples

Opening Doors

A Liberal Jewish Perspective on Inter-marriage

You are invited to participate in an innovative program of open and frank discussion of interfaith relationships. Participants will come together with other interfaith couples in a supportive and comfortable environment to share personal questions about family holidays, raising children, and other issues of concern to interfaith families.

This program concentrates on your questions, your issues and your views in a nonjudgmental manner. It is not conversionary in intent, but it is a Jewish program, offered in a Jewish setting by an experienced group facilitator. Opportunity will be provided to clarify issues, to explore solutions and to discuss questions about Jewish beliefs, practices and traditions.

Opening Doors is sponsored by the New Jersey-West Hudson Valley Council of the Union of American Hebrew Congregations and was developed under the auspices of the Union of American Hebrew Congregations-Central Conference of American Rabbis Commission on Reform Jewish Outreach. The cost is \$75 per couple for the six-week program. Classes meet from 7:30-9:30 pm.

UPCOMING GROUPS

Temple Sinai
Tenaflly, NH
Monday evenings
Feb. 26-April 2

Temple Shalom
Aberdeen, NJ
Tuesday evenings
March 6-April 17

Temple Sharey Tefilo-Israel
South Orange, NJ
Tuesday evenings
February 27-April 3

Some questions raised during previous groups:

*How will we raise our children? Will I feel left out if my religion isn't our family's religion?

*My in-laws don't feel comfortable with the fact that I'm not Jewish (or Christian). How can we deal with this?

*Is a person who is not Jewish welcome in a synagogue service? Will our children be confused if we do "both"?

For further information, contact:

Kathy Kahn, Outreach Coordinator
UAHC 1 Kalisa Way, Paramus, NJ 07652
(201) 599-0080

From The UAHC

Opening Doors: A Liberal Jewish Perspective on Intermarriage

A six-week discussion series for unaffiliated interfaith couples sponsored by the Union of American Hebrew Congregations will take place at Temple Sinai in Tenafly, beginning Monday, February 26. Couples are invited to share issues and concerns of interfaith family life in a supportive, non-judgmental setting. Registration is limited to eight couples. For further information and/or registration, please call Kathryn Kahn, program coordinator, at 201-599-0080.

The Outreach Program of The Union of American Hebrew Congregations, New Jersey-West Hudson Valley Council, invites you to participate in

INTRODUCTION TO JUDAISM, PART II

The focus of this 6-week program will be on the three pillars of Jewish life--God, Torah and Israel--and will be approached through Torah study, experience of Jewish practice and group discussion.

"It takes a while to feel Jewish. Realizing that these feelings are okay cleared up a lot of confusion for me."

UPCOMING CLASSES:

Temple Sha'arey Shalom	Temple Shalom
Springfield	Cedar Grove
Tuesday evenings	Monday evenings
Feb. 6-March 13	March 12-April 23

Classes meet from 7:45-9:45 pm

The cost is \$60 per person; \$75 per couple.

The goal of the program is to enable participants to further explore Judaism for themselves in a supportive environment designed specifically for those who have complete Introduction to Judaism.

To register call the Temple Office or UAHC Outreach, 1 Kalisa Way, Suite 104, Paramus, NJ 07652 at (201) 599-0080.

Temple Congregational Meeting December 5, 1989

The following persons have been elected to the Nominating Committee for the year 1990:

Jan Chason	Nancy Pivar
Marty Kasdan	Tom Loman
Mim Krieger	Alan Baker
Nancy Salen	Art Meier
Barry Garber	Laurie Lester
Marlys Lehmann-Alternate	Arlene Plonchak-Alternate

Vic Borden is chairman of this committee as per our Constitution.

Congratulations to all of the people elected!

Parents of Intermarried Jews: Looking Forward

PARENTS OF INTERMARRIED JEWS: LOOKING FORWARD is a professionally led group experience whose goal is to provide a comfortable forum in which to consider important issues. Some parents will come to talk about their own concerns; others may choose just to listen to others who share similar experiences. The group will provide an opportunity to learn about current attitudes in the Reform Jewish community and to look at important relationships with adult children, grandchildren, and non-Jewish in-laws. It will help participants to find ways to keep the lines of communication open, without feeling their own Jewish values have been comprised.

PARENTS OF INTERMARRIED JEWS: LOOKING FORWARD is a program of the New Jersey-West Hudson Valley Council of the Union of American Hebrew Congregations.

UPCOMING GROUPS:

Monday Evenings, January 15, 1990, 7:30-9:00 pm
for four weeks

TEMPLE BETH TIKVAH, WAYNE, NJ

Wednesday Evenings, March 14, 1990, 7:30-9:00 pm
for four weeks

TEMPLE EMANU-EL, LIVINGSTON, NJ

Fee: \$75 per couple, \$50 single for the series

To register call the Temple Office or UAHC Outreach, 1 Kalisa Way, Suite 104, Paramus, NJ 07652, (201) 599-0080. Please make checks payable to UAHC Outreach.

F.Y.I.

Bar/Bat Mitzvah Dates

If your son or daughter was born in 1979, you should have received a letter from the Temple office concerning your child's simcha. If you have any questions please call Roz Glickman at 768-3307 or Marge Gilmore at the Temple office 768-5112.

Yahrzeits

It is a Jewish tradition to honor the departed by reciting Kaddish in a public service.

Temple Beth El continues to serve its members by sending a reminder notice to members two weeks before Kaddish should be read in memory of a dearly departed loved one.

If you are not receiving such a notice and would like to, call the Temple office with the name of the departed and the date of death. Either the Hebrew or English date can be observed.

Beth El Cemetery Plots

Temple Beth El invites your inquiries regarding availability of family plots. Plots are increasingly scarce and we have them available for purchase through the congregation's far-sighted planning. We know that it is an emotionally charged responsibility and can therefore best be discharged at a time of "no crisis." For information call Martin Kasden at 767-7626 or Marge Gilmore at the Temple office.

SAY "YES"

Have you ever thought of sending Uniongrams and Goldengrams for occasions other than to express congratulations to B'nai Mitzvah and Confirmation children? Did you know that Uniongrams are warm, personal communications for all occasions? Uniongram cards can be used to welcome the new baby, wish happy anniversary or happy birthday, express engagement or wedding congratulations, send New Year or Chanukah greetings, or to send words of comfort during times of sorrow.

One of the most appropriate yet inexpensive ways to express our thoughtfulness on any occasion is through the purchase of a Uniongram. A Uniongram is a simple greeting card published by the National Federation of Temple Sisterhoods.

Your contribution supports the NFTS Youth, Education and Sisterhood Projects (YES) Fund which provides scholarship assistance for rabbinical students at Hebrew Union College Jewish Institute of Religion, students from Israel and more than 20 countries to serve as spiritual leaders of progressive congregations, support for high school and college age youth activities of the Union of American Hebrew Congregations and special and innovative projects of religious educators and leadership development.

There is hardly an individual who writes less than a dozen messages a year for occasions of joy or sorrow. Keeping a supply of Uniongrams (\$1.00 each) or Goldengrams (\$2.50 each) on hand ready for use when occasions arise is not only convenient, but aids a vital cause. Uniongrams and Goldengrams may be purchased in the Temple office.

We Want To Serve

One of the responsibilities of a Temple is to console those who are mourning and to visit those who are ill, either at home or in the hospital.

There are times however that the families involved assume that the congregation is aware of their problems when in fact it is not. Please do not hesitate to let us know whenever there has been a loss in your family or someone is ill. It is only through this knowledge that we, in turn, can perform the services that our membership should be accorded.

And don't forget to let us know of happy news...we'd like to share it with our Temple family.

Rabbi Fred Pomerantz

REMEMBER January 5th



All material for the February bulletin must be typed for reproduction and in the Temple office by *January 5th*. NO EXCEPTIONS.

FYI From JFS

Jewish Family Service of Bergen County is pleased to inform you that beginning in January 1990, we will be offering two new discussion groups: one for new parents, and one for intermarried couples.

The new parent group will explore issues such as the effect of the new baby upon the individuals, family responses to the baby and the parents, sharing of affection, changes in life styles.

The intermarried group will discuss issues including family response, children's religious identity, celebration of religious holidays.

Each group will be led by Ellen Estrin, C.S.W., bi-monthly on Thursday evenings at 7:00 p.m. at J.F.S. in Hackensack. A modest fee of \$15.00 per couple, per session will be charged.

We hope that you will help us provide this important service to the community by informing your congregants of these groups. Young couple groups may be most responsive.

If you require further information, please contact me at 488-8340.

Arnold Mendelson, ACSW
Executive Director

Y CAMPS OF SUMMER 90

The camps at the YM-YWHA of Bergen County offer more exciting choices this summer than ever before

Specialty Camp (K-6th grade) Sports•Creative Arts
Teens Going Places (grades 7,8,9)
(Day-long Adventure + 5-day Trips)

INFORMATION MEETINGS

Sunday, January 7 - 1:30 pm
Wednesday, January 10 - 7:30 pm
Monday, January 22 - 7:30 pm

For Camp Brochure & Membership Information
Call today (201) 666-6610



YM-YWHA of Bergen County,
605 Pascack Road, Washington Township, NJ 07675

Did You Know?

CHARLES LEHMANN is Treasurer of the World Union for Progressive Judaism.

MARTIN SHELZER is Asst. Sec. & North American Director of the World Union.

MIM KRIEGER is a Trustee of the National Federation of Temple Sisterhoods.

Perpetual Remembrance

*To Remember is to Give Rebirth to a Life,
A Life Gone but Forever with You.
Life continues....*

You can obtain a handsome engraved memorial plaque for a beloved family member. The plaque would have a place of honor on the bronze memorial tablets in our Temple's Sanctuary. You have the choice of observing Kaddish either on the English calendar anniversary date or the Hebrew calendar anniversary date and you will be notified in advance of the date. I can not think of a nicer way to remember.

The plaque takes approximately two months to be created. When it arrives you will be notified.

We/I would like to order a Memorial Plaque with the following information placed on it: (maximum of 23 spaces per line are permitted).

Name of
Deceased _____

Relationship to
Temple Member _____

English
Date of Birth _____

Hebrew Date of Death _____
Before or After Sundown

Please allow 6-8 weeks for delivery.

MAIL TO:
Gail R. Earman
Temple Beth El
221 Schraalenburgh Road
Closter, NJ 07624

Enclosed is payment in full, \$300.00 _____

Name _____

Address _____

Telephone _____

Contributions

GENERAL FUND

In honor of Audrey Pekelney, by her mother, Gwen Goldman.

HOLOCAUST MEMORIAL FUND

In memory of Alexander Kroo, father of Tamara Birns by Cheri and Charles Bloom.

JEWISH ENRICHMENT FUND

In memory of Sylvia Misrock, by Mr. & Mrs. Solomon Weinstein.

In honor of Board Meeting ending before 10:00 p.m. by Marty Kasdan.

LIBRARY FUND

In honor of Steven's birthday, by Mr. & Mrs. Jordan Kroff.

In honor of Benjamin's birthday, by Dr. & Mrs. Charles Herbstman.

In honor of the birth of their grandson, Matthew by Sydelle & Carl Schechter.

In honor of Mimi & Chuck Kassel by Shirley & Ted Lazarus.

In memory of Bee Blecher, mother of Joyce Reider by Shirley & Ted Lazarus.

In honor of Matthew's birthday, by Dr. & Mrs. Robert Ein.

In honor of Amanda's birthday, by Judith & Alan Ferher.

In memory of Fred Katz, father of Lucille Sorkow, and in memory of Marian Vatske, sister of Lucille Sorkow, by Leah & Sy Karpen.

PRAYERBOOK FUND

In honor of the naming of Ellen Weinstein by Judy Sussmann.

HERB SUSSMANN FUND

In memory of Herb Sussmann, by Ruth Barbas.

CONGRATULATIONS

To Esther & Paul Baker on the marriage of the son, Mitch to Terry Bennett.

To Marilyn & Martin London the birth of their granddaughter, Sarah.

To Rita & Richard Niederhoffer on the engagement of their daughter, Deborah to Kenneth Herz.

CONDOLENCES

To Lucille Sorkow on the death of her father, Fred Katz and her sister, Marian Vatske.

To Rachelle Harz, on the death of her grandmother, Bertha Minkowitz.

To Edward Gottlieb on the death of his mother, Frieda Gottlieb.

GET WELL

To Mitchell Freeman.

To Phil Silverstein.

RABBI'S DISCRETIONARY FUND

Robert Dank, in memory of Bette Dank.

Paul & Rosalie Fried.

Leonard Samet in memory of Irma Samet.

Howard & Corinne Weber in memory of Lillian Weber.

Rita & Hal Heffler in memory of Sadie Rosenberg.

Mary Sue & Richard Ehrenberg.


Paul & Esther Baker in honor of the marriage of Mitchell & Terry Bennett.

BRING IN A MEMBER

JOIN OUR MEETINGS

JANUARY 1990 - TEVET-SHEVAT 5750

SUNDAY	MONDAY	TUESDAY	WEDNESDAY	THURSDAY	FRIDAY	SATURDAY
DECEMBER S M T W T F S 1 2 3 4 5 6 7 8 9 10 11 12 13 14 15 16 17 18 19 20 21 22 23 24 25 26 27 28 29 30	1 4 TEVET	2 5 TEVET Youth Committee 8:00 pm	3 6 TEVET	4 7 TEVET Adult Ed 8:00 pm Ritual 8:15 pm	5 8 TEVET Shabbat Service 8:15 pm	6 9 TEVET 10:30 am Bar Mitzvah Craig Garber JFTY Homecoming-out of Temple 9-12 pm
7 10 TEVET BESY Board 7:00 pm FAST DAY	8 11 TEVET	9 12 TEVET Sisterhood Board 8:00 pm	10 13 TEVET	11 14 TEVET	12 15 TEVET Family Service 8:00 pm 6th Grade Shabbat Dinner 6:30 pm BENJY/BESY Ski Weekend	13 16 TEVET B/M Workshop Meeting Room Minyan & Torah Study 10:30 am Men's Club 7-12 pm
14 17 TEVET Adult Education 10:00 am	15 18 TEVET	16 19 TEVET	17 20 TEVET	18 21 TEVET Bd. of Ed 8:00 pm	19 22 TEVET Shabbat Service 8:15 pm Rabbi Syme Adult Ed	20 23 TEVET 10:30 am Bas Mitzvah Melissa Wymbs Tot Shabbat 9:30-10:00 am
21 24 TEVET B-B/M Brunch 10-12 am	22 25 TEVET BENJY Pizza 6:00 pm Men's Club 7:00 pm	23 26 TEVET Nursery Board 7:30 pm	24 27 TEVET	25 28 TEVET Board of Trustees 7:45 pm	26 29 TEVET Shabbat Service 8:15 pm	27 SHEVAT 10:30 am Bar Mitzvah Matthew Wind
28 2 SHEVAT	29 3 SHEVAT	30 4 SHEVAT	31 5 SHEVAT			FEBRUARY S M T W T F S 1 2 3 4 5 6 7 8 9 10 11 12 13 14 15 16 17 18 19 20 21 22 23 24 25 26 27 28

MORSE'S CLOSTER PHARMACY, INC. <i>Your Community Health Center</i> Open Sundays till 2 William Zipse, R.P. 768-1368 226 Closter Dock Road, Closter, N.J.	INVITATIONS, STATIONERY AVAILABLE Stationery, birth announcements, and invitations (wedding, Bar and Bat Mitzvah) are available at a discount through Sisterhood. Nancy Pivar 767-8631 Laura Chason 573-0125 Ann Rogoff 573-1330	ATTEND MEETINGS SUPPORT FUNCTIONS
EVAN T. KRIEGER, C.L.U., Ch.F.C. Office: 489-5600 Home: 385-3182 Group, Pension and IRA Plans Financial and Estate Planning Life and Health Insurance Tax Shelters	Complete Home Furnishings <i>Leonard Sinowitz</i> Vice President BERGEN FURNITURE Bergen Upholstery & Furniture Co., Inc. Manufacturers of Fine Upholstered Furniture Since 1929 283 Main St., Hackensack, NJ 07601 489-0555	<i>Software City</i> Bergenfield, Fairlawn, Midland Park, Montvale, Ridgefield, Teaneck
VIDECO Video-Taping Services <i>Wedding-Bar Mitzvahs-Special Occasions</i> <i>Superior Quality</i> P.O. Box 7401 N. Bergen, N.J. 07047 (201) 869-6715 Rich & Chris Tamian	robert schoem's menorah chapel robert schoem — Past President Jewish Funeral Directors of America main chapel seats 500 — parking for 200 cars on premises w-150 state highway no. 4, paramus	 843-9090



WEDDINGS • VIDEO
BAR/BAT-MITZVAHS
 Family & Children's Portraits
STUDIO AT DEMAREST POND
(201) 784-0210

(201) 837-3322 (201) 664-4208
JOSEPH POMERANTZ, D.D.S.
Diplomate, American Board of Orthodontics
 149 W. Englewood Ave., Teaneck, N.J.
 180 Old Tappan Rd., Old Tappan, N.J.

**GUTTERMAN
MUSICANT**

JEWISH FUNERAL DIRECTORS
 FUNERALS CONDUCTED
 FROM CHAPELS THROUGHOUT
 METROPOLITAN NEW YORK
 & FLORIDA

*(Special consideration
 given to Temple
 members and
 their families)*

**BERGEN COUNTY
HACKENSACK, NJ 07601**
 Passaic St. at Park St.
 Arthur R. Musicant, Mgr.
 (201) 489-3800

**HUDSON COUNTY
JERSEY CITY, NJ 07305**
 Kennedy Blvd. at Audubon Ave.
 Arthur R. Musicant, Mgr.
 (201) 433-6500

DIRECT LINES: (212) 794-8900 New York City 1-800-522-0588 - Florida

This ad space is reserved for you -
Call
Mark Hackmeyer
666-0049
or the Temple office

PARTIES & PRESENTS

*Discounted Custom Invitations
 Stationery and Announcements*

219 Closter Dock Road, Closter — 784-0854

Party Planning, Centerpieces, Favors, Etc.

Barbara Fishman

Bernice Slotnick

THE PENNYWATCHER'S SHOP

137 Oakland Avenue, Closter, N.J.
 767-1977

Gifts, Drugs, Beauty Items, Kodak Film & Developing
All At Discount Prices!

Frieda Wells

(201) 767-5830

BUDGET PRINTING CENTER
 LOW COST QUALITY PRINTING

Bill Laura, Mgr.

316 Harrington Ave.
 Closter, N.J. 07624

*PATRONIZE
 OUR ADVERTISERS*

JOIN US!



**ONE FREE CALL TO A
 GUARANTEED HIGHER
 PSAT/SAT Score**

Educational Services Center

- Small groups • Improve 100,150,200+ points
- Low tuition • Powerful test-taking tips

Discounts to Members
 Our 9th year at Beth El

1-800-762-8378

**NEW MEMBERS
 WELCOME**

**LANDESMAN
 Travel Service**

(Established 1962)

475 Cedar Lane, Teaneck, N.J. 07666—836-4200
 6-8 Washington St., Tenafly, N.J. — 567-5800

Arthur L. Ruderman, D.D.S., P.A.
Richard J. Ruderman, D.M.D.

500 Piermont Road, Closter, N.J. 07624
 201 - 768-3513

By Appointment

Tues. and Thurs. 8-8 pm - Mon. and Fri. 8-4:30 pm
 Sat. 8-12 pm

**BETTY
 HERSHAN
 REALTORS**

BETTY HERSHAN
 Realtor/Broker

163 Terrace St., Haworth, NJ 07641

201-384-0110

Weight Watchers

Meets at Temple Beth El

9:30 am 5:15 pm 6:45 pm

For more information, please call:
 (201) 265-3900

HAROLD D. SINGER, D.D.S.

Orthodontist

Adults and Children

384-4440

Closter

Bergenfield

*Patronize
 Our
 Advertisers*

LOUISE BOYARSKY, Sales Representative
 Million Dollar Club

THE PRUDENTIAL STEWART REALTY

Off: (201) 768-2442 Res: (201) 784-0235
 570 Piermont Rd., Closter Commons
 Closter, NJ

**MIDLANTIC
 North**

Midlantic National Bank/North

Executive Offices:

One Garret Mountain Plaza, West Paterson
 (201) 881-5000.

Offices in Bergen, Essex, Hudson, Morris and Passaic counties.
 Member FDIC

FAIRLAWN DESIGN CENTER

Manufacturers of
 Fine Custom Upholstery and Draperies

Rita Niederhoffer

(201) 440-2020

48 Moonachie Ave., Hackensack, N.J.

Sal Cenicola's

HAWORTH BEAUTY SALON

Pedicures & Facials

149 Terrace Street, Haworth, N.J. 07641
 384-5656

Open til 9 Thursday and Friday

SCHLOTT

Member Million Dollar Sales Club

Closter Dock Road, Alpine, N.J. 07620

Roslyn M. Lampert, Sales Representative

Bus: (201) 767-0550 Res: (914) 365-2527

"Call A Friend"

TOYS, COSMETICS, JEWELRY, APPAREL
 PARTY FAVORS, BAR-BAT MITZVAH FAVORS
 DISCOUNTED

EVERYTHING +

CARICATURES FOR PARTIES
 ALL HAIR ACCESSORIES, GIFT ITEMS
 NOVELTIES, ETC.

JOAN — 768-8942



Charge Accounts

Prompt Delivery

PLAZA PHARMACY

Barton's Chocolates

63 Closter Plaza Shopping Center
 Closter, N.J. 07624

(201) 768-6655

B.J. Levine, R.P.

BOULEVARD-RIVERSIDE — "A Guardian Chapel"

Brooklyn
 312 Coney Island Ave.
 718-633-0400

Long Island
 1450 Broadway
 Hewlett
 516-295-3100

Queens
 114-03 Queens Blvd.
 (at 76 Rd.) Forest Hills
 718-854-2000

Manhattan
 178 West 76 St.
 212-362-3600

Westchester
 21 West Broad St.
 Mt. Vernon
 914-664-6800

Florida: Dade County - 305-947-6868 — Broward County - 305-947-6868 — Palm Beach County - 305-683-2726


Serving the Greater Metropolitan Area and Florida

Directors: Michael A. Hyman-Lewis Smith-Stanley Misikoff-Norman I. Shapiro-Bernard Simon-Martin Kasdan-Haskell Meyers-George Smith

TENAKILL PRESS
FULL SERVICE PRINTING
 Commercial & Social
768-3800
 251 Closter Dock Road, Closter

Henry Morris 201 - 768-3577
Automatic Doors of Bergen County
 Automatic Garage Door Operators
 Sales - Service - Installation
 198 Walnut St., Northvale, N.J. 07647
*Free Gift on All Installed Automatic Garage Door Operators
 With This Ad*

Hamrahi's
Beautiful Women's Clothing
 Cresskill 871-4444

(201) 567-3099

A&M PASTRIES
 INC.
 66 Union Avenue
 Cresskill, New Jersey 07626

Dr. Kenneth Gasworth
 OPTOMETRIST
Dr. Martin F. Schulman
 OPHTHALMOLOGIST
768 20/20
 520 DURIE AVE. CLOSTER, N.J.

Laura


201 - 768-0606
ALAN B. KATZMAN, D.M.D., F.A.G.D.
Family & Restorative Dentistry
 458 Tappan Rd., Northvale, N.J. 07647
 Office Hours by Appt.
 Evening & Weekend Hours Available

Ladies Tennis & Golf
ACTION WEAR OUTLET
 85 Carver Ave., Westwood, N.J. 07675
 666-3520
Dolores & Dick Friend

*Superb food and casual
 elegance is our style. Be it an intimate affair or
 grand event. let Laura custom plan your wedding
 bar or bat mitzvah with creativity and expertise.*
Laura Chersky, proprietress. (914) 359-1110

THE WINE AND WHISKEY BARREL
 7 Broad Street, Norwood, N.J.
 (201) 768-1551

ACCENT ON VIDEO
Video Movies
Rentals and Sales
Video Equipment and Accessories
 256 Closter Dock Rd., Closter, N.J.
 (201) 767-8106 *Open 7 Days*

JOHN A. RUBINSTEIN, D.M.D.
 General Dentistry
ANNE SCHULTZ, D.D.S.
 Pediatric Dentistry
 466 Old Hook Road Emerson, NJ 07630
 475 Fifth Avenue New York, NY 10017
 201-261-7755 212-725-2950

TEMPLE BETH EL
 of Northern Valley
 221 Schraalenburgh Road
 Closter, New Jersey 07624

Diet 
Center
 of Closter/Norwood

Phone 688-5595 - Home
 Phone 399-906e - Bus.
ELSIE'S EXCLUSIVE CATERING
 by
Elsie and Edward Gawryluk
 1155-57 Stuyvesant Avenue, Irvington, N.J. 07111

Rabbi Fredric S. Pomerantz
 Cantor Shlomo Bar-Nissim
 President Jan E. Chason
 Bulletin Editors Carol Pomerantz
 Doris Mortman
 Office 768-5112
 Education Director Evelyn Rotstein
 Religious School Phone 768-2195
 Nursery School Director Jeanne Schreiber
 Nursery Phone 768-3726
 Parenting Director Hope Eliasof
 Youth Director Sherry Newman

Over 2000 Diet Centers across the country have successful results. This program is based on sound nutrition and daily, one on one, counseling with a diet counselor.

- Lose up to 10 lbs. in 2 weeks
- Lose up to 17-25 lbs. in 6 weeks
- Call today for a consultation

16 Broad Street
 Norwood, N.J. 07648
 (corner Broad St. & Blanche Ave.)

Amanda Strauss - 767-5887

ATTEND
MEETINGS

TEMPLE BETH EL
 OF Northern Valley
 221 Schraalenburgh Road
 Closter, New Jersey 07624

Non-Profit Org.
 U.S. POSTAGE
PAID
 Closter, N.J.
 07624
 Permit No. 12

T44
 HEBREW UNION COLLEGE LIBRARY
 3103 CLIFTON AVE
 CINCINNATI OHIO 45220