

Send to:

Library HUC-JIR  
3101 Clifton Avenue  
Cincinnati, OH 45220

sey 07960

*An Affiliate of the Union of American Hebrew Congregations*

*May, 1991*

## Giving and Receiving Torah

If you ever, in your spare moments, have a desire to know the meaning of Jewish existence, just take a look at the blessings before and after the reading of the Torah. There, in a nutshell, you will find what it is all about:

"Blessed are you, Eternal our God, Ruler of time and space, who has chosen us from all people by giving us the Torah."

Are we chosen because of what wonderful people we are? Hardly. According to this bracha (blessing), Jewish choiceness is a function of our acceptance of Torah, of study and of living an identifiably Jewish life.

What this means is that Jewish education is an integral part of the life of every serious Jew, no matter what the age. Jewish education is not pediatric. Torah is for all ages!

Which is why we are so proud of the students of all ages who are, in one form or another, studying - and hence receiving - Torah:

We are proud of our confirmands. On the morning of Shavuot (May 19), the holiday which commemorates the receiving of the Torah by the Jewish People at Mt. Sinai, these young people will symbolically stand at their own Mt. Sinai. There they will link arms with generations past who have accepted Torah and the Jewish obligation to worship and study. Confirmation is a beautiful and inspiring experience for the whole congregation.

We are proud of our High School graduate. She has gone the extra mile in her commitment to Jewish study. Those attending the Graduation Shabbat (May 17) will be most enriched.

We are proud of our Adult Education students. Coming from vastly differing backgrounds with various motivations, they gather on a regular basis in the various classes and seminars to learn and to grow, to apply the wisdom of our heritage to their lives and to feel the camaraderie of a community linked by Torah.

And we are proud of our teachers whom we will honor at Family Shabbat on May 3. It is through the regular efforts of all these devoted individuals that Torah is passed on and received by new learners. They are truly God's coworkers in the giving and receiving of Torah!

The blessing after the reading of the Torah thanks God for

(Continued on page 2)

## Schedule of Services

Friday, May 3rd 7:30 p.m.

### Family Service

Led by students in our Fourth Grade

Saturday, May 4th 11:00 a.m.

### Shabbat Morning Service

Jaime Ackerman will become a Bat Mitzvah

Friday, May 10th 8:00 p.m.

### Shabbat Evening Service

Saturday, May 11th 11:00 a.m.

### Shabbat Morning Service

Lindsey Bogdan will become a Bat Mitzvah

Friday, May 17th 7:15 p.m.

### Consecration of Confirmands

8:00 p.m.

### ORIM Graduation

Saturday, May 18th 11:00 a.m.

### Shabbat Morning Service

David Cohen will become a Bar Mitzvah

Sunday, May 19th 11:00 a.m.

### Confirmation

Friday, May 24th 8:00 p.m.

### Shabbat Evening Service

Friday, May 31st 8:00 p.m.

### Renaissance Shabbat Service

having given us a Torah of truth, "thereby planting within us eternal life." The life (not mere survival) of the Jewish people depends on each of us nurturing and tending that very special "seed of eternity," our Torah. Baruch Atah Adonai, Notayn ha-Torah - Blessed are You, Eternal One, who is continually giving Torah. And blessed are those who continually receive Torah as well. They bring blessing to us all.

-DBR



## **BEGINNINGS - ENDINGS - RECOGNITION**

May is uniquely a month of beginnings and of endings for our school. Join us on Friday evening, May 3rd at 7:30 PM for Shabbat Services as our Fourth Grade students lead us in the service. This is the culmination of their first year of Prayerbook Hebrew and both they and their parents invite you to participate in this special event in their lives. Prior to the service, students and their families will participate in a Shabbat Dinner to be held in the Social Hall. A copy of GATES OF PRAYER with the name of each student imprinted on the cover, will be presented at that time during a special ceremony.

Teacher Recognition Sabbath will be incorporated in this special evening. We will honor our teachers at that time. Please join us in paying tribute to those dedicated persons who give of themselves so generously as they work to educate our children.

Confirmation will take place on Sunday morning May 19th at 11:00 AM. Fifteen young people of our congregation will stand before you to affirm their faith in the religion of Israel and in God; a decision based upon their OWN choice not merely the fact of their birth.

A special evening has been planned for Friday evening, May 17th. Confirmands will be consecrated at a special service preceding congregational worship. As part of the Shabbat Service that evening, Johannah Henson will become the first graduate of ORIM, our new post-Confirmation program. We are proud of the accomplishments of all of our students.

## **Social Action**

We are conducting this season's last food drive, April 28 to May 5. Especially needed for the summer months are canned juice, peanut butter, jelly, tuna fish and crackers.

Temple members and members of the Morristown area African-American community are participating in a dialogue on mutual concerns. Call Connie Rubin for further information.

If you are interested in helping the Temple plan its community activities, call Connie Rubin at 267-6553.

## **Sisterhood**

April 1st - Meeting of the Nominating committee to determine next year's slate of officers. We will meet at the home of Debbie Ross. All are welcome to attend.

May 7th - Save the Date! A combined meeting of Sisterhoods from the Morristown Jewish Center and Temple B'nai Or entitled: "A Butcher, A Baker, A Candlestick Maker...A Rabbi? Our speakers will be Rabbi Stephanie Dickstein from the Conservative Synagogue of Hoboken and our own Rabbi Susan Warshell. These women Rabbis will discuss what motivated them to join the rabbinate, and will address questions that you may wish to ask. Dessert to follow.

Official voting of our new slate of officers will take place at the regular Sisterhood meeting.

Attention all King's shoppers: King's Supermarkets are now accepting scrip in payment for groceries. What this means is that you can purchase scrip through Sisterhood, use it to pay for groceries, and make a donation to Sisterhood at the same time. You purchase the scrip at face value, but Sisterhood makes a 5% profit. It is available in \$20 denominations. The scrip will be available at all Sisterhood and Men's Club events. Sisterhood will provide free home delivery for purchases of \$300 or more. For more information or to purchase scrip, call Patti Schreiber at 984-0137 or Lynn Gannet at 898-9252.

**Cradle Roll** - On Sat., May 11, members of the Cradle Roll are invited to a Shabbat Party. It will be held from 12:30 to 2 pm in the Multi-Purpose Room. There will be crafts, songs, games and food. Please respond to Temple office at 539-4539. This party is open to all children from 2 years old through their pre-K year.

**Me and My Kid** - This group will be sponsoring a parent/child evening on Tuesday, May 28 at 7 pm. The evening's activity will be making challah. Children and their parents will make challah and take it home to bake. Our special presenter for this enticing evening will be Yochavid Hirsch from the King's Cooking School. Also featured this night will be a "Kid's Komer" offering

(continued on Page 3)

## **Temple B'nai Or**

(201) 539-4539

An Affiliate of the Union of  
American Hebrew Congregations

Rabbis	Donald B. Rossoff Susan G. Warshell
Rabbi Emeritus	Z. David Levy
	*****
President	Marc Allen
Sisterhood President	Debbie Ross
Men's Club President	Stewart Ginsberg
Editor	Catherine Litwin
	*****
Administrator	Janis Wyatt
Director of Education	Elaine B. Gaidemak
Director of Music	Alice Maleski

(Continued from page 2)

stationary, thank you notes and crafts to purchase. For further information or to sign up call Fran Rossoff at 539-2558.

Sunday, May 5 - Temple Gourmet Breakfast, sponsored and cooked by Sisterhood, Men's Club and Renaissance. Joshua Gordon on his cello will highlight the breakfast in the Temple Social Hall at 10 am. If you would like to help cook, call Stewart Ginsberg at 540-1173. RSVP or send check to: Stewart Ginsberg, 194 Franklin St., Morristown, 07960.

**From the President:** I must send some very special thanks out this month to those on the Sisterhood Board who gave out of their own pockets to get our new Scrip Program, chaired by Patti Schreiber, initiated. Such support is too often unheard of. We have some very dedicated and special people committed to Sisterhood and Temple. I also want to thank Dee Ginsburg plus those others who, though not on our Board, said as usual "of course I'll help" when we asked. Amazing!

The "Above and Beyond Award" must go to all those involved with our First Annual Passover Plant Sale, chaired by Fran Rossoff. There were sore ears from telephoning, weak hands from writing notes, and tired jaws from talking this fundraising up. Everyone gave above and beyond, including Rabbi and Fran who put on the final touches at 4 in the morning! Men's Club was also a great support as were the many drivers who spent their Sunday morning roaming North Jersey from Basking Ridge to the Oranges. Thank you all.

Lastly, I want to thank the hard workers involved with our Second Night Seder. Michelle Varga, Susie Schub and Raya Pallington for setting up, Joan Sherman for organizing the reservations and Beth Hyre for a second year of working with the caterer to make our evening very special. Steve Cisco from "In Good Taste" of Millburn catered our seder, lead by Rabbi Rossoff and Rabbi Warshell, with music by Alice. Our tulip centerpieces were donated by Michael and Barbara Ackerman in honor of the Sisterhood Organization.

I feel great pride in all those who volunteer their time and their energies for Sisterhood. Our successes reflect these wonderful people.

Deborah Ross

---

### Rosh Chodesh Circle

Our last gathering for the year will be on Tuesday, May 14th at 7:30 p.m. Our hostess will be Mavra DeRise, 58 Burnham Parkway, Morristown. Please RSVP to Mavra at 539-6735 or Rabbi Warshell at the Temple -539-4539.

In accordance with the Constitution of Temple B'nai Or, the Nominating Committee has submitted the following slate of officers and trustees for presentation at the Annual Congregational Meeting on May 23rd.

### Temple B'nai Or-Board of Trustees

#### 1991-1992 Slate of Officers

President:	Irving Gozonsky
Vice Presidents:	Zackary Fluhr Marc Spurr Deborah Ross
Treasurer:	Vicki Nelson
Financial Secretary:	Joseph Henson
Board Secretary:	Bonnie Ackerman
Trustees (term ending 1994)	Dr. Barry Efros Stewart Ginsberg Phillip Kaufman Dolores Gingold Jack Piermont Donald Piermont Dr. Stephen Leviss Armand Kaplan Mitzi Szerlip
Past Presidents: (term ending 1994)	Fran Stern, Chair Barbara Klein
Nominating Committee: 1991-92	

Respectfully Submitted,

Margot Flowerman,  
Chair  
Fran Stern  
Stewart Ginsberg  
Richard Heyman  
Paul Rosenberg

---

### Soviet Jewry Resettlement

We anticipate that more than twenty unaffiliated families will arrive for resettlement in Morris County. These families require full synagogue adoption to facilitate their adjustment. At this time there are no apartments available in the Morristown area, so we will work with families who are settling in Budd Lake. This means that we will need more volunteers, more household items, more furniture and many hands. Please call the Temple office and volunteer - we need you.

Should you know of any available housing for under \$650 per month (2 bedroom) please contact Fran Stern at 538-2689 or the Temple office. We're waiting to hear from you.

# Renaissance Times

Vol: 2 No: 9

May 1991

## Future Events

**Sunday, May 5** - Gourmet Breakfast, Men's Club, Renaissance, together with Sisterhood. We need a few volunteers to make some blintzes and a quiche. Thursday, May 9 - "Merry Widow" at the Paper Mill Playhouse. Those interested in joining a group for dinner before the show or after for coffee and dessert contact Fred Glickman at 540-1175.

**Friday, May 31** - Renaissance Shabbat Service. If you wish to take part, please call Raya Pallington at 539-1298.

**Sunday, June 2** - Renaissance Pops Concert and breakfast. Please read this two-part announcement carefully to you don't miss out on the cultural feast of the year.

*Part I* - Meet the artists, continental plus breakfast,

10 am Temple B'nai Or Social Hall. Limited to 96 people. Seating can only be guaranteed by reservation and prior payment by May 22. Donation \$3 for members, \$3.50 for non-members. For reservations call Pat Tolkoff, 539-2827, Raya Pallington, 539-1298, or Ted Largman, 539-8855.

*Part II* Musical Program - 11 am Temple Sanctuary. Artists: Anita Gordon, piano, Dr. Lynn Siebert, violin and Rabbi Donald Rossoff, flute.

No charge, open to the congregation.

**Sunday, June 30** (rain date July 7) swim party and covered dish picnic at the home of Charlotte and Jay Abberman. For information and directions call 766-4941.

## Singles' Events

The Morris Area Jewish Singles Group will hold an evening of Israeli Dance on Sunday evening, May 5th, beginning at 7:30 at the Morristown Jewish Center on Speedwell Avenue. If you have never danced Israeli-style, our instructor will show you the ropes. If you are an expert, join with others and do your stuff! The cost of the evening is only \$5.00 per person.

The Steering Committee of our Group will meet at Temple B'nai Or on Wednesday evening, May 15th at 6:00 p.m. Be part of the planning, bring your ideas and we will provide a light supper.

## Weekly Torah Portions

**May 3- 4**

### **Emor Leviticus 21:1 - 24:23**

Following the responsibilities of the Biblical priesthood to remain ritually and morally pure is a description of the Biblical holy days. First among them is the Shabbat. The first of the three Pilgrimage Festivals is Passover, feast of unleavened bread. After Passover are seven weeks of bringing barley offerings (the "Omer"), culminating in the festival of weeks: Shavuot. The third of the three festivals is celebrated at the final harvest by the taking of lulav and etrog, and living in booths: Sukkot. At harvest time we are commanded to give the poor their due. The two nonagricultural Holy Days are also commanded: Rosh Hashana, a day of the sounding of the shofar and Yom Kippur, Day of Atonement, a day of "self-denial and expiation."

**May 10 - 11**

### **Behar-B'chukotai Leviticus 25:1 - 27:34**

In this week's Torah portion are laws concerning economic justice and equality: The Sabbatical year in which the land itself observes a year of rest every seventh year; the Jubilee year every 50 years in which slaves are freed and land is returned to the original tribal owners ("Proclaim liberty throughout the land unto all the inhabitants thereof!"); the command to lend money to the needy without interest.

**May 17 - 18**

### **Bamidbar Numbers 1:1 - 4:20**

The fourth book of the Torah, Bamidbar (lit. "In the wilderness"), begins with a census being taken of the Israelites, hence the English title of the book, Numbers. The tribes are assigned their encampment positions for the journey to the land of Israel. At the center of the camp will always be the Tabernacle, the physical token of God's presence in their midst. The Levitical families are given their individual responsibilities in the transporting and functioning of the Tabernacle.

**May 24-25**

### **Naso Numbers 4:21 - 7:89**

The initiation of the Tabernacle continues with the census of the Levitical families and a description of their ritual responsibilities. Laws concerning Nazirite vows and the suspected adulteress are also given. The sons of Aaron are instructed to pronounce the "Priestly Benediction" over the people: "May the Lord bless you and keep you..."



# Notes from the Board of Trustees

Things are tough all over. Revenue shortfalls, cost increases, deficits, cutbacks. Unfortunately, Temple B'nai Or is no exception.

Financial matters have taken much of the Board's time over the past several months. We certainly had lots of opinions represented at the various meetings - ad hoc and regular gatherings, formal and informal talks, conversations with UAHC officials and leaders from other temples, open congregational groups and closed executive sessions. But, after all the opinions are aired and argued, decisions have to be made.

The Board has decided on a 3-stage plan. First, the accumulated deficit has to be eliminated. As we explained a number of times, most recently in last month's letter, unexpectedly high expenditures combined with lower than anticipated income has put us in an uncomfortable deficit position. Painful and unwelcome though we know it is, a 10% dues assessment to all members this year and next is needed to eliminate that red ink.

Second, we have recognized for some time that we need to re-evaluate our dues program. Our Fair Share system has gone unrevised for perhaps as long as ten years. The dues categories and suggested income ranges are antiquated. In most cases, members are in whatever dues ranges they selected when they first joined Temple; they have simply never been asked to update their commitment. Our new dues structure is nothing more than an attempt to catch up and correct the accumulated inequities and anomalies.

Though it was debated extensively, the basic nature of our dues plan remains what it has always been: a self-selected or "honor system" Fair Share structure, where members choose a dues amount they consider appropriate for their financial situation from suggested categories and corresponding income ranges. (Alternatives include: flat-rate dues amounts identical for all members; categories of dues amounts based on circumstances other than income - like age, marital status, single parent, non-parent, etc., or an enforced fair-share system, with dues tied explicitly to income and with some form of proof of income required.)

Though we tried to keep the plan as simple as possible, there have been some questions about interpretations or specific circumstances. For example, if your current dues amount is somewhere in between the suggested categories, what should you do? Obviously, if possible, we hope you will stretch to reach the next higher level. If that can't be done, it's all right to stay at your current level, or raise it only slightly, rather than reduce your commitment to a lower amount. In other words, a "write-in" amount is

acceptable even though we deliberately didn't encourage it. Another question is what about special categories - seniors, single parents, etc? The Board feels that ability to pay should be the determining factor, not unrelated other circumstances. As always, provisions exist for reduced fees for those who need it; financial need should not (and does not) prevent anyone from being a full-fledged member of B'nai Or.

As for the connection between the dues amounts and income categories, pragmatism, arithmetic, and existing dues ranges certainly were factors in our decisions about these categories. But we also stayed consistent with UAHC suggestions and other Temples' dues ranges. The UAHC suggest that 1.5 to 2% of gross family income is an appropriate expectation for dues. Our ranges generally fit that guideline, and we're confident that if all our members contribute within that guideline our financial needs will be met.

For those of you who haven't yet returned your dues form for next year we urge you to do so immediately. We can't plan without reliable information about total congregational dues income. If you have other questions, please call Janis in the Temple Office or the Financial Secretary.

The third part of our financial plan is, of course, to work hard to guard against future deficits. Unfortunately, balancing our budgets is not easy. As with governments and other institutions, we find that most of our expenses seem unavoidable. Fair and competitive salaries and benefits must be provided to the professionals we depend on to provide Temple's many services. We're maintaining an aging building, and it is foolhardy to leave leaky roofs, faltering heating systems, and deteriorating grounds unattended. Cuts or cost avoidances, in other words, are often impossible or counter-productive. Nevertheless, we have and will continue to make many expense-reduction efforts. Some will hurt; but we try, as they say, to cut fat and not muscle, and we hope that any pain will be temporary.

On the income side, of course, we'll continue to do all we can. In addition to standard dues and fees, we welcome any help we can get with the various alternatives: fund raising, especially if it reaches beyond our membership; Temple endowment, which, if substantial, could make a real difference in the future; or any other ideas for how to bring in more.

Our Temple is not and should not be primarily about money. Unfortunately, reality makes it important at times. We hope that the Board's efforts, combined with member's understanding and cooperation, will soon enable us to put money matters off to the side - where they belong.

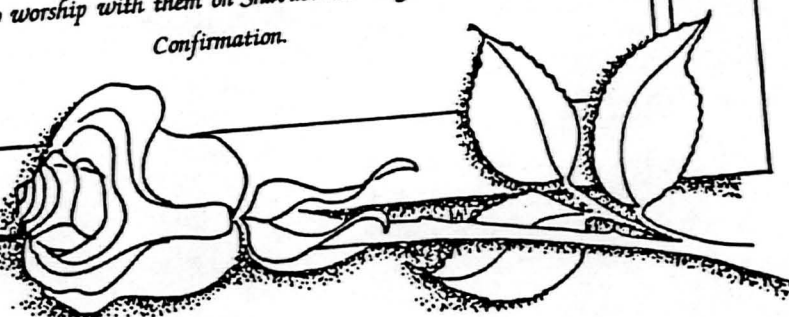
## *The Confirmation Class of Temple B'nai Or*

*Andrea Stacy Akivis  
Debbie S. Cohen  
Jonathan L. Cohen  
Meagan Heather Gannet  
Tamara Jill Glucksmann  
Benjamin Bradford Francis Henson  
Sarah Beth Kaufman*

*Tara Melnick  
Vanessa Melnick  
Alyssa Pam Miller  
Rebecca Elizabeth Nagel  
Sarah Abigail Nelson  
Daryl J. Rubinstein  
Stephen Jay Steinlight  
Marc Efram Sukoneck*

*invites you to worship with them on Shavuot Morning as they celebrate  
Confirmation.*

*May 19, 1991 at 11:00 a.m.  
6 Sivan 5751*



### **Caring Community News**

Did you know that because of the current recession Jewish Vocational Services is trying to find jobs for our Jewish unemployed? If you need employees, please contact them for referrals. The Caring Community is also trying to help our own congregants in need of permanent employment.

- 1) Medical Assistant/Phlebotomist with three years experience is looking for a full-time position with growth opportunity.
- 2) CPA with MBA and 25 years experience in public and private accounting is seeking a job as a comptroller.

If you think you may be able to hire these people or assist them with leads, please call Phyllis Feinblum at 539-5435.

Some of our seniors who do not drive would like to attend Shabbat services on a regular basis. If you could assist them by providing transportation you would be performing a great Mitzvah. If you can help, please call Maureen at the Temple office to put your name on the list. Also, if you are a senior in need of transportation, call Maureen.

One of the most important Mitzvot you can perform is to lead a Minyan at a house of mourning. If you are comfortable with prayer book Hebrew, you can become a Minyan leader with only a little additional training. We are seeking volunteers to help our rabbinical staff meet the needs within our Temple family. Training will take place in July. To participate, please call Phyllis Feinblum at 539-5435.

The Caring Community committee would like to thank Don Piermont for his assistance in a project that has made a tremendous difference in the life of one of our congregants. Thank you Don!

### **Jewish Vocational Service**

The Employer's Resource for Personnel, Two Departments To Serve You.

Jewish Vocational Service (JVS) is a beneficiary agency of the United Jewish Federation of MetroWest. For the past fifty years, JVS has provided career counseling and job placement services to Jewish residents of MetroWest, which now encompasses Essex, Morris, Sussex and Warren counties, and skilled personnel to businesses throughout the state.

The Career Placement Center of JVS has a pool of highly qualified candidates from the community with backgrounds in the areas of sales, marketing, science, technology, social services and operations ranging from office support to executive management.

In addition, the JVS Emigre Resettlement Center places Soviet emigres and refugees from other countries in a variety of positions ranging from Ph.D. level scientists and programmers to machinists, assemblers and order pickers.

JVS professionals will meet with you to explore your personnel needs, pre-screen applicants for you, secure references and provide follow-through...all at no cost.

We look forward to an opportunity to meet with you to explain our free employment services at greater length. In you would like an appointment or have any questions, please call one of our professional staff in the Career Placement Center at 674- 6330, or Caren Ford in the Resettlement Center at 674-3672.

**Temple B'nai Or**

**Wednesday night**

**Adult Jewish Academy**

**MAY SCHEDULE**

**7:30 P.M. - FINDING GOD**

MAY 8 - Heschel and Buber

MAY 15 - Jewish Humanism

MAY 22 - God and the Holocaust

MAY 29 - Finding Ourselves

**8:30 P.M. - Current Topics**

"Le Chambon" - Where Christians saved Jews

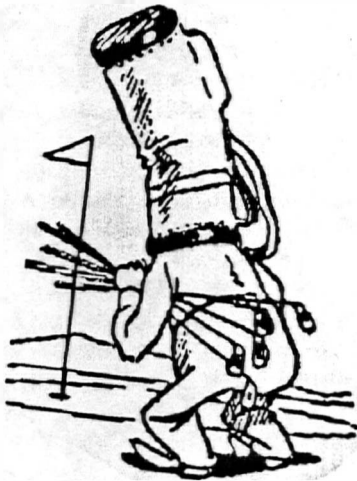
MAY 8 - "Le Chambon" - view video

MAY 15 - "Le Chambon" - discussion

MAY 22 - The Ethics of War and Peace

MAY 29 - Open discussion on issues of the day

*Everyone welcome!*



# CALLING ALL GOLFERS

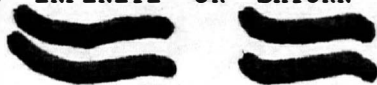


PLAY GOLF WITH FELLOW TEMPLE MEMBERS AND FRIENDS OF THE TEMPLE  
AT BEAUTIFUL FOX HOLLOW GOLF CLUB

RELAX AND HAVE FUN ALL GOLFING ABILITIES WELCOME

STAY FOR DINNER WIN TERRIFIC DOOR PRIZES AND RAFFLE PRIZES

WIN A NEW INFINITI OR SATURN AUTOMOBILE WITH A LUCKY HOLE-IN-ONE



\$95 - GOLF AND DINNER

\$40 - DINNER ONLY

TUESDAY, JUNE 11

contact Temple office

must reply by June 3 ( EARLY BIRDS -  
reply by May 15 and qualify for a  
special prize giveaway

P.S. Community merchants and restaurants  
have donated lots of door and  
raffle prizes. = Come on out  
and win some !!



## MELISSA NEIER YOUTH SCHOLARSHIP FUND ESTABLISHED

In order to perpetuate the values and life of Miss Melissa Neier, a young woman who grew up at Temple B'nai Or, Leon and Joy Kurland have established a Youth Scholarship Fund in her memory. This scholarship is to be used to support the participation of the youth of our congregation in the summer camp programs of the Reform movement, programs which had been especially meaningful to Melissa during her high school years.

The Melissa Neier Fund will be added to the list of regular funds of our Temple and is a wonderful vehicle by which to commemorate a special occasion or to honor the memory of a dear one.

### In Memoriam

When cherished ties are broken, our burden of sadness is made lighter by the sympathy and comfort of friends. The congregation extends its sympathy to the family of:

Beatrice Holzer  
Aunt of Phyllis Feinblum

### CARING COMMUNITY FUND

Speedy Recovery to  
Shari Leviss

Alise, Marty and Samantha Ford

In honor of  
the naming of Ilana Gene

\*Sheryl and Gregory Maccia

In memory of  
Dora Sherman

Joy and Leon Kurland

### DEFICIT REDUCTION FUND

In memory of  
Tillie Bernstein

Jerry Bernstein

### HOMELESS FUND

In honor of  
Rhoda and Jay Dayan

Shari and Steve Leviss

The grandson of Anita and Lou Gordon

Susan and Edward Goldstein  
Dr. Steve Leviss

Speedy recovery to  
Shari Leviss

Judy and Marc Allen

In memory of  
Zelda Israel

Susan and Edward Goldstein

Our loved ones

Betty Sesnowitz

### JASON LEWIS FUND

In honor of  
Justin Stone's birthday

Carole and Ed Lidz

Walter and Babette's new grandson, David  
naming of Samantha Rose Ford  
birth of Victoria Wolf Lewis

Elaine and Sy Lewis

In memory of  
Zelda Israel

Gloria and Alan Behar and family  
Eve and Owen Lewis

David Bergner

Eve and Owen Lewis

### LIBRARY FUND

In honor of  
Mr. and Mrs. Lou Gordon's grandson

Sidney Brickel's recovery

In memory of  
Zelda Israel

Clara Borenstein

Madeline Drench

Hinda Bardack

Nettie Epstein

Dora Sherman

David Bergner

husband of Joan Ratner

Louis Reiss

mother of Edward Alterman

Margaret Kaye

### PRAYER BOOK FUND

In memory of  
Zelda Israel

Vicki, John, Sarah and Rachael Nelson  
Wendy, Jeff, Daniel and Adam Rader

Shirley Kasten

\*Joyce and Ron Levy

### RABBI ROSOFF DISCRETIONARY FUND

In honor of  
Rabbi Rossoff

Linda Brower and Michael Kushner

Jennifer Menkes' marriage

Deenie and Sid Schlosser

In memory of  
Nettie Epstein

Amy and William Lipsey

Ellen and Alan Levy

Ina Golub

Shari and Steve Leviss

Hilda Kasdin

Barbara and Donald Piermont

Sandy and Barbara Efros

Rabbi David and Ellen Nesson

Sisterhood

Hilde Spain

Marge Elkind

Deenie and Sid Schlosser

Fran and Ralph Stern

Debbie Ross

Vicki Nelson

Edith Epstein

Linda Carleton

David Bergner

Deenie and Sid Schlosser

Christina Marie Meredith

Barbara and Kenneth Parker

Samuel Winick

**DR. CARL ROSENBERG FUND**

In memory of

Mrs. Helen Abraham

**SOVIET JEWRY FUND**

In honor of

Nathaniel Robert Rossoff

Daniel Murphy Szorlip

Jennifer Menkes' marriage

Sandy Luray

Amanda Stone

In memory of

Helen Abraham

Nettie Epstein

Fanny Kaplan

Hinda Bardack

David and Miriam Lerman's brother-in-law

**TEACHER ENRICHMENT FUND**

In memory of

Fanny Kaplan

Nettie Epstein

**SHABBAT SHIRA FUND**

In honor of

Nathaniel Robert Rossoff

In memory of

Nettie Epstein

Gertrude Ganzer

**RABBI WARSHALL DISCRETIONARY FUND**

In honor of

Michael becoming a Bar Mitzvah

In memory of

Earl Fleeger

Mr. and Mrs. Donald K. Piermont, Jr.

Evelyn and Alvin Rosenberg

Ellen and Roy Konwiser

Pat and Leonard Tolkoff

Judy and Marc Allen

Shari and Steve Levis

Pat and Leonard Tolkoff

Linda and Ed Wacks

Sandy and Phil Werner and family

Carey and Lee Brodsky

Haya and Richard Gartner

Susan and Michael Miller

Pat and Phil Gluckman

Dee and Irv Gozonsky

Barbara and Donald Piermont

Martin and Susan Mayer

Donna and Bernie Feuerzeig

## Mazel Tov

The congregation shares in the happiness of its members and is thankful for the blessings they enjoy. We extend our heartiest congratulations to the following families: on the birth of:

a son, Bradley Seth, to Linda and Michael Kushner

Congratulations to:

Jordana Fenik, Grade 9 and Tara Melnick, grade 10, who have qualified as semi-finalists in the MetroWest Israel Test. We are very proud of them.

Seth Levy, who made the Dean's List at Muhlenberg College, in Pennsylvania.

## Jodo Gift Shop

SPECIAL 20% SAVINGS ON  
INVITATIONS AND ANNOUNCEMENTS

*Calligraphy Services Available*

20 PARK PLACE, MORRISTOWN, NEW JERSEY  
539-2289

### GOURMET DELI

Smoked Fish • Sloppy Joes • Salads • Prepared Foods

### FINE CATERING

Bar/Bat Mitzvahs • Weddings • Cocktail Parties • Corporate Affairs



GOURMET DELI • CATERERS

POWDER MILL PLAZA  
RT. 10, MORRIS PLAINS

644-2664 prompt delivery open 7 days

NJ LICENSED

ASHA CERTIFIED

*Nina Levitt, M.S., C.C.C.*  
(201) 455-0143

*Sandy Blumenfeld, M.S., C.C.C.*  
(201) 984-1114

32 MAPLE AVENUE

HOURS BY APPOINTMENT MORRISTOWN, NJ 07960  
SPEECH • LANGUAGE PATHOLOGISTS

(201) 267-2424

Donald K. Piermont, Jr.

### Dave Stern Tires of Morris Inc.

112 Ridgedale Avenue - Morristown  
B.B. Goodrich • Michelin • Centennial

Tires  
Air Conditioning  
Front-End Alignment  
Front-End Parts  
Minor Tune-ups

Brakes  
Shocks & Struts  
Exhaust Systems  
Oil Changes / Lube  
Batteries

## ELLEN KONWISER

Personalized Stationery & Invitations  
Business & Social  
Party Accessories & Favors

Temple Members:  
25% Discount on  
Invitations

23 Stonehenge Road  
Morris Township, N. J. 07960  
(201) 539-3533

Scott Prideaux  
Janet Foley Prideaux

## International Pottery

Unique gifts & decorative accessories

28 Park Place • on The Green • Morristown, NJ 07960  
Tel. (201) 538-1919 Fax Available

## DOROTHY & G. & BARBOUR CATERING

*"Chef for all occasions"*  
Nothing Too Large or Too Small

P.O. Box 257  
East Orange, New Jersey 07019  
Telephone: 675-8563



**BARBARA G. KERN, C.S.W., Ph.D.****PSYCHOTHERAPY**

Individual, Marriage, Family  
Child, Adolescent, Adult

4 Maple Avenue  
Morristown, New Jersey

285-0500

Weekday, Eve.  
& Sat. Appts.

Harriette Davis  
Travel Consultant

**Guaranteed Travel**

83 South Street  
Box 269  
Morristown, N.J. 07963

201-540-1770  
Telex: 139215  
Fax: 201-540-8602

**YOUR SHIELD OF  
PROTECTION FOR  
HOME AND BUSINESS**

Martin J. Okun, CPP  
Charles Okun, PE

Serving the North  
Jersey community  
for over 30 years



961 Route 10 East  
Randolph, New Jersey 07869  
(201) 927-4900

- Burglar Alarm Systems
- Fire & Smoke Alarm Systems
- Closed Circuit Television Systems
- Access Control Systems
- 24 Hour Monitoring by  
Computerized Central Station
- Evaluation and Maintenance  
of Existing Systems
- Holdup Alarm Systems
- Personal Emergency Alarm  
Systems

**SCHLOTT**  
REALTORS®

Susan Aktivis  
Sales Representative

Bus: 201-539-3435

Eve: 201-539-6040

Morris Township / Convent Station

218 Madison Avenue

Morristown, New Jersey 07960

*Pretty Papers  
from Michelle*

25% DISCOUNT FOR  
TEMPLE MEMBERS

MICHELLE VARGA

6 Craig Court  
Morristown, NJ 07960  
201-539-8029

**PIP PRINTING**

World's Largest Business Printers  
591-93 S. Livingston Avenue  
Livingston, New Jersey 07039

201 533-9330 • FAX 201 533-9311

Georgia Solotoff

**THE BETH ISRAEL  
CEMETERY ASSOCIATION**  
Ridgedale Avenue, Cedar Knolls

Plots Now Available in New Section  
Preferred Rates for Temple B'nai Or Members

For Information Call: 584-2415

**THE CAMP CONNECTION**

**SLEEPAWAY CAMP ADVISORY SERVICE**  
TRADITIONAL, SPORTS AND SPECIALTY CAMPS  
TEEN TOURS, PRE-COLLEGE PROGRAMS

DONNA OKIN  
MORRIS PLAINS, NJ 07950

(201) 984-5700  
NO FEE  
NO OBLIGATION

20% Discount

MARLENE ROSENTHAL  
328-7328

**Marlene's Place**

Personalized Invitations & Wedding Announcements  
Bar/Bat Mitzvahs, Weddings, Births  
and Stationery

41 Old Mill Drive  
Denville, NJ 07834

Hours by Appointment  
My Place or Yours

**sight + sound**

CAMERA • AUDIO • VIDEO  
Audio in Morristown store only

MORRISTOWN 60 Speedwell Ave **267-6700**  
(ACROSS FROM THE HEADQUARTERS PLAZA HOTEL)

PARSIPPANY Rt. 46, Troy Shopping Center **334-9200**  
(ACROSS FROM THE RUSTY NAIL)

BERNARDSVILLE Shopping Plaza, Rt. 202 **766-2310**  
*the Finest in Photographic and Audio Equipment*

*catering  
extraordinaire*

A COMPLETE SERVICE  
FINEST OF FOOD  
SERVICE PAR EXCELLENCE  
BY THE CALVIN JACKSONS OF MONTCLAIR  
(201) 744-1727

Andrew Steinberg

201 • 328 • 1800



THE  
**LAUGHING LION**

40 N. SUSSEX STREET • DOVER, N.J. 07801

Do you have something to celebrate?  
**A WEDDING - BAR/BAT MITZVAH - ANY PARTY AT ALL**  
I will do all the work -- all you have to do is  
get dressed up and celebrate!

BETH HYRE  
Events Planner

292-2554

**"Write" On...**

Personalized Invitations & Announcements  
Bar/Bat Mitzvahs, Weddings, Births,  
Stationery and Unusual Gifts

337 Route 46 **20% Discount** 625-2120  
*Rockaway*



# May 1991

## Iyar-Sivan



SUNDAY	MONDAY	TUESDAY	WEDNESDAY	THURSDAY	FRIDAY	SATURDAY
			<b>1</b> 6:00pm Ritual Committee 7:30pm Adult Education	<b>2</b> 10:00am Sisterhood Study Class	<b>3</b> 6:00pm 4th Grade Shabbat Dinner 7:30pm 4th Grade Shabbat & Teacher Recognition	<b>4</b> 9:30am Kindergarten Session 9:30am 2nd Grade Naming Program 11:00am Jaime Ackerman-Bat Mitzvah
			Food Drive			
<b>5</b> 9:30am Temple Gourmet Breakfast  Food Drive	<b>6</b> 6:00pm ORIM/SYG 7:00pm Last High School Session 7:30pm Executive Board Meeting	<b>7</b> 6:00pm JYG Board Meeting 7:30pm Women in the Rabbinate - Sisterhood Program	<b>8</b> 7:30pm Adult Education	<b>9</b> 10:00am Sisterhood Study Class	<b>10</b> 8:00pm Shabbat Services	<b>11</b> 9:30am 1st Grade Creation Service 11:00am Lindsey Bogdan-Bat Mitzvah 12:30pm Cradle Roll
<b>12</b> 12:30pm JYG Lunch and Elections Last Day of School-Closing Program	<b>13</b> 7:00pm Confirmation Rehearsal 8:00pm Board of Trustees Meeting	<b>14</b> 4:30pm Last Tuesday Midweek Hebrew Session 7:00pm Confirmation Rehearsal 7:00pm Sisterhood Board Meeting 7:30pm Roah Chodesh Circle	<b>15</b> 6:00pm Singles' Group Steering Committee Meeting 7:30pm Adult Education	<b>16</b> 10:00am Sisterhood Study Class 4:30pm Last Thursday Midweek Hebrew Session 5:30pm Confirmation Dinner & Rehearsal	<b>17</b> 7:15pm Consecration of Confirmands 8:00pm ORIM Graduation	<b>18</b> 9:30am Kindergarten Session 11:00am David Cohen - Bar Mitzvah Last Day of School Erev Shavuot
<b>19</b> 11:00am Confirmation Shavuot	<b>20</b>	<b>21</b> 8:00pm Religious School Board Meeting	<b>22</b> 7:30pm Adult Education	<b>23</b> 10:00am Sisterhood Study Class 8:00pm Congregational Meeting	<b>24</b> 8:00pm Shabbat Services	<b>25</b>
<b>26</b>	<b>27</b> Memorial Day-Office Closed	<b>28</b> 7:30pm "Me and My Kid" - Sisterhood Program	<b>29</b> 7:30pm Adult Education	<b>30</b> 10:00am Sisterhood Study Class	<b>31</b> 8:00pm Renaissance Shabbat Services	

April

S	M	T	W	T	F	S
	1	2	3	4	5	6
7	8	9	10	11	12	13
14	15	16	17	18	19	20
21	22	23	24	25	26	27
28	29	30				

June

S	M	T	W	T	F	S
						1
2	3	4	5	6	7	8
9	10	11	12	13	14	15
16	17	18	19	20	21	22
23	24	25	26	27	28	29
30						