

Temple Topics

JANUARY 2003

TEVET / SHEVAT 5763

THE MONTHLY NEWSLETTER OF TEMPLE NER TAMID

STEVEN KUSHNER Rabbi

*"To every thing there is a season
and a time to every purpose under heaven...
a time to plant,
and a time to uproot
that which is planted."*

For many of us, *Ner Tamid* is a relatively new experience. A place to educate our daughters and sons in the ways of our mothers and fathers, a place of community, a new home

away from home. For some of us, *Ner Tamid* has been an integral part of our lives for a longer period of time.

What Goes Around, Comes Around: Assuming Responsibility for the Future

We remember when the back wall had carpeting, when the Temple's office was found in a classroom, when special occasions meant parking on the grass. And for a few, being a member of this congregation recalls a clapboard shingled white farm house, just in front of what is now our non-kosher, permanent, concord-grape adorned *sukkah*.

That farm house, like the carpeted back wall upon which little kids used to leave the impressions of their fingers, is gone. Testimony to the growth (and vision) of our members, past and present. Soon, more of what we call *home* will also be relegated to the chambers of memory. The *sukkah*, replete with its *menorah*-mosaic floor, not to mention its grapes, and the tree, that big, towering oak at the crest of our hill—are both destined soon for uprooting.

At the same time, this month marks the new year of the trees. *Tu B'Shevat*. The day on which the *Mishnah* tells us we are to *plant* trees. For the future. Like the *midrash* of the old man planting a sapling. When confronted by a passer-by that he would never live to see it bear fruit, the old man replied, "I came into this world with trees planted for me; I, too, will plant for those who follow." Ours is a tradition which teaches that if you are planting a tree and are informed that the *Messiah* has arrived, you must first finish planting your tree. For Jews, the future is essential, even *after* it has arrived.

I confess, I am saddened by the necessity to fell that marvelous tree in our front yard as we expand our synagogue for a second time in seven years. It has served us well, blanketing us with its shade on those Rosh Hashanah afternoons. But sometimes the future demands making breaks with the past. Sometimes planting requires uprooting. And make no mistake about it, what we embark on this month in the front yard of our Temple is planting. For the future.

The expansion of our facility is much more than a creation of extra space. To be sure, we need more room. The sophistication of our Religious School affords us the opportunity for one-on-one private tutoring; the only problem is we don't have ade-

Mark Your Calendars

January 17—8 pm
Shabbat Shirah

January 19—3 pm
Tu B'Shevat Seder

January 25—9:30 am at Temple Emeth
Regional Spirituality Kallah

Shabbat Services

Erev Shabbat services every Friday at 8 p.m.
except the last Friday of the month when
services will be at 6:30 p.m.

Shabbat services every Saturday at 10 a.m.

January 3—7 pm
Tot Shabbat

January 11—10 am
Casual Minyan

January 17—8 pm
Anniversary Shabbat

January 31—6:30 pm
Kabbalat Shabbat: Early Friday Night Service

B'nai Mitzvah

Mazal Tov to the happy families

January 4	Hannah Maddrey
January 11	Mark Smukler Emily Spitzer
January 18	Rachel Adler Molly Hindenberg
January 25	Marcello Halitzer

(Rabbi continued on page 7)

TEMPLE NER TAMID

936 Broad Street
Bloomfield, New Jersey 07003
Tel: 973.338.1500
Fax: 973.338.4486
www.neramid.org

a Reform synagogue serving
Bloomfield, Glen Ridge, Montclair
and surrounding communities

Member UAHC

RABBI

Steven Kushner

CANTOR

Jessica Levitt

DIRECTOR OF EDUCATION

Iris Schwartz

PRESCHOOL DIRECTOR

Joan Goodman

ADMINISTRATOR

Renee Drell

YOUTH DIRECTOR

Sharon Rappaport

PRESIDENT

Robert Adler

VP FOR PLANNING & DEVELOPMENT

David Abramson

VP FINANCE

Robert Rosenberg

VP RELIGIOUS AFFAIRS

Woody Eisenberg

VP MEMBERSHIP

Barbara Shapiro Furst

VP HOUSE & ADMINISTRATION

Robert Rich

VP EDUCATION

Nancy Barbe

VP EARLY CHILDHOOD EDUCATION

Sharon Rosen

TREASURER

Rochelle Sandler

SECRETARY

Belinda Plutz

BROTHERHOOD PRESIDENT

Stephen Rosen

SISTERHOOD VP of PROGRAMS

Susan Fader

YOUTH GROUP PRESIDENT

Alexandra Klein

TEMPLE TOPICS EDITOR

Laurie Schifano

BOB ADLER President

ON DECEMBER 23RD, MY DAUGHTER RACHEL celebrated her 13th birthday, a momentous birthday in the life of any Jewish child. Normally, our family celebrates Rachel's birthday together. On a weekday, as it was this year, the four of us would have a nice dinner together (with a party with Rachel's friends scheduled for the nearest weekend).

Being together on December 23rd has become very important to us, which should come as no surprise to anyone whose birthday typically falls on or near a holiday that tends to overwhelm the nearby dates.

A Fiscally-Prudent Leap of Faith

Yet, even though her big brother Jake had returned from his first semester away at college a few days earlier, the four of us did not have dinner on December 23rd this year. Why? I was at Ner Tamid, chairing a special meeting of the Board of Trustees.

Yet, I believe that being with 28 of my fellow congregants who took on the mantle of leadership for our community may be the most meaningful birthday gift I may ever give to Rachel...and to other current and as-yet-unborn members of our Jewish community.

Confused? Read on.

We decided at our regularly scheduled Board meeting on December 10th (the second Tuesday of each month for those of you interested in attending) to reconvene on the 23rd. The Board felt that, in order to decide to break ground on the building addition that is one of the two key parts of the *Kehilla* fundraising effort, we needed more time to review a detailed presentation and then discuss further:

- where we stood regarding the overall campaign,
- what the bottom-line costs of the project would be,
- where we stood regarding overall fundraising,
- what creative opportunities we could devise to save money and match our plans to our pocketbook, and
- what our commitment was to the second key part of the *Kehilla* effort—an endowment fund to defray the costs of programs that would take place in our expanded building.

The gift we gave Rachel that night was both tangible and intangible. The gift—adopting a resolution (see below) to proceed with construction—was partially the result of the six hours of deliberation in those two meetings and countless other hours of planning, analysis, and preparation. But the greater gift was something Rachel will never see—the heart and soul that every member of the Board brought to bear on the decision—matched with a hard-headed sense of fiscal responsibility to this community.

A Decision About the Building

Heart and soul—and fiscal responsibility? One doesn't generally hear these words together. But the reality is that the Board of Trustees voting as it did on December 23rd to authorize breaking ground was a fiscally prudent leap of faith.

How a leap of faith? Quite simply, the \$1.53 million we have raised in cash and pledges so far from 140 members of our community is not yet enough to fully fund the construction of the building addition, let alone an endowment. Based on our financial projections, it would take \$445,000 more in 5-year pledges to fully pay for the costs of the building addition and the fundraising campaign itself. Both the good and bad news is that more than 330 members have not yet been asked directly, or have only recently been approached, for a pledge.

How was it fiscally prudent? We had come to a point in time where delaying a decision to break ground would have pretty much guaranteed that the costs of construction would have risen 5% or more and that construction could not meet our needs by the time of the next High Holy Days and school year. Also, during this period of exceptionally low interest rates, any of the initial proceeds from *Kehilla* allocated to an endowment would earn the congregation little, whereas allocating them to the new building would enable us to take advantage of inexpensive financing.

(President continued on page 6)

Winter comes with beauty and austerity. Her gray clouds drop snow, rain, and ice upon a brown and barren land. In time, these pure offerings degrade into mud and slushy muck. Purity is only an illusion. At night, a sharp, biting wind rises from the north. Darkness comes early, and people scurry home from a hard work day to spend a few warm, bright hours with their family. It's the time of year that I feel like hibernating. Call me when it's spring.

Last week I went for a late-afternoon walk and I saw winter's gifts differently. I noticed that twilight lingered; the sky turned purple, then indigo, and finally deep blue. Colors floated in the thin, chill air, they hung like curtains over my quiet town. I perceived that the light changed with infinite slowness. Most of all, I sensed that I was on a slowly revolving planet, far from the sun, and suspended somewhere in a vast, cold universe.

The words of *Hallel* are traditionally said in these the darkest days of the year. During each of the eight days of Hanukkah, Jews around the world distract themselves from the coldness of the day by immersing themselves in the pure joy of praising the One who is the Creator of All.

Hallel usually refers to the public recitation of Psalms 113-118. It is one of the oldest forms of liturgy we have and is known to date back to the times of the Levites in the Second Temple. It is an essential expression of thanksgiving for divine intervention into the lives and history of the Jewish people. Together, they are a powerful affirmation of God's saving power.

Hallel is chanted on every day of Sukkot, Hanukkah, the first two days of Passover, the Seder service itself, and Shavuot. *Hallel* is not chanted on Rosh Hashanah and Yom Kippur, because it was considered too joyous for such solemn days when life and death are in the balance. *Hallel* is also not chanted on Purim, because the scroll of Esther is considered the festival's

text of praise.

The God of *Hallel* is a God who controls and supercedes natural law. In Psalm 114 God makes the Jordan flow backwards and causes the mountains to "skip like lambs." He makes the barren woman into a mother, and brings forth "fountains" from flinty rocks. This power over land and sea is not unlike that of other deities in the ancient world; river-gods and mountain-gods were well-known in Canaan. But our god, *Adonai*, uses this power to bring moral and ethical order to the world and to the people Israel.

In Psalm 113 the poet asks, "Who is like *Adonai*, our God? Who is enthroned on high, yet deigns to look upon the heavens and the earth? He raises up the needy from the dust, from the trash heaps He lifts the destitute." God's power is used to reward the servants of the eternal and ensure their preservation. God's intervention saves both individuals and nations.

In Psalm 114 God takes Israel out of the "trash heap" of Egypt and brought her forth to a new, beautiful land. Now in Psalm 115, they encounter other "nations" or peoples who worship idols that, "Have eyes, but cannot see. They have lips but cannot speak." The Psalmist rejects idol-worship and encourages people to "trust in *Adonai*." All those who do so will prosper and be delivered from pain and suffering.

Psalm 116, 117 and 118 are beautiful and poetic renderings of the power of *Adonai* to save and heal. Despite enemies, despite set-backs, those who trust in the power of *Adonai* will be raised up by the strong right hand of God. Together, the narrative takes the people Israel from the creation of the world to the very personal salvation which is possible with firm faith and belief.

In the darkness of winter, in the death of the natural world we can seek life and hope in the words of the *Hallel*. This January, during *Shabbat Shirah* (The Sabbath of Song) on January 17th, the choir and I will share the

inspiring words of *Hallel* set to a variety of melodies and accompaniments. Please join me for this celebration of praise during our regular Shabbat service.

My favorite verse in all the *Hallel* is from Psalm 118, "I shall not die, but live—and tell of the works of *Adonai*." May we all find the coming secular year one of spiritual life, health and praise to the One who provides both.



Israeli Folk Melodies

Every nation has its own folk music. All draw upon centuries-old musical traditions to help foster a sense of national identity and cultural unity. So how did the early Zionists create a musical tradition? Our class will be divided into three parts: Songs of the Pioneers, Songs of War, and Songs of Peace and Hope. Relevant readings will be assigned, but the majority of the class will be spent listening to and learning about Israeli Folk songs. Come learn all the verses to the songs you've only hummed before!

Registration fee is \$10. Cantor Levitt will be teaching this course on Sunday mornings at 10:45 to 11:55 on January 5, 12 and 26.

Learning and Jewish Growth תלמוד תורה

IT'S INTERESTING TO BE A parent of high school and college-aged children. My role for the most part now is as counselor and not decision maker. I can give my opinion and advice, but I am well aware that it is time for both Ari and Rachel to be responsible for making "the big decisions" that arise in the course of beginning life as a young adult. Herb and I are in different stages of making this transition between parents as decision makers and parents as advisors with all four of our children. What decisions do we allow our children to make by themselves, which choices do we make for them, and when does the transition of roles take place? Moving from one parental role to the other is difficult.

This weekend I am accompanying a group of our 8th and 9th graders to the Youth Service Opportunities Project feed the hungry program. We will be cooking for, sharing dinner and interacting with a group of homeless New Yorkers. We will listen to a discus-

sion about the road back from homelessness, alcoholism and drug addiction from those who have been there. Our Ner Tamid group will light the Shabbat candles and worship together. Our job continues as we work at soup kitchens all around New York City. We will be putting our Jewish values into action. *Mitzvot R Us!*

Last Sunday some of our 6th grade families visited the Museum of Jewish Heritage. With a Holocaust survivor as a guide, walking through the exhibit on Jewish community our students learned more in one morning than even I could have ever imagined from someone whose life story is part of modern Jewish history.

In conjunction with their study about immigration, a few weeks ago some of our 7th graders visited the Eldridge Street Synagogue and the Lower East Side. Following that they journeyed out once again to Ellis Island. What better way to learn about our Jewish roots than by visiting those places that could tell its story better than any textbook?

To my dismay, few of our students or their parents participated in any of these experiences. I asked some of our 8th graders why they weren't coming on the trip to feed the hungry. Just yesterday a student told me that even though he had registered and his parents had already paid the non refundable fee, he knew on Wednesday that he would

be too tired to attend on Friday. Another told me it just wasn't the kind of experience he wanted to have. A 6th grader seriously said to me that she didn't have time for her class trip to the Museum of Jewish Heritage though she had never been there because she had to go to the mall. Was I incredulous? You bet!

Who among us would deny the powerful impact feeding the hungry could have on anyone, particularly an impressionable teenager? Who could deny the impact learning about the Jewish community and the roots of the Holocaust from one who was there? Is there a parent who wouldn't want, and in fact insist that their child participate in any of these wonderful, once in a lifetime learning experiences? Apparently there is.

Lest anyone think I am being unreasonable, I understand that students and families have commitments other than religious school trips. However, trying to leave the personal frustration out of the equation, I wonder why a nap has more appeal and is considered an acceptable choice by any child rather than doing a *mitzvah* and helping someone else. The boy who told me that he would be too tired to help feed the hungry has, in fact, already become a *Bar Mitzvah* and thus is considered responsible to do *mitzvot* like providing food for those in need and caring for the homeless. That responsibility has to be more than something we give lip service to at Ner Tamid.

For those who did not attend, these trips are now lost opportunities for learning, for bonding as families and community, for connecting to our Jewish past, for strengthening our Jewish future. While we all value our children and want to include them in the decision making process, there are times when parents need to guide children's choices with a firm hand. It's true that parents begin to relinquish our roles as decision makers as our youngsters get older. This is not yet the case when our children are still young enough to be attending religious school. Isn't it in our collective best interest to participate, to experience, to live what we teach both at home and in religious school rather than to spend our time napping or shopping? Surely our pillows will be there tomorrow as will the stores in the mall. Not so of these valuable learning experiences. They will be lost forever for those who choose to sleep or shop. This really isn't okay with me. Is it okay with you?

RELIGIOUS SCHOOL

IMPORTANT DATES TO REMEMBER

Sunday, January 5
Yom Tikun Olam Grade 5

Sunday, January 12
Tu B'Shevat Program for K-Grade 5 Students

Monday January 13
Tu B'Shevat Program for Grades 6 & 7 Students

Wednesday, January 15
Semester 1 ends

Sunday, January 19
No School, Faculty In-Service Day

Monday, January 20
No School, Martin Luther King Day

Wednesday, January 22
Family Education Program Grade 7 with the Rabbi

Friday, January 24
Grade 3 Shabbat dinner/"Hebrew Names" Program

Sunday, January 26
Grade 2 Family Education Program

Wednesday, January 29
Grade 6 Family Education Program with the Rabbi

What if it snows?

Our Religious School will operate on the same schedule as the Montclair Public Schools. So, if the Montclair Public Schools are cancelled due to the weather, Religious School will also be cancelled.

Whenever there is questionable weather, there will be a recorded message confirming whether or not Religious School will be held that day. Please call 973- 338-1500 if you are uncertain if school will be in session.

For parents of children in kindergarten through 5th grade, a "snow chain" has been developed and phone calls will be made to each family if Religious School is cancelled on a Sunday.

IRIS SCHWARTZ Director of Education

Tarbut Committee To Be Formed

If you are a talented and creative individual who loves the theater, or is someone who can never get enough books to read, or loves music or the arts, a new opportunity has come your way! Temple Ner Tamid is starting a new committee committed to presenting, supporting, and creating musical, artistic, theatrical events that reflect and celebrate the diverse, beautiful and spiritually enriching cultural heritage of the Jewish people. The committee is called *Tarbut*. *Tarbut* is the Hebrew word for culture. Culture can mean different things to different people, so we need your help in shaping the direction of the committee as well as help in executing events. Already on the docket of proposed activities is a trip to the Brooklyn Art Museum to view and learn about art created by concentration camp internees, additional *Havdalah* Cafes, a collaborative event with the NJ Chamber Music Society, an Arts Power Production of *Lily's Crossing* and a members Art show. These are just a sampling of the possible events. Please join the *Tarbut* committee so the events reflect the diversity of your interests.

The *Tarbut* committee is holding its first meeting on January 7 from 7-8:30 pm. Please come and share your ideas of how to bring the best and most exciting events to our community.

If you are unable to make our first meeting, but are interested in participating please do not hesitate to call Miriam Chilton (973) 655-1846.

Temple Book Reading Project Update

A brief update for those interested in our Temple-wide book project. The virtual committee process was a great success. We have received dozens of recommendations and offers to help from Temple members. All of this is very encouraging. We have an interesting and broad range of suggestions.

Now for the next step—book selection. We will be holding a meeting at the Temple to select the book and need your help. The meeting will be held on January 16 at 8 pm. At that time the suggestions will be reviewed and recommendation selected. If you are interested in selecting the book, organizing the program, leading discussions, etc. please make an effort to come. I will compile the recommendations and send them to all the interested parties.

Please contact me at repolton@aol.com or by phone at 973-783-0137. Let me know if you plan on attending and I will send you our selected list. We need your help to make this successful.

Richard Polton, Virtual Chairperson



STAN JACKSON
CLARINET, SAXOPHONE, FLUTE
PERFORMANCE AND INSTRUCTION

7 HAMILTON ROAD
6LEN RIDGE, NJ 07028

CELL: 973-495-3188
HOME: 973-429-9791
E-MAIL: stan-jackson@msn.com



TNT's Religious School and the *Tarbut* Committee are pleased to invite you to a special production of *Lily's Crossing*. *Lily's Crossing* will be performed for the third through fifth grade classes on February 2 at 10:45 am. Please join us for this special production. Family and friends are welcome.

Lily's Crossing, ArtsPower's compelling dramatic adaptation of Patricia Reilly Giff's award-winning novel, is the story of Lily Mollahan, a spunky young girl who looks forward to spending each summer at Rockaway Beach, New York with her father and grandmother.

It is the summer of 1944 and Lily's dream for a peaceful summer vacation is shattered when her father goes off to war and her best friend, Margaret, moves away. After Margaret leaves, Lily meets Albert, an orphaned refugee from war-torn Hungary who is staying with the family next door. As Lily and Albert become friends, they begin sharing their secrets and wishes. Both wish to cross the Atlantic to find a loved one, and Lily comes up with a plan for crossing the ocean in a rowboat with Albert as her willing accomplice. Will Lily's scheme reunite her with her father and Albert with his sister?

Lily's Crossing is a tour-de-force drama that shows how an unlikely friendship forever changes the way a young girl sees her life.

A special thanks to ArtsPower for donating this special event to our community. Gary Blackman and Mark Blackman founded ArtsPower National Touring Theatre. Under their leadership, ArtsPower has emerged as one of America's largest and most active producers of Actors' Equity Association theatre for young and family audience.

We hope to see you on February 2 at 10:45 am for this special event (recommended for ages 8 and up).

So the Board voted to proceed, but with two safeguards built into our plans. First, we fine tuned the building design (see below) to save \$115,000 with minimal impact on its utility. Second, we deferred final authorization to finish the lower level of the building. If fundraising goes well in the next few months we can complete the new classrooms and youth group center on schedule, but in case fundraising is disappointing we can still gain needed space with a finished upper level and save about \$300,000 by leaving the lower level unfinished for now. In deciding to proceed, the Board balanced its fiduciary duties to be fiscally prudent and meet the practical needs of the congregation.

A Commitment to the Endowment

That is only for the more tangible part of the *Kehilla* commitment we made. We are fully committed to an endowment, the currently more intangible part of this effort.

Bricks and mortar are visible, as are classrooms, offices and places to pray. But the goal of building up endowment dollars is to permit us to fund special programs (lectures, concerts, scholar-in-residence programs, retreats, etc.) that might not be built into our annual operating budget. As I've written before, we are seeking cash contributions and 5-year pledges—as well

as beginning to seek bequests and other forms of estate planning—to build up endowment funds large enough to generate annual income for such special programs.

Currently, we are working with a congregant who is planning a bequest of \$200,000 to \$250,000—with those funds targeted to funding the intangible, to the transmitting of Torah from generation to generation. I am also discussing with some other congregants the idea of making a financial commitment that would permit us to make the intangible more tangible, by contributing funds that might be spent over the next year or two to show our congregation what kinds of special programs such an endowment might fund long-term for Ner Tamid. While the income an endowment generates varies (and is currently quite low), it would be prudent to have such an endowment fund at Ner Tamid—because of the precious yet intangible goals of this kind of program-focused endowment.

Taking Your Part in *Kehilla*

We are a community bound together by a commitment to the tangible and the intangible. We can hold the scrolls that we call the Torah in our hands, yet what we do is read from that very parchment—and reading is the transmitting of intangible ideas. The Torah is all about teaching and learning, making it a promise rather than an object. The tangible scrolls help us give

each other the intangible. What Judaism tells us to prize more than anything is the intangible—love, justice, mercy, peace, compassion and the other oh-so-fleeting guides to how we should choose to live with each other and with a God we cannot see, feel, taste, smell or touch.

So, I urge everyone in this Jewish community to make a financial commitment to both the tangible and the intangible that make us a Jewish community, a *Kehilla*. Even better, call me to volunteer to join our dedicated but overworked *Kehilla* team and make a few solicitation calls to some of those 330 fellow congregants just waiting to be asked for a donation. Yes, soliciting donations can seem scary at first, but it's really not that hard and gives a tremendous sense of satisfaction.

Please make this commitment to all the Rachels and Seths and Marthas and Davids and Debbies and Harveys and Samanthas and Daniels in our community—whether they are celebrating their 13th or 83rd birthday.

Your commitments to the building and the endowment will show that you join the Board of Trustees (and the 140 Ner Tamid members who have already made financial commitments) in the promises we make now—to what we can do together as a community.

Here is the resolution that passed on December 23rd:

- Whereas Temple Ner Tamid has grown and desires to expand its facility;
- Whereas the Zoning Board of Adjustment of the Township of Bloomfield has approved the expansion of the building;
- Whereas construction of the expansion is in the best interest of the congregation; and
- Whereas the congregation of Temple Ner Tamid at a special congregational meeting on November 10, 2002 authorized the construction of the expansion of the Ner Tamid facility generally in accordance with the plans of Bogdanow Partners, Architects PC; authorized the officers to obtain and implement construction and permanent financing as required; authorized the officers and trustees of the Temple to do whatever is necessary to effectuate the construction of the addition to the Temple facility;
- Whereas the Board of Trustees wishes to avoid unnecessary increases in the costs of construction of the expansion of the Temple;
- Whereas an important way to avoid increases in costs is to promptly commence construction; and
- Whereas the Board remains committed to ongoing fundraising to achieve the stated goals of the *Kehilla* campaign including establishing an endowment;

NOW THEREFORE, the Board of Trustees hereby resolves as follows:

1. It authorizes commencement of the construction of the expansion of the Ner Tamid building in accordance with option 3* as set forth in the plans of Bogdanow Partners, and as set forth in documents presented to the Board on this date;
2. It directs that fund raising continue;
3. It authorizes the officers to obtain and implement financing as necessary; and
4. It agrees to determine, approximately three months after commencement of construction (at a time established by the construction manager and currently estimated to be April or May 2003), whether the lower level of the facility shall be finished at that time.

* Option 3 scaled back the footprint of the addition 5-feet from the original plan, resulting in estimated construction savings of about \$115,000. This was viewed by the Board as a financially prudent adjustment to the expansion size that will have no significant impact on the usages of the building. That scaled-back footprint means:

- a corridor, new lobby, office, and coat room have been slightly reduced in size;
- classrooms on the lower level will be roughly the size of the main level classes (or could be slightly larger if we change the size of the lower-level storage rooms); and
- the new social hall will accommodate about 180 people rather than the originally planned 200 for High Holy Days.

Obviously, if you have any questions about the campaign (either building or endowment) or the synagogue in general, please feel free to contact me, the other officers or Board members.

TEMPLE NER TAMID

February 2003

February 2003							March 2003						
S	M	T	W	T	F	S	S	M	T	W	T	F	S
2	3	4	5	6	7	8	2	3	4	5	6	7	8
9	10	11	12	13	14	15	9	10	11	12	13	14	15
16	17	18	19	20	21	22	16	17	18	19	20	21	22
23	24	25	26	27	28		23	24	25	26	27	28	29
							30	31					

Sunday	Monday	Tuesday	Wednesday	Thursday	Friday	Saturday
						February 1 10:00am B'nai Mitzvah Matthew Rogers & Dylan Weingarten (Mishpatim)
2 8:30am R.S. Grades K-2 8:45am Temple Tots Group 1 9:00am Beginning Hebrew 9:00am SYG & JYG: Sid 10:00am Ten Minutes of Torah 10:00am Youth Choir 10:45am R.S. Grade 3-5 10:45am ArtsPower's Lily's Crossing 12:00pm Prayerbook Hebrew	3 9:00am PreSchool 4:15pm RS Grades 6-7 6:30pm RS Grades 8-9 8:00pm Sisterhood Bd. Mtg.	4 9:00am PreSchool 12:00pm Lunch With Rabbi 7:45pm Intro to Judaism 8:00pm Executive Bd. Mtg.	5 9:00am PreSchool 10:00am Sisterhood Bible Study 4:00pm RS Grades 3-5 6:30pm RS Grades 6-7 7:00pm RS Grades 10-12 7:30pm Choir Rehearsal	6 9:00am PreSchool 8:00pm Rituals & Rubrics	7 9:00am PreSchool 7:00pm Tot Shabbat 8:00pm Erev Shabbat Service	8 10:00am Casual Minyan
9 8:30am R.S. Grades K-2 8:45am Temple Tots Group 2 9:00am Beginning Hebrew 10:00am Ten Minutes of Torah 10:00am Youth Choir 10:45am R.S. Grade 3-5 12:00pm Prayerbook Hebrew	10 9:00am PreSchool 4:15pm RS Grades 6-7 6:30pm RS Grades 8-9 8:00pm Brotherhood Mtg.	11 9:00am PreSchool 12:00pm Lunch With Rabbi-NJ 7:00pm Shores Mtg. 8:00pm Bd. of Trustees	12 9:00am PreSchool 10:00am Sisterhood Bible Study 4:00pm RS Grades 3-5 6:30pm RS Grades 6-7 7:00pm RS Grades 10-12 7:30pm Choir Rehearsal	13 9:00am PreSchool	14 AMSTERDAM TRIP 9:00am PreSchool 8:00pm Erev Shabbat Service	15 MFTY Convention
16 AMSTERDAM TRIP	17 MFTY Convention	18 8:00pm Religious Affairs	19 7:30pm Choir Rehearsal	20 NO SHORESH	21 8:00pm Erev Shabbat Service (Choir) 8:00pm Anniversary Shabbat	22 8:00pm Bar Mitzvah of Aaron Goldberg (Ki Tissa)
		8:00pm Tikdun Olam Mtg.				
23 8:30am R.S. Grades K-2 8:30am Grade K-1 Yom Tikdun Olam 10:00am Ten Minutes of Torah 10:00am Youth Choir 10:45am R.S. Grade 3-5 12:00pm Prayerbook Hebrew	24 9:00am PreSchool 4:15pm RS Grades 6-7 6:30pm RS Grades 8-9	25 9:00am PreSchool	26 9:00am PreSchool 10:00am Sisterhood Bible Study 4:00pm RS Grades 3-5 6:30pm RS Grades 6-7 7:00pm RS Grades 10-12	27 9:00am PreSchool	28 9:00am PreSchool 10:30am Bimah Time 6:30pm Kabbalat Shabbat	

TEMPLE NER TAMID

January 2003

January 2003						
S	M	T	W	T	F	S
5	6	7	1	2	3	4
12	13	14	15	16	17	18
19	20	21	22	23	24	25
26	27	28	29	30	31	

February 2003						
S	M	T	W	T	F	S
2	3	4	5	6	7	1
9	10	11	12	13	14	8
16	17	18	19	20	21	15
23	24	25	26	27	28	22

Sunday	Monday	Tuesday	Wednesday	Thursday	Friday	Saturday
			January 1, 03 NO RELIGIOUS SCHOOL NO SHORESH	9:00am PreSchool 8:00pm Rituals & Rubrics	9:00am PreSchool 7:00pm Tot Shabbat 8:00pm Erev Shabbat Service	10:00am Bat Mitzvah of Hannah Maddrey (Va'era/rosh Chodesh Shevat)
8:30am R.S. Grades K-2 8:45am Temple Tots Group 1 10:00am Ten Minutes of Torah 10:45am R.S. Grade 3-5 10:45am Israeli Folk Melodies 12:00pm Prayerbook Hebrew 12:00pm JYG: Bierman Home	9:00am PreSchool 4:15pm RS Grades 6-7 6:30pm RS Grades 8-9 8:00pm Sisterhood Bd. Mtg.	9:00am PreSchool 11:00am Seniors 12:00pm Lunch With Rabbi-NY 7:00pm Tarbut Committee Mtg. 7:45pm Intro to Judaism 8:00pm Executive Bd. Mtg.	9:00am PreSchool 4:00pm RS Grades 3-5 6:30pm RS Grades 6-7 7:00pm RS Grades 10-12 7:30pm Choir Rehearsal	9:00am PreSchool 8:00pm Rituals & Rubrics	9:00am PreSchool 8:00pm Erev Shabbat Service	10:00am Casual Minyan 10:00am B'nai Mitzvah Mark Smukler & Emily Spitzer (Bo) 7:00pm SYG Program
8:30am R.S. Grades K-2 8:45am Temple Tots Group 2 9:00am Beginning Hebrew 10:00am Ten Minutes of Torah 10:00am Youth Choir 10:45am R.S. Grade 3-5 10:45am Israeli Folk Melodies 12:00pm Prayerbook Hebrew 12:00pm SYG: Coffee House	9:00am PreSchool 4:15pm RS Grades 6-7 6:30pm RS Grades 8-9 8:00pm Brotherhood Mtg.	9:00am PreSchool 10:00am Shores Open House 11:00am Seniors 12:00pm Lunch With Rabbi-NJ 7:45pm Intro to Judaism 8:00pm Bd. of Trustees	9:00am PreSchool 10:00am Sisterhood Bible Study 4:00pm RS Grades 3-5 6:30pm RS Grades 6-7 7:00pm RS Grades 10-12 7:30pm Choir Rehearsal	9:00am PreSchool 7:30pm Shores Open House 8:00pm Reading Project 8:00pm Rituals & Rubrics	Shabbat Shirah 9:00am PreSchool 10:30am Bimah Time 8:00pm Erev Shabbat Service (Choir Sings) 8:00pm Anniversary Shabbat	TU B'SHEVAT 10:00am B'not Mitzvah Rachel Adler & Molly Hindenberg (Beshallah/Shira/Tu B'Shevat)
NO RELIGIOUS SCHOOL STAFF CONFERENCE 3:00pm Tu B'Shevat Sedar	RIK DAY NO RELIGIOUS SCHOOL NO SHORESH	9:00am PreSchool 11:00am Seniors 7:45pm Intro to Judaism 8:00pm Tikkun Olam Mtg. 8:00pm Religious Affairs	9:00am PreSchool 10:00am Sisterhood Bible Study 4:00pm RS Grades 3-5 6:30pm RS Grades 6-7 7:00pm RS Grades 10-12	9:00am PreSchool 8:00pm Rituals & Rubrics	9:00am PreSchool 8:00pm Erev Shabbat Service	REGIONAL KALLAH 10:00am Bar Mitzvah Marcello Halitzer (Yitro)
8:30am R.S. Grades K-2 9:00am Beginning Hebrew 10:00am Ten Minutes of Torah 10:00am Youth Choir 10:45am R.S. Grade 3-5 10:45am Israeli Folk Melodies 12:00pm Prayerbook Hebrew 5:00pm SYG: Superbowl Party & Home Hosp.	9:00am PreSchool 4:15pm RS Grades 6-7 6:30pm RS Grades 8-9	9:00am PreSchool 11:00am Seniors 7:45pm Intro to Judaism	9:00am PreSchool 10:00am Sisterhood Bible Study 4:00pm RS Grades 3-5 6:30pm RS Grades 6-7 7:00pm RS Grades 10-12 7:30pm Choir Rehearsal	9:00am PreSchool 8:00pm Rituals & Rubrics	9:00am PreSchool 6:30pm Kabbalat Shabbat	

Ner Tamid is About People

זכרונם לברכה

THEIR MEMORIES
ARE A BLESSING

IN LOVING MEMORY

Jeanette Huamani
Nancy Mellman
Ella Schmidt

Wife of Ben Huamani
Mother of Bob Mellman
Mother of Kathy Kahn

Shabbat—January 3

Maurice Barbe
Harold Bruntel
Mary S. Cohen
Sue Cooper
Rose Eatroff
Louis Fisch
Nettie Fischer
Joseph Frekhtman
Lillian Ginsberg
Charles Goldstein
Horace M. Guthman
Irene A. Hodes
Mannis Lazarus
Clarence Maher
Flora Maslin
Rose Nathanson
Robert Nazare
Alexander Pimes
Leonard Reisner
Rebecca Resnick
Kate Schwartz
Louis B. Shapiro
Rita Sheffrin
Fred Shure
Shirley Snyder
Beatrice Speer
Allan Sternfeld
Anna Sweetwood
Kate Wasserman
Janette Weinberg
Solomon Ziff

Shabbat—January 10

Bernard Aron
Else Berlin
Jane Breslow
Helene D. Cole
Josephine Colie
Kate Crastnopol
Ethel Dobrikin
Edna Fine
David Fisch
Abraham Flax
Sadye H. Gould
Charles Gruber
Kurt Haller
Charles Halperin
Morton Hyman
Gussie Jasik
Ben Katz
George Kauffman
Charles Kimmel
Eric Klein
Ruth Kosson
Harvey Logan
James Modesitt
Paul Nagourney
Isadore S. Pfeffer
Natalie Pine
Rose S. Pollack
Julian Reichman
Ruth D. Rich
Murray Rosenberg
Charles S. Rothenberg
Ida Sapir
Yetta M. Sercus
Gary Sherman
William Stein

Shabbat—January 17

Frank Becker
Rachel Behar
Joseph Bianco
Sophie Daniels
Rhoda Dolobowsky
Joseph Ebner
Beatrice S. Frank
Harry Garman
Pauline Gittelman
Helen Goldberg
George Greene
Helen Gurtman
Barbara Holstein
Carmen Huamani
Harry Kaplan
Ronna Lavner-Rose
Harry Lefkowitz
Clara Lipsky
Morris Margolius
Elinor B. Morris
Margaret Neuman
Lillian Passner
Jerry Peters
Charles Rand
Julius Rettig
Ronna Rose
Mae Sachs
Israel Shapiro
Bernard J. Spingarn
Leo Steinbach
Anna Stone
Alvin Taback
Yetta Weiss
Sol Weizelman
Emanuel Zwerling

Shabbat—January 24

Anna Appel
Robert Axelrod
Morris Bellet
Louis Borowsky
Deborah Bussan
Isidore Chevat
Joseph Ebel
Aaron Fagin
Norma Festa
Gussie Fishbain
Irving A. Friedman
Irving Gash
Ethel Gershon
Sol Gerson
Paul Handler
Rose Hertzberg
Alexander Hochman
Phillip Holland
Alice Janulis
Hyman Kantor
Rose Lazar
Mary Levin
Hannah Lief
Hyman Mandel
Cecilia F. Olinger
Louis Passner
Irving Polin
Isador Protas
Philip Roffman
Leo S. Sacharoff
Sam Schnellwar
Philip Schomer
Sandra Schwaighofer
Frieda H. Scott
Sam Silverman
Jack Smoger
Abraham N. Sokolow
Minnie Spitz
Frank Stone
Florence H. Webster
Sarah Weinberg
Elsie Weizelman
Fannie Wolfson
Meyer Yarmush
Leonard Zombek

Shabbat—January 31

Joseph Abramson
Ethel Aisner
Fred J. Balk
Leon Barnard-Jeserski
Jules Beitler
Paula Belove
Frances Berg
Blanche Bianco
William Chrobersky
Lena Daniels
Bernard L. Friedman
Dorothy Friedman
Esther Friedman
Jerry Gershenoff
Eva L. Gross
Wolf Hecker
Lillian Kaufman
Milton Klein
Harry Krischer
Pearl Lasky
Anna Lishinsky
Carol Loebelsohn
Isidore Meshover
Lilyan Morris
Chris Restaino
Louis Rockowitz
Shirley Siskin
Sima Tsemakhova
Morris Wasserman
Teresa Yablon



Wendy L. Grossman, D.P.M.
Podiatric Medicine and Surgery
Board Certified, ABOPPM

905 Broad St. (Fairway Gardens)
Bloomfield, New Jersey 07003

Tel. (973) 566-0811
Fax (973) 566-0833

Michael Stahl's
**Best Friend
Photography**

Specializing in hand-crafted black
and white environmental portraits
♦ Pets ♦ Children ♦ Families

Ask about our holiday greeting card special

Our B'nai Mitzvah packages can include black and white portraits and
photo journalistic candids along with full color work

www.bestfriendphotos.com

973-783-3618

quate places for such individualized education. So, too, with Adult Education. Our various courses on Jewish culture, history and literature, beginning and advanced Hebrew, and Ten Minutes of Torah move in and out of the library and sanctuary with parents and children dodging each other like commuters trying to catch a subway at rush hour. And God bless Ernest and Armando. What they do to make our facility functional qualifies as nothing short of miraculous.

Our new expansion will give us back a library—a place to sit, to read, to have quiet discussions. And a youth lounge. And two new dedicated spaces for adult learning, or one expanded space for visiting lecturers commanding larger audiences. All while our children are learning about how to be Jews. And yes, we will finally be bringing Iris out of the closet. Not to mention that Joan Goodman, our Preschool director, will actually be getting a desk. And when Religious School is not in session, we will have a room for smaller worship services as well as our new *B'Yachad* family service on the High Holy Days (no more outdoor tent). And a courtyard for warm weather *onegs* and *kiddush* luncheons.

All of this is intrinsically good. It is needed. But it is only one part of the picture. A building is just a body. Nothing more, nothing less. Our vision also includes an endowment, a source of perpetual revenue that will allow us to fill those spaces with remarkable and unique opportunities for Jewish growth. How often I have wanted to bring to *Ner Tamid* the ascendant voices of American and Israeli Jewish life. How often I have dreamed of transforming our synagogue from a drop-off to a drop-in center. As one of our members put it, to make *Ner Tamid* into a kind of post-graduate Hillel, a mini version of the 92nd Street Y, a place where we take ourselves as seriously as we do our children. To recreate our synagogue as a center for Jewish life and learning.

This is our dream. A body and a soul. A building and an endowment. And we are well on our way to making it all happen. But we are not there yet. We've raised enough money to break ground, to tear down that tree and the *sukkah*. We've raised enough money to pour concrete and lay foundations, to fashion a house with floors, walls and ceilings. All that remains then is to build. To build community. And opportunity. To build a future that serves us, our children, and the generations of

Jews who have yet to learn where Bloomfield, New Jersey is.

Indeed, the beneficiaries of our vision may very well be strangers to you and me, just as we are to those who had the courage to tear down that farm house on Broad Street some 40 years ago. Now the time for uprooting belongs to us. This is tearing down time. To dismantle the grape vines, to fell the tree, to break down our notions that membership in a synagogue is about what the institution will do for me. To be a member of a community is to bear collective responsibility. Even if you don't see what this dream can do for you, imagine what you can do for others. As the *midrash* teaches, the act of planting is not for self-interest; the fruit we eat comes from trees already planted. This is also planting season.

On some level, the whole point of Ecclesiastes' teaching—"To every thing there is a season"—is, to quote another maxim, "What goes around, comes around." How wonderfully ironic that we should be constructing on the very site where once there stood a white, clapboard shingled farm house. But then again, maybe it's not so ironic after all. Maybe this is the way it's supposed to be.

A Thing or Tu 'Bout Shevat

Tu B'Shevat is a time for family to get together and partake generously in the gifts of trees: fruits and nuts, and in particular, the species of fruit for which the Land of Israel is blessed—wheat, barley, grapes, pomegranates, figs, olives, and dates.

Tu B'Shevat is the day when new sap starts to rise in the tree, when new life is starting to emerge. Even though we are still in the middle of winter and all looks bleak, cold and lifeless, *Tu B'Shevat* comes—a day of new life with the promise of rejuvenation.

Will our dreams of growth and spiritual excellence "bear fruit", or won't they? Today, *Tu B'Shevat* is celebrated in numerous ways: By planting trees, by eating fruit, by having a special *seder*, by doing some special project for the environment, and/or by collecting funds to plant trees in Israel.

Come and explore various messages that are represented by this holiday: sing, enjoy a simple but meaningful "*seder*" of eating fruits and nuts in order of importance, based on the appropriate blessings, and share in a planting project!

Join with your Temple "family" to celebrate Sunday, January 19, 2002 at 3 pm. All are welcome. If you have questions or a desire to be more involved call Arlene Linetzky at 973-783-5420.



SISTERHOOD

Important Sisterhood Dates

March 17, 2003—A very special program has been planned. Bobbi Brown will be our guest speaker. Details to follow.

April 21, 2003—Hold the date for another great Sisterhood program.

Important Note: Please contact Susan Fader at (973) 667-7373 or faderz13@aol.com if you are interested in having childcare available during our meetings. We are hoping to offer this at the Sisterhood's expense, as we know many adults would be unable to attend otherwise.

Potpourri

Tribute Cards: Looking to send a special message to someone dear in honor of a wedding, graduation, B'nai Mitzvah, or express your condolences? Please contact Berna Berger at (973) 743-7212 to send a Tribute Card for you with a lovely personal note. The cost is only \$2 and donor credit is \$1 per card.

Domestic Violence Safe House: The Sisterhood is collecting cleaning supplies and household items for the local domestic violence safe house. Household items such as lightly used dishes, towels, sheets and small appliances will be greatly appreciated in addition to cleaning supplies. These items will be given to women that have escaped from situations involving domestic violence to help them set up their own homes. Items can be dropped off at the Judaica Shop.

Want To Earn Donor Credit? We are always looking for volunteers to spend a little time during religious school hours to work in the Judaica Shop. It will give you a chance to peruse the latest merchandise while you earn \$2 donor credit for each hour worked. Please contact Amy Levinsohn at (973) 744-3668 if you are interested in helping us out.

Purim—Merry Making Time

Sisterhood is beginning to plan for our annual *Shalach Manot* Basket giving. This is a fun project to help with and a great way to meet fellow members. I am looking for volunteers to help in planning the contents for these baskets, packing the baskets and passing them out during Temple hours around Purim.

In addition to the *Shalach Manot*, Sisterhood donates a percentage of our proceeds to Mazon. We are fulfilling the *mitzvah* of this holiday. Your help in this project will enrich this wonderful *mitzvah*. Please call Arlene Kraus at 973-661-3430.

Special Thanks

Charlotte and Mark Greenstein in honor of the birth of their grandson Jeffrey Steven.

Sisterhood Tribute Fund

Births

Barbara & Jim Woldow—Grandchild

Engagements

Priscilla & Jerry Stein—Son Craig
Lee Ann Fisher—Son Bill

Condolences

Debbie Kravitz—Memory of father
Marilyn Hilowitz—Memory of mother Ruth Hendler
Barbara Woldow—Memory of mother Ruth Hendler
Lil Green—Memory of brother

Thank You

Charlotte & Mark Greenstein—Good wishes on birth of grandson
Dorothy Druijan—Good wishes on birth of great grandson
Bernice Glucoft—Good wishes for recovery

Sisterhood Bible Study

Rabbi Kushner's study group will brighten your winter with knowledge, humor and lively conversation. Whether you are male or female you are welcome to this Wednesday morning free event in the library at 10 am.

Dates: January 15, 22, 29

Spirituality Kallah

Saturday, January 25, 2003
9:30 am—5:00 pm

Temple Emeth
Teaneck, New Jersey

Spend Shabbat in Study,
Worship and Song

Darshanit
Cantor Ellen Dreskin

Torah Study
Parasha Yitro

Complete Shabbat Experience
Including Havdallah
\$36 Per Person

Good News הנה מה טוב

WELCOME TO OUR NEWEST MEMBERS

Beth Leichman (Max)
818 Valley Road, Montclair; 973-509-0088

Linda Ormont & Jay Schreiber (Alana, Julie)
86 Gordonhurst Avenue, Montclair; 973-655-0535

B'NAI MITZVAH

January 4 Hannah Maddrey

January 11 Emily Spitzer
Mark Smukler

January 18 Rachel Adler
Molly Hindenberg

January 25 Marcello Halitzer

January Anniversaries

Mazal Tov to the following couples who will celebrate their anniversaries in January and will be honored at Shabbat Service on January 17:

John Atlas & Bonnie Friedman
Jed & Lori Beitler
Andrew & Karen Cohen
Matthew & Patty DeSimone
David & Kathryn Fishman
Gregory Frekhtman & Lidiya Trunina
Bruce & Laurie Goodman
Richard & Diane Horowitz
Laurence & Susan Jones
Arnold & Joyce Korotkin
Herbert & Ellen Lev
Scott & Jill Nadison
Fred Strasser & Mary Hickey
Walter & Betty Strauss
Kim Takal & Marilyn White-Takal
Steven & Jane Tennen

SENIORS

Louis R. Druian Fellowship Circle, co-sponsored by Temple Ner Tamid, the Weiss Family Endowment Fund and Dorothy Druian In Cooperation with the JCC Metropolitan NJ and the National Council Jewish Women, Essex County Division. Meetings are held at Temple Ner Tamid, 936 Broad Street, Bloomfield, NJ on Tuesdays, from 11:00 am – 2:00 pm. Current events discussions and/or video aerobics start at 11:15 am, followed by lunch (bring your own dairy) and then our feature presentation.

January Calendar of Events

Tuesday, January 7

Meeting – Program to be announced

Tuesday, January 14

Meeting – Program to be announced

Tuesday, January 21

Meeting – Program to be announced

Tuesday, January 28

Meeting – Program to be announced

Upcoming Trips

February 11-12

Atlantic City Overnight Sponsored by the JCC—Two days, one night in Atlantic City includes roundtrip coach transportation, one night accommodation at the Tropicana Casino & Resort, two casino coin bonus packages and a \$10 food credit at Tropicana. Cost is \$90 per person! For further information and reservations call Sharon Gordon at 973-736-3200.

March 10

JCC production of Hannah Senesch

BROTHERHOOD

We are very proud to announce that the North American Federation of Temple Brotherhoods (NAFTB) has awarded the Temple Ner Tamid Brotherhood their Golden Mezuzah Membership Award for 2001-2002. The honor is bestowed on those brotherhoods whose membership increased by at least 25% over the previous year. TNT Brotherhood membership now stands at 70. Many thanks to Anthony Reid for his recruitment leadership success as Vice President for Membership.

The Brotherhood has continued to support the Temple through its efforts

as ushers at the High Holidays, set-up and break-down staff for the *Havdalah Café* events, cooks at the very successful *Sukkot* family barbecue and volunteers at Clara Maas Hospital coming up on December 24-25.

Brotherhood meetings will be held on the second Monday of every month in the Library at 8 pm with the next scheduled meeting on January 13. All paid-up members and those interested in joining are welcome and encouraged to participate in the discussion of our programs and projects for the year ahead.

Alan Sokolow, Secretary

TREE OF LIFE

Leaves on the Tree of Life in the Temple lobby can be purchased to celebrate any *simcha*.

Commemorate any life-affirming event such as Birth, B'nai Mitzvah, Confirmation, Marriage or Anniversary.

Leaves cost \$180

Stones cost \$1000

Contact Laurie in the Temple office at 973-338-1500



*Whether playing,
creating or learning;
Camp Harlam
sums up the
ultimate in summer
camp living
in a Jewish
environment.*

**"Where Friends
Become Family"**

HEY POTENTIAL CAMP HARLAM CAMPERS AND PARENTS

Located in the foothills of the Poconos, Camp Harlam provides the finest in educational and recreational activities for Reform Jewish youth. Camp Harlam aims to achieve these goals through a mature, experienced and dedicated staff who are devoted to the well-being of the individual child.

Our camp is an Institute for Living Judaism. It includes Jewish education, learning Hebrew and experiencing spirituality that only enhances one's Jewish identity.

We also have instructional and recreational sports and swimming and an extensive arts and adventure program. Sports and adventure facilities include: lighted softball diamond, soccer fields, large indoor gymnasium, indoor and outdoor street hockey, basketball and beach volleyball courts, ga-ga pits, outdoor rolling blading path, mountain biking trails, three swimming pools, a lake, a tree house and climbing tower and walls. Art programs include: arts and crafts, drama, dance, guitar, nature and camp craft, photography, video and radio.

Drop by the office at Temple Ner Tamid to pick up your Camp Harlam 2003 application.

For more information, contact the winter office:

1511 Walnut Street, Suite 401
Philadelphia, PA 19102
215-563-8184

Website: www.campharlam.org E-Mail: campharlam@aol.com

Temple Ner Tamid offers scholarship assistance to anyone who applies to Camp Harlam

*Photography to make
memories last a lifetime...*

BAR/BAT MITZVAH
WEDDINGS
SPECIAL OCCASION



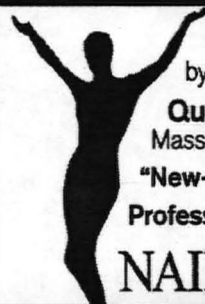
**GABELLI
STUDIO**

CONTACT JEFF WOLFSON,
DIRECTOR OF
IMAGING AND VIDEO

Member of the *Photo*

250 POMPTON AVENUE, VERONA, NJ • 973-239-2420

Mon. - Fri. 9:30 a.m. - 7:30 p.m. Sat. 9 a.m. - 6 p.m.



Healing Touch Massage
by a Nationally Certified Massauer

Queen For A 1/2 Day

Massage • Manicure • Pedicure • Facial

"New-La-La" Pedicure • Waxing

Professional Nail Care for Women & Men

NAILS & BODY WORK

973.509.3377 • 334 N. Fullerton Ave., Upper Montclair

Social Concerns גמילות חסדים

TIKKUN OLAM repairing the world

The Tikkun Olam Committee still needs congregants interested in social action! The Fifth Grade Religious School Class has developed a plan for donating leftover food from Bar Mitzvahs and other *simchas* at the Temple which will be a congregation-wide effort. Plans for rest of the year include a Mitzvah Day in the spring, participating with the New Jersey Food Bank throughout the year, and delivering High Holiday services to homebound Ner Tamid members. In addition, we are planning to host the Interfaith Hospitality Network (IHN) during the last week of December, 2003. Volunteers will be needed for a variety of activities.

By participating in the present activities of the committee and advocating for causes you identify, you too can participate in "Repairing the World." The next meeting will be at 8 pm on Tuesday January 21 at the Temple. For more information, contact the Tikkun Olam chairperson Larry Westreich at 973-509-1444 or Westlar@aol.com.

GROTTA FOUNDATION Sheila Eidelman

As the world sits idly by, allowing Jews to be killed and turning the blame upon us in the long run, we Jews still donate our time, efforts and money to help save the world. This is our tradition, our heritage and our essence.

We often see more to be done outside our immediate world than in it, but right here, in our neighborhoods are lonely Jews who would rejoice in a friendly voice, an interested party inquiring as to their well-being.

Temple Ner Tamid has an active program running that provides this wonderful service. But WE NEED MORE BUDDIES.

Won't you please look around you and help us to find someone who would welcome having a buddy? Please call the Temple today and DONATE this *mitzvah*.

KABBALAT SHABBAT

January 31
6:30 pm Service

a Nosh & Schmooze
will precede the
service at 6:00 pm

Babysitting will
be provided

**Please note that there
will be no 8:00 pm
service this evening**

Candle Lighting Times

January 3	4:23
January 10	4:30
January 17	4:38
January 24	4:46
January 31	4:54

Introduction To Judaism

A 16-session course designed to give participants a basic understanding of Jewish belief and practice will be offered in the locations listed below. The classes are open to all individuals who are considering conversion to Judaism; interfaith couples; Jews by birth and non-Jews who wish to obtain a basic adult-level knowledge of Judaism.

The course will approach Jewish tradition—faith, people, and a way of life through a study of the holiday and life-cycles of Judaism. A basic reading knowledge of Hebrew will also be included.

Classes will meet once a week for 16 weeks from 7:45 – 9:45 pm. A single registration fee of \$275, or \$225 for UAHC congregation members, includes tuition and one set of books and materials.

If you have anyone interested in enrolling or need more information about the class please feel free to call Vicky Farhi, Regional Director of Outreach & Synagogue Community at 201-722-9090.

Winter 2003 Schedule

Flemington	Jan 6 – May 19
Tenafly.....	Jan 6 – May 19
Livingston	Jan 9 – May 1
Aberdeen.....	Jan 26 – May 4

Introduction To Judaism is sponsored by the Outreach Program of the New Jersey-West Hudson Valley Council of the Union of American Hebrew Congregations and its 56 member congregations.



The *Kehilla* Campaign for Temple Ner Tamid's future has shot past \$1.5 million in pledges and cash on hand; we are well on our way to \$1.6 million at this time. As you learned at the congregational meeting, plans are being finalized, and we hope to start construction in the near future when we are certain that it is financially prudent to do so.

The major push for this campaign is underway. While participation has been excellent, and we thank all of you who have contributed time and money thus far, we have more than 300 families who have either not yet been approached or who are in the process of considering contributions. We will be making a major push in the next several weeks to reach you and ask that you be as generous as you can when you hear from your fellow congregant/volunteers. The future of Ner Tamid is bright, and the funds that we are raising now and in the long term will secure our place well into the 21st century.

You may find it interesting to know that approximately 50% of the membership of the Temple today were not members when we solicited for and built the last expansion, which was finished 7 years ago. In the donations made to date for the *Kehilla* campaign to date, approximately 50% of the donations have come from those "new" members. Over half of our donors today did not participate in the last campaign, and I believe, most were not members at that time. A substantial number of people who participated last time have increased their pledges over the donations given to the last campaign.

If you are donating stock or other securities to the Temple for your campaign or other obligations, please call the office of Emer Featherstone, Temple bookkeepers, at 973-744-3060 or 973-744-6713 the day the stock is transferred to us. This will insure immediate sale and proper crediting of your account and the Temple's.

Those who have given so far have been wonderfully generous; we are grateful and will be contacting you as soon as we can. If you would like to help with this campaign or have any questions, please contact David Abramson or me so that you are supporting the **Ner Tamid Center for Jewish Life and Learning**. A tremendous thanks to the many families (listed below) who have made pledges and/or contributions to date. Our goal is more and more reachable!

Lori Resnick and Josh Aaronson
Lori Price-Abrams and Rick Abrams
Tamara and David Abramson
Anne-Marie Nolin and Bob Adler
Florence and Raymond Aisner
Judy and Dan Anderson
Anonymous (1)
Myra and Andrew Armour
Cathy and Gideon Asher
Anne and Martin Baum
Lori and Jed Beitler
Berna Berger
Fern Bass and Mark Brown
Marion and Leonard Buchner
Rochelle Sandler and Joe Campeas
Amy Rosen and Tim Carden
Cornelia Sherman and Bob Carrigan
Dianna and Steve Chipkin
Barbara Friedman and Mark Citron
Amy and Scott Claman
Shirley and Max Cobert
Deborah and Roger Cohen
Ruth K. Cohen
Hedi Molnar and Michael Curcio
Lois and George Davis
Harriet Degenshein
Jane and Larry Degenshein
Harriet Degenshein
Patty and Matthew DeSimone
Mitchell Dinnerstein and Julie Blackman
Miriam Chilton and Joel Dorow
Dorothy Druian
Mindy Propper and Fred Duchin
Ellen Silver and Woody Eisenberg
Jean Ellis

Sonia Rapaport and Arthur Fagin
Lisa and John Falcone
Felicia and Ron Festa
Eve Robinson and Tom Fraioli
Susan Weinberg and Bruce Frank
Susan Helman and Michael Frank
Nancy and Joel Franklin
Dianna and Harry Friedland
Janet Boltax and James Friedman
Joanne and Mark Friedman
Martha Fritz
Barbara Shapiro Furst
Betsy Lembeck and Don Garber
Nancy and Robert Gerber
Arlene and Brian Glasser
Dot Glazer
Amy Lazarus and Eugene Goldberg
Laurie and Richard Goldberg
Steve Goldberg
Laurie and Bruce Goodman
Barbara and Larry Gottesman
Marge and Paul Grayson
Gladys Green
Helen and Melvin Green
Randy Simon and Lee Greenberger
Joanna Greenwald
Lennard and Michele Grodner
Florence Grossman
Lillian Grundfest
Susan Hochbaum and Steve Guarnaccia
Stacey and Rob Hammerling
Eileen and Scott Harwood
Susan and Albie Hecht
Cindy and Dan Herman
Howard and Dede Hirsch

Fran and Julius Hirsch
Ellen Sherman and Chris Hitchcock
Diane and Richard Horowitz
Alan and Jill Johnson
Ruth and Art Josephson
Barry Judelman
Kathy and Cliff Kahn
Linda Lendman and David Katowitz
Susan and Lanny Katz
Anna and Michael Katznelson
Jane and Andrew Kessler
Claire and Stan Keyles
Nancy Barbe and Steve Klein
Debbie Ostheimer and Harry Kleinman
Lourdes and Jeffrey Kobernick
Debbie and David Kravitz
Marilyn and Rabbi Steven Kushner
Audrey and Richard Lasday
Mary and Steve Lee
Rachel Hott and Steven Leeds
Ronnie and Josh Levering
Susan and Eric Levin
Kay and Marc Levinson
Cantor Jessica Levitt
Stephanie and Mark Lurie
Helen Mackler
Ellen and Wendell Maddrey
Jodi and Art Meisler
Lee Guest-Moore and Kenneth Moore
Susan Levine and Robert Moreines
Debby and Harvey Morginstin
Jill and Scott Nadison
Steven Nagourney
Elinor Neifeld
Gail Neldon

Sherri Neuwirth
Susan Nucci
Debbie Lasday and Brian O'Reilly
Ilana and David Peknay
Harriet Perlman
Nisa and Michael Peroff
Laurie and Mark Perwien
Bobbi Brown and Steve Plofker
Belinda Plutz
Roberta and Richard Polton
Jody and Mark Rakov
Marisabel and Jerome Raymond
Ellen Ziff-Resnick and Ira Resnick
Judith and Robert Rich
Lois Ring
Sharon and Stephen Rosen
Kathy and Robert Rosenberg
Tamara Friedman and Dan Rosenblum
Lois and Bernard Rosenkrantz
Kent Roth
Ruth and Don Sarlin
Sarah and Roger Segal
Sisterhood of Temple Ner Tamid
Elena Sokolow
Paula and Robert Stein
Roselle and Eric Stern
Inge Strauss
Susan Weinstock and Roy Suskin
Seymour Taffet
Nina and Richard Tucker
Deyna and David Vesey
Denise and Ira Wagner
Maddie and Larry Weinstein
Tamar and Emil Weiss
Judy and Josh Weston
Lisa and Larry Westreich



SHABBAT SHIRAH

HALLEL: A CELEBRATION IN SONG

Join Cantor Levitt and the Temple Ner Tamid Choir for Shabbat *Shirah* on January 17 at 8 pm. They will share the words and melodies of *Hallel* in a variety of arrangements and styles.

the back page

Shoresh Open House

Tuesday, January 14
10-11:30 a.m.

Thursday, January 16
7:30-9:00 p.m.

SHORES PRESCHOOL

why Shoresh?

- 2 year, 3 year and Pre-K Classes
- Mommy and Me
- Full and Half Day Programs
- Enriched Jewish Curriculum
- Class Trips
- Music
- Computers
- Holiday Celebrations
- Summer Play Camp



Director Joan Goodman

come in or call (973) 338-1500

TEMPLE NER TAMID
936 Broad Street
Bloomfield, New Jersey 07003

Klau Library
Hebrew Union College
Jewish Institute of Religion
3101 Clifton Avenue
Cincinnati, OH 45220

