



THE JACOB RADER MARCUS CENTER OF THE
AMERICAN JEWISH ARCHIVES
A DIVISION OF HEBREW UNION COLLEGE – JEWISH INSTITUTE OF RELIGION

MS-630: Rabbi Alexander M. Schindler Digital Collection, 1961-1996.
Series A: Union of American Hebrew Congregations, 1961-1996.

Box
2

Folder
10c

Camps [miscellaneous], 1982-1992.

For more information on this collection, please see the finding aid on the
American Jewish Archives website.



Union of American Hebrew Congregations

838 FIFTH AVENUE, NEW YORK, N. Y. 10021

Telephone (212) 249-0100

Founded in 1873-5633

Contact:—*Gunther Lawrence*

Weekend (212) 866-2757

FOR IMMEDIATE RELEASE

REFORM JUDAISM LAUNCHES RECRUITMENT DRIVE FOR NEW KIBBUTZ IN ISRAEL

NEW YORK, NY -- The first "shaliach" (Hebrew for emissary) ever to be sent from Israel to recruit American youths to live and work on a kibbutz dedicated to the propagation of Reform Judaism has initiated his drive in this country.

He is Michael Langer, 40, a former Canadian who has been active in the Zionist youth movement for several years. He represents the kibbutz (settlement) movement in Israel and is working here through the youth division of the Union of American Hebrew Congregations, congregational body of Reform Judaism in the United States and Canada. The UAHC represents 715 synagogues and more than 1.1 million congregants.

In seminars and other appearances before American Reform youth groups, Langer is seeking young Jews between 18 and 24 for preparatory training and education programs. Such preparatory groups are scheduled to depart for Israel in September of this year and of 1976 and 1977. The groups will affiliate with a nucleus from the Israeli Reform movement that is settling the Reform kibbutz in the rugged southern Aravah region which extends from the Red Sea to the Dead Sea.

Recruitment is taking place throughout the world for the express purpose of establishing the first permanent community anywhere gov-

erned by the principles of Reform Judaism. This liberal movement has taken hold in Israel, where the official state religion is Orthodox Judaism, to the extent that a Reform rabbinic school, synagogue and other activities have been initiated. Also, 23 native-born Israeli youths are participating in the Reform kibbutz program.

Those youths who are unable to join either the Israeli or American group at present, but who are interested in learning more about the kibbutz way of life may enroll for a trial period of three months to a year on an established kibbutz. Academic credit is given for the trial-year program.

In the past several months, brochures explaining the program have been distributed to all Reform youth groups of high school and college ages. Candidates selected to live in Israel under any of the plans offered will study the language and aspects of life on a kibbutz; and they may participate in the agricultural and industrial development of the pilot kibbutz.

The project grew out of a dialogue between members of the Central Conference of American Rabbis and leaders of several kibbutz movements, who conducted joint conferences since 1971.

Rabbi Stephen Schafer, director of the UAHC's Youth Division, emphasized that Langer's assignment was a result of the intensification of the UAHC's Youth Division's Israel programs.

"We are convinced," Rabbi Schafer said, "that an Israel experience should be a normal part of Jewish education. Langer's presence will make possible better preparation and better follow-up for these programs."

#

4/9/75



איחוד
ליהדות
מתקדמת
באמריקה

Union of American Hebrew Congregations

PATRON OF HEBREW UNION COLLEGE - JEWISH INSTITUTE OF RELIGION
838 FIFTH AVENUE, NEW YORK, N.Y. 10021 (212) 249-0100 CABLES-UNIONUAHC

to ASB

YOUTH DIVISION

Rabbi Allan L. Smith, Director

June 18, 1990

Memorandum to: Executive Staff at all UAHC Locations

From: Rabbi Allan L. Smith

Re: Youth Emergency Situations

This summer approximately 8,000 young people will attend an event sponsored by the UAHC. Some will attend for an eight week camp session others for a week end conclave. No matter, they will be under our supervision and 100% our responsibility, particularly in the areas of HEALTH AND SAFETY.

Every year there are a number of incidents with which we are confronted. Hopefully they are minor and of little account. But there is always the potential for a serious incident or for a reaction which will make a minor incident appear serious and hence have almost all of the same implications for the UAHC.

It is most important that we all react in accordance with a set protocol. UAHC Camp Directors and the Youth Division National Staff have been trained to respond in accordance with a very specific set of guidelines set down by a group of outside professional consultants. While at times we might question these, they are established to be in the best interests of all involved. Therefore we appeal to you to make sure that when you are involved in or learn of an incident the following be your order of action:

1. Provide for appropriate first aid attention
2. Isolate the group from outside contact for the moment
3. Contact the nearest Camp Director or UAHC Youth Division National Staff at Katz Camp (914) 986 1174, twenty four hours, seven days from June 10 - Labor Day.

Because of recent incidents, we realize that it is essential for everyone to have a copy of the protocols in writing. This will be prepared as soon as possible. Thanks for your assistance.

Have a great summer.

Shalom,

Smitty

MEMORANDUM

Date May 4, 1970From Rabbi Alexander M. SchindlerTo Al VorspanCopy for information of Alex Ross, Rabbi Leonard SchoolmanSubject Resolution on Drug Legislation to the Presented to Board

Alex Ross, as you know, is anxious to introduce a resolution at our Board meetings which would urge the legalization of marijuana. Our "experts" voiced some caution on this score. They felt that we ought to wait for the results of extensive experimentation in this realm, the results of which should be known "within the next several years."

My own inclination is to move ahead in this direction nonetheless, at least to the extent of urging the removal of penalties for its use and possession.

I feel, further, that our recommendations on this score should be treated within the context of drug legislation generally, and that some sort of omnibus resolution on this subject be prepared. Legislative excesses obtain not just in cases involving marijuana.

Some of the following points (among many more, I suppose, but these are all I can think of) ought to be made:

- Drug laws should separate drugs according to their respective effects on the mind and body and provide different and appropriate penalties for each. Such drugs as marijuana and LSD should not be lumped together. Nor should the hallucinogens be lumped in one with the opiates and the amphetamines-barbituates.
- The focus on the law should be on the attempt to destroy illegal traffic at its source, rather than on the imposition of stringent penalties on the user. This applies to all drugs, and not just to marijuana. Even the possession and use of "hard" drugs should be only a misdemeanor and not a felony.
- Since education and medical treatment rather than the threat of penalty is effective as a preventative in this realm the law should provide alternatives to jail for the use and possession of any drug. The court should be given the power, or even encouraged, to order medical or psychiatric treatment instead of jail or fine.
- Legislative excesses which set a penalty for being present where drugs are kept -- knowingly or not -- should obviously be eradicated. Such laws make party-going too hazardous a past-time.
- Regulations regarding the manufacture, distribution and general traffic of drugs can be as restrictive as the state desires. Greed cannot be treated by medicine, but usage can.

MEMORANDUM

Date May 4, 1970 - pg. 2

From Rabbi A.M. Schindler

To _____

Copy for information of _____

Subject _____

- Drug laws should also include the mandate that drug education be made part and parcel of the educative process on all levels...The Connecticut drug law, incidentally, has such a section, insisting, interestingly enough, that the effect of alcohol and controlled drugs be taught from the fifth grade on.
- Not only Federal legislation but the state laws ought to be revised, as is always the case. In most cases they are worse. Connecticut's law is pretty damned good, so I am told. You might have Marvin take a look at it.

That's about the size of it.

Very nice conference. Thanks to you and Lenny.

How could this come to the floor at the Board? Ted has an interesting idea. Since drug laws are used as weapons against dissenters, the dissent conference could make such a recommendation (or recommend that the Board ask the Commission to look into this). The Social Action Commission could make a direct recommendation, I suppose.

Reform 1982-3
Movement Leadership
YEAR IN ISRAEL



general catalogue

machon



**Reform 1982-3
Movement Leadership
YEAR IN ISRAEL**


sponsored by the
UNION OF AMERICAN HEBREW CONGREGATIONS,
HEBREW UNION COLLEGE-JEWISH INSTITUTE OF
RELIGION AND JOINT PROGRAM FOR JEWISH
EDUCATION OF THE STATE OF ISRAEL

TABLE OF CONTENTS

DESCRIPTION OF THE PROGRAM	1
ADMINISTRATION	2
HEBREW UNION COLLEGE-JEWISH INSTITUTE OF RELIGION	3
HAYIM GREENBERG INSTITUTE	4
FEES	4
SUBSIDIES, SCHOLARSHIPS/PAYMENTS, TOURING	5
FLIGHTS, HEALTH INSURANCE	6
ELIGIBILITIES AND REQUIREMENT FOR ACCEPTANCE	7
STAFF AND SUPERVISION	7
FACULTY	7
TENTATIVE MACHON CALENDAR	8
SAMPLE WEEKLY SCHEDULE	9
ACADEMIC PROGRAM	10
THE GOAL OF THE PROGRAM	10
COURSE LISTING	10
REFORM LEADERSHIP PROGRAM (MACHON) 1982-1983	13
ACADEMIC ADVISORS	15
HEBREW UNION COLLEGE	15
OLIN SANG LIBRARY	16
HAYIM GREENBERG HEBREW COLLEGE LIBRARY	16



DESCRIPTION OF THE PROGRAM



The MACHON: Reform Leadership Program in Israel is a joint program of the Union of American Hebrew Congregations and the Hebrew Union College-Jewish Institute of Religion, under the sponsorship of the Joint Program for Jewish Education of the State of Israel: Ministry of Education and Culture, the Jewish Agency for Israel and the World Zionist Organization. The nine month academic and touring program will begin in September of 1982 and continue until May 28, 1983. The academic responsibilities for the program are under the supervision of the Hebrew Union College Biblical and Archaeological School in Jerusalem. All transcripts for the 36 credit program will be issued by the Hebrew Union College, a member of the Middle States Association of Colleges and Secondary Schools, the Western Association of Schools and Colleges and the North Central Association of Colleges and Secondary Schools. The Machon group will reside at the facilities of the Hayim Greenberg Institute in Jerusalem. The group will consist of approximately 40 participants from the United States and Canada.

Program participants will spend the first four months at the Hayim Greenberg Institute in Jerusalem. During this period they will focus on Hebrew Ulpan with courses in History, Political Science, and Sociology. There will be, during this semester, one vacation period, one major tiyul (touring period), and various field trips around the Jerusalem vicinity. In addition, participants will be required to attend a number of two and three day seminars on various topics ranging from the Mid-East Conflict to the Holocaust. Participants will enroll in elective courses in Leadership, Education and various cultural areas. In December, the group will depart for a one month program at Kibbutz Yahel, Israel's only Reform Jewish Kibbutz, in the Negev, followed by a tiyul through the desert. Following a short vacation, the participants will return to Jerusalem for the second semester, con-

sisting of courses in Hebrew Literature and Language, Basic Judaism, Bible, History, and Sociology. Once again the group will have a vacation and touring periods. A number of Shabbat experiences will be spent as a group visiting sites of interest in Jerusalem.

The daily schedule will run from Sunday through Thursday from 8:00 a.m. through 4:00 p.m., with a two-hour lunch break. Fridays and Saturdays will be free with opportunities to participate in volunteer programs, tours and the like.

REFORM LEADERSHIP TRAINING PROGRAM

David Forman, Director

HUC-JIR, JERUSALEM

Michael L. Klein, Dean

Paul R. Feinberg, Coordinator,
MACHON Academic Program

Hannah Shennar, Coordinator,
Hebrew Studies

Hilda Friedman, Registrar

HAYIM GREENBERG COLLEGE

Arie Ouriel, Dean

Chava Kwiatkowski,
Program Director

WORLD ZIONIST ORGANIZATION

Eliezer Tavin, Chairman, Dept. of
Education and Culture in the Diaspora
Michael Kleiner, Director General,
Dept. of Education & Culture in
the Diaspora

UNION OF AMERICAN HEBREW CONGREGATIONS

Stephen A. Schafer, Director Youth Division
Allan L. Smith, Associate Director Youth Division

UNITED STATES

Avram Arian, Director
NFTY

Judith Reichenbach, Coordinator
Israel Programs

Paul J. Reichenbach, Director
Administration Israel Programs

Larry Tishkoff, Director
College Activities

ISRAEL

Henry F. Skirball, Director
Youth Programs in Israel

Allan Levine, Director
Youth Activities in Israel

David Forman, Associate Director
Youth Programs in Israel

HEBREW UNION COLLEGE- JEWISH INSTITUTE OF RELIGION

The Hebrew Union College-Jewish Institute of Religion, founded in 1875, is the institution of higher learning in American Reform Judaism. The four campuses of the College Institute, located in New York, Cincinnati, Los Angeles, and Jerusalem offer Bachelors, Masters, and Doctoral Programs in Education, Communal Service and Jewish Studies. Each school trains candidates for ordination as Rabbis and investiture as Cantor. The Hebrew Union College-Jewish Institute of Religion is accredited by the following agencies:

Middle States Association of Colleges and Secondary Schools
Western Association of Schools and Colleges
North Central Association of Colleges and Secondary Schools

The Hebrew Union College Biblical and Archaeological School in Jerusalem, Israel is located on King David Street where many of the courses of the MACHON will be taught and the institution which is responsible for the academic program.

The Jerusalem school has two departments, the Nelson Glueck School of Biblical Archaeology and the School of Jewish Studies. The School of Archaeology is an American Center for post graduate study in the field of Bible Archaeology and History of ancient Israel. The School of Jewish Studies serves all entering rabbinic and education students of the College Institute and undergraduates from various programs of the College Institute and the Union of American Hebrew Congregations. It provides a full range of academic services and courses in the area of Near Eastern and Judaic Studies in the Humanities and Social Sciences.

HAYIM GREENBERG INSTITUTE

The Hayim Greenberg Institute, a college under the supervisions of the Ministry of Education and Culture of the Jewish Agency, has specialized in training teachers from the Diaspora, for over twenty-six years. It was originally housed in a building on Reuven Street in the Bakka section of Jerusalem, and later expanded its campus to three buildings in adjacent Shimshon Street.

In 1980 the Institute moved to totally new facilities at Kiryat Moriah, approximately 1½ miles from the center of Jerusalem, adjacent to the suburb Talpiyot. The campus has easy access to all parts of Jerusalem via inexpensive public bus routes. The campus consists of three new buildings, a dormitory, a classroom building and a dining hall.

The dormitory facility contains living accommodations of double rooms, full bathroom facilities, meeting rooms and a library. The facilities are centrally heated and accommodations are comfortable, especially by Israeli standards.

The dining hall provides three wholesome meals per day, on a full food plan which is included in the tuition fees. Unique among Israeli colleges, Hayim Greenberg Institute has a full dining room staff who plan and cook all meals, so that students need not waste valuable time doing their own shopping, cooking, and clean-up.

FEES:

The tuition for the 1982-83 season will be \$3,300.00* This sum includes:

Round Trip Airfare (New York-Tel Aviv-New York)

Tuition

Room and Board

Touring

Kupat Holim (Health Insurance)

Materials, supplies and personal incidental expenses will be extra. It is anticipated that the participant will require an additional \$100.00 per month for books and supplies, laundry, recreation, and miscellaneous expenses.

*This fee is based on current airfares and land costs in Israel (December 1981), and is subject to change. Scholarships are available.

SUBSIDIES:

Each participant is eligible for two subsidies. For those applicants who have been active as Reform youth leaders and counselors at our summer camps a \$500 subsidy is available but contingent upon the applicant's participation in the UAHC summer camp program following completion of the program. This subsidy is payable at the discretion of the individual camp and/or camp director prior to departure.

For all applicants subsidies are available upon formal application and commitment to participate in Reform youth activities upon completion of the program. These subsidies are sponsored by The Joint Program for Jewish Education of the State of Israel: Ministry of Education and Culture, the Jewish Agency for Israel and the World Zionist Organization.

SCHOLARSHIPS: For those with a proven financial need, a Financial Aid Program is available. Consideration will be given upon submission of a request for a Financial Aid Form.

PAYMENTS: A \$250.00 deposit (refundable) is required with application. An additional \$1,000 is required by July 15, 1982. Final payment is required by August 1, 1982.

TOURING: While in Israel there will be an extensive touring program as well as smaller field trips and an archaeological "dig." There will be three major tours to the Desert, Western Galilee, and Eastern Galilee including the Golan Heights. In addition, there will be an extensive program touring all sites in and around the city of Jerusalem. Field trips will be conducted to such sites as: Masada, Ein Gedi, Gush Etzion, Hebron, Jericho, Tel Aviv, Jaffa, Ashdod, Ben Shemen Youth Village, Kibbutz Tsora, Abu Gosh, Druze Villages, Rehovot, and all principal sites of the country.

FLIGHTS

Included in the tuition fee is round-trip airfare. New York-Tel Aviv-New York, via scheduled air carriers. Special fares may be available to and from New York, and the UAHC International Education Department will assist in arranging these, where applicable.

HEALTH INSURANCE

While in Israel participants will be covered by Kupat Holim, a health fund. This entitles participants to clinic facilities (doctors), medicines, and hospitalization which does not arise from either a pre-existing condition or an automobile accident. Often participants may want to see a private physician which can be arranged by our staff in Israel, but will require payment by the participant. The cost of such visits approximates costs in the U.S.

ELIGIBILITY AND REQUIREMENT FOR ACCEPTANCE

Eligibility: Applications will be accepted from individuals who will have a High School Diploma by June of 1982.

Requirements for Acceptance: In general an applicant should have been a participant in the Jewish community through his/her high school years. The applicant must be willing to accept a leadership role within the Jewish community upon return. Upon return the applicant should be willing to accept part-time positions in the camping movement of the UAHC or in the youth or education fields in their local communities. Applicants should have exhibited leadership potential and be of good academic standing.

All applicants will be required to be interviewed by a representative of the UAHC Youth Division. In addition the applicant must submit all required applications, including a required personal essay, health forms and three recommendations. The recommendations are most important. Of the three required one must be from either a UAHC camp director or youth advisor. One must be from the applicant's local rabbi. The third recommendation may come from a guidance counselor or faculty member.

All applicants must submit transcripts from their present schools. College freshmen are required to submit high school transcripts as well. A refundable \$250.00 deposit is required with the applications. Individuals will be informed of their acceptance within one month of completion of the application process.

STAFF AND SUPERVISION

The Administration of the program in Israel will consist of a director of the program, an academic dean, an administrative director, a coordinator, two resident counselors, and a Reform Movement leadership consultant.

FACULTY

<i>Yehudah Amihai,</i>	B.A. (Hebrew University); Lecturer in Hebrew Literature, Hayim Greenberg Hebrew College, Jerusalem.
<i>Menahem Amir,</i>	Ph. D. (U. of Pennsylvania); Associate Professor Criminology, Hebrew University, Jerusalem.
<i>Janet Aviad,</i>	Ph.D. (Columbia University); Lecturer in Jewish Education, Hebrew University.
<i>Yehuda Bohrer,</i>	Ph.D. (Yeshiva University); Lecturer in Jewish History, Hebrew University and Hayim Greenberg Hebrew College.
<i>Mordechai Cogan,</i>	Ph.D. (U. of Pennsylvania); Chairman, Bible Studies, Ben Gurion University, Beer Sheva.
<i>Paul R. Feinberg,</i>	Rabbi, M.A.H.L. (HUC-JIR); Coordinator, MACHON Academic Program.
<i>Elazar Goelman,</i>	Ph.D. (Dropsie College); Professor of Jewish History Hayim Greenberg Hebrew College.
<i>Rivka Haramati,</i>	B.A. (Hebrew University); Hebrew Teacher, Hayim Greenberg Hebrew College.
<i>Shlomo Haramati,</i>	Ph.D. (Columbia University); Senior Lecturer in Jewish Education, Hebrew University.
<i>Gideon Hausner,</i>	M.A. (Hebrew University); Advocate (British Mandate Government Law School); Lecturer in Law, Hebrew University.
<i>Eliezer Jaffa,</i>	D.S.W. (Case Western Reserve); Associate Professor, Paul Baerwald School of Social Work, Hebrew University.

Ellie Katz,	Ph.D. (New York University); Guest Lecturer, Hayim Greenberg Hebrew College.
Michael L. Klein,	Ph.D. (Hebrew University); Dean, Associate Professor of Aramaic & Rabbinics, HUC-JIR, Jerusalem.
Mordechai Levine,	M.A. (Hebrew University); Hebrew Teacher, Hayim Greenberg Hebrew College.
Meron Medzini,	Ph.D. (Harvard University); Lecturer in Political Science, Hebrew University and Tel Aviv University.
Mark Rittenberg,	M.A. (San Francisco State University); Associate Professor of English as a Foreign Language, U. of San Francisco; Director, Jerusalem Drama Workshop.
Henry F. Skirball,	Rabbi (HUC-JIR); Ed.D., Columbia University; Director, Youth Programs in Israel, UAHC.
Ephraim Yahav,	B.A. (Hebrew University); Hebrew Teacher, Hayim Greenberg Hebrew College.

TENTATIVE MACHON CALENDAR 1982-1983

September 3	Arrival
September 3-5	Orientation
September 6	Fall Semester Begins
September 18-20	Rosh Hashana
October 2	Sukkot
October 14-16	Negev Tour, followed by Shabbaton
October 26-27	Yom Kippur
November 13-17	Tour—Western Galilee & Eastern Galilee
December 24	End of Fall Semester
December 27-31	Desert Tour
January 1-February 15	Kibbutz Yahel
February 15-21	Vacation
February 22	Spring Semester Begins
February 27	Purim
March 28-April 4	Pesach Vacation
May 28	Spring Semester Ends

SAMPLE WEEKLY SCHEDULE

Hours	Sunday	Monday	Tuesday	Wednesday	Thursday	Friday	Saturday
8:00-9:00	Ulpan	Ulpan	Ulpan	Mod. Hebrew Lit	Ulpan	Volunteer Work	Free
9:15-10:00	Ulpan	Ulpan	Ulpan	Mod. Hebrew Lit	Ulpan	Or	Free
10:15-11:00	Ulpan	Ulpan	Mod. Jewish Thought	Ulpan		Free	Free
11:15-12:00			Mod. Jewish Thought	History	Bible	Free	Free
12:15-1:00				History	Bible	Free	Free
1:15-2:00	Lunch	Lunch	Lunch	Lunch	Lunch	Free	Free
2:15-3:00				Polisci	Elective	Free	Free
3:15-4:00	Pedagogy		Leadership Dynamics	Polisci	Elective	Free	Free
4:15-5:00		Elective	Leadership Dynamics			Free	Free
5:15-6:00		Elective				Free	Free

ACADEMIC PROGRAM

The academic program consists of core courses (required for all participants) and elective (participants select two of six offerings). All courses meet 15 class hours per credit (as given in descriptions, below). Course outlines and faculty names are tentative, subject to final approval. Transcripts and credits are issued by the Hebrew Union College-Jewish Institute of Religion, New York School. In addition to the formal class room program the MACHON: Reform Leadership Program includes a variety of required one and two day seminars, as described elsewhere in this catalogue, and touring programs which are educational in nature.

Courses are spread over two academic semesters of about fourteen weeks each, like the American semester system. All courses, in addition to classroom lecture and discussion, will require library work, readings, papers and examinations at the discretion of the individual instructors.

The sample weekly schedule given on p. is a sample only, and is not final. Sample Syllabi for most courses are available on request for examination by appropriate academic authorities at applicant's universities.

THE GOALS OF THE PROGRAM

The academic program has four basic goals, each of equal importance:

1. The acquisition of Hebrew language skills;
2. Introduction to modern Israel—and to the sources of Israel's history;
3. Living experience in Israeli society;
4. The acquisition of Leadership and Education skills.

COURSE LISTING

HEBREW LANGUAGE ULPAN — 12 credits; R. Haramati, M. Levine, E. Yahav.

Objectives: ability to converse in Hebrew, understand Hebrew lectures, read newspapers and selections from modern Hebrew literature, write elementary compositions in Hebrew. Ability to read accurately and with comprehension narrative Biblical texts. To obtain a grounding in some rabbinic literature.

Implementation: The ulpan is generally divided into two levels to accommodate the varied Hebrew backgrounds of in-coming students. After initial placement, changes may be made during the first weeks upon recommendation of the Ulpán teachers. This is done in order that each student may work at a level which is sufficiently challenging without producing frustration. Should you feel you have been placed in a class too high or too low, you may request a shift up or down.

In addition to the intensive classroom language studies, the student is required to also spend additional hours preparing for each session.

HEBREW LITERATURE I — 3 credits: Y. Amichai

Selected readings in medieval and modern Hebrew literature in the original and in English translation. The modern poetry and prose will illustrate the major ideas and trends of pre-State as well as contemporary Israeli thought.

The course will consist of class discussions, short papers, and dialogue with Israeli authors.

HEBREW LITERATURE II — 3 credits: Y. Amichai

Continuation of Hebrew Literature I on a more advanced level, with major emphasis on Modern Hebrew Poetry.

SURVEY OF THE HISTORY AND LITERATURE OF THE HEBREW BIBLE — 3 credits; M. Cogan

Objectives: To develop a familiarity with the Bible through selective readings. The course will give the student a foundation in Biblical literature and history.

Implementation: The lectures will be given in English, and will be supplemented by a field trip to several major Biblical sites in the Jerusalem area.

HISTORY OF MODERN ISRAEL AND THE HOLOCAUST — 3 credits; E. Goelman, G. Hausner

A survey of the history of Modern Israel from the rise of Zionism in Europe to modern times; Jewish and European roots of the Zionist idea; Jewish settlement in Palestine under the Turkish and British rule; struggle for national independence; development of the State of Israel.

The course will also include an examination of economic, social, and political conditions leading to the destruction of European Jewry. Field trips: Yad Vashem and Bet Hatefutzot museums.

GOVERNMENT OF ISRAEL: STRUCTURE AND POLICIES — 3 credits; M. Medzini

The structure and process of Israel's governmental institutions; national, regional and local, legislative, executive, and judicial. Study of quasi-governmental institutions: Jewish Agency, Histadrut, moshav, and kibbutz organizations. Attention to the power structure of Israel's society; Israel's foreign policy; Israeli-Arab conflict, the Mediterranean sphere, relationship to the USA, USSR, and Europe.

Field trip: The Knesset (Israel Parliament)

JERUSALEM THROUGH THE AGES — 3 credits; instructors to be announced

A survey of Jerusalem prior to David's conquest to the present. The First Temple period and the foundation of its religious significance: destruction and return; from the second destruction to the Aelia-Capitolina; religious significance to period of the Old Yishuv, British Mandate and the riots in Jerusalem; Six-Day War and battle for Jerusalem; East Jerusalem, political and demographic issues.

Field trip will accompany each lecture.

METHODOLOGY OF TEACHING I — 3 credits; S. Haramati, E. Katz

This course will stress the psychology and philosophy of education with special emphasis on the acquisition of the fundamentals and formal educational setting, i.e., religious school, Hebrew school. The course includes field trips to Israeli educational institutions.

METHODOLOGY OF TEACHER II — 3 credits; M. Rittenberg

The goal of this course is centered on practical training in the area of informal education. Emphasis will be placed on the acquisition of methods of education and leadership as related to Temple Youth Groups, Camp programming, Campus activities. An integral part of the course will include drama, group work, and creative projects as tools of educational methods. The course will also include the designing of an educational project.

POST BIBLICAL JUDAISM — 3 credits; P. Feinberg, H. Skirball

To acquaint the student with the historical development of Basic Jewish concepts and traditions, with accompanying texts. The course will study in depth both traditional and liberal forms of expression, as well as offer a full study of the holidays and life-cycle. Field trips will be included.

SOCIOLOGY OF MODERN ISRAEL — 3 credits; M. Amir, J. Aviad, E. Jaffe

The aim of this course is to provide an understanding of some of the major problems facing contemporary Israeli society. Particular attention will be paid to three issues: Israel as a land of immigrants, as a nation at war, and as a Jewish society. The course will offer an analysis of the problems and, wherever possible, a description of the various ways with which they are being dealt. Field trips will be included in order to allow the student to observe first hand the subjects studied in lectures and discussions.

GRADING SYSTEM

The grading system for the MACHON Program is transcribed for accreditation in colleges and universities in the United States as follows:

90%-100%A
80%- 89%B
70%- 79%C
60%- 69%D

Each teacher will determine the requirements for his or her course.

REFORM LEADERSHIP PROGRAM (MACHON)

1982-1983

CREDITS

It is possible to earn a total of 36 credits for the year (30 for the required courses and 6 for Elective courses).

The courses and credits are as follows:

REQUIRED	Semester	Credits
Hebrew language	F & S	13
Survey of the History & Literature of the Bible	F	3
History of Modern Israel and the Holocaust	F	3
Hebrew Literature I	F	3
Post Biblical Judaism	F & S	3
Methodology of Teaching I	F & S	3

Methodology of Teaching II	F & S	3
----------------------------	-------	---

ELECTIVES (One Elective is required each semester)

Jerusalem Through the Ages	F	3
Sociology of Israel	F	3
Government of Israel	S	3
Hebrew Literature II	S	3

WITHDRAWAL

All students are automatically enrolled in the full program of studies. Students who wish to drop a course may do so only by submitting written notice at least two weeks before the last session of the course.

There are two exceptions to the above ruling:

1. *Hebrew Language*: This course is required of all students for the full length of the program.
2. *Methodology of Teaching*: This course is required of all students for the full length of the program.

All withdrawal requests must be submitted in writing to Rabbi Paul Feinberg. In addition to containing the student's signature, a withdrawal request must also be signed by the course instructor.

PASS OR FAIL

Students may opt for "Pass" or "Fail" rather than a letter grade—but must indicate such preference at the outset of the course. Unless a formal letter indicating such preference is received by Rabbi Feinberg no later than 2 weeks after the course has begun, a letter grade will automatically be used.

Exception: The *Hebrew Language* course must be taken for a letter grade.

AUDIT

We strongly urge that all students accept letter grades. It is often difficult to receive credit, especially required credit, at a college or university based on Pass.

Once Pass or Fail grade has been issued, it cannot be changed back to a letter grade.

Students who wish to audit a course must decide to do so not later than two weeks before the last session of the course. Auditors will be expected to keep up with assigned readings but will be exempt from written assignments and exams. Requests to audit must be submitted in writing to Rabbi Paul Feinberg.

All course requirements must be completed before the student leaves Israel. Any questions concerning this matter should be discussed with Rabbi Feinberg. Students are cautioned against making end of year travel plans that might conflict with the completion of all academic requirements.

Official transcripts for the MACHON program are issued by the New York or Los Angeles schools of Hebrew Union College-Jewish Institute of Religion, after the grades have been submitted by the Jerusalem school.

INCOMPLETE

ACCREDITATION

ACADEMIC ADVISORS

Dr. Michael L. Klein, Dean, HUC-JIR, Jerusalem
 Rabbi Paul R. Feinberg, HUC-JIR, Jerusalem, Coordinator: MACHON Academic Program
 Mr. Arie Ouriel, Dean, Hayim Greenberg Hebrew College, Jerusalem

HEBREW UNION COLLEGE

The Jerusalem School of Hebrew Union College has many activities scheduled for the year. MACHON students are invited to participate in many of these programs. A listing of special lectures, seminars, discussions, trips, etc. will be made available.

OLIN SANG LIBRARY—Hebrew Union College

During the academic year, early September through the end of May, the library is open to MACHON students during the following hours:

8:00 a.m. to 8:00 p.m.—Monday through Thursday

8:00 a.m. to 12:00 noon—Friday and holiday eves

8:00 a.m. to 5:00 p.m.—Sunday

The Olin Sang Library houses a relatively large collection of works in several related fields. These include large holdings in Old Testament, Biblical Archaeology, Rabbinic literature, Jewish History and Hebrew literature. The library holds 20,000 volumes and receives 100 current periodicals.

HAYIM GREENBERG HEBREW COLLEGE LIBRARY

A general library, located in the dormitory building, is open during the following hours.

Sunday through Thursday—3:00 p.m. to 10:00 p.m.





*for further
information
contact*

AMERICAN JEWISH
ARCHIVES
MACHON
UAHC YOUTH DIVISION
838 FIFTH AVENUE
NEW YORK, N.Y. 10021

TELEPHONE: (212) 249-0100



איחוד
ליהדות
מתקדמת
באמריקה

NFTY in Israel 1984

for Reform Jewish Youth



HIGH SCHOOL SUMMER PROGRAMS

THE NFTY ISRAEL ACADEMY offers an ideal opportunity to explore both ancient and modern Israel: from historic Jerusalem to cosmopolitan Tel Aviv including the thrilling ascent of Masada at day-break, visits to Haifa, Galilee, a camping trip in the desert, a swim in the Dead Sea and much more. Living and working as volunteers on kibbutz is one of the highlights of this exciting summer experience.

Cost from New York: \$2,300* 6 weeks**
Departures commencing mid June through mid July
Eligibility: 16-18 years old

LOCALLY FORMED ISRAEL ACADEMIES are programs similar in content to the general NFTY Israel Academy but consist of participants from specific synagogues, geographic areas or NFTY regions. Many confirmation classes, NFTY regions (NEFTY, SCFTY, CFTY, etc.) and UFAHC camps organize summer academy programs through NFTY. If you would like to join or organize a locally formed group, please contact our office for information.

Cost from New York: \$2,300* 6 weeks**
Departures commencing mid June through mid July
Eligibility: 16-18 years old

NFTY's ISRAEL SAFARI consists of a touring program similar to that of the NFTY ISRAEL ACADEMY including visits to all major sites. Instead of kibbutz, the SAFARI program will discover the beauty of Israel through nature. Including time at a renowned Israeli field school exploring geology, geography, animal and plant life unique to Israel. Camping, hiking and special seminars highlight this program.

Cost from New York: \$2,425* 6 weeks**
Departure early July
Eligibility: 15-18 years old

NFTY ARCHAEOLOGICAL DIG IN ISRAEL enables students to participate in actual archaeological excavations coupled with a complete touring program visiting all major cities, a camping trip, and outstanding archaeological sites throughout Israel. Archaeological seminars and field laboratory work supplement the actual excavations.

Cost from New York: \$2,425* 6 weeks**
Departure early July
Eligibility: 16-18 years old



IMPORTANT NOTE FOR ALL PROGRAMS

*ALL COSTS ARE BASED UPON ROUND-TRIP YOUTH AIR FARES FROM NEW YORK AND LAND COSTS IN ISRAEL AS OF OCTOBER 1, 1983 AND ARE SUBJECT TO CHANGE.

**PROGRAM DURATIONS ARE APPROXIMATE AND ARE SUBJECT TO CHANGE.

THE NFTY MITZVAH CORPS IN ISRAEL includes a complete touring program visiting all major sites and cities in Israel, a camping trip in the desert and more. MITZVAH CORPS offers a unique opportunity to work together with Israeli youth in a development town or youth village in self-help and social service programs. The work of MITZVAH CORPS participants will include everything from planning day-camp activities for Israeli children to building playgrounds and harvesting a garden.

Cost from New York: \$2,425* 6 weeks**
Departure early July
Eligibility: 15-18 years old

THE NFTY ULPAN AT BEN SHEMEN is an eight week session designed particularly for Eisendrath International Exchange students to begin their six months in Israel with an intensive study of the Hebrew language. Other students who are strongly motivated to immerse themselves in the Hebrew language are invited to join the Ulpán. Ulpán members live in Ben Shemen agricultural youth village and share social and cultural events there with Israeli youth. The Ulpán program includes tours to all major cities and sites.

Cost from New York: \$2,515* 8 weeks**
Departure early July
Eligibility: 15-18 years old



HIGH SCHOOL LONG TEAM PROGRAMS

THE EISENDRATH INTERNATIONAL EXCHANGE PROGRAM provides opportunities for outstanding high school students to spend a summer and fall semester in Israel. Students experience another culture in depth. The summer session is devoted to an intensive study of Hebrew at the NFTY Ulpán at Ben Shemen. For the fall session students are adopted into Israeli families in cities, development town, youth village or kibbutz and usually attend local high schools with the "brothers" and "sisters" of their adopted family. Whenever possible, there is participation in the youth activities of Israeli Reform congregations. The E.I.E. program includes trips to Jerusalem, the Galil, a desert camping trip and work at Kibbutz Yohel.

Cost from New York: \$3,625* 6 months**
Departure early July
Eligibility: completed 10th grade
Optional extension for full year

POST HIGH SCHOOL & COLLEGE SUMMER PROGRAMS

COLLEGE ISRAEL ACADEMY is a program similar in content to the NFTY ISRAEL ACADEMY but designed specifically for college age students. Here is a wonderful opportunity to explore ancient and modern Israel with other college students from across North America.

Cost from New York: \$2,300* 6 weeks**
Departures commencing mid June through early July
Eligibility: college students and high school graduates



POST HIGH SCHOOL & COLLEGE LONG TERM CREDIT & NON-CREDIT PROGRAMS

THE ISAAC MAYER WISE "INSIDE ISRAEL" PROGRAM offers a semester in Israel (February-June) during which students reside for 2½ months with Israeli families in Jerusalem and two months living and working at Kibbutz Yohel. 12 optional college credits are granted for academic courses taken while in Jerusalem. Participants will tour the length and breadth of the land, visiting all major cities and sights as part of the program. Seminars dealing with the history, sociology and politics of modern and ancient Israel are integrated into the semester.

Cost from New York: \$2,500*
Departure early February, 1984
Eligibility: high school graduates or college students



MACHON: REFORM MOVEMENT LEADERSHIP YEAR IN ISRAEL co-sponsored by the Hebrew Union College-Jewish Institute of Religion and the UFAHC Youth Division for college students and high school graduates. The MACHON combines a year's college level accredited academic work (36 college credits) with in-depth leadership training and a full touring program. LEADERSHIP ORIENTATION: suitability and commitment to Reform Movement youth work required.

Cost from New York: \$3,325* 9 months**
Departure early September, 1984
Eligibility: college students and high school graduates

COLLEGE AND KIBBUTZ: a college academic year program co-sponsored by the Hebrew Union College-Jewish Institute of Religion and the UFAHC Youth Division. Students must have completed at least one year of study at an accredited college/university by September, 1983. Academic courses for 36 college semester credits are offered while students live and work on Kibbutz Tsoro, west of Jerusalem.

Cost from New York: \$3,625* 9 months**
Departure early September, 1984
Eligibility: completed minimum one year of college

THE ACADEMY FOR JEWISH STUDIES, held in Jerusalem, is a program for high school graduates and college students interested in pursuing Judaic studies in a serious and intensive manner. Students will study aspects of the holidays and life cycles via primary biblical, rabbinic, philosophical and modern source material. Worship, community service and field trips included.

Cost from New York: \$3,625* 9 months**
Departure early September, 1984
Eligibility: college students and high school graduates

Eligibility for all programs: Participants must turn minimum age required during calendar year 1984.

NFTY IN ISRAEL

presents the

**An Experience in Israel
For High School Juniors and Seniors**

July-December 1984

AMERICAN JEWISH
ARCHIVE

Eisendrath International Exchange

Sponsored by: NFTY IN ISRAEL For Reform Jewish Youth
UAHC Youth Division
838 Fifth Avenue
New York, NY 10021
212-249-0100

program

NFTY IN ISRAEL presents "The E.I.E. PROGRAM"

The Eisendrath International Exchange Program (E.I.E.), now entering its 24th year, is considered one of the finest student exchange programs offered anywhere in the world. E.I.E. participants are outstanding high school students seeking a total involvement with the language, culture and people of Israel. The E.I.E. Program seeks to develop leadership among our young people, sharpen their awareness of international issues, and foster in them a deep commitment to the development of progressive Judaism and of Israel. This is accomplished through a challenging and exciting living and learning experience. E.I.E. participants complete the program with a fulfilling sense of accomplishment, a heightened sense of Jewish identity, and a close personal connection with the people and the land of Israel.

JULY	Departure for Israel
JULY - SEPTEMBER	Orientation and participation in an intensive specially designed Hebrew study Ulpan at the Ben Shemen Youth Village near Tel Aviv.
	**Extensive travel and touring throughout all of Israel is interspersed throughout the entire six month program.
SEPTEMBER - DECEMBER	E.I.E. students are "adopted" by host families in Jerusalem, Haifa, kibbutzim, and the Ben Shemen Youth Village. Participants attend local and regional high schools with their host "brothers & sisters".

****TOURING INCLUDES:** in-depth exposure to Jerusalem, Tel Aviv, Haifa, the Northern & Western Galilee, the Golan, Ein Gedi, Massada, a special camping trip in the Negev desert, reform Kibbutz Yahel, Jericho, Ashkelon, Acco, Safed, and practically every other site and sight of interest.

Specially designed seminars on a wide-range of topics (Mid-East politics, Holocaust, Zionism, and the history and sociology of Israel) complement the travel program.

ELIGIBILITY: The program is open to qualified high school juniors and seniors.

COST: \$3625* from New York. This includes all meals and lodging, program and touring. Prices are subject to fluctuations in airfare and costs in Israel.

APPLICATION: Coupon is attached. All applications are due by May 1, 1984.

MAIL TO: NFTY IN ISRAEL: "EIE"
UAHC
838 Fifth Avenue
New York, NY 10021

Or Phone: 212-249-0100, ext. 546, 547, 548

Please send me an application and further information on the E.I.E. Program.

NAME: _____ BIRTHDATE: _____
(please print clearly)

ADDRESS: _____ PHONE: () _____

CITY: _____ STATE: _____ ZIP: _____

PRESENT YEAR IN SCHOOL: _____

The UAHC's College Department presents

COLLEGE PROGRAMS IN ISRAEL

Sponsored by:
The Reform Movement's
YOUTH DIVISION
and the Hebrew
Union College-
Jewish Institute
of Religion

Credit and Non-Credit
Summer, Semester and Academic Year

■ UAHC YOUTH DIVISION
838 Fifth Avenue
New York, N.Y. 10021
212-249-0100

The UAHC YOUTH DIVISION presents
ISRAEL PROGRAMS FOR COLLEGE AGE STUDENTS

ACADEMIC YEAR 1984-1985 September to May

MACHON: Reform Leadership Year

Cost: \$3,325.00* from NYC

Age: college students &
high school graduates

Co-sponsored by the Hebrew Union College-Jewish Institute of Religion and the UAHC Youth Division for college students and high school graduates. The MACHON combines a year's college level accredited academic work (36 college credits) with in-depth leadership training and a full touring program. LEADERSHIP ORIENTATION. Suitability and commitment to Reform Movement youth work required.

ACADEMIC YEAR 1984-1985 September to May

COLLEGE & KIBBUTZ

Cost: \$3,625.00* from NYC

Age: completed minimum
one year of college

A college academic year co-sponsored by the Hebrew Union College-Jewish Institute of Religion and the UAHC Youth Division. Students must have completed at least one year of study at an accredited college or university by September 1984. Academic courses for 33 college credits are offered plus a complete touring program while students live and work on Kibbutz Tzora, west of Jerusalem.

SUMMER 1984

The 1984 COLLEGE ISRAEL ACADEMY

Cost: \$2,300.00* from NYC

Age: college students &
high school graduates

Offers an ideal opportunity to explore both ancient and modern Israel: from historic Jerusalem to cosmopolitan Tel Aviv, including the thrilling ascent of Masada at daybreak, visits to Haifa, Galilee, a camping trip in the desert, a swim in the Dead Sea and much more. Living and working as volunteers on kibbutz is one of the highlights of this exciting summer experience.

SPRING SEMESTER 1984 & 5 February to June

I.M. Wise INSIDE ISRAEL Program

Cost: \$2,500.00* from NYC

Age: college students &
high school graduates

Two months of Israeli family life in Jerusalem and 2½ months of challenging work at Kibbutz Yahel. 12 optional college credits granted for college level courses (Hebrew included) taken during the Jerusalem portion of the program. "Inside Israel" includes a complete travel, touring and seminar program. Sponsored with the cooperation of the Hebrew Union College-Jewish Institute of Religion and the American Zionist Youth Foundation.

* All costs are based upon round-trip youth fares from New York and land costs in Israel as of October 1, 1983 and are subject to change.

MAIL TO: UAHC YOUTH DIVISION
838 Fifth Avenue
New York, NY 10021

Or phone: 212-249-0100; ext. 546, 547, 548

Please send me an application & further info on: _____

INSIDE ISRAEL

_____ COLLEGE ISRAEL ACADEMY

_____ MACHON

_____ COLLEGE & KIBBUTZ

NAME: _____

ADDRESS: _____

PHONE: () _____

CITY: _____

STATE: _____

ZIP CODE: _____

PRESENT YEAR IN SCHOOL: _____



UNION CAMP INSTITUTE
ZIONSVILLE, INDIANA

ENROLLMENT REPORT as of May 15, 1973

	<u>5/15/72</u>	<u>Final 1972</u>	<u>Budget 1973</u>	<u>5/15/73</u> <u>BOYS</u>	<u>GIRLS</u>	<u>TOTAL</u>
Kallah I	73	88	105	39	65	104
Kallah II	79	97	105	31	53	84
Chalutzim I			15	10	11	21
Chalutzim II			15	5	6	11
TOTAL	152	185	240	85	135	220

This represents a 44% increase over registration at this time last year.

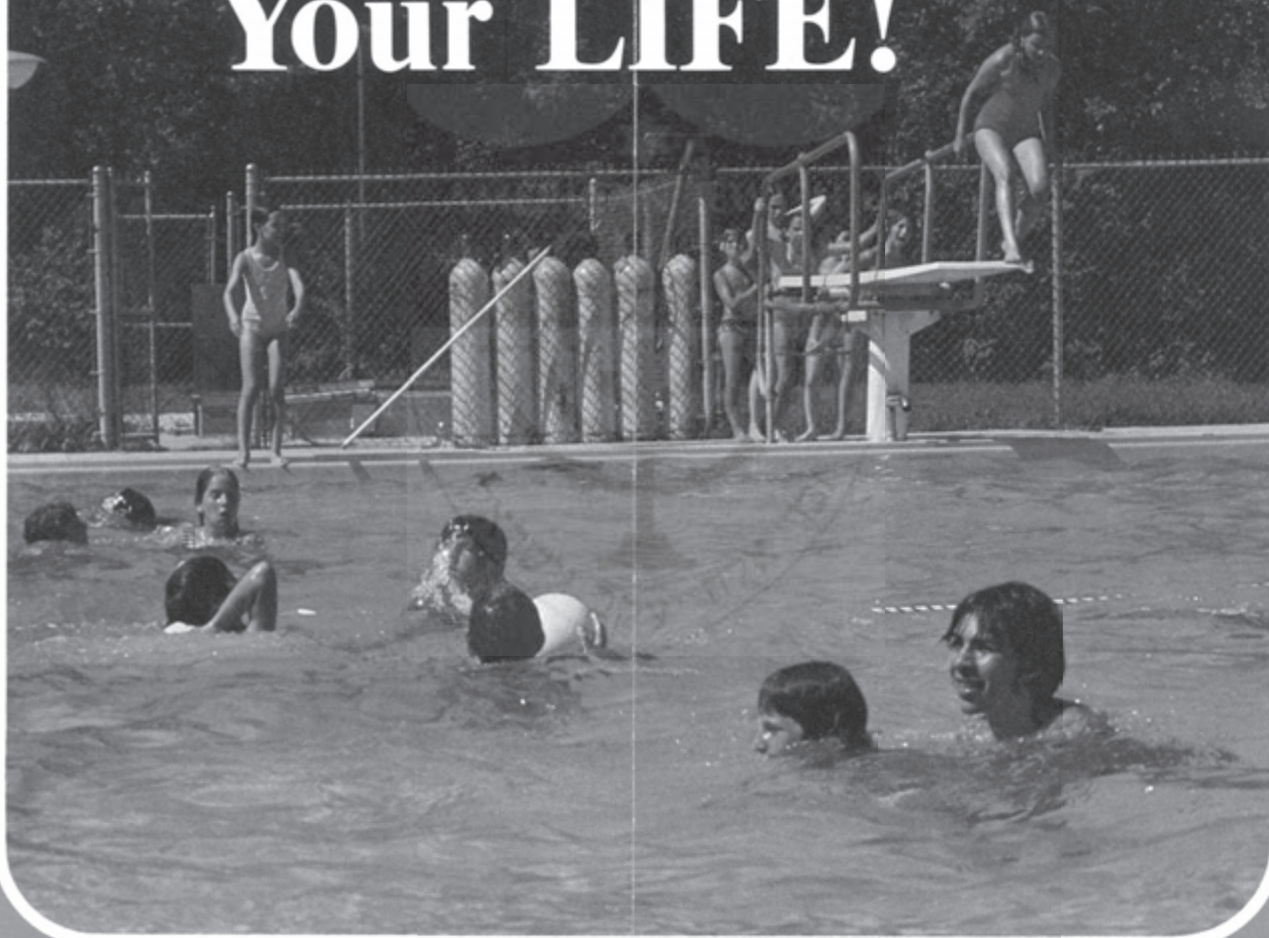
Other enrollment:

	<u>Budget</u>	<u>5/15/73</u>
CIT (paying)	10	12
OVFTY Institute	125	69
OVFTY Leadership	40	6

**We've put it
all together
at Zionsville!**



For the Time of ☆ Your LIFE!



Union of American Hebrew Congregations

Union Camp Institute

ZIONSVILLE, INDIANA

1978 Camp Calendar and Fees

KALLAH

Our program of activities and study for boys and girls, Grades 4 thru 10

Four weeks \$ 520 **

Eight weeks \$1,000 **

Aleph: Sunday, June 18 - Saturday, July 15

Bet: 1:00 P.M., Sunday, July 16 - Saturday, August 12

MACHON (Counselor-in-Training)

An intensive program for boys and girls entering eleventh grade.

Eight Weeks - \$450

Tuesday, June 13 - Saturday, August 12

OVFTY Institute

A leadership institute for the members of the Ohio Valley Federation of Temple Youth.
Co-ed, Grades 10 - 12.

Institute: 1:00 P.M., Sunday, August 13 - Sunday, August 20

\$140

There is a \$25 reduction for the second child; a \$50 reduction for three or more children.

** There will be an additional fee of \$30 for the four week session and \$50 for the eight week session charged for campers whose families are not members of congregations affiliated with the Union of American Hebrew Congregations.

Space will be held for families of UAHC congregations until February 1, 1978. After that date, there will be open enrollment.

Visitor's day for parents will be on Saturday, July 15.

\$50 deposit is required with the application. This includes a non-refundable registration fee of \$20. **Fees must be paid in full by May 1, 1978. Deposits will not be refunded after this date.**

MACHON applications may be obtained by writing to the camp office. Decisions regarding acceptance into the program will be made starting February 1, 1978.

COUNSELORS, JUNIOR COUNSELORS (12th graders), and all other staff applications are also available from the camp office.

(1978 Application Form on reverse side)

1978 Application Form

Mail to: Rabbi Ronald Klotz, Director
Union Camp Institute
9349 Moore Road, Zionsville, IN 46077

(PLEASE PRINT ALL INFORMATION)

I hereby enroll my son _____ daughter _____

NAME _____
Last First Middle Nickname

For the session(s) checked below:

- ☐ Kallah Aleph — Sunday, June 18 - Saturday, July 15
☐ Kallah Bet — 1:00 P.M., Sunday, July 16 — Saturday, August 12
☐ MACHON (CIT) Program — Tuesday, June 13 - Saturday, August 12
(A supplemental application is required. Please request one from the camp office.)
☐ OVFTY Institute — 1:00 P.M., Sunday, August 13 - Sunday, August 20

Address _____ Phone _____

City, State, Zip _____

Child's Date of Birth _____ Grade Entering 1978 _____

Congregation _____ City _____

Has child attended UCI previously? _____ Year _____

Other camps attended _____

Physical restrictions _____

Father's name _____ Mother's name _____

Rabbi's signature _____

For OVFTY Institute enrollment, signature of TYG Advisor is required:

TYG ADVISOR

Parent's signature _____

\$50 deposit is required to reserve a place. Of this amount \$20 is a registration fee and will not be refunded.

No deposit will be refunded after May 1, 1978.

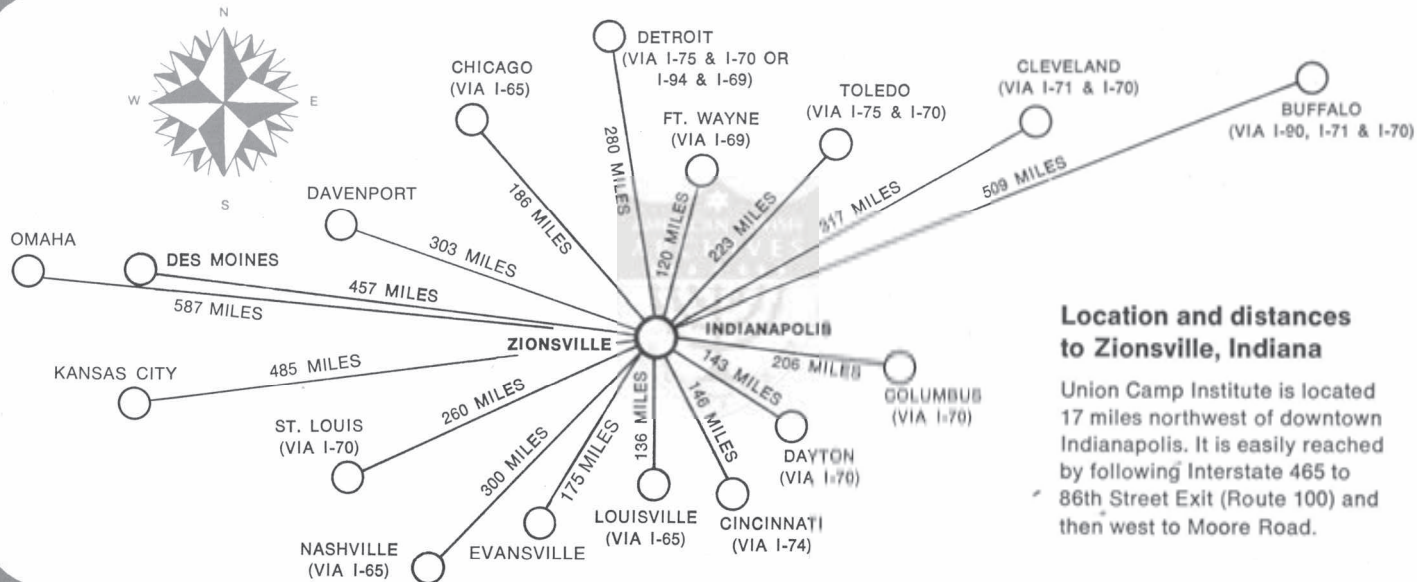
Union Camp Institute... for *more* than the usual camping experience!

UCI is, first and foremost, a first-rate summer camp. With outstanding recreational facilities, comfortable cabins under tall trees, a new dining hall and tennis courts, opportunities for creative expression, close attention to health care and the well being of each camper — it's everything you'd expect at a camp accredited by the American Camping Association.

But operated under the policies of the UAHC's Department of Youth Activities, UCI also offers the joy of discovering our Reform Jewish inheritance in a magnificent summer camp setting... in the company of rabbis, rabbinical students from Hebrew Union College, and talented young men and women committed to serving the needs of the Reform Jewish community.

Because of UCI's reputation as a camp with the unique ability to bring out the best in each child, each summer some children have to be turned away. To avoid disappointment, enroll your child in the session of your choice without delay.





Location and distances to Zionsville, Indiana

Union Camp Institute is located 17 miles northwest of downtown Indianapolis. It is easily reached by following Interstate 465 to 86th Street Exit (Route 100) and then west to Moore Road.



UAHC SWIG CAMP INSTITUTE

REPORT OF EXAMINATION

Year ended October 31, 1970

AMERICAN JEWISH
ARCHIVES



ALFRED A. FERGUSON

CERTIFIED PUBLIC ACCOUNTANT

703 MARKET STREET
SAN FRANCISCO 94103

GARFIELD 1-6540

November 25, 1970

Board of Directors
UAHC Swig Camp Institute
703 Market Street
San Francisco, California

Gentlemen:

We have examined the accounting records and other evidence of UAHC Swig Camp Institute for the year ended October 31, 1969 and have prepared therefrom the following exhibits and schedules:

EXHIBIT "A" - BALANCE SHEET - GENERAL FUND
as of October 31, 1970

EXHIBIT "B" - STATEMENT OF INCOME AND EXPENSE -
GENERAL FUND for the year ended
October 31, 1970

SCHEDULE 1 - DETAIL OF EXPENSES - GENERAL FUND
applicable to the year ended
October 31, 1970

EXHIBIT "C" - CAPITAL FUND - BALANCE SHEET as
of October 31, 1970

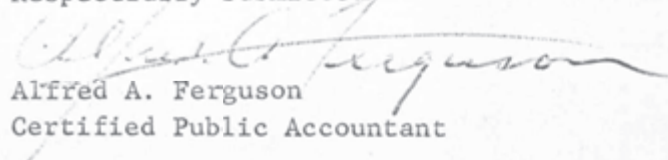
EXHIBIT "D" - CAPITAL FUND INCOME AND EXPENSE
for the year ended October 31, 1970

EXHIBIT "E" - STATEMENT OF FUND BALANCES for
the year ended October 31, 1970

Our examination was made in accordance with generally accepted auditing standards and accordingly included such tests of the accounting records and such other auditing procedures as we considered necessary in the circumstances.

In our opinion the accompanying Balance Sheets and related Statements of Income and Expense present fairly the financial position of UAHC Swig Camp Institute on October 31, 1970 and the results of its operations for the year then ended in conformity with generally accepted accounting principles applied on a basis consistent with that of the preceding year.

Respectfully submitted


Alfred A. Ferguson
Certified Public Accountant

UAHC SWIG CAMP INSTITUTEBALANCE SHEET - GENERAL FUNDOctober 31, 1970ASSETS

Cash	
Cash in bank	\$ 8,673.29
Accounts receivable	1,407.35
Inventories	6,099.74
Prepaid expenses	6,415.38
Advances to employees	75.00
Investment in Israel bonds	1,350.00

TOTAL ASSETS\$24,020.76LIABILITIES AND FUND BALANCELIABILITIES

Accounts payable	\$ 2,120.31
Accounts payable - taxes	185.05
Due to Union of American Hebrew Congregations	22,245.68
Due to capital fund	11,307.50

TOTAL LIABILITIES

\$35,858.54

DEFERRED INCOME

Tuitions	738.50
----------	--------

FUND BALANCE

Fund Balance - November 1, 1969	-\$ 2,915.11
Deficit year ended October 31, 1970	- 9,661.17

TOTAL FUND BALANCE- 12,576.28TOTAL LIABILITIES AND FUND BALANCE\$24,020.76

UAHC SWIG CAMP INSTITUTE

STATEMENT OF INCOME AND EXPENSE - GENERAL FUND

Year ended October 31, 1970

	Actual	Budget	Over (Under) Budget
<u>REVENUES</u>			
<u>Summer</u>			
Fees - campers	\$159,297.50	\$182,025.00	\$(22,727.50)
Canteen sales	601.27	2,000.00	(1,398.73)
Transportation	6,461.50	4,000.00	2,461.50
Milk subsidy	431.18	400.00	31.18
	<u>\$166,791.45</u>	<u>\$188,425.00</u>	<u>\$(21,633.55)</u>
<u>Fall - Winter - Spring</u>			
Fees - campers	\$ 20,884.75	\$ 27,000.00	\$(6,115.25)
Canteen sales	52.10		52.10
	<u>\$ 20,936.85</u>	<u>\$ 27,000.00</u>	<u>\$(6,063.15)</u>
<u>Contributions</u>	<u>\$ 16,441.75</u>	<u>\$ 13,500.00</u>	<u>\$ 2,941.75</u>
<u>Rental Income and Miscellaneous</u>	<u>\$ 1,203.38</u>	<u>\$ 1,500.00</u>	<u>\$(296.62)</u>
<u>Interest Income</u>	<u>\$ 159.50</u>		<u>\$ 159.50</u>
<u>TOTAL REVENUES</u>	<u>\$205,532.93</u>	<u>\$230,425.00</u>	<u>\$(24,892.07)</u>
<u>OPERATING EXPENSES</u>			
Administration	\$ 56,811.05	\$ 54,580.00	\$ 2,231.05
Commission	41,915.62	46,450.00	(4,534.38)
Education and recreation	33,712.33	34,450.00	(737.67)
Plant operation	39,921.47	46,500.00	(6,578.53)
Transportation	5,822.45	4,600.00	1,222.45
Housekeeping expense	3,001.60	4,725.00	(1,723.40)
Insurance	8,425.76	10,250.00	(1,824.24)
Canteen	3,700.97	4,650.00	(949.03)
Taxes	827.64	1,206.00	(378.36)
Interest	7,426.66	6,800.00	626.66
<u>TOTAL OPERATING EXPENSES</u>	<u>\$201,565.55</u>	<u>\$214,211.00</u>	<u>\$(12,645.45)</u>
<u>NET OPERATING PROFIT</u>	<u>\$ 3,967.38</u>	<u>\$ 16,214.00</u>	<u>\$(12,246.62)</u>
<u>OTHER EXPENSES</u>			
Provision for replacement	\$ 7,200.00	\$ 10,000.00	\$(2,800.00)
National Participation Fund	5,502.24	5,446.00	56.24
Uncollectable accounts	255.43		255.43
Previous years expenses	670.88		670.88
<u>TOTAL OTHER EXPENSES</u>	<u>\$ 13,628.55</u>	<u>\$ 15,446.00</u>	<u>\$(1,817.45)</u>
<u>NET DEFICIT FOR THE YEAR</u>	<u>-\$ 9,661.17</u>	<u>\$ 768.00</u>	<u>\$(10,429.17)</u>

UAHC SWIG CAMP INSTITUTE

DETAIL OF EXPENSES - GENERAL FUND

Year ended October 31, 1970

EXPENSES	Admin- istration	Commissary	Education & Recreation	Main- tenance	House- keeping
Salaries	\$33,828.23	\$ 9,720.14	\$25,568.55	\$13,612.63	\$ 450.00
Social security	1,439.75	464.65	1,130.30	615.73	21.60
Employee benefits	4,672.70				
Telephone & telegraph	3,080.42				
Postage & parcel post	1,469.72				
Travel expense - director	1,802.47				
Office supplies	3,320.56				
Advertising, promotion & publication	1,235.71				
Accounting and legal	736.80				
Rent - office	2,775.00				
Organization dues	319.50				
Medical supplies	296.29				
Equipment rentals	166.73			183.00	
Equipment purchases	329.69	154.41	27.28	582.71	555.74
Service contracts	365.80				
Equipment repairs	35.35		5.50		
Transportation - staff	387.10		576.29		
Express & freight	37.92	57.75	6.26	63.47	
Miscellaneous	511.31			55.13	100.00
Food - groceries		14,854.22			
Food - meat, fish, eggs		9,689.13			
Food - dairy products		3,026.07			
Paper goods		521.34			
Dishes, glassware & cutlery		554.59			
Sanitation & cleaning supplies		1,620.75		598.66	628.42
Linen rental		1,252.57			1,128.35
Honorariums			1,405.00		
Staff orientation			3.13		
Religious education			844.23		
Photography supplies			247.34		
Film expense			97.33		
Audio-visual expense			189.05		
Arts & crafts			1,765.05		
Recreation & athletics			96.12		
Music			443.14		
Nature and camp craft			15.61		
Dramatics			84.61		
Waterfront			11.43		
Library			310.94		
Camp pictures			885.17		
Swimming pool				658.06	
Light				5,117.95	
Fuel				6,274.11	

(continued)

SCHEDULE 1
(continued)

UAHC SWIG CAMP INSTITUTE

DETAIL OF EXPENSES - GENERAL FUND

Year ended October 31, 1970

	<u>Admin- istration</u>	<u>Commissary</u>	<u>Education & Recreation</u>	<u>Main- tenance</u>	<u>House- keeping</u>
<u>EXPENSES</u>					
Maintenance supplies				\$ 2,503.39	
Repairs and paint				1,938.11	16.00
Grounds and roads				1,831.00	
Cleaning				110.00	
Protection service				1,774.80	
Truck & auto expense				4,002.72	
Bedding & linen					84.30
Laundry					17.19
<u>TOTALS</u>	<u>\$56,811.05</u>	<u>\$41,915.62</u>	<u>\$33,712.33</u>	<u>\$39,921.47</u>	<u>\$3,001.60</u>



UAHC SWIG CAMP INSTITUTE
CAPITAL FUND - BALANCE SHEET

October 31, 1970

ASSETS

CASH

Cash in bank - checking	\$ 456.93	
Cash in bank - savings	<u>224.56</u>	\$ 681.49

<u>DUE FROM GENERAL FUND</u>		11,307.50
------------------------------	--	-----------

<u>INVESTMENTS - STATE OF ISRAEL BONDS</u>		7,000.00
--	--	----------

INVESTMENT IN FIXED ASSETS

Balance - November 1, 1969	\$691,342.24	
Additions this year	<u>14,557.13</u>	
	\$705,899.37	
Accumulated depreciation	<u>- 303,013.17</u>	<u>402,886.20</u>

<u>TOTAL ASSETS</u>		<u>\$421,875.19</u>
---------------------	--	---------------------

LIABILITIES AND FUND BALANCE

LIABILITIES

Note payable - Bank of America	\$ 54,103.62
Note payable - Roy E. & Reta L. Hope	<u>21,600.00</u>

<u>TOTAL LIABILITIES</u>	\$ 75,703.62
--------------------------	--------------

FUND BALANCE

Fund balance - November 1, 1969	\$328,499.00
Excess of income over expense year ended October 31, 1970	<u>17,672.57</u>

<u>FUND BALANCE</u>	<u>346,171.57</u>
---------------------	-------------------

<u>TOTAL LIABILITIES AND FUND BALANCE</u>	<u>\$421,875.19</u>
---	---------------------

UAHC SWIG CAMP INSTITUTE

CAPITAL FUND INCOME AND EXPENSE

Year ended October 31, 1970

INCOME

Pledges received	\$10,740.00
Contributions	40,600.50
Interest income	<u>324.23</u>
	<u>\$51,664.73</u>

EXPENSE

Depreciation allowance	<u>33,992.16</u>
------------------------	------------------

EXCESS OF INCOME OVER EXPENSE

\$17,672.57



UAHC SWIG CAMP INSTITUTESTATEMENT OF FUND BALANCESYear ended October 31, 1970

	<u>GENERAL FUND</u>	<u>CAPITAL FUND</u>
Balances at credit, November 1, 1969	-\$ 2,915.11	\$328,499.00
Addition:		
Net Capital Fund income, year ended October 31, 1970		<u>17,672.57</u>
	-\$ 2,915.11	\$346,171.57
Deduction:		
Net General Fund loss, year ended October 31, 1970	<u>- 9,661.17</u>	
Balances at credit, October 31, 1970	<u><u>-\$12,576.28</u></u>	<u><u>\$346,171.57</u></u>



AJ Congress Demonstration

(From left) Harvey Kroll, Abraham Nowick, Joel Brooks and Simon Blattner, representing the Northern California Region of the American Jewish Congress, demonstrate in front of the Soviet Consulate building on behalf of Soviet Jewry, part of the community-wide vigil program coordinated by the Bay Area Council on Soviet Jewry.

Camp Swig Plans Dedication

The Jo Naymark Holocaust Memorial Center will be dedicated at the Union of American Hebrew Congregations Camp Swig, 24500 Big Basin Way, Saratoga, during ceremonies on Saturday, Aug. 6 at 2 p.m.



Schindler

The building is a gift of the Sherman Naymark family of Los Altos Hills and San Jose in the name of the late Jo Naymark, dedicated to the families who have been affected by the Holocaust. The facility includes a synagogue-sanctuary, social hall and kitchen and an adjoining amphitheater. Unusual aspects of design, symbolism and

art work are incorporated into the new building.

Rabbi Alexander M. Schindler, president of the UHAC, will be the featured speaker. Campers and staff of the summer program will also participate in the ceremonies.

"We are indebted to the Naymark family for this significant contribution," said Leonard A. Cohn, president of the Board of UHAC Camp Swig. "It is an appropriate tribute to the victims of the Holocaust and to the memory of Jo Naymark. It will serve the needs of the Jewish community for many years to come."

For information about the ceremony and dedication, call the regional UHAC office at 392-7080 or UHAC Camp Swig at (408) 867-3469.

Camp Swig

Union of American Hebrew Congregations

cc: A. ABG
194

December 1, 1989

Congratulations Hevrah campers on leading the way to make people aware of the problems of substance abuse both in the Jewish community and the country as a whole.

As you might recall, at the end of the summer we came up with a list of resolutions on substance abuse that we thought the Union of American Hebrew Congregations should adopt. Our suggestions were submitted to the UAHC and incorporated into the final resolution which was passed at the 60th General Assembly of the UAHC in New Orleans, Louisiana on November 2-6, 1989. Over 4,000 people attended this assembly.

Enclosed is a copy of the final resolution on substance abuse. Take a look at parts 6-9; they come directly from our suggestions that the UAHC urge congregations to:


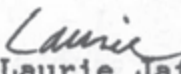

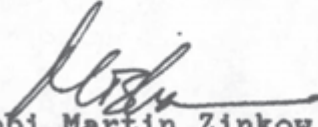
- start programs to assist substance abusers in overcoming their problems
- distribute educational materials in religious schools and youth groups
- support local drug and alcohol treatment agencies and, the issue which Hevrah was most outspoken on,
- call upon the President and Congress to provide adequate funding for the government's anti-drug program.

Also enclosed is the article published in the Northern California Jewish Bulletin covering our Hevrah Project.

You should be proud of the work we accomplished. We would love to hear about any of your continued involvement in the fight to stop substance abuse. You can write us at the Camp office (703 Market St., Ste. 1300, San Francisco, CA 94103).

Hope to see you at Camp next summer. Rishonim, Hagigah, High School Kibbutz and Avodah are filling quickly. Early bird brochures are enclosed.

B'shalom,

   
Judy Schindler, Laurie Jaffe, Steve Kahn, Rabbi Martin Zinkow



UAHC Swig Camp Institute for Living Judaism
Camp Director, Rabbi Martin Zinkow
Regional Director, Rabbi Morris M. Hershman
President, Board of Directors, Sheldon H. Wolfe
American Camping Association Accredited Camp

Summer Address • 4500 Big Basin Way, Saratoga, CA 95070 • 408-867-3469

Administrative Offices • 703 Market Street, Suite 1300, San Francisco, CA 94103 • 415-392-7080

U A H C

Camp Swig



*Celebrating 40 Exciting
Fun-Filled Summers*

1 9 9 3

UAHC Camp Swig Pulses with a Magical Spirit!

The Santa Cruz Mountains provide an exhilarating backdrop for UAHC Camp Swig, nestled among the magnificent California Redwoods, only four miles from Saratoga. Each summer, the camp comes to life as an enchanting Jewish community—filled with campers from throughout the West—in which young people are given the chance to explore, search, discover, create and grow.

Campers return home each summer filled with an excitement for Jewish learning, a deeper appreciation of the power of community, priceless memories and a lifetime of friendships, all of which keep them coming back year after year.

Camp Swig, recognized around the country for our spirited and original Jewish programming, has been a source of inspiration for thousands of young Reform Jews since it began in 1952.



UAHC Camp Swig

Rabbi Gregory Wolfe, M.A.J.E.

Director, UAHC Camp Swig

Rabbi Morris Hershman

Director, UAHC Northern California and
Pacific Northwest Councils

Raquel Newman

President



Winter Administrative Office:

UAHC Camp Swig
703 Market Street, Suite 1300
San Francisco, California 94103
415.392.7080

Summer Address:

UAHC Camp Swig
24500 Big Basin Way
Saratoga, California 95070
408.867.3469

What Distinguishes Camp Swig From All Other Camps?

Community building The moment campers step through our gates, they enter a wonderful world in which everyone feels a sense of belonging. Camp Swig creates a unique Jewish community that nourishes the individual and provides a safe environment in which campers learn and grow.

Creative learning The rich values and teachings of Judaism come to life through experiential programs that involve the mind and spirit of each participant. Our campers discover new ways Judaism can speak to them, as they step into the roles, settings, and situations of those whose lives shaped our Jewish destiny. Rather than learn what other Jews believe, Swig campers will develop their own beliefs about important Jewish concerns.

Jewish living An exciting opportunity to live, play and create in a totally Jewish environment awaits our campers. Each week at camp revolves around Shabbat. The arrival of Shabbat brings a peaceful *ruach* (spirit) into Camp Swig. Everyone dresses in white, participates in creative services and shares a traditional Shabbat dinner. Then the entire camp joins in singing and dancing together.



A Special Place For Campers

UAHC Camp Swig provides a wide range of sessions for campers in third through twelfth grades, each with a unique focus. Every session offers carefully planned programs around age-appropriate themes to ensure that campers are challenged and actively involved in creative Jewish experiences.

Operated by the Union of American Hebrew Congregations and actively supported by congregations from three UAHC regions, the camp hosts youth from all parts of California, Oregon, Washington, Arizona, Texas, Alaska, Hawaii, Nevada, Utah, Idaho, New Mexico and Montana.

Our experience shows that Camp Swig campers of all ages display a strong commitment and enthusiasm for their Judaism, which infuses new spirit into their synagogue and home life.

A Staff Who Really Cares

We know that every camper is unique. This is why we do all we can to create a nurturing, family environment in which campers experience the fun of living with children their own age. Counselors, many of whom were Camp Swig campers themselves, are carefully selected and are distinguished by their good judgment, their desire to work with children, and their Jewish commitment. A dedicated and talented senior staff oversees our dynamic programming. It includes rabbis and educators, rabbinic and Jewish education students, and accomplished Jewish artists and specialists, all of whom have years of camping experience at Swig and other camps.



Accommodations And Facilities

- ✓ Living accommodations in comfortable cabins or tents, modern kitchen and dining room.
- ✓ Indoor and outdoor program facilities, enhanced by the Jo Naymark Holocaust Memorial Center; spacious arts and crafts studios and darkroom.
- ✓ A fully-equipped infirmary with a medical staff in residence 24 hours a day.



Camp Swig Activities Include:

- ✓ **SPORTS:** tennis, swimming, basketball, softball, soccer, football, volleyball, frisbee, ga-ga, a challenging ropes course and biking.
- ✓ **NATURE AND CAMPCRAFT:** hiking, wilderness skills, overnight campouts and campfires.
- ✓ **ARTS:** drama, music, dance, photography, video, batik, ceramic, quilt-making, silkscreening, graphic arts, drawing, painting, weaving, puppet-, mask- and candle-making.
- ✓ **SPECIAL PROGRAMS:** performing arts festival, social action program, sports days and the annual Jeremy Friedman Concert.

KIBBUTZ... Now in Our 3rd Decade

Be a part of history this summer and catch the pioneering *ruach* of California's only kibbutz! Our Kibbutz sessions, celebrating 21 years at Camp Swig, offer campers of all ages an exciting opportunity to simulate Israeli Kibbutz living. Our Kibbutz is nestled away from main camp among the redwoods at the foot of the spectacular Jo Naymark Holocaust Memorial Center. Each of our four Kibbutz sessions (see schedule for the age-appropriate sessions) has a special group spirit. The thrill of experiencing nature in a small community is waiting for you! Modern dining facilities and "tent-style" cabins enhance the refreshing outdoor living experience. This unique program features shared responsibilities including tending the vegetable garden, caring for barnyard animals, preparing meals, helping with building projects, learning Hebrew and participating in nature activities.

**Make our history a part of your history—
spend a summer at Kibbutz!**

Rules for acceptance and participation in all UAHC Camp Swig programs, summer and winter, are the same for everyone without regard to race, color, national origin, age, sex, or handicap.

Schedule of Sessions 1993

All of our sessions provide daily opportunities for campers to participate in sports, the arts, recreation, nature, and Jewish educational programming. Each session has a special emphasis or focus that makes it unique. Session descriptions are listed below.

PLEASE REGISTER CAMPERS ACCORDING TO THEIR GRADE IN THE FALL OF 1993.

DATES: JUNE 29-JULY 4 FEES: \$495 \$570*

- A. BONIM (entering 3rd, 4th) Welcomes first-time campers
B. KIBBUTZ (entering 5th) • See special inset •

DATES: JUNE 29-JULY 18 FEES: \$1295 \$1475*

- C. KALLAH (entering 6th, 7th) Emphasizes social action
D. MACCABIAH (entering 8th, 9th) Features team sports

DATES: JULY 6-JULY 18 FEES: \$950 \$1085*

- E. GIBORIM (entering 4th, 5th) Celebrates all-around camping fun
F. KIBBUTZ (entering 6th) • See special inset •

DATES: JULY 20-AUGUST 1 FEES: \$950 \$1085*

- G. MECHINA (entering 5th, 6th) Brings modern Hebrew to life
H. SHOMRIM (entering 7th) Develops new sports skills
I. KIBBUTZ (entering 7th, 8th) • See special inset •
J. HAGIGAH (entering 9th-12th) Provides an intensive arts experience

DATES: AUGUST 3-AUGUST 22 FEES: \$1295 \$1475*

- K. TZOFIM (entering 7th, 8th) Highlights scouting and nature skills
L. HEVRAH (entering 9th) Focuses on a community social action project
M. KIBBUTZ (entering 9th, 10th) • See special inset •
N. RISHONIM (entering 10th, 11th) Explores current teen issues
O. MACHON (entering 11th, 12th) Builds leadership skills

ADDITIONAL PROGRAMS

DATES: JUNE 25-AUGUST 22 FEES: \$595 \$680*

- P. AVODAH (entering 11th) This unique program of work and study offers a select group of campers a challenging summer of community-building, innovative learning, and work in service areas of Camp. Includes special activities and trips. Campers are screened for their appropriateness for this program.

DATES: JUNE 25-AUGUST 2 FEES: \$975 \$1120*

- Q. COUNSELORS-IN-TRAINING (entering 12th) A limited number of applicants are accepted for this nationally recognized leadership and counseling training program, which includes an in-depth Judaica program, on-the-job experience, and a special field trip. Return the 1993 application on reverse side by December 3, 1992 to initiate the application process.

DATES: R. JULY 6-JULY 25 FEES: \$1295 \$1475*

S. AUGUST 3-AUGUST 22 FEES: \$1295 \$1475*

- R. & S. OLIM (entering 11th, 12th) A peak experience in adventure camping. This program is designed for the high school student seeking personal and physical challenges beyond the ordinary. The Olim program begins at Swig for an orientation and then campers travel through the breathtaking countryside of California under the guidance of our experienced outdoor education staff. Cycling and backpacking experience helpful. Campers are screened for their appropriateness for this program.

DATES: AUGUST 25-AUGUST 30

- T. FAMILY CAMP. Families join in joyous song and dance, enjoy games and sports, participate in creative arts, and learn in a warm, supportive community. Adult program features scholar-in-residence. Comprehensive children's programming and daycare. **FEES:** Vary for adults according to accommodations, \$260-\$400; for children, according to age, \$105-\$250.

- V. CAMP SWIG-NFTY ISRAEL SAFARI. What could be more exciting than a six-week summer adventure exploring the wonders of ancient and modern Israel with your friends from Camp Swig and CAFTY? Available for 15-18 year olds. Sign up now with the 1993 Camp Application, or call for more information.

ALL FEES INCLUDE CANTEN AND LOCAL BUS FEES.

* Non-UAHC Member Fee

UAHC Camp Swig 1993 Application

(Please complete a separate application for each camper.)

Date of Application: _____

Please enroll my ____ son ____ daughter

Name: _____
Last First Middle

in _____
(Letter and Name of Session)

Dates: _____ Fee: \$ _____

Address: _____

City: _____

State: _____ Zip: _____ Phone: () _____

Birthdate: _____ Grade-Fall 1993: _____

Attended Camp Swig before? Sessions? _____

Mother's Name: _____

Home Phone: () _____ Bus: () _____

Camp Swig (Saratoga) Alumna? _____

Father's Name: _____

Home Phone: () _____ Bus: () _____

Camp Swig (Saratoga) Alumnus? _____

With whom does camper reside? _____

In case of emergency please contact: (person and phone)

_____ () _____

Name of congregation: _____

City: _____

Rabbi's or Educator's signature: _____

(Signature of rabbi or educator must be obtained if applying as a member of a UAHC congregation)

Please complete both sides of application

Parent's Agreement and Medical Authorization

(Please read carefully and sign)

1. A deposit of \$100 is enclosed (\$200 after November 30). \$50 is a non-refundable registration fee. A second payment for half of the balance due, and for which I will be billed, is due by March 8, 1993. **BALANCE IS TO BE PAID IN FULL BY MAY 10, 1993.**
2. It is mutually understood that UAHC Camp Swig accepts no responsibility for loss of or damage to any camper's property incurred during the session or while in transit. I take full responsibility for my son's/daughter's property.
3. I agree that Camp Swig may use any photograph or likeness of my child for camp publicity.
4. If for reasons of discipline my child is sent home, the camp fee is forfeited.
5. I agree that my child will not receive final acceptance to his/her session until I have submitted a current completed medical form to the Camp.
6. I hereby give permission for my child to leave the camp grounds for supervised camp programs and/or for medical treatment by qualified medical personnel.
7. In case of surgical or medical emergency, I hereby give permission to the camp director or his representative to authorize the administration of health care services to my child by a physician or other professional health care provider (hospital, paramedic, nurse, etc.). I also give my permission to the physician selected by the camp director to hospitalize, secure proper treatment for, and to order injection, anesthesia, or surgery for my child. **Every effort will be made by the camp administration to immediately contact parents in the event of any emergency.**

I have read the above items 1 through 7, as well as the panel entitled "IMPORTANT INFORMATION," and I agree to the terms set forth therein.

Signature of parent or guardian

I agree to cooperate with the camp staff and with my fellow campers. I also agree to observe the camp rules and contribute to a good experience for myself and the entire camp community.

Signature of camper

Please detach the completed application and return it with your deposit check payable to UAHC Camp Swig to:

Rabbi Gregory Wolfe, Director
UAHC Camp Swig Application
703 Market Street, Suite 1300
San Francisco, CA 94103

Applications will not be processed unless signed by a parent or guardian and rabbi or educator of your congregation. Acceptance is not official until written confirmation is received from the camp office. All returned checks are subject to bank fees.

Please complete both sides of application

Important Information

Fees and Cancellation

A deposit by check of \$100 (before November 30, 1992) or \$200 (after November 30) must accompany this application in order to reserve a space. The deposit includes a non-refundable application fee of \$50. A second payment of one-half of the balance is due by March 8, 1993. All but \$50 of the deposit will be refunded for reservations cancelled by February 1, 1993. All but \$100 will be refunded for reservations cancelled by April 15, 1993. No refunds on deposits will be made after April 15, 1993. UAHC Camp Swig accepts Visa/Mastercard for all payments except deposits. **ALL FEES ARE PAYABLE BY MAY 10, 1993. No refund is made for early departure from camp.**

For campers whose families do not belong to member congregations in good standing of the Union of American Hebrew Congregations, there are additional fees, as follows: 1 week, \$75; 2 weeks, \$135; 3 weeks, \$180; 8 weeks, \$85; All other programs: 15% of tuition.

Camp fee includes room and board, all programs, equipment, supplies, canteen, and transportation to and from designated temple bus stops and airports.

PRIORITY ENROLLMENT

Camper applications from families of UAHC congregations will be accepted on a first-come, first-served basis. Camper applications from families not affiliated with UAHC congregations will be held until March 4, 1993, at which time these applications will be processed in the order in which they were received. **Non-UAHC member campers are not eligible for early-bird bonus offers.**

INSURANCE

For non-negligent accident occurrences, UAHC Camp Swig's insurance will cover all costs above and beyond those reimbursements made by the family's insurance plan, up to a maximum of \$2,500. All non-accident health care requirements which are not camp-related will be at the parent's or guardian's own expense. A copy of insurance settlement must be submitted with all claims for reimbursement.

VISITORS AND PHONE CALLS

Visitors and phone calls are not permitted during the camp sessions. Parents, family members and friends are welcome to visit the camp on the opening and closing days of camp sessions.

CARE PACKAGES

Please do not send packages containing food to camp. All care packages will be opened by addressee, and food will be returned at the sender's expense.

SCHOLARSHIP INFORMATION

Most UAHC congregations provide camperships to their congregants. Many Jewish Community Federations also provide camperships. Contact your rabbi or educator and/or your Federation or Bureau of Jewish Education for information.

TRANSPORTATION

Arrangements will be made for Camp Swig staff to accompany campers to and from airline gates, bus terminals and temple bus stops. Detailed information is sent in the spring. Temple bus stops will not be available for C.I.T., Avodah and Olim-R sessions.

U A H C

*Camp
Swig*



Union of American Hebrew Congregations
703 Market Street • Suite 1300
San Francisco • California 94103



PRESORTED
FIRST CLASS MAIL
U.S. POSTAGE
PAID
PERMIT NO. 301
SAN FRANCISCO, CA



November 7-11, 1975

DIGEST



November 6-11, 1975

Published by the Union of American Hebrew Congregations

Percentage Plan Upheld

In a spirited debate which was conducted on a high level of civility and mutual respect, the delegates attending the 53rd General Assembly approved the report of the Committee to Study the Proportional Dues Plan by a strong majority. Both supporters and opponents of the recommendations lauded the exceptionally fair manner, openness and give and take between the speakers and the presiding officer, Matthew H. Ross, Chairman of the UAHG Board of Trustees. Numerous delegates commented on the willingness of the Union and the College-Institute leaders to respond to questions and provide full disclosure to dissipate suspicion and confusion in the conduct of our dues program.

The three-hour long plenary session was preceded by two days of meetings with congregational presidents and leaders of both the UAHG and HUC-JIR led by Rabbi Schindler and Dr. Gottschalk. They painstakingly responded to all questions to the fullest possible extent and provided a forum for dialogue, under the helmsmanship of Gilbert Tilles, UAHG Vice Chairman. At all times these discussions were orderly and showed a level of concern for the national institutions of Reform Judaism. The congregational leaders, while seeking greater clarification of the UAHG and HUC-JIR fiscal policies, made it clear that the issue was not whether the College-Institute of the Union deserved continued financial support but rather which formulation should be used for the collection of these funds.

In the course of plenary debate, an amendment was proposed which called for a taxation of \$30. per membership unit rather than the present percentage formula. After lengthy review the proposal was defeated by a margin of three to one, 658 to 229.

Prior to the final vote on the Report, Rabbi Schindler voiced his deep appreciation for

the grace and dignity of the debate. He stated that the mood of the discussion reflected mutual concern for the priorities of the synagogue and the American Jewish community. Nevertheless, he emphasized that we are one in spirit and stand united in our common work as a family of congregations.

In response to a question regarding the future demeanor of the MUM Committee, Rabbi Schindler reminded the delegates of a recommendation from his presidential sermon, calling for:

* A re-evaluation of present guidelines for the operation of our dues program and the development of such new criteria as may be required to provide an equitable but nonetheless sympathetic basis for granting dues relief and understanding to our member-congregations, with special emphasis on the problem of congregational deficits, to the end that our goal as a movement should be not only to strengthen our national institutions but to strengthen our member-congregations as well.

* A mandate to the Board of Trustees of the UAHG and its MUM Committee to publish annually the dues paid to the Union by each of our member congregations to provide a sense of having received "full-disclosure" without violating confidential information supplied to the Union by member-congregations.

The delegates left the plenary with the hope that after a procedural review of collecting the fund necessary for the continuation of our national institutions and their programs which has taken place over these last six years, we can be confident that every effort has been expended to insure the validity of our decisions. We must now look to the future, to the strengthening of our program goals and to the upbuilding of American Reform Judaism.

TO OUR DEDICATED LEADERS A SALUTE OF THANKS

Union of American Hebrew Congregations Officers of the Board of Trustees



Judge Emil N. Baar
Honorary Chairman
New York, N.Y.



Irvin Fane
Honorary Chairman
Kansas City, Mo.



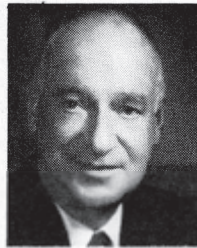
Dr. S.S. Hollender
Honorary Chairman
Chicago, Ill.



Earl Morse
Immediate Past Chairman
New York, N.Y.



Robert L. Adler
Vice Chairman
Chicago, Ill.



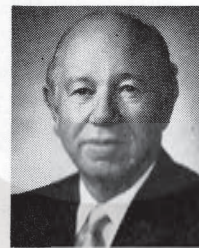
James M. Albert
Vice Chairman
Miami, Fla.



Alan J. Altheimer
Vice Chairman
Chicago, Ill.



Lazarus S. Bach
Vice Chairman
Albany, N.Y.



H.J. Bylan
Vice Chairman
Grand Rapids, Mich.



Herbert A. Ginsberg
Vice Chairman
So. San Francisco, Cal.



Rabbi Roland B. Gittelsohn
Vice Chairman
Boston, Mass.



Melvin T. Goldberger
Vice Chairman
Pompano Beach, Fla.



Nathaniel E. Hess
Vice Chairman
Sands Point, N.Y.



Alan V. Iselin
Vice Chairman
Albany, N.Y.



William G. Israel
Vice Chairman
Los Angeles, Cal.



Basil L. Kaufmann
Vice Chairman
Los Angeles, Cal.



Gus D. Kuhn, Jr.
Vice Chairman
Nashville, Tenn.



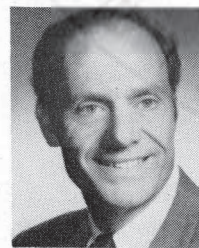
Norma U. Levitt
Vice Chairman
NFTS Immediate Past President
Great Neck, N.Y.



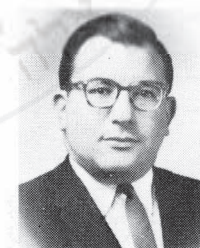
Alfred N. Miller
Vice Chairman
Montreal, Quebec, Canada



Jacob R. Rockower
Vice Chairman
Philadelphia, Pa.



Charles J. Rothschild, Jr.
Vice Chairman
Teaneck, N.J.



Rudi E. Scheidt
Vice Chairman
Memphis, Tenn.



Gilbert Tilles
Vice Chairman
Great Neck, N.Y.



Max L. Koeppl
Honorary Vice Chairman
Kings Point, N.Y.



Richard M. Stern
Honorary Vice Chairman
New York, N.Y.



Harold W. Dubinsky
Treasurer
St. Louis, Mo.



Albert Vorspan
Vice President
Hewlett, N.Y.



Theodore K. Broido
Administrative Secretary
New York, N.Y.

National Federation of Temple Sisterhoods



Mrs. Bee Hollobow
Chicago, Ill.
NFTS Past President



Mrs. Daisy Monsky
Los Angeles, Calif.
NFTS Past President



Mrs. Frieda Rosett
New Rochelle, N.Y.
NFTS Past President



Mrs. Gertrude Watters
New York, N.Y.
NFTS Past President



Mrs. Betty Benjamin
Cincinnati, Ohio
NFTS President



Mrs. Lillian Maltzer
Huntington Woods, Mich.
NFTS First Vice President



Mrs. Helene Spring
New York, N.Y.
NFTS Treasurer
Chairwoman, Biennial Program



Mrs. Connie Kreshtool
Wilmington, Del.
NFTS Vice President



Mrs. Eleanor Kretzer
North Hollywood, Calif.
NFTS Vice President



Mrs. Lorraine Stiffelman
Shawnee Mission, Kans.
NFTS Vice President



Mrs. Marilyn Adler
Alexandria, La.
NFTS Vice President



Mrs. Delores Wilkenfeld
Houston, Texas
NFTS Vice President



Mrs. Doris Chortek
Milwaukee, Wis.
NFTS Recording Secretary



Mrs. Martha Bearman
Coral Gables, Fla.
NFTS Board of Directors
Executive Committee



Mrs. Chickie Buckner
Seattle, Wash.
NFTS Board of Directors
Executive Committee



Mrs. Anne Goldberg
Washington, D.C.
NFTS Board of Directors
Executive Committee



Mrs. Judith Hertz
New York, N.Y.
NFTS Board of Directors
Executive Committee



Mrs. Lillian Winton
Toronto, Ont., Canada
NFTS Board of Directors
Executive Committee



Miss Jane Evans
NFTS Executive Director



Miss Eleanor R. Schwartz
New York, N.Y.
NFTS Associate Director

(Photo not available) Mrs. Helen Meyer, Meridian, Miss., NFTS Board of Directors, Executive Committee

Delegates Celebrate College-Institute

In gratitude and celebration, an evening of tribute to the Hebrew Union College-Jewish Institute of Religion on the occasion of its 100th Anniversary was a highlight of the UAHC-NFTS Biennials.

A special ABC-DIRECTIONS film, REFORM JUDAISM: AN AMERICAN STORY, which will be aired over network TV on November 30, 1975, was previewed for the delegates.

The Chairman of the Board of Governors, HUC-JIR, Judge Theodore Tannenwald, Jr. and the President of the College-Institute, Dr. Alfred Gottschalk, brought greetings to the assembly and spoke of the achievements of the past, the aims for the future, and the programs of our highest institution of learning for Reform Judaism.

The evening culminated in a lively musical performance of PSALMS, for chorus and ensemble, conducted by Bonia Shur, Director of Liturgical Arts, HUC-JIR, Cincinnati School. The evening was a splendid and moving tribute to our seminary.

Anniversaries

Certificates of tribute on the occasion of the 100th Anniversary of their founding were presented to six member congregations of the UAHC:

Temple Beth El, Jersey City, N.J.
Temple of Israel, Wilmington, N.C.
Congregation Sinai, Sumter, S.C.
The Temple-Congregation Shomer Emunim, Sylvania, Ohio
First Hebrew Congregation of Oakland-Temple Sinai, Oakland, Ca.
Congregation House of Israel, Hot Springs, Ark.

May they continue to grow from strength to greater strength.

This and That

- * Three distinguished graduates of the Class of '39, HUC-JIR, now find themselves reunited as members of the Board of Trustees of the UAHC -- Rabbi Arthur J. Lelyveld, Fairmount Temple, Cleveland; Rabbi Ely E. Pilchik, B'nai Jeshurun, Short Hills, N.J.; and Rabbi W. Gunther Plaut, Holy Blossom Temple, Toronto.
- * Rabbi Lelyveld, first advisor to NFTY, was also reunited, on the UAHC Board, with two of the founding sons of NFTY, Bernard Sang, Chicago, and Richard Bluestein, Denver.
- * Friends and supporters of the World Union for Progressive Judaism attended a special luncheon of the WUPJ on Saturday, November 8. Rabbi Richard G. Hirsch, Executive Director of the WUPJ, reported on world-wide activities of the organization, with a special emphasis on the Israel scene. A delegation of WUPJ leaders will tour Jewish communities of Latin America following the Biennial, visiting WUPJ congregations in Buenos Aires, Rio de Janeiro and Sao Paulo.

New UAHC Texas-Oklahoma Camp Institute To Be Established

With great and justified pride, Melvin T. Goldberger, chairman of the Union of American Hebrew Congregations Camp Commission, announced the approval and forthcoming establishment of the 9th UAHC Camp-Institute to serve youth and adults of Reform congregations in Texas and Oklahoma. The creation of the new Camp-Institute is a vital extension of the synagogues' program in transmitting Jewish education, values and customs.

The locale of the new camp will be a 100 acre wooded area near a lake in Bruceville, Texas (near Waco). It will accommodate 300 individuals. With a June, 1976 opening target date, construction of the 1.2 million dollar project will begin immediately. Thanks to the generosity of Reform congregations and leaders in the UAHC's Southwest Council, \$970,000 is already in hand.

Facilities will include eight cabins, a chapel, dining hall and recreation building, an auditorium with seating capacity for 500, a swimming pool, arts and crafts building, infirmary, library and tennis courts. All buildings will be air conditioned and winterized, permitting use of the facility all year round.



(L TO R) NEW UAHC CAMP PLANS BEING STUDIED BY BERNARD P. HARRIS, ARCHITECT; MELVIN GOLDBERGER, Camp Commission Head; Finance Chairpersons, all from Houston, MRS. DAVNA BROOK, LEONARD CERSONSKY, and MRS. DOLORES WILKENFELD.

Shalom Y'All

The Tarrant County Convention Center, Fort Worth, was the scene of a gala Texas-Style Barbecue, hosted by members of that community's Beth-El Congregation. The hospitality was warm and gracious and truly poured from the tips of their boots to the tops of their ten-gallon hats!

The evening culminated in a concert of Jewish American Music by the Fort Worth Symphony Orchestra conducted by John Giordano --- resplendant in a specially tailored suit of tails in blue denim which had been provided by Levi Strauss and Company. The program included selections from Aaron Copland's RODEO and Suite No.1 from THE DYBBUK by Leonard Bernstein. Usually performed as a ballet, this was the first public performance of the Bernstein selection in symphonic style. Cantor Harold Orbach, Temple Israel, Detroit and Cantor Richard Botton, Central Synagogue, New York City, were soloists.

The world premiere of SYMPHONY NO. 5, WE ARE THE ECHOES, by Samuel Adler, was conducted by the composer, Chairman of the Composition Department of the Eastman School of Music of the University of Rochester. SYMPHONY NO. 5 was commissioned by the UAHC in honor of the Bicentennial of the American Revolution. Jan Degaetani, professor of voice at the Eastman School of Music, noted mezzo-soprano, was the soloist. The lyrics included five poems by noted Jewish poets.

Sisterhood Awards

At a special Honors Luncheon, the National Federation of Temple Sisterhoods presented International Service Awards - Inscribed OR AMI -- LIGHT OF THE PEOPLE - to the following affiliated Sisterhoods:

Temple Isaiah, Lafayette, California for the preparation of a Lifecycle Booklet to assist Temple families plan special ceremonies and celebrations.

Temple Beth Israel, Pomona, California, sponsors of the "Shalom Sisterhood" of twenty-five residents of the correctional facility - The California Institute of Women, who arrange their own meetings, special affairs and food sales to raise funds for their release, and then advise the Beth Israel Sisterhood how they can be of assistance.

Congregation Emanu-El of San Francisco for creating a Biblical Walk and Garden in Golden Gate Park which was donated to the City of San Francisco in honor of the 125th Anniversary of Emanu-El.

Achduth Vesholom Congregation of Fort Wayne, Indiana for its presentation of an historical Bicentennial program for community educators and the Congregation as a reminder of the Jewish presence and participation throughout American history.

Temple Emanu-El of Willingboro, N.J. for its "Bikur Cholim" program of weekly visits to all Jewish patients in local hospitals and convalescent homes.

Temple Israel of New Rochelle, N.Y. for its creative efforts to involve the entire congregation and the community in contemporary approaches to worship in order to add artistic richness and make the Jewish heritage most meaningful.

Fairmount Temple, Cleveland for underwriting and creating Braille alphabet books with tactile illustrations as learning tools and objects to give pleasure to visually handicapped children.

Temple Emanu El of Houston for providing alternative programming opportunities under the Sisterhood structure to four special groups which come together on the basis of age, stage of life or common interest.

Temple Israel, Charleston, West Virginia for being the catalyst for a community recycling ecology project, which expanded to surrounding communities, gained the support of business, government and the media and resulted in employment and upward mobility for a number of families.

Petition Exceeds Three Hundred Feet

As of this writing, more than 2000 signatures have been affixed to a 300 ft. roll of butcher paper, serving as a STATEMENT OF AFFIRMATION of commitment to the survival and integrity of the State of Israel by the Reform Jewish community. This Statement spearheads the Reform Movement's participation in a nationwide SHABBAT OF AFFIRMATION, November 14-15, 1975, called by the Synagogue Council of America, the umbrella organization of the six congregational and rabbinic bodies of the Jewish community.

The Statement, to be shared with the government of the United States, reads:

"We commend the American Government for its courageous stand against the degradation of the United Nations. Zionism is the national liberation movement of the Jewish people. We are Zionists because we are Jews!"

Delegates to this Biennial Assembly are urged to participate with the congregations in special services and projects during the SHABBAT OF AFFIRMATION - November 14-15, 1975.

Goldman Union Camp Institute

UNION OF AMERICAN HEBREW CONGREGATIONS

... for the time of your life ...



... in Zionsville, Indiana

We're building Jewish minds and bodies.



It's what we're all about.

We work all year to plan an unforgettable summer for your child. Our program includes a creative curriculum of Jewish history and Hebrew in addition to sports, social events and special outings. Our camp offers your child spacious cabins nestled under tall trees, healthy, well-balanced meals, paths for hiking through the woods, a beautiful swimming pool, and large athletic fields. Make sure your child is included in one or both of our 1993 summer sessions!

Join in the fun at Goldman Union Camp.

Our program is like none other.

GUCI is a place where children experience what it's like to live, learn and grow with other Jewish children. Their self image and Jewish identity is enhanced by being a part of a community that includes rabbis, rabbinic students and young people who have chosen to spend their summers working at our camp.

Our camp is a family.

Singing songs around a campfire, spending time with cabin-mates and counselors, playing on the athletic field, swimming, and learning about our heritage are just a few of the activities that help our campers have an experience they'll never forget.



1993 is a special year for us.

We've been doing this for a long time.

The summer of 1993 marks our 35th season of Union Camping and our Director Rabbi Ron Klotz's 19th year. Our years of experience have made the program at Goldman Union Camp one of the most sophisticated and successful in camping today. As Director, Rabbi Klotz has ensured a consistent and unparalleled standard of excellence throughout the camp -- from the hiring of staff members, to the educational program and the athletic activities. You can find out more about the history of our camp and our outstanding program by contacting us at (317) 873-3361.



A look at our daily schedule . . .

- 7:15 Wake up
- 7:30 Infirmary call
- 8:00 Breakfast & singing
- 8:45 Clean up cabins
- 9:15 Hebrew-culture instruction
- 10:00 Instructional swim
- 11:15 Creative Judaic education
- 12:00 Free time
- 12:30 Lunch & singing
- 1:30 Rest hour
- 2:30 Sports
- 3:30 Free swim
- 4:30 Sports/games cabin activity
- 5:15 Art instruction
- 6:00 Free time
- 6:30 Dinner & singing
- 7:30 Creative worship service
- 8:00 Evening program & snack
- 9:45 Lights out

A message from our Director . . .

Dear Friends,

A great deal about our camp simply cannot be expressed within the confines of a brochure. The friendships that last a lifetime . . . the sense of Jewish belonging instilled in our young people . . . the role models and mentors that are recognized by campers . . . a "second home" where staff and campers alike are insulated from the pressures and stress of everyday life outside the gates of our camp.

Under my direction, our Program Director, Unit Heads, Counselors and Rabbinic Faculty create a warm, friendly environment that includes Jewish education, arts programs, and sports and swimming activities. One of my greatest rewards is planning and participating in the training of our staff, and then watching as they help our campers adjust, enjoy, learn and grow throughout the summer.

During my nineteen year association with Goldman Union Camp, I have watched children -- including my own -- mature into responsible, knowledgeable Jewish adults. What they take from camp never leaves them . . . the friends . . . the music . . . the campfires . . . the education . . . the memories that only Goldman Camp can provide.

I hope your child will join us for our 35th summer!

Rabbi Ron Klotz

We offer our campers . . .



- | | | |
|-----------------|---------------|--------------|
| Softball | Tennis | Soccer |
| Volleyball | Swimming | Machanaqim |
| Camp Olympics | Hickball | Basketball |
| Aerobics | Camping Out | Gymnastics |
| Drama | Arts & Crafts | Modern Dance |
| Israeli Dancing | Photography | Music |
| Singing | Radio | Canoeing |

Regular staff applications for Machon (Counselor-in-Training, entering 12th grade) and all other staff positions applications are available at the camp office.

There is an additional charge of \$100 for a four week session and \$200 for an eight week session charged for campers whose families are not members of congregations affiliated with the Union of American Hebrew Congregations.

The following camper applications will be accepted on a first come, first served basis: camper applications from families affiliated with UAHC congregations, applications from campers who have attended G.U.C.I. in the past but whose families are not affiliated with UAHC congregations, applications from any campers who were on our 1992 waiting list. Applications from campers who have not attended G.U.C.I. in the past and whose families are not affiliated with UAHC congregations will be kept in the order of their receipt in our office until February 1, 1993. At that time, they will be processed in that order and all subsequent camper applications will be accepted on a first come, first served basis. For scholarship information, contact the camp office. We are open to all, regardless of race or national origin.

NOTE: Canadian checks must be marked "U.S. Funds".



Goldman Union Camp Institute

9349 Moore Road

Zionsville, Indiana 46077

Telephone (317) 873-3361

FAX (317) 873-3742

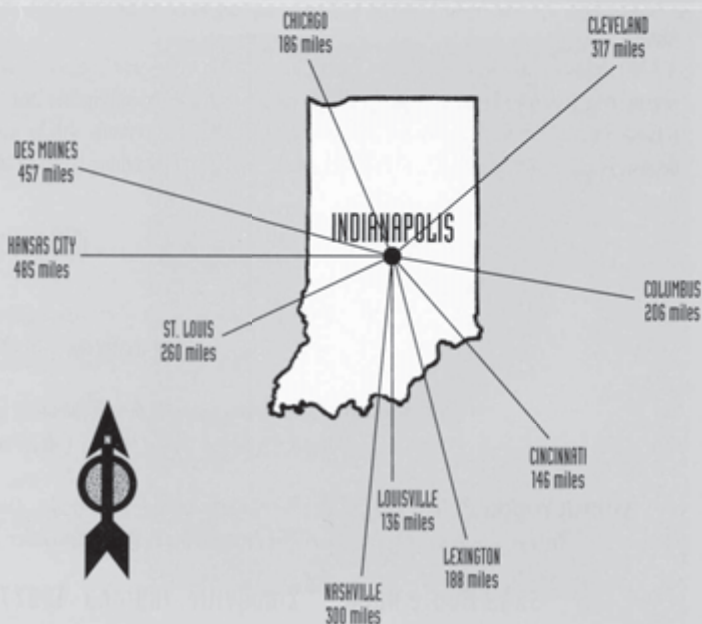
Join Us!

Goldman Union Camp Institute is located 17 miles northwest of downtown Indianapolis.
We are easily accessible to the Indianapolis Airport and I-65.

Register Early!

Each summer, some children are denied our camp experience due to space limitations.
It is important that you return the above Application Form without delay.

Goldman Union Camp Institute
... for the time of your life



Required Photograph
Attach Here

Goldman Union Camp Institute

1993 Application Form

Please Print All Information

Please enroll my: son ☐ daughter ☐ NEXT fall my child will enter grade ____ He/She is NOW in grade ____

Enroll my child in session(s) checked below:

- ☐ Hallah Aleph
☐ Hallah Bet
☐ OVFTY Institute

Tuesday, June 15 - Sunday, July 11
Tuesday, July 13 - Sunday, August 8
Monday, August 9 - Sunday, August 15

GARIN GOLDMAN

☐ Interested in going to Israel with friends from camp and OVFTY? Here is your chance. G.U.C.I. is putting together a special group for a six week N.F.T.Y. summer trip to Israel. Join us for the trip of a lifetime. Enjoy Israel with camp friends, a combination that can't be beat. Check this box to receive more information.

Name _____
last first middle nickname

Address _____
street city state zip code

Telephone Number (____) _____ Child's Date of Birth _____
month date year

Father's Name _____ Business Phone (____) _____

Mother's Name _____ Business Phone (____) _____

Child resides with Mother ☐ Father ☐ Both ☐

Physical Restrictions _____

Previous years at GUCI _____ Bunk requests: 1. _____ 2. _____
(We try to honor those bunk requests in which two campers request each other.)

Rabbi's Signature _____ Congregation _____

RELEASE FORM

In the event of an emergency, I hereby give permission to the physician selected by the Camp Director to secure proper treatment for, and if needed, hospitalize my child as named above. I also give permission for my child to participate in all camp activities both at the camp and supervised trips outside of camp. I also authorize any photos of my child to be used in the camp's promotional literature.

Signature _____ Date _____

Detach Here

Note:

A \$200 deposit must accompany this application in order to reserve a space. This includes a non-refundable registration fee of \$100. After the first child in a family is registered, there will be a \$50 sibling tuition reduction for each additional child. \$100 will be refunded for reservations cancelled before February 1, 1993. \$75 will be refunded for reservations cancelled before April 15, 1993. No refunds will be made after April 15, 1993. **ALL FEES MUST BE PAID IN FULL BY MAY 1, 1993.** A \$50 deposit is necessary to enroll in OVFTY Institute. OVFTY applications received after August 1st are subject to a \$25 late fee.

1993 Camp Program and Fees

KALLAH: Our program of activities and study for boys and girls entering grades 4 through 10
Four Weeks -- \$1400 Eight Weeks -- \$2800

OVFTY Institute: A leadership Institute for the members of the Ohio Valley Federation of Temple Youth. Co-ed for grades 9 - 12.
August 9 -- August 15 \$165 (Application and fees must be paid in full by August 1, 1993.)

AVODAH WORK/STUDY PROGRAM: For campers entering 11th grade. Contact the camp office for an Avodah application form. Acceptance is limited and selective. Avodah applications must be received at the camp office by December 1, 1992. Decisions regarding acceptance will be made beginning January 1, 1993.

9349 Moore Road Zionsville, Indiana 46077

Telephone (317) 873-3361

FAX (317) 873-3742

WHAT
WE'VE HEARD
FROM PARENTS:

“
My daughter returned from camp
feeling so good about herself.
”



“
Thank you for making Reform
Judaism beautiful for our children.
”



“
We can't get over how much our son
learned at camp.
”



“
You and your staff made my
daughter's summer such a positive
experience. Thank you.
”



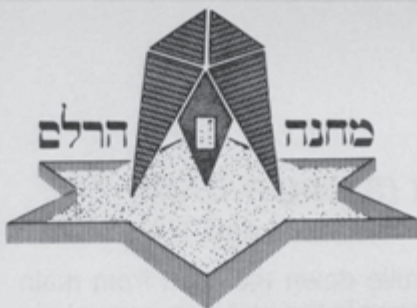
WHAT
WE'VE HEARD
FROM CAMPERS:

“
Shabbat at camp is so special.
We wait all week for it!
”

“
I didn't know one word of Hebrew
before camp. Now I know lots!
”

“
I want to come back as a counselor
as soon as I'm old enough.
”

“
I keep in touch with my camp
friends all winter. I can't wait to be
with them again next summer.
”



The Joseph & Betty Harlam U.A.H.C Camp Institute for Living Judaism

CAMPER APPLICATION



The Joseph and Betty Harlam Camp, located in the foothills of the Pocono Mountains in Pennsylvania, is a facility which provides the finest in both educational and recreational activities for Reform Jewish Youth. Camp Harlam strives to achieve these goals with a highly skilled and dedicated staff who are devoted to the well-being of the individual child.

Camp Harlam offers the following options for the 1993 Summer Season.

JUNIOR CAMP

Completed grade 2 (or 8 years old) — Completed Grade 8.

Campers are divided by ages in five co-ed units — Carmel, Sharon, Arava, Galil and Golan. The educational program challenges each unit to explore and discover various Jewish themes. The Creative Arts program includes arts and crafts, drama, photography, music, dance, video, radio and scouting. The Athletic program is divided into instructional and recreational sports. Our outstanding sports facilities include the Sports Palace (an indoor field house), 8 tennis courts, indoor soccer, basketball and beach volleyball courts, softball and soccer fields. The Aquatic program operates among 3 pools and a lake and includes red cross instruction, canoeing and recreational swimming. Each session, campers in Carmel through Galil, take a one day trip out of camp. Golan takes a two day trip out of camp. All in all, the Junior Camp program offers a complete camping experience in a Reform Jewish setting.

FEES AND DATES FOR 1993

First Session	June 29 - July 25
Second Session	July 27 - August 22

FEES

Junior Camp	\$1690.00 Per Session	\$3380.00 Full Summer
Chavurah	\$1795.00 Per Session	\$3590.00 Full Summer
CIT		\$1565.00 Full Summer

CHILDREN WHO ARE NOT AFFILIATED WITH A UAHG CONGREGATION WILL PAY AN ADDITIONAL \$175.00 SURCHARGE PER SESSION TO ATTEND CAMP HARLAM.





CHAVURAH (SENIOR CAMP)

(Completed Grades 9 and 10)

Chavurah is located 1/4 mile down the road from main camp. The Chavurah program is the first step in teaching campers the basics of leadership and programming. Counselors act as advisors coordinating and planning activities with campers. Chavurah is a self-sufficient village which includes a kitchen, a rec hall, softball and soccer fields, a beach volleyball court, tennis courts and its own swimming pool. Each session, Chavurah takes a 3 day trip out of camp. Past destinations have included Boston, Niagara Falls and Washington D.C. The campers are hosted by our congregations and sleep at the temple. During these trips the campers will have to purchase their own meals. The Chavurah program is a unique opportunity for teenagers to experience supervised independence.



CAMP HARLAM IN ISRAEL

Entering 11th Grade

Camp Harlam has an outstanding tradition of sending a group of campers to Israel on a NFTY trip. This six week Israel experience combines an opportunity to tour Israel while spending time with camp friends. The group leaders are selected by Camp Harlam and NFTY. This is a once in a lifetime opportunity that should not be missed. The departure is late June or early July. The price will be determined in late December. For an application, contact the Camp Harlam office.



MACHONE — COUNSELOR IN TRAINING

Completed Grade 11

The CIT program includes on the job training which provides the experience and confidence necessary to become successful and innovative staff members in our camps and leaders in our communities. The CIT program enables the participants to enjoy both being a camper and assuming responsibilities of a counselor. Living in their own facility, the CITs are involved in and exposed to all of the programmatic areas of camp. A selected number of young men and women are accepted to the CIT program based on an interview and recommendations. For this program you must write in for a special application.

Starting date for this program is June 27, 1993.





The Joseph & Betty Harlam U.A.H.C Camp Institute for Living Judaism

APPLICATION FOR THE JUNIOR CAMP AND CHAVURAH PROGRAMS

SUMMER OF 1993

APPLICATION FORM TO BE
COMPLETED ONLY BY A
PARENT/GUARDIAN. PLEASE
TYPE OR PRINT CLEARLY.
ONLY ONE CHILD PER APPLICATION.

SEND COMPLETED APPLICATION WITH DEPOSIT TO:
U.A.H.C. CAMP HARLAM
2111 Architects Bldg.
117 S. 17th Street
Philadelphia, PA 19103

Please enroll _____ last name _____ first _____ middle _____ Boy _____ Girl _____

for JUNIOR CAMP: _____ First Session
entering 3rd _____ Second Session
through 9th grades _____ Full Summer

CHAVURAH: _____ First Session
entering 10th _____ Second Session
& 11th grades _____ Full Summer

First Session: June 29
to July 25
Second Session: July 27
to August 22

Date of Birth _____ month _____ day _____ year _____ Grade in School (as of next September) _____

Age (as of next June) _____ years _____ months Camper was last at Camp Harlam in 19 _____ in Bunk _____

Placement of campers in bunks is done by chronological age at the final discretion of the Camp Director. Requests will be honored only when possible and when within Camp guidelines and placement rules. REQUESTS ARE NOT GUARANTEED. Camper requests to be placed in the same bunks as:

1. _____ 2. _____

PARENTAL INFORMATION

Father's Name _____ Occupation _____ Home Phone () _____

Home Address _____ Street _____ City _____ State _____ Zip _____

Business Address _____ Street _____ City _____ State _____ Zip _____ Business Phone () _____

Mother's Name _____ Occupation _____ Home Phone () _____

Home Address _____ Street _____ City _____ State _____ Zip _____

Business Address _____ Street _____ City _____ State _____ Zip _____ Business Phone () _____

With Whom Does the Camper Reside? _____

Siblings In Camp _____

In Case of Emergency Notify: _____ Name _____ Relationship _____ () _____ Phone Number _____
(Other Than Parent)

TEMPLE AFFILIATION

Name of Temple _____

Temple Address _____ Street _____ City _____ State _____ Zip _____

Temple Rabbi's Signature _____

CHILDREN WHO ARE NOT AFFILIATED WITH UAHC CONGREGATIONS WILL PAY AN ADDITIONAL \$175.00 SURCHARGE PER SESSION TO ATTEND CAMP HARLAM.

PLEASE READ REVERSE SIDE AND SIGN WHERE INDICATED

DETACH ON PERFORATION AND MAIL BACK

1993 FEE SCHEDULE

Junior Camp

(entering 3rd through 9th grades)

First or Second Session\$1690.00

Full Summer\$3380.00

Chavurah

(entering 10th & 11th grades)

First or Second Session\$1795.00

Full Summer\$3590.00

Machone (C.I.T.)

(entering 12th grade)

Full Summer\$1565.00

Scholarships, in certain circumstances, are available through your congregation, in cooperation with Camp Harlam. For more information, contact your congregation.

Acceptance and participation in the program are the same for everyone without regard to race, color, national origin, age, sex or handicap.

TERMS OF ENROLLMENT (PLEASE READ CAREFULLY AND SIGN)

1. A DEPOSIT OF \$250.00 FOR A SESSION MUST ACCOMPANY THIS APPLICATION. If the child is enrolling for 8 weeks, the deposit is \$350.00. From each session's deposit, \$150.00 is for registration and is not refundable. The balance will be paid in two installments. The first payment of \$350.00 per session will be due by February 28, 1993. The remaining balance is due by May 1, 1993. After June 1, 1993, no refunds will be made unless a replacement is found. Checks should be made payable to UAHC J & B Harlam Institute. PARENTS ARE RESPONSIBLE FOR ALL TRANSPORTATION TO AND FROM CAMP.
2. Should a child be withdrawn from camp for treatment for an illness contracted at Camp or for any accident while he/she is living at Camp, a full refund on a pro-rated basis will be made for the period of the child's absence from Camp.
3. The Camp Director reserves the right to dismiss any camper WITHOUT REFUND who willfully disregards Camp rules, or who endangers the camper's or others' safety, or who otherwise fails to meet the character and integrity requirements of Camp.
4. IT IS MUTUALLY UNDERSTOOD THAT THE CAMP ACCEPTS NO RESPONSIBILITY FOR LOSS OR DAMAGE TO ANY CAMPER'S PROPERTY.
5. It is distinctly understood that parent or guardian in signing this application certifies that the child is normal and healthy, and agrees that after a place in Camp has been reserved, the child shall remain until the end of the period reserved. Campers may not come late or leave early from a camp session. Conflicts and alternatives must be worked out by parents PRIOR TO CAMP. This application is accepted subject to a physical examination of the child by a physician.
6. Placement of campers in bunks is done by chronological age at the final discretion of the Camp Director. Requests will be honored only when possible and when within Camp guidelines and placement rules. Once bunk assignments have been made and distributed to parents they are final.
7. Camp Harlam has my permission to use any photos of Camp activities in which my child may appear in the interpretation of its camping program to the community.
8. In the mutual interests of the Camp and campers, the parents of the camper herewith enrolled will respect and observe the rules and regulations of the Camp, which have been developed for the benefit of the children.
9. The parent agrees to visit camp ONLY on such visiting days as may be designated by the Camp and will follow Camp regulations on visiting.
10. I hereby give permission for my child to leave the Camp ground for Camp programs.
11. Our insurance will, for non-negligent accident occurrences, cover all the costs above and beyond those reimbursements made by the family's insurance plan up to a maximum of \$2,500.00. All non-accident health care requirements which are not camp-related will be at the parent's or guardian's own expense. A copy of insurance settlement must be submitted with all claims for reimbursement. I hereby waive any and all claims for medical expense for a non-negligent accident over and above that set forth in this paragraph.
12. IN CASE OF SURGICAL OR MEDICAL EMERGENCY, the parent hereby gives permission to the physician selected by the Camp Director to hospitalize, secure proper treatment for, and to order injection, anesthesia or surgery for the child, as named above. Every effort will be made by the Camp Administration to immediately contact parents in the event of any emergency.

I HAVE READ THE ABOVE TERMS. ALL THE INFORMATION CONCERNING THE CAMPER IS TRUE, AND I AGREE TO THE TERMS.

SIGNATURE OF PARENT _____

DATE _____

**UAHC Kutz
Camp Institute
Warwick, New York
presents**

The NFTY National Academy

Kallah-Torah Corps

NYFRS Mitzvah Corps

**"Outstanding summer
programs for high school
age youth!"**



Contents

The Program
The Camp
The Staff
The Camp Units
 NFTY National Academy
 NFTY Kallah—Torah Corps
 Work/Scholarship
 NYFRS Mitzvah Corps
The Weekly schedule
 Daytime blocks
 Shabbat
 Visiting Day

Separate enclosures

The Fees
The Application
Financial payment options
Kutz Camp fact sheet

The Program

How do you feel about interdating? What about your future, college, a career? What are your responsibilities to your parents, your siblings, your heritage, your community? What does Judaism mean to you? Where are you now and where are you going?



"Did you know that in my area of camp, there are kids from twenty-five states and six different countries? I have free time at 12:00 today. Do you want to meet for lunch? A group of us are meeting with the theatre director and the new modern dance person to prepare a program for next Shabbat. By the way did you know that she has her own dance studio in New York and choreographs a professional company?

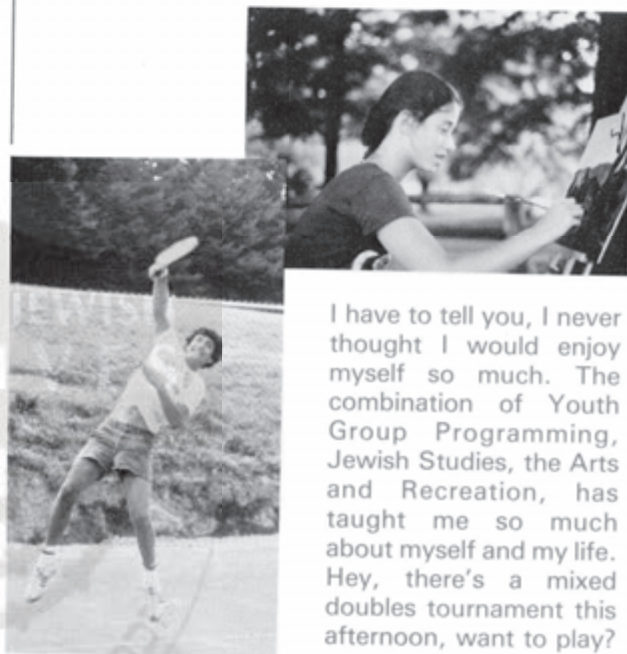


Her husband, who is the camp photographer, is one of seven specialists in dance photography in the world.



The rabbi from New Jersey is going to take forty kids from the Social Action class to Washington next week for a special seminar. I went last year, it was terrific! This year I am going to go with the rest of the camp to New York.

Most are going on the Museum tours. I am going to go on the Jewish-New York tour. We are all going to get together for Broadway theatre later on in the evening.



I have to tell you, I never thought I would enjoy myself so much. The combination of Youth Group Programming, Jewish Studies, the Arts and Recreation, has taught me so much about myself and my life. Hey, there's a mixed doubles tournament this afternoon, want to play?



I know you like to be at the pool every afternoon, but this is really going to be super. This whole place is incredible!"

The Camp

Kutz Camp is a very special summer experience for high school youth. The program is designed to meet the desires, general needs and Jewish needs of high school students. The environment, the structure of what happens at camp, responds to the maturity level of this age group. The individuals' right to choose and their responsibility to make choices based on careful consideration are the keystones of the experience. During the daytime hours, the individuals structure their own program of activities choosing from over 100 different experiences in the arts, recreation, leadership techniques and dynamics and Jewish Studies.



Everyone must choose from each area with a concentration in one of them. The meal service during this period of the day is cafeteria style to allow the individuals to choose not only what they eat but at what time. In the late afternoon and evening the activities center around the camp community. We eat dinner as one family, faculty, staff and campers. We conclude our day sharing a major evening program, presented by different groups, to the entire camp community.

Kutz Camp is unique in the Jewish world. It provides a congregation with a youth group member who has learned how to program and how to lead. It gives the individual an opportunity to explore the entire spectrum of Jewish life for today and tomorrow.



The UAHC Kutz Camp is located some 50 miles northwest of New York City. The ninety acres of wooded property on which the Camp Institute is located was purchased in 1964 as a gift from the Milton and Hattie Kutz Foundation, to be used for UAHC youth programming. There exist four living areas with a total capacity of 270 program participants and 150 faculty and staff members. There are three dining rooms (and a chef known for his delicacies and commitment to serving high school students), a Learning Center, three major program halls and lounges for informal get-togethers. The camp has a fully equipped theatre complex and a complete arts center for dance, music, crafts, the visual arts and photography. Our lake (for boating), pool, tennis and volleyball courts, athletic fields and hiking trails compliment the recreational facilities.



There is a fully trained medical staff on the camp grounds with a well equipped infirmary. The town of Warwick is a five minute drive and has a quality hospital facility and staff with which the camp has had a relationship since its beginning. The local Jewish community, with a UAHC Congregation in Florida, New York, and the general community, is most supportive of the camp's activities. Because of the proximity to New York City (one hour and fifteen minutes by car), the camp has an extensive field trip program of very high quality.

The Staff



Because of the uniqueness of its program, the Kutz Camp has one of the largest camp staffs of any facility in the United States. The staff is broken down into four components: Administration, Faculty, Resident Advisors, Program support staff.

ADMINISTRATION: The administration of the camp consists of the Camp Director, and Co-Director, comptroller, UAHC Youth Division Program Directors, Central Shaliach, Medical Personnel, Camp Secretary and Program Coordinators.

FACULTY: There are over 30 individuals on the teaching faculty. All are graduate professionals within their particular specialty areas. There are three Scholars-in-Residence from the Hebrew Union College-Jewish Institute of Religion, eight rabbis and four rabbinic students, two Ulpan specialists with advanced degrees in Theatre, Art, Education, Music, Modern & Jazz Dance, Folk Dance, Photography and teaching assistants in Song Leading, General Crafts and Youth Group Dynamics.

RESIDENT ADVISORS: At the Kutz Camp a unique program of advisors has been created to help guide and supervise the general activities of the high school community. Allowing the most freedom possible and at the same time insuring the health, safety and general welfare of the individual, the community and the program, is the responsibility of the Resident Advisors. They are carefully supervised in their activities by a head Resident Advisor, the Camp Co-Director and the Camp Nurse.

PROGRAM SUPPORT

STAFF: One of the most important staff components at Kutz is a group of over 20 college students who work in areas of program support. They staff the office in order to prepare study materials, services and programs as they are created by the camp community. In the dining room they supervise the cafeteria style meal service which allows great flexibility in times and quality of food service. As a maintenance crew, drivers and theatre crew, they provide the ability to create program designs in all areas of camp, have field trip programs as required and provide for the movement of program participants and faculty on an individual basis.



Finally there is a fully supplied camp store able to provide safekeeping for the valuables of program participants and at the same time offer up pizza, milk shakes, other snack items, health supplies, various sundries and, of course, Kutz camp novelty items. All in all, the Kutz Camp has a family of staff members in excess of 100 individuals.

The Camp Units

Although everyone in camp has approximately the same daily schedule and has the same opportunity to participate in all community activities, the camp divides itself into four program designations: The NFTY National Academy, the NFTY Kallah-Torah Corps, Work/Scholarship and NYFRS Mitzvah Corps.

The NFTY National Academy

*Choose Semester I or II
(3½ weeks each)
or attend both.*



The Academy can best be described as an experiential university in which participants choose to concentrate their attention in one of three major areas: Youth Group Leadership and Programming, the Performing and Visual Arts and Jewish Studies.

Within each area there are specific field concentrations, so that an individual may elect to major in Song Leading, Theatre, Folk Dance Leading, Modern Dance, Photography, Painting, Sculpture, Pottery, Crafts, Youth Group Programming, Music, Social Action Studies, Hebrew, General Jewish Studies and Leadership Dynamics. Each individual will spend five or six hours per day in various experiences. Two or three hours are spent in their area of concentration, one hour must be chosen from a list of over 20 general Jewish Studies subjects ranging from contemporary Jewish problems to an introduction to rabbinic studies. A fifth or sixth hour is spent in any one of over sixty electives. Each experience has three goals: 1. to impart a particular skill; 2. to provide an opportunity for exploration and experimentation; 3. to motivate the participant to use the knowledge gained in the local TYG, congregation, home life and community.

This summer the Academy will offer a range of experiences in various areas of the behavioral sciences ranging from family relations to teenage sexuality, from basic psychology to communal service, social work concepts and group process dynamics.

During each hour of the Academy day—9:00 A.M.-4:00 P.M., there will be a range of recreational clinics and team activities to complement the cultural program. Of course, the lake and pool are open and a certified Red Cross course in Life Saving is offered.

Field trips are offered in those courses where they are relevant. Each semester the full Academy has a trip to New York during which each individual can choose from a wide variety of tours, sites and Broadway theatre.



During the afternoon hours all participants have the opportunity to enhance their camp experience through a wide range of recreational and cultural workshops. If you were unable to schedule a particular experience during the regular course hours, usually there is a workshop that will partially take its place. In addition, everyone joins a model TYG to help plan the evening programs and services at camp. This is an important social skill which is invaluable to all participants in their home congregations.

NFTY Kallah-Torah Corps

(7 weeks)

In the summer of 1982, the Kutz Camp together with the Hebrew Union College-Jewish Institute of Religion began a very special experiential academic program called the Kallah-Torah Corps. The Kallah-Torah Corps is a continuation of the NFTY National Torah Corps in a new exciting form which its Director, Professor Lawrence Hoffman, Professor of Liturgy of HUC-JIR, together with its first year participants and faculty has termed "The Jewish Experience." The Kallah-Torah Corps accepts twenty-five highly motivated students from North America. Many of these individuals are seriously considering careers as Jewish professionals. As participants in the Kallah-Torah Corps they will be taught by faculty members from the various campuses of HUC-JIR and from each of its schools. The daily schedule of the Kallah-Torah Corps is carefully coordinated with that of the Academy to allow Kallah-Torah Corps members to participate with the whole camp or program separately. The Kallah-Torah Corps program of field trips is integrated in a creative manner with the academic program. Kallah members have a daily schedule of three time blocks. The morning is divided into two sections, with the duration of each section varying from day to day depending on the specific content of that day. During these sections, students will be introduced in an intensive manner to the Jewish Historical Experience through the ages and the rabbinic and

theological experience. In each section there will be a survey of the literature, sociology, economics and culture of the various periods. In addition, each Kallah member is given an opportunity to register for an elective of his or her choice from the general catalog of courses.

A special second year section of the Kallah focusing on Hebrew and being held in Israel will be offered at very special rates to all Kallah-Torah Corps participants. Details of this program will be distributed to participants during the program.

Work/Scholarship (7 weeks)

As an incentive to entering high school seniors, a Work/Scholarship program is available for all Kutz Camp programs. All participants must register for the full summer. The 30 entering seniors who may register for the program will be accepted on a financial-need-recommendation basis. The participants will be expected to work one or two hours per day in the various program support areas.

NYFRS Mitzvah Corps

3½ weeks, concurrent with Semester I of the NFTY Academy

In 1982, the Kutz Camp was privileged to host a special Mitzvah Corps program of the New York Federation of Reform Synagogues. This program is designed as a Jewish experience in community living for the hearing and non-hearing high school student. Hearing students are taught to communicate through sign language with the non-hearing. Non-hearing students participate fully in the Kutz Academy experience with the assistance of their hearing Mitzvah Corps participants and the faculty specially employed for this group. As with all programs within the Kutz community, the daily schedule of the NYFRS Mitzvah Corps allows for both individual and fully integrated programming.

All Kutz programs, including song sessions, are structured with the help of the Mitzvah Corps faculty and participants, to allow for the full participation of the non-hearing high school students. *Hearing* participants only will be selected from the New York region. *Non-hearing* participants from any community are invited to apply.



The Weekly & Daily Schedule

The Kutz Camp generally operates on three schedules:

- Schedule A. Sunday through Thursday
- B. Friday
- C. Saturday

From time to time the schedule is adjusted up or down by an hour to allow for later programming, mealtimes and wake-up.

In general mealtimes during the week are:

Breakfast	8:00-8:45	cafeteria style
Lunch	11:30-1:30	cafeteria style
Dinner	6:30	family style

Friday		
Breakfast	8:00-8:45	cafeteria style
Lunch	12:00-1:00	cafeteria style
Dinner	7:00	family style

Saturday		
Breakfast	9:00-9:45	cafeteria style
Lunch	1:00	family style
Dinner	6:30-7:15	cook out

Daily Schedule

7:15
8:00-8:45
9:05-1:00

1:00-2:00
2:00-4:00
4:00-6:00

6:30
8:00
11:30

Wake-up — clean up
Breakfast
BLOCK I—Major subjects
(4 fifty minute course hours)
Model TYG
Elective Block
(2 fifty minute course hours)
Free recreation and program
planning time
Dinner, Song session
Evening program
Lights out

Friday 7:15
8:00- 8:45
9:05- 1:00
1:00
2:00
5:00
6:00
7:00
9:15
11:45

Wake-up
Breakfast
Major Block courses
Lunch
Free time
Shabbat preparation
Kaballat Shabbat
Dinner
Services—Program
Lights out

Saturday 8:30
9:15
10:00
11:30
1:00
2:30
6:15
9:00
11:30

Wake-up
Breakfast
Shabbat Service
Faculty Scholar Lecture
Lunch
Free time
Dinner
Havdalah—Program
Lights out

Shabbat



The Shabbat at Kutz is a wonderful time when a sense of community pervades in a very intense and beautiful way. Shabbat begins on Friday afternoon with the individuals preparing themselves and their areas for the coming day.

At about 6:00 the community gathers together to welcome the Shabbat with special ceremonies, performances and exhibits. At about 7:00 we gather in the dining room for kiddush and a festive Shabbat meal. Following dinner there is a song session which reaches an emotional intensity understood only by those who have had the experience. A creative Shabbat service follows. The evening culminates with folk dancing and snacks. Saturday is a relaxed day, beginning with a late wake-up and breakfast. At 10:00 a service is conducted by one of the camp rabbis and is followed by a faculty lecture. At 1:00 we gather for lunch and a festive up-beat song session. The afternoon is free time spent in various recreational activities, hikes and swimming. In the evening we have a barbecue dinner and conclude the Shabbat with a havdalah service created by the program participants.

Visitors' Day & Shabbat

Kutz has no single visitors' day. Instead, each Shabbat many of the parents, relatives, past staff members and *adult* guests join us for the day's activities (except meals, that is; unfortunately, our dining room just isn't big enough to accommodate campers' guests). Immediate relatives sometimes will take program participants for a trip in the general camp area. Remember, Kutz is a camp for high school students and so the program and camp remains as open and flexible as can be without ever sacrificing the health, safety or security of any of its community members.

Special Needs, Questions and Problems

The Kutz Camp will do its best to accommodate individuals with special needs, financial and otherwise. Please feel free to contact the camp director or co-director (Rabbi Allan L. Smith, Paul J. Reichenbach) concerning any issue or problem.

Additional Information Booklets and Applications

We will be happy to provide you with as many booklets and applications as you desire. Please direct all requests to:

UAHC Kutz Camp
838 Fifth Avenue
New York, NY 10021
or call (212) 249-0100



I improved my guitar playing, I really enjoyed painting and my photography class and I still had time to play tennis and softball.

—R.K., Cleveland, Ohio



Everyone was so open and friendly, I've never had so many good friends from so many different places.

—D.K., Los Angeles, California



I liked the closeness, the freedom, everything!

—C.S., Paris, France



As a youth group officer, I found tons of ideas and good programs to take home.

—E.K., Boston, Mass.



My theatre classes were excellent.

—C.R., Jacksonville, Florida



Trip Day to New York City as wonderful.

—W.G., Seattle, Washington



I loved my Jewish studies class, I learned how to understand and study Torah.

—S.L., Wantagh, N.Y.



I met people from all over the world.

—J.L., Rochester, N.Y.



I learned about myself and my Jewishness.

—M.L., London, England



Kutz offers Jewish youth a chance to explore their Jewish identity and learn more about their heritage while being in a beautiful setting with great people.

—E.S., Miami, Florida

UAHC KUTZ CAMP INSTITUTE
Warwick, New York

* SUMMER 1983 APPLICATION *

Please check one: Academy Semester I ☐ Semester II ☐ Full Program ☐ Work Scholarship ☐
Kallah-Torah Corps ☐ Mitzvah Corps ☐

NAME: _____ HOME PHONE (AREA CODE) _____

ADDRESS: _____ CITY _____ STATE _____ ZIP _____

DATE OF BIRTH _____ SEX: MALE _____ FEMALE _____

PUBLIC SCHOOL GRADE ENTERING AS OF SEPTEMBER, 1983 _____

FATHER'S NAME: _____ OCCUPATION _____ BUS.PHONE () _____

HOME ADDRESS: _____

MOTHER'S NAME: _____ OCCUPATION _____ BUS.PHONE () _____

HOME ADDRESS: _____

NAME OF CONGREGATION: _____ ADDRESS: _____ ZIP _____

RABBI: _____

THIS APPLICATION IS _____ IS NOT _____ SPONSORED BY A FULL _____ PARTIAL _____ SCHOLARSHIP BY OUR CONGREGATION
SISTERHOOD _____ MEN'S CLUB _____ YOUTH GROUP _____ OTHER _____ (AMOUNT IF KNOWN \$ _____)

MAIL TO UAHC KUTZ CAMP, BOX 443, WARWICK, NEW YORK 10990 - deposit of \$150 must accompany
all applications.

(Signature of Adult (Parent/Rabbi/TYG Advisor) approving application)

PLEASE MAKE ALL CHECKS PAYABLE TO: UAHC KUTZ CAMP

Payment plan selected (please check one)

- Option 1. _____
2. _____
3. _____
4. _____

NOTE: If you have selected Option #4

(Card type (Mastercard or VISA)

Card Number _____

Expiration Date _____

Name as it appears on card _____

Questions? Please call or write: Rabbi Allan L. Smith, Director
Mr. Paul J. Reichenbach, Co-Director
UAHC Youth Division
838 Fifth Avenue
New York, New York 10021
212-249-0100

PLEASE SEND APPLICATION WITH DEPOSIT OF \$150 TO: REGISTRAR
UAHC KUTZ CAMP
Box 443
Warwick, New York 10990

DATES, FEES AND FACTS

UAHC KUTZ CAMP INSTITUTE

Warwick, New York

Exclusively for high school age youth from across North America and around the world.

DATES & FEES*

NFTY National Academy Semester I	- June 26 - July 21, 1983	\$ 800.00
Semester II	- July 21 - August 14, 1983	\$ 800.00
Full Program	- June 26 - August 14, 1983	\$ 1500.00
Work/Scholarship	- June 26 - August 14, 1983	\$ 1100.00
Kallah-Torah Corps	- June 26 - August 14, 1983	\$ 1300.00

Supplies Fee*

A fee of \$50 per semester or \$100 Full Program, Kallah-Torah Corps & Work/Scholarship, will be charged to cover the cost of linens, laundry, course materials and supplies. Payable when balance of camp fee is due.

Location:

UAHC Kutz Camp Institute, Bowen Road
Warwick, New York 10990.914-986-1174

Age Requirement:

Applicants over 14 years of age as of June 1, 1983 will be given preference

Choice of Semester:

Academy applicants only, may express a preference for Semester I, II or Full Program.

John and Jane Doe Applications:

When you do not know the name of your applicant, you may reserve spaces indicating John or Jane Doe. The space will be reserved so long as the deposit of \$150 has been received.

Deposit:

A deposit of \$150 must accompany any application. Mail to UAHC KUTZ CAMP, BOX 443, WARWICK, NEW YORK 10990.

Registration & Payment Due:

Applicants should apply or have spaces reserved by April 1, 1983. All applications received after April 1, 1983 will be accepted on a space available basis. The application blank should be filled out and mailed to UAHC KUTZ CAMP, BOX 443, WARWICK, NEW YORK 10990. \$150 deposit must accompany each application. Final payment due by May 1, 1983. All checks payable to UAHC KUTZ CAMP.
(See payment options).

Acceptance:

Acceptance is assured only when the deposit has been received with the application.

Refunds and Cancellations:

Full refunds of fees paid will be made up to May 1, 1983. \$50 processing fee will be withheld if cancellation of application is received after May 1, 1983. Once sessions have begun, no refunds will be made.

Information Bulletin:

Transportation information, health forms, clothing needs, etc. will be sent in the Spring with additional program information.

Work/Scholarship Applicants:

APPLICANTS MUST BE ENTERING HIGH SCHOOL SENIORS. Enrollment is limited to 30. Applications will be accepted on recommendation-financial need basis only. Work/Scholarship applicants will receive an additional questionnaire.

Personal Property:

It is mutually understood that the camp accepts no responsibility for loss of or damage to any camper's property at camp or going to and from camp.

The Kutz Camp does not discriminate on the grounds of race, color or national origin.

Transportation:

The camp provides charter busses from LaGuardia Airport and the UAHC building in New York City directly to Camp (additional fee). Camp staff members meet program participants at the airport and UAHC building. Program participants may be driven to camp by their parents if they choose.

YOU CAN AFFORD CAMP - FINANCIAL OPTIONS

Understanding that in these times there is a need for flexibility in terms of payment, the Kutz Camp is pleased to offer the following payment options:

OPTION I - \$150 deposit with application *NOTE: See below for Mitzvah Corps payment plan.
balance payable May 1, 1983

OPTION II * Four (4) payment plan (including supplies fee)

<u>DATE</u>	<u>Academy I,II</u>	<u>Full Program</u>	<u>Work/Scholarship</u>	<u>Kallah-Torah Corps</u>
	\$150 deposit with application	\$150 deposit	\$150 deposit	\$150 deposit
5/1/83	\$240	\$490	\$355	\$425
7/1/83	\$240	\$490	\$355	\$425
9/1/83	\$240	\$490	\$355	\$425

OPTION III* Six (6) payment plan (including supplies fee)

<u>DATE</u>	<u>Academy I,II</u>	<u>Full Program</u>	<u>Work/Scholarship</u>	<u>Kallah-Torah Corps</u>
	\$150 deposit with application	\$150 deposit	\$150 deposit	\$150 deposit
5/1/83	\$145	\$295	\$215	\$255
7/1/83	\$145	\$295	\$215	\$255
8/1/83	\$145	\$295	\$215	\$255
9/1/83	\$145	\$295	\$215	\$255
10/1/83	\$145	\$295	\$215	\$255

OPTION IV Visa or Mastercard

\$150 cash deposit with application.

Balance or any portion thereof, as requested, will be charged as of April 15, 1983.

* Please note: a small service fee has been added to these plans to cover the cost of processing.

MITZVAH CORPS : The Mitzvah Corps fee is \$800 plus supplies fee. (\$50.00)

It can be paid using any of the above plans. In addition, a liberal scholarship plan is available for this program. Those seeking aid should apply directly to: Rabbi Bernard Zlotowitz
UAHC
838 Fifth Avenue
New York, New York 10021

QUESTIONS?

Please write or call Rabbi Allan L. Smith, Director or Mr. Paul J. Reichenbach, Co-director at 212-249-0100 Exts. 234,231 or 200.

Henry S. Jacobs Camp

MACY B. HART
CAMP DIRECTOR

WINTER

P. O. Box 16528
Jackson, MS 39236
(601) 362-6357

SUMMER

P. O. Box C
Utica, MS 39175
(601) 885-6042

The religious retreat as a form of vacation



ARTHUR FROMMER
WORLDLY-WISE

The religious retreat is a form of vacation activity that most professional travel observers seem to have overlooked.

Yet more than a million Americans each year — the figure could amount to 1.5 million — devote large portions of their leisure time to sojourns in retreat houses.

And while the greater part of them limit the stays to week-ends, and to locations close at hand, a large number go for a week or two and many hundreds of miles away, and to centers whose broad range of subject matter and activities go well beyond the normal conception of a personal retreat.

As best as I can determine, there exist slightly more than 500 Catholic retreat centers and houses throughout the United States and Canada, about 150 Protestant centers, a dozen-or-so Jewish ones, and an emerging handful of Buddhist retreats.

Two good sources

■ For a near-comprehensive listing of the Christian retreats, send \$10 to Retreats International (Box 1067, Notre Dame, Ind. 46556; 219-239-5320) for the 1990 edition of its 60-page *Directory of Retreat Centers*.

It lists 594 such houses (520 or so Catholic retreats, about 75 Protestant ones), state by state, in pared-down fashion: addresses and phone numbers, name of director, months of operation, number of rooms, heavily abbreviated references to basic approaches and programs. You'll need to phone the centers listed for your area to determine which best meet your needs.

■ For a more complete list of Protestant retreat houses (totaling about 150 in all), write to the North American Retreat Directors Association (Olmsted Manor, Ludlow, Pa. 16333; 814-945-6512).

While its is simply a mailing list, not a directory with descriptions, the group will be pleased to furnish a copy free (after which you can phone the houses in your state for more details). Despite that kind offer, it would be a nice gesture to enclose \$2 for postage and handling.

Stressless atmosphere

Upwards of a hundred retreat houses have from 50 to 100 rooms and more apiece, with the remainder averaging from 20 to 40 rooms. At the smaller houses, you obviously can't expect a complete activities program.

Rather, in the monastic tradition of some (especially Catholic) retreats, the experience is largely a personal one, and guests take advantage of the stressless atmosphere and freedom from business/family pressures to ponder the eternal verities. For people of all religions, and of none, it is a refreshing interlude that places more petty concerns into perspective.

On the Notre Dame campus

The larger retreats have elaborate programs, often themed to major religious, social or political issues.

■ Probably the most extensive program (35 separate instructors, including widely known theologians, therapists and authors) is the month-long summer institute conducted every July on the campus of Notre Dame University by the previously mentioned Retreats International.

Here, in the casual setting of summertime, nearly 400 people (teachers, counselors, clergy, nurses, social workers and other concerned adults) are in attendance each week (and 1 week is all you need stay), auditing courses and seminars in spiritual and other church-related issues. But they also are dealing with family and youth problems, intimate relationships, morality and self-healing, and community needs.

Housing for the entire week amounts to only \$55 to \$75 per person (depending on the room), meals add about \$10 to \$15 a day; weeklong courses (five 2-hour sessions) are \$100 for tuition, in addition to an overall \$30 registration fee.

Write for literature to the address given earlier.

In the Berkshires

■ Genesis Spiritual Life Center, in the Berkshire mountains of Western Massachusetts, is a far less typical example of the large retreat center in that it is purposefully ecumenical in nature, appealing to people of all religious beliefs, even though it is administered by the Sisters of Providence, a Catholic order.

"We believe," says its credo, "that when persons of differing lifestyles and spiritualities connect, God's creative and healing energies are released... We give preference to those who often feel alienated from their church or society."

Heavily influenced by theories of the "New Age," the center's themed retreats include courses ranging from "Meditation Techniques" to "Guided Imagery and Music" to "A Jungian Look at the Christian Message," as taught by an equally ecumenical faculty that at times has included Lutherans, followers of Joseph Campbell, massage therapists and psychoanalysts.

Programs are offered throughout the year, as are "private retreats" (\$25 a day for room and board) and "directed retreats" (\$30 a day for room, board and the spiritual assistance of a Genesis staff member).

Write for literature from Genesis, 53 Mill St., Westfield, Mass. 01085; (413) 562-3627.

Upstate New York

■ Maryknoll Sisters Center in upstate New York, welcoming people of all churches and cultures, is the site for year-round group retreats that often deal with social change and other partly political issues, in the context of the intense religious missions for which the Maryknoll order is well known.

Six-day retreats range in subject matter from "Biblical Reflections," "Creation-Centered Spirituality" and "The Gospel in Context," on the one hand, to "Dismantling Racism," "U.S. Foreign Policy" and "Cultures Shaping People," on the other.

The rates are \$24 a day for room and full board, \$50 for registration and weeklong tuition.

Write Maryknoll Mission Institute, Maryknoll Sisters Center, Box 529, Maryknoll, N.Y. 10545; (914) 941-7575.

Maryknoll is at Ossining, N.Y., about 35 miles north of New York City.

Northern Georgia; Santa Barbara

Among the other areas of the country, the key larger retreats include:

■ Covecrest Christian Renewal Center in northern Georgia — A year-round Methodist complex with extensive program and facilities, and low rates of \$17.50 to \$23 per person, per day, for lodgings, much less for RVs and tent campers parked alongside the sweeping lawns.

Write Covecrest, Route 1, Box 1808, Tiger, Ga. 30576; (404) 782-5961.

■ On the West Coast, but much smaller and radically different in atmosphere, is the highly regarded, Anglican-run Mount Calvary Retreat House near Santa Barbara, Calif., overlooking the Pacific from a high vantage point. In the quiet atmosphere of this Protestant monastic community, in a large Spanish home with well-stocked library, individuals enjoy the essence of the retreat experience — for a suggested daily donation of \$45 for room and board.

Write c/o P.O. Box 1296, Santa Barbara, Calif. 93102; (805) 962-9835.

Jewish retreats

The available Jewish retreats are almost all long weekends in nature, and include most prominently:

■ The Brandeis-Bardin Institute — Cottages amid rolling hills, 45 minutes from Los Angeles; wide variety of themed programs on religious practices in the tradition of Reform Judaism; \$140 per weekend, full board.

Write 1101 Peppertree Lane, Brandeis, Calif. 93064; (818) 348-7201.

■ Hadassah "Kallahs" — Summer study weekends led by distinguished biblical scholars, at locations in several states and on themes ranging from "Family Relations in the Old Testament" to "Jews and Islam."

Write for dates, locations and prices from Hadassah Jewish Education Department, 50 W. 58th St., New York, N.Y. 10019.

■ Discovery Seminars — Presentations of 2½ days, Friday evening to Sunday afternoon, of basic elements in the Jewish heritage, mainly to persons with little background, in several locations throughout the country, from September through early summer; \$150 per person for tuition, room and board.

Write c/o 1220 Broadway, Suite 610, New York, N.Y. 10001; (212) 643-8800.

■ Jacobs Camp in Mississippi — Three large weekend retreats each year, September through May, discussing Jewish issues in a countryside setting that now also contains an 8,000-square-foot Museum of the Southern Jewish Experience, operated by the Union of American Hebrew Congregations; all-inclusive charge is only \$65 per person from Friday evening to Sunday evening.

Write Jacobs Camp, P.O. Box C, Utica, Miss. 39175; (601) 885-6042.

■ Camp Olin-Sang-Ruby in Oconomowoc, Wis. — A variety of midweek and weekend retreats, some for adults only, others for families or mature adults only, on themes such as "Spirituality and the High Holidays," "Jewish Literature and the Arts"; all-inclusive charge is \$125 to \$150 for 3 days, for lodgings and meals in an extensive complex on 180 acres along the shores of Lake LaBelle.

Write for information to 100 W. Monroe St., Chicago, Ill. 60603; (312) 782-1477.

Buddhist retreats

For a complete directory of Buddhist retreats in North America, send \$15.70 (includes postage and handling) to John Muir Publications (P.O. Box 613, Santa Fe, N.M. 87504) for a copy of its recently published 312-page *Buddhist America: Centers, Practices, Retreats* by Don Morreale.

Arthur Frommer Features Inc.

Ad Only	RT	Ad Only	RT	Ad Only	RT
Box	100	Box	100	Box	100

JOHN MUIR PUBLICATIONS

AF36
To M1

...at Camp Harlam



Living

Camp Harlam is located in the foothills of the Pocono mountains serving the New Jersey/West Hudson Valley Council, the Pennsylvania Council and the Mid-Atlantic Council of the Union of American Hebrew Congregations covering New Jersey through North Carolina. Our unique program stresses Jewish identity through a total experience of educational, athletic and social programming.

There are 28 cabins which comprise main camp, including a village for eight to ten year olds. In addition, teenagers have their own cabins, rec hall, fields, pool and dining hall in Chavurah Village. There are also over a dozen well-kept activity buildings and dozens of athletic fields and courts. The athletic facilities feature an indoor soccer and hockey arena and an indoor gymnasium with a regulation-size basketball court, two practice courts, three volleyball courts and a weight/exercise room. Other camp highlights are a multi-purpose arts complex, dark room, dance studio, radio station, video studio, screening room and indoor and outdoor stages. Harlam also has three swimming pools, a lake, two outdoor chapels, remote campsites and several recreation halls.

Our modern kitchen and extensive dining hall enable over 600 people to eat together. The infirmary has registered nurses in attendance at all times and a camp doctor is always available. The services of nearby Palmerton Hospital are available around the clock.

An experienced and mature staff of college-age and older men and women, many of whom are former Harlam campers, provide a special summer experience. Two counselors and a specialist are assigned to each cabin of 14 campers, and many international counselors add a unique element to Camp Harlam.

Junior Camp — Four or eight week experience blending athletics, aquatics, arts, education and special events for children entering 3rd through 9th grades.

Chavurah — Four or eight week program for campers entering either 10th or 11th grade. A program designed to allow teens to investigate topics of personal interest and emphasize their preferences for activities, highlighted by a three-day trip out of camp.

Machone (C.I.T.) — Eight week counselor-training and leadership program combined with camper-activities for teenagers who are entering the 12th grade. The program culminates in a hands-on counseling experience. Special application and additional details must be requested from the camp office.

Israel Experience — Six week study tour in Israel, offered in conjunction with the U.A.H.C. Youth Division, for campers who have completed the tenth grade. Special application and additional details may be requested from the camp office.

Playing

Daily athletic lessons and recreational periods allow the campers to learn and improve their skills in many sports as well as concentrate on their favorites.

- | | |
|--|-------------------------|
| ■ Tennis | ■ Street Hockey |
| ■ Softball | ■ Track and Field |
| ■ Volleyball | ■ Touch Football |
| ■ Soccer | ■ Ping Pong |
| ■ Basketball | ■ Weight Training |
| ■ Boating: canoeing, kayaking, paddle boating and tubing | ■ Non-competitive games |

Instructional Swim lessons are given daily in accordance with American Red Cross Swimming Levels and optional Life Saving courses are offered.

Free Swim for fun and recreation, in one of our three pools, is scheduled at least once a day.

Inter-camp Games with other Jewish camps in the area occur twice during the summer with competitions between over twenty teams as well as tennis matches and swim meets.

Trips range from a state park to amusement parks. The older units go on longer trips: a two-day rafting trip for Golan and a three-day trip for Chavurah. Every camper will go on at least two trips each session.

Creating

Arts & Crafts — Ceramics, enameling, leatherwork, silk-screen, weaving, painting, stain-glass, woodwork, candlemaking, batik, jewelry making, tie-dye, calligraphy and more.

Dance — Modern dance, creative dance, Israeli and international folk dance, and square dance programs.

Drama — Plays, musicals, theater games and all-camp productions.

Journalism — Creative writing, reporting, publication of a bi-weekly camp newsletter and parents' newsletter.

Music — Daily all-camp song sessions, choirs, instrumental and song instruction.

Nature and Campcraft — Hikes, camping skills, overnight campouts, and a scouting program facilitated by Israeli Scouts.

Photography — Basic photographic and darkroom instruction, exhibits of camper's work.

Radio — WJBH programming, music selection, radio shows, production and broadcasting.

Video — Creating, filming and editing of camp action.

Learning

Every unit explores a variety of age-appropriate Jewish themes, through many avenues of informal education: discussion, projects, games, presentations and special culminating events.

Shabbat is a very special time in camp as the entire community joins together to celebrate this special day through prayer and special programming. Shabbat services are prepared by campers and experienced by the entire camp community. The Eisendrath Chapel provides an inspirational, hillside setting for prayer.

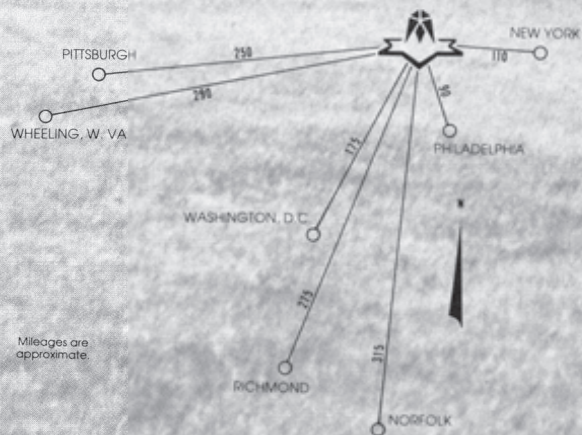
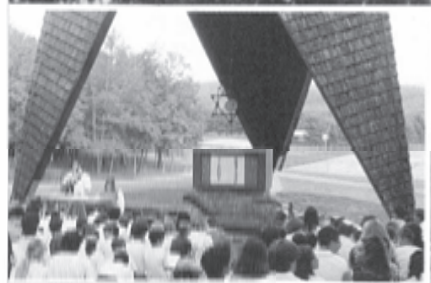
Judaics come in many shapes in Camp Harlam. Each day starts with a morning lesson and each meal begins and ends with the appropriate prayers and songs. Camp's Hebrew vocabulary offers everyone a familiarity with the language in an informal setting.

Visiting faculty, consisting of rabbis, cantors and educators, along with Israeli and English staff complement our counselors as teachers and resource people.

*Reform
Jewish
Living —*



Experience it...

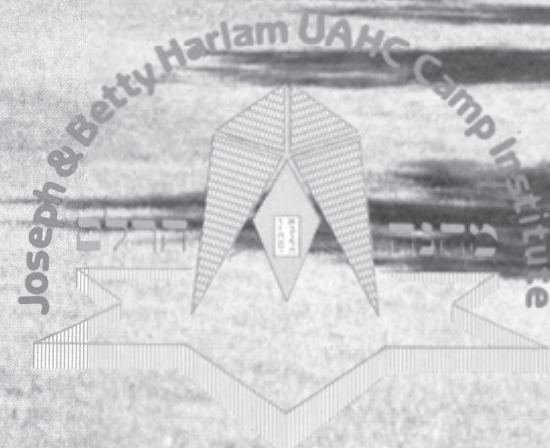


Harlam History

Camp Harlam, one of the nine U.A.H.C. camps around the country, opened in 1958 as a small camp whose primary benefactors were Mr. and Mrs. Joseph Harlam of Hazelton, Pa. Since that time, Harlam has grown to its present size of 350 acres and its present population of 460 campers each session and a staff of over 150.

Harlam is a camp for all seasons, providing educational weekends for religious school students and families. Camp's many winterized facilities are utilized by JFTY, PAFTY, MAFTY and other youth and adult groups, religious schools, and special organizations for fall, winter and spring retreats.

Arie Gluck has served as Director of Camp Harlam since 1966. He studied Physical Education at Wingate Institute in Israel and completed his Masters in Education at New York University. Camp Harlam has grown and prospered greatly through his vision, planning and leadership of over 25 years.



WINTER ADDRESS: 2111 Architects Building, 117 S. 17th Street,
Philadelphia, PA 19103, 215-563-8183
SUMMER ADDRESS: Kresgeville, PA 18333, 717-629-1390

EISNER CAMP INSTITUTE

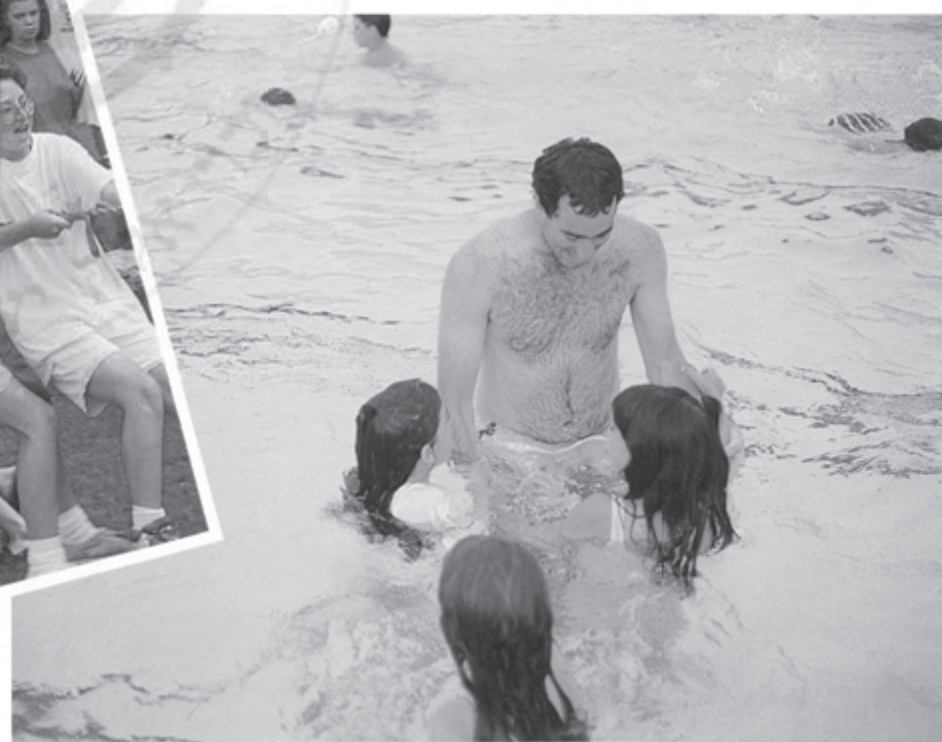
GREAT BARRINGTON, MASSACHUSETTS

Winter address: 838 Fifth Avenue, New York, NY 10021-7064

(212) 249-0100



Programs
for
7-17
Year Olds



11th Grade Program
to Israel



Eisner Camp—More for You



EISNER CAMP INSTITUTE

838 Fifth Avenue
New York, NY 10021-7064
(212) 249-0100

Dear Friends:

A wonderful summer experience awaits you at the Eisner Camp Institute.

A summer camp experience offers children the chance to enjoy new activities, establish lasting friendships, and have fun. A Jewish camping experience adds the opportunity to identify and participate in the richness and diversity of our culture.

Eisner is an incredible camp. It's a mature, caring staff; an incredible program at a magnificent facility; a place to grow and develop.

Please review the enclosed information carefully. We'd welcome the opportunity to meet you and further discuss the Eisner Camp Institute. We are looking forward to being of service to your family.

B'shalom,
David Friedman
Director



EISNER CAMP INSTITUTE

The Setting

Located in Great Barrington, Massachusetts are 600 acres forming the Eisner Camp Institute. This Berkshire Mountain setting makes for an idyllic camp setting accredited by the American Camping Association. Eisner's athletic facilities include three tennis courts, two basketball courts, a z-shaped swimming pool with diving well, sand beach volleyball courts, softball and soccer fields. Eisner is a mixture of old and new, with modern facilities nestled amidst magnificent historic buildings. The camp has several theaters, an art center, a photo lab, a large recreation building, sanctuary, and indoor sites for each unit. The modern dining room provides three delicious, well balanced meals per day served family style. Popular with campers are the soup and salad bars.

Spacious camper cabins include showers and rest rooms. The modern infirmary is staffed by nurses and physicians, and the camp is minutes away from hospital facilities. The nearby Appalachian trail and Housatonic River provide outstanding recreational opportunities, along with a complete low ropes course. Centered in camp is our own spring fed lake used for boating and canoeing.

The Staff

Camp Director David Friedman returns to Eisner with years of professional camping experience. David, a former school psychologist, holds a master's degree in education. His wife and three children join him at camp.

Eisner's professional staff includes unit administrators who are all college graduates. The camp staff includes superbly trained specialists, many of whom are teachers and youth workers during the school year. Complimenting the professional staff at Eisner is a faculty of rabbis/educators who are in residence at camp throughout the summer.

Campers are placed in cabins with trained college age counselors. Many of the counselors are former campers, adding to the sense of community and tradition at Eisner. Staff members are selected on the basis of their maturity, ability to work with children, and commitment to the ideals of the camp.

The Program

Eisner offers a richly diversified program for children entering grades 2-12. A primary goal of the camp is for children to positively identify as Jews. A nationally recognized leader in informal Jewish education, Eisner provides a natural environment for children to learn and grow. Campers participate in an active and educational program. They

develop their own services with the expert guidance of faculty and staff. The camp includes a wide range of social, recreational, and cultural activities in which campers participate.

The developmental needs for children of different ages are accounted for at Eisner. Campers individually choose from many activities. Each day there is free time with special activities offered. Eisner's location in the Berkshires allows campers the unique opportunity to attend attractions such as Jacob's Pillow, Tanglewood, and the Berkshire Theater. Campers also enjoy outings to local recreation complexes.

Special Programs

CHAVERIM: Program option for campers entering grades 7-9. Campers will participate in a wilderness program including hiking, canoeing, and camp outs. When at camp, the group will stay in cabin tents on Olim Hill. Campers will also participate in the general camp program of Eisner. This limited enrollment program is designed for campers who wish to have a more intense out-of-doors experience. Further information is available from the camp office.

OLIM: A program tailored to the needs of students entering grades 10-11. Leadership development, group identity, and social/recreational programs are melded to form a unique experience. Olim campers work with their staff members in a democratically based environment developing their own programs. Second session campers plan and take a 6 day out-of-camp trip.

MACHON: Eisner Camp's future counselors are trained in this full summer program. Designed for entering high school seniors, the program includes seminars, trips, service to the camp, and an extensive experience working directly with campers. Enrollment for this program is very limited. Interested individuals must complete an application form and personal interview. For further information, please contact the camp office.

DAY CAMP: Designed for residents of the southern Berkshires, the camp serves children aged 5-8. The Day Camp offers a full day program of recreation, swimming, crafts, and fun in Eisner's Jewish setting. Further information on this program is available from the camp office.

EISNER ISRAEL PROGRAM: Six glorious weeks in Israel with camp friends. This incredible experience, offered in conjunction with NFTY, is frequently seen by campers and their parents as the single most positive teen-age Jewish experience. The program provides a wonderful sense of Israel—its land, people, and our shared history and culture. Information is available from the camp office.



EISNER CAMP INSTITUTE IS A PROGRAM OF THE UNION OF AMERICAN HEBREW CONGREGATIONS' NORTHEAST COUNCIL
AND THE NEW YORK FEDERATION OF REFORM SYNAGOGUES.

Questions?
PLEASE CALL US
AT
212-249-0100
EXT. 496

Sports

- Tennis
- Soccer
- Basketball
- Volleyball
- Softball
- New Games
- Ultimate Frisbee
- Gymnastics
- Inter-Camp games
- Roller Rink

Cultural Arts

- Drama
- Israeli Dance
- FM Radio Station
- Newspaper
- Photography
- Arts & Crafts

Nature/Environment

- Low Ropes Course
- Environmental Education
- Overnights
- Cookouts
- Miles of Hiking Trails
- Appalachian Trail
- Housatonic River

Education/Judaica

- Jewish Studies Program
- Rabbis in residence
- Camper Led Services
- Joyous Celebration of Shabbat



Eisner Camp—More for You