



## Abba Hillel Silver Collection Digitization Project

Featuring collections from the Western Reserve Historical Society and  
The Jacob Rader Marcus Center of the American Jewish Archives

### **MS-4787: Abba Hillel Silver Papers, 1902-1989.**

Series I: General Correspondence, 1914-1969, undated.

Sub-series A: Alphabetical, 1914-1965, undated.

---

Reel  
49

Box  
17

Folder  
1191

National Farm School, 1923-1931.



DANIEL GIMBEL  
MARKET 8TH TO 9TH STREETS  
PHILADELPHIA, PA.

January 22, 1923.

*National  
Farm  
School-*

*(Dr Krauskopf)*

Rev. Dr. Abba Hillel Silver,  
The Temple,  
55th & Central Ave.,  
Cleveland, Ohio.

Dear Dr. Silver:

Last Sunday a friend of mine, whom perhaps you know, Rabbi Krauskopf, showed me something which was so interesting that I am finding time to write you about it. I am certain that you will be glad to know that out in Doylestown, 25 miles from this city, on five hundred of the finest acres in Bucks County, The National Farm School is bringing city young men, nearly one hundred and fifty every year, back to the farm, teaching them agriculture in all its branches. All of them are housed, fed and clothed and taught without charge.

You will probably be astounded when I tell you that Rabbi Krauskopf had started this school twenty-five years ago with his own savings and those public contributions that he was able to raise through his efforts. Then there were 125 acres and a single building, a single cow, two horses, and a few chickens. On Sunday he showed me forty buildings, 138 heads of cattle, twenty-seven horses, 1980 laying hens, swine calves, and colts, all in the finest condition.

The young men themselves were the most interesting products of this farm. These fellows range from sixteen to twenty when they are admitted. They must be grammar school graduates, but most of them are high school students. There isn't a finer bunch anywhere than the young men who are taking this three year course. They work just as hard at the plow as in the school room, from sunrise to sunset, just as the farmer does. They are going to be producers - the future backbone of America from which will be built a sturdier nation.

I am, as I said before, so very much interested in this school that I should like you to be equally interested.

Sincerely yours,

*Daniel Gimbel*

P.S. Do you remember the East Side boy - Abraham Krotoshinsky who saved the "Lost Battalion?" He graduated from the National Farm School this spring, and I have just heard that he is in charge of a farm colony in Palestine. Isn't that an interesting commentary on the progress of the immigrant Jew?



JACOB D. LIT  
MARKET AND EIGHTH STREETS  
PHILADELPHIA

January 24th, 1923

Rev. Dr. Abba Hillel Silver,  
The Temple,  
55th & Central Ave.  
Cleveland, Ohio.

Dear Dr. Silver:

There were six of us around the table at the Mercantile Club the other night. We were talking about the rewards of service. Someone mentioned Krauskopf. "Krauskopf, the Philadelphia Rabbi?" we asked. "Yes."

"When all American Jewry called it madness, he started The National Farm School, out in Bucks County, twenty-five years ago. He felt that the importance of encouraging Jewish youth for farm life and training them for it was so great that he put his own savings into what seemed a hopeless folly. He toured the country pleading for his School. He gave every cent he received for officiating at marriages, funerals and lectures, to the growing school.

"Indeed, to-day the Farm School occupies 500 acres of land, two score of buildings, and boasts of several hundred graduates, a large majority doing agricultural work. The School started with a registration of four and to-day its student body numbers 130 and only lack of accommodations prevents registration of 500. Those of us who know the Jewish problem in America, realize that we will approach measurably to a solution of it if we succeed in getting the Jew away from the crowded city and back to the land. Hence, we should realize that The National Farm School and its founder are rendering notable service to all Jewry and America."

After we had thought much and said little about the things we had heard, someone suggested: "Let's honor Dr. Krauskopf in appreciation of his work. It is the Silver Jubilee of the School."

As a result of this suggestion, we are taking this matter up with a group of prominent Philadelphians.

Yours sincerely,

*Jacob D. Lit*



SAMUEL S. FLEISHER  
26TH AND REED STREETS  
PHILADELPHIA

February 5, 1923.

Rev. Dr. Abba Hillel Silver,  
The Temple,  
55th & Central Avenue,  
Cleveland, Ohio.

Dear Doctor:

The Silver Jubilee of the National Farm School will be celebrated on Thursday Evening, March 27th, 1923, with a dinner at the Bellevue Stratford in this City. We intend to make this occasion unique in American Jewish history, and as an assurance of your presence, we now invite you to be one of our guests.

Some days ago you were informed about a testimonial that the Jews of Philadelphia were planning for Dr. Krauskopf, founder of the School. It was suggested that we tell you how we intend to honor this distinguished servant of Judaism and Humanity. In Philadelphia a Silver Jubilee Committee has been formed with Harry B. Hirsh, Chairman; Albert M. Greenfield, I. H. Silverman and Philip Sterling, Vice Chairmen and Herbert D. Allman and Joseph H. Hagedorn.

We have joined them, as have other citizens of Philadelphia, and it was decided to commemorate the twenty-fifth anniversary of the National Farm School and at the same time honor Dr. Krauskopf by raising One Million Dollars for a Building and Endowment Fund to enable the School to expand to meet the growing demands upon it and to relieve Dr. Krauskopf of his continued financial responsibilities towards the institution which he has courageously borne since its inception.

A nation-wide Silver Jubilee Campaign has now been started and committees have been and are being formed in various cities of the country. We, in Philadelphia, have organized, and as a result of our efforts have obtained \$250,000, one-quarter of the entire fund.

Your City is asked to do its share and we know that when you are called on to serve on your local Silver Jubilee Committee you will be more than willing to co-operate with us in our efforts to raise One Million Dollars.

Yours sincerely,

*Samuel S. Fleisher*  
*Jacob L. Lip*  
*Joseph W. Shellenberg*  
*Samuel S. Fleisher*



*The Silver Jubilee Committee of The National Farm School  
cordially invite you to be their guest at dinner  
at The Bellevue-Stratford Hotel, Philadelphia, Pennsylvania  
Tuesday, March twenty-seventh, nineteen twenty-three  
at seven o'clock*

*The occasion will be signally marked by addresses  
on the life work of Dr. Joseph Krauskopf by several of the  
most distinguished men of America  
No subscriptions will be solicited or accepted*

*Kindly reply to Harry B. Hirsch  
1512 Walnut Street, Philadelphia, Pa.*



BUSINESS MEN'S COUNCIL

ADAM L. GIMBEL, *Chairman*  
SAMUEL VAUCLAIN  
EX-GOV. WM. A. SPROUL of Pennsylvania  
MANNY STRAUSS  
ABRAHAM ERLANGER

EXECUTIVE BOARD

DAVID BURPEE  
JAMES A. PRATT  
GRANT WRIGHT  
REV. DR. STEPHEN S. WISE  
REV. DR. NATHAN KRASS  
ADOLPH LEWISOHN  
ISRAEL UNTERBERG  
MRS. ALEXANDER KOHUT  
SAMUEL C. LAMPORT  
ESTELLE M. STERNBERGER  
BENJAMIN MORDECAI  
MRS. H. A. GUINZBERG  
STANLEY ISAACS  
SOPHIE IRENE LOEB

THE NATIONAL FARM SCHOOL  
EXPANSION PROJECT

ONE PARK AVENUE  
NEW YORK

ABRAHAM ERLANGER, *National Chairman*

GEORGE J. HEXTER, *Executive Secretary*

Telephone Ashland { 9173  
9174

BEN GREY, *National Director*  
D. E. WESHNER, *Associate Director*

November 9, 1926.

Reverend Abba Hillel Silver,  
Zionist Drive,  
114 Fifth Avenue,  
New York City.

Dear Reverend Silver:

I would like to have a few minutes with you at the above address on Wednesday afternoon, November 10th to discuss The National Farm School's Campaign in Ohio.

The State offers very fine prospects, and you can be very helpful if you will give us active participation in Ohio and also be present on the night of November 24th at the dinner to be given by Governor Donahey in Columbus, to address the State's delegates.

As to myself, I beg to refer you to our friend Dr. Stephen Wise.

I shall call you on the telephone tomorrow at about four o'clock, and hope you will see me at any hour you may name.

Very truly yours,

*Abraham Erlanger*  
National Chairman.

AE:MB



# THE NATIONAL FARM SCHOOL



1—Apple Picking at National Farm School.  
4—Learning how to repair a tractor.

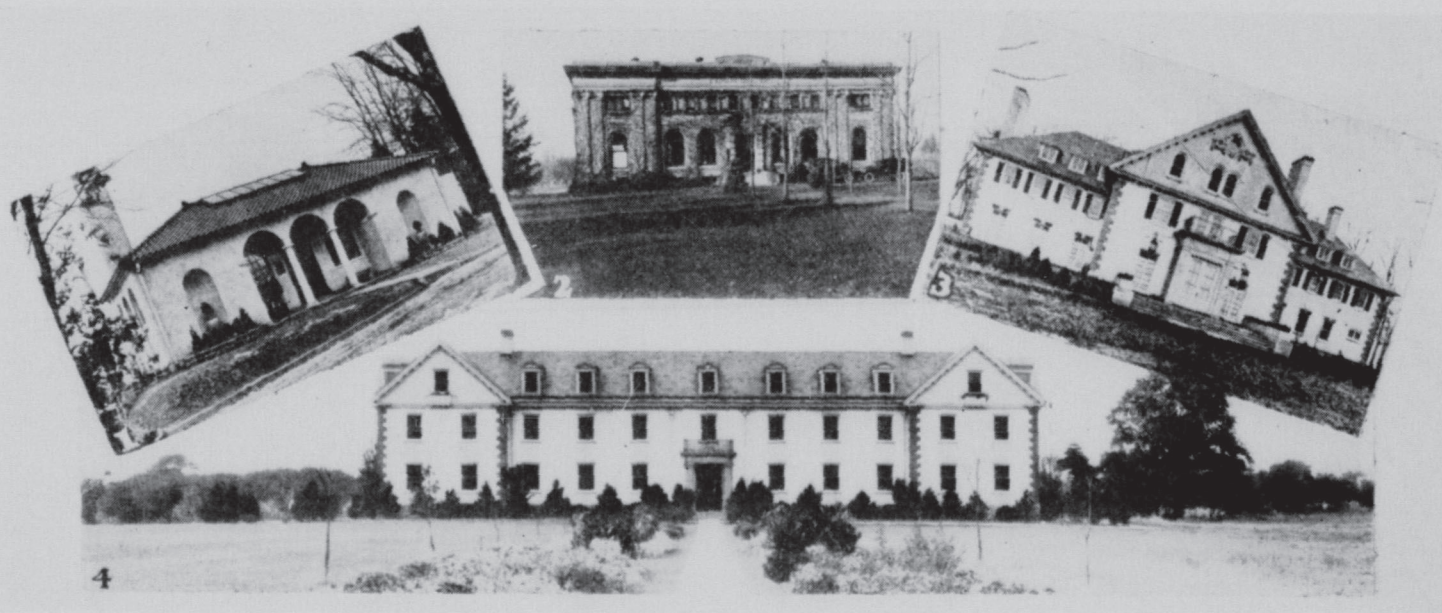
2—A class in Raising Carnations.  
3—Orchard Work.  
5—Raising vegetables at National Farm School.



1—Football practice at National Farm School.

2—Straus Dairy Plant,  
Erlanger Barns.

3—Interior of Krauskopf Memorial Library.



1—Hirsh Botanical Laboratory.

2—Segal Hall.

3—Lasker Hall.

4—Ulman Hall.



# \$5,000,000 EXPANSION PROJECT ENDORSED BY CONFERENCE

The following resolution, presented by the Ways and Means Committee of The National Farm School Conference held at the Hotel Biltmore in New York City, was unanimously endorsed and accepted by the attending delegates of Governors, Mayors and outstanding educational and industrial leaders whose names are hereunder noted:

RESOLVED: 1. That the student body at The National Farm School should be steadily increased so as to give opportunity to the boys and girls throughout the country, and especially in the congested centers of population to obtain the benefits of the kind of education now being given by The National Farm School.

2. That the sum of fifteen million\* dollars is necessary to carry out a comprehensive program of national expansion.

3. That each state send its quota of boys.

4. That the sum of fifteen million dollars be raised by general appeal to the United States, to be paid during a period of five years.\*

5. That it is the sense of this Committee that the Governors' Delegates, the Mayors' Appointees and the Lay Delegates of each State, all of whom have contributed so much to this Conference, shall now form themselves into Committees to represent their respective States on the Auxiliary Committee of The National Farm School.

DR. B. O. AYLESWORTH, *Governor's Delegate, Director of Markets, Denver, Colo.*

FERDINAND J. ACH, *Mayor's Delegate, Dayton, Ohio.*

HERBERT D. ALLMAN, *President, N.F.S., Philadelphia, Pa.*

RABBI MAX D. ARTZ, *Mayor's Delegate, Scranton, Pa.*

LEON A. BAER, *Mayor's Delegate, San Antonio, Texas.*

MRS. EVERETT BARNES, *Representative of Daughters of American Revolution, New York City.*

RABBI SAMUEL BENJAMIN, *Mayor's Delegate, Jacksonville, Fla.*

O. H. BENSON, *Advisor of Rural Scouting, Boy Scouts of America, Edgemoor-Bethesda, Md.*

MISS MARIE BENTON, *Governor's Delegate, Little Rock, Ark.*

J. C. BROWN, *Mayor's Delegate, Williamsport, Pa.*

JUDGE JACOB CAPLAN, *Mayor's Delegate, New Haven, Conn.*

L. D. CODDEN, *Mayor's Delegate, St. Paul, Minn.*

MISS FELICE COHEN, *Mayor's Delegate, Attorney at Law, Reno, Nevada.*

ISIDORE COHEN, *Mayor's Delegate, Miami, Fla.*

LEO A. COHILL, *Governor's Delegate, Clearspring, Md.*

NATHAN COHN, *Mayor's Delegate, Nashville, Tenn.*

PROF. JOS. F. COX, *Governor's Delegate, Michigan State College, East Lansing, Mich.*

MISS MARY E. CRESWELL, *Agricultural College, University of Georgia, Athens, Ga.*

MRS. H. A. DANIELS, *Secy. Rhode Island Red Club of America, Grafton, Mass.*

W. A. DELZELL, *Governor's Delegate, Salem, Oregon.*

NESTOR DREYFUS, *Mayor's Delegate, New London, Conn.*

C. O. DUBOIS, *Dir. State School of Agriculture, Delhi, N. Y.*

HON. R. W. DUNLAP, *Assistant Secretary of Agriculture, Washington, D. C.*

WM. B. DURYEE, *Governor's Delegate, Trenton, N. J.*

MRS. ELMER ECKHOUSE, *Nat'l Council Jewish Women, Dept. Farm & Rural Work, Newark, N. J.*

HARRISON FAHRNKOPF, *Governor's Delegate, Bloomington, Ill.*

RABBI ABRAHAM J. FELDMAN, *Nat'l Aux. Board, Executive Bd. National Farm School, Hartford, Conn.*

HON. JOHN F. FRIERSON, *Governor's Delegate, Columbus, Miss.*

PROF. L. I. FRISBIE, *Governor's Delegate, Agricultural Department, University of Nebraska, Lincoln, Neb.*

MAURICE FELS, *Member of National Farm School Board, Philadelphia, Pa.*

H. C. FETTEROLF, *Assistant Director Vocational Education, Harrisburg, Pa.*

DR. WM. H. FINESHRIER, *Member National Board, Philadelphia, Pa.*

L. D. FISHER, *Mayor's Delegate, Milwaukee, Wis.*

HORACE T. FLEISHER, *Farm School Board, Oaklane, Pa.*

HON. J. FLOERSHEIM, *Governor's Delegate, Roy, New Mexico.*

SIMON FRIEDBERGER, *Honorary Member, Philadelphia, Pa.*

A. K. GETMAN, *Governor's Delegate, State Department-Agricultural Education, Albany, N. Y.*

S. H. GIBBONS, *Governor's Delegate, Auburn, Ala.*

DR. ARTHUR W. GILBERT, *Comm. of Agriculture, Boston, Mass.*

RABBI SAMUEL H. GORDON, *Mayor's Delegate, Salt Lake City, Utah.*

LEOPOLD M. GOULSTON, *Mayor's Delegate, Boston, Mass.*

MARGARET HAMLIN, *Agr. Counsellor for Women, Mass. Agr. College, Amherst, Mass.*

G. H. HECKE, *Governor's Delegate, Sacramento, Cal.*

M. R. HEMPHILL, *Governor's Delegate, Pine Bluffs, Wyo.*

MRS. S. T. HENNING, *Women's Advisory Comm., Shelbyville, Ky.*

SAMUEL HESSBERG, *Mayor's Delegate, Albany, N. Y.*

MRS. M. HOLZMARK, *Mayor's Delegate, Kansas City, Kan.*

L. R. HUMPHREYS, *Governor's Delegate, Salt Lake City, Utah.*

S. G. JUDD, *Governor's Delegate, Randolph Center, Vt.*

SAM L. KAHN, *Mayor's Delegate, Memphis, Tenn.*

HOWARD KAYSER, *Mayor's Delegate, Minneapolis, Minn.*

WM. KENDRICK, *Governor's Delegate, Weston, West Va.*

MRS. MARIE J. KING, *Women's Advisory Committee, Salmon, Idaho.*

JACOB B. KLEIN, *Mayor's Delegate, Bridgeport, Conn.*

CHAS. KLINE, *Mayor's Delegate, Allentown, Pa.*

DR. H. B. KNAPP, *Director New York State Institute of Applied Agriculture, Farmingdale, N. Y.*

REV. DR. NATHAN KRASS, *Temple Emanuel, New York City, N. Y.*

LAMBERT, GEO. A., *Governor's Delegate, Rural Retreat, Va.*

ARTHUR LEHMAN, *New York City, N. Y.*

W. W. LONG, *Governor's Delegate, Clemson College, S. C.*

O. K. MABEN, *Governor's Delegate, Garner, Iowa.*

MAX MANISCHEWITZ, *Mayor's Delegate, Cincinnati, Ohio.*

BARNET E. MARKS, *Mayor's Delegate, Phoenix, Arizona.*

V. C. MARSHALL, *Governor's Delegate, Heidenheimer, Tex.*

JEWELL MAYES, *Secretary State Board of Agriculture, Jefferson City, Mo.*

MAX MAYFIELD, *Governor's Delegate, Boise, Idaho.*

EARLE H. MCKENZIE, *Governor's Delegate, Bristol, R. I.*

M. H. MEDNIK, *Mayor's Delegate, St. Louis, Mo.*

A. B. MEREDITH, *Comm. of Education, Hartford, Conn.*

F. A. MERRILL, *United States Department of Agriculture, Washington, D. C.*

LEON MERZ, *Honorary Member, Philadelphia, Pa.*

MAX A. MEYEROVICH, *Mayor's Delegate, Youngstown, Ohio.*

C. P. NORGORD, *Assistant Commissioner Department of Farms and Markets, Albany, N. Y.*

MORRIS H. OLDER, *Mayor's Delegate, Hartford, Conn.*

HON. BERNARD PATTEN, *Commissioner of Markets, New York City, N. Y.*

MAX L. PINANSKY, *Governor's and Mayor's Delegate, Portland, Me.*

LOUIS PIZITZ, *Mayor's Delegate, Birmingham, Ala.*

JAMES A. PRATT, *Member Executive Board of National Farm School, Williams School, Pa.*

SIDNEY RITTENBERG, *Mayor's Delegate, Charleston, S. C.*

EDW. F. REINER, *National Executive Secretary of Boy Rangers of America, New York City, N. Y.*

RABBI LUDWIG ROEDER, *Mayor's Delegate, Patterson, N. J.*

H. O. SAMPSON, *Supervisor of Agricultural Education, Trenton, N. J.*

MORRIS SCHAFFNER, *Mayor's Delegate, Erie, Pa.*

RABBI ABRAHAM SCHECHTER, *Mayor's Delegate, Houston, Texas.*

ABNER SCHWARTZ, *Mayor's Delegate, Norwich, Conn.*

JOSEPH SCHONTHAL, *Mayor's Delegate, Columbus, Ohio.*

HON. A. SHAPIRO, *Mayor's Delegate, Winston-Salem, N. C.*

I. H. SILVERMAN, *Honorary Member National Board, Philadelphia, Pa.*

A. H. SMALL, *Governor's Delegate, Creston, Mont.*

JOSEPH SMITH, *Mayor's Delegate, Providence, R. I.*

DAVID SNELLENBURG, *Mayor's Delegate, Wilmington, Del.*

RALPH SNYDER, *Governor's Delegate, Manhattan, Kansas.*

DR. ANDREW M. SOULE, *President Georgia State College of Agriculture, Athens, Ga.*

DR. C. D. SPIVAK, *Mayor's Delegate, Denver, Colo.*

JUDGE JACOB STACEL, *Mayor's Delegate, Cleveland, Ohio.*

JUDGE HORACE STERN, *President Philadelphia Federation Jewish Charities, Philadelphia, Pa.*

MRS. DORA STOCKMAN, *Member State Board Agriculture, East Lansing, Mich.*

DR. W. C. SULLIVAN, *Governor's Delegate, Kaukauna, Wis.*

MANO SWARTZ, *Mayor's Delegate, Baltimore, Md.*

A. C. TRUE, *Specialist States Relations Work, Department of Agriculture, Washington, D. C.*

MARY B. VAN ARSDALE, *New York State Council Farms and Markets—Teacher's College, New York City, N. Y.*

MRS. M. VAN RENNSSELAER, *Director New York State College of Home Economics, Cornell University, Ithaca, N. Y.*

DR. C. W. WARBURTON, *Director Extension Service, United States Department of Agriculture, Washington, D. C.*

H. HIRAM WEISBERG, *Mayor's Delegate, Syracuse, N. Y.*

RICHARD J. WERNER, *Mayor's Delegate, San Francisco, Cal.*

E. M. WILLIAMS, *Governor's Delegate, Monroe, Ga.*

PROF. P. H. WILSON, *Governor's Delegate, Wake Forest, N. C.*

DR. THOMAS D. WOOD, *Professor Physical Education, Teacher's College, Columbia University, New York City, N. Y.*

JAMES WORK, *Member Farm School Board, Lakehurst, N. J.*

GRANT WRIGHT, *Member Executive Board, Philadelphia, Pa.*

C. H. YOUNG, *Governor's Delegate, Concord, N. H.*

\* The immediate phase of the expansion project calls for \$5,000,000 for the next three years representing the first unit of the proposed expansion.



BUSINESS MEN'S COUNCIL

ADAM L. GIMBEL, *Chairman*  
SAMUEL VAUCLAIN  
EX-GOV. WM. A. SPROUL of Pennsylvania  
MANNY STRAUSS  
ABRAHAM ERLANGER

EXECUTIVE BOARD

HARRY B. HIRSCH, *Chairman, Board of Trustees*  
HERBERT D. ALLMAN, *President*  
JOSEPH H. HAGEDORN, *Vice-Chairman*  
ISAAC H. SILVERMAN, *Treasurer*  
HART BLUMENTHAL  
ADOLPH EICHHOLZ  
HARRY FELIX  
SIMON FRIEDBERGER  
DANIEL GIMBEL  
MORRIS A. KAUFMANN  
ALFRED M. KLEIN  
LEON MERZ  
LOUIS NUSBAUM  
BERNARD SELIG  
JOS. N. SNELLENBURG  
HENRY S. BELBER  
WM. H. FINESHRIEBER  
HENRY A. JAMES  
M. R. KRAUSKOPF  
JAS. A. PRATT  
GRANT WRIGHT  
MORRIS FLEISHMAN  
FRED. P. GRUENBERG  
JOS. H. HINLEIN  
LOUIS A. HIRSCH  
BERNARD KOHN  
JAMES WORK  
JOHN ZIMMERMAN  
DAVID BURPEE  
MAURICE FELS  
HORACE FLEISHER  
ROY A. HEYMANN  
CHARLES KLINE  
LEON ROSENBAUM  
PHILIP STERLING  
JULIAN A. HILLMAN  
LOUIS SCHLESINGER

# THE NATIONAL FARM SCHOOL EXPANSION PROJECT

ONE PARK AVENUE  
NEW YORK

ABRAHAM ERLANGER, *National Chairman*

GEORGE J. HEXTER, *Executive Secretary*

Telephone Ashland } 9173  
9174

BEN GREY, *National Director*  
D. E. WESHNER, *Associate Director*

November 13th 1926.

Rabbi Abba Hillel Silver,  
Cleveland, Ohio.

Dear Doctor:-

I expected to write to you yesterday in reference to the agricultural institution<sup>s</sup> which I am supporting in Palestine. The young lady who has these matters in hand is away and will not be back until Tuesday. I shall then take the matter up again and give you the name of the institution<sup>s</sup>, and, as suggested by you, you can then advise me where I can place \$2,000 or \$3,000 in a fund that will further the agricultural work in Palestine.

I was indeed very much pleased that you accepted the appointment to deliver an address at the opening of the Ohio campaign, at the banquet given by Governor Donahey to the Jewish and Christian delegates of that state. I feel certain, that as far as your time will permit, you will be of further value in advancing this very worthy cause.

Again I wish to repeat what I said to you when in New York - you will be the chief lever in setting the state of Ohio actively going so that the National Farm School Project thruout the west and even the entire country through your splendid efforts will receive a vigorous start.

With best wishes, I am

Very sincerely yours,

*Abraham Erlanger*  
Abraham Erlanger  
National Chairman

*Banquet Evening Nov. 24th*  
AE:ML  
*at Columbus, Ohio*



BUSINESS MEN'S COUNCIL

ADAM L. GIMBEL, *Chairman*  
SAMUEL VAUCLAIN  
EX-GOV. WM. A. SPROUL of Pennsylvania  
MANNY STRAUSS  
ABRAHAM ERLANGER

EXECUTIVE BOARD

DAVID BURPEE  
JAMES A. PRATT  
GRANT WRIGHT  
REV. DR. STEPHEN S. WISE  
REV. DR. NATHAN KRASS  
ADOLPH LEWISOHN  
ISRAEL UNTERBERG  
MRS. ALEXANDER KOHUT  
SAMUEL C. LAMPORT  
ESTELLE M. STERNBERGER  
BENJAMIN MORDECAI  
MRS. H. A. GUINZBERG  
STANLEY ISAACS  
SOPHIE IRENE LOEB

THE NATIONAL FARM SCHOOL  
EXPANSION PROJECT

ONE PARK AVENUE  
NEW YORK

ABRAHAM ERLANGER, *National Chairman*

GEORGE J. HEXTER, *Executive Secretary*

Telephone Ashland { 9173  
9174

BEN GREY, *National Director*  
D. E. WESHNER, *Associate Director*

November 17, 1926.

Rabbi Abba Hillel Silver,  
Cleveland,  
Ohio.

Dear Doctor:

Following up my communication of the 13th, I have contributed to the Bne Benjamin Bank, Jerusalem, Palestine, for loans made to farmers. I will not consider that in what I now purpose writing, namely, I am paying at the present time for seven boys at the Mikveh Israel School for Boys, and for three girls at the Mahalal School for Girls to obtain a scientific agricultural education. I have no positive statement on my notes, but I assume it embraces Jewish children as well as children of other faiths.

Now, if you will be good enough to state to which one of these institutions, or perhaps both you desire a fund of \$2,000 or \$3,000 to be contributed in the furtherance of agricultural work, I shall do as I agreed.

I am going to Columbus, Ohio, and no doubt will be there about November 22nd, until after the National Farm School Dinner to be presided over by Governor Donahey, and look forward to seeing you there in good health and spirits.

Very sincerely yours,

*Abraham Erlanger*

AE:MB

P.S. The National Farm School Dinner is to take place on Wednesday evening, November 24th, 1926.



BUSINESS MEN'S COUNCIL

ADAM L. GIMBEL, *Chairman*  
SAMUEL VAUCLAIN  
EX-GOV. WM. A. SPROUL of Pennsylvania  
MANNY STRAUSS  
ABRAHAM ERLANGER

EXECUTIVE BOARD

DAVID BURPEE  
JAMES A. PRATT  
GRANT WRIGHT  
REV. DR. STEPHEN S. WISE  
REV. DR. NATHAN KRASS  
ADOLPH LEWISOHN  
ISRAEL UNTERBERG  
MRS. ALEXANDER KOHUT  
SAMUEL C. LAMPORT  
ESTELLE M. STERNBERGER  
BENJAMIN MORDECAI  
MRS. H. A. GUINZBERG  
STANLEY ISAACS  
SOPHIE IRENE LOEB

THE NATIONAL FARM SCHOOL  
EXPANSION PROJECT

ONE PARK AVENUE  
NEW YORK

ABRAHAM ERLANGER, *National Chairman*

GEORGE J. HEXTER, *Executive Secretary*

Telephone Ashland { 9173  
9174

BEN GREY, *National Director*  
D. E. WESHNER, *Associate Director*

November 19, 1926.

Rabbi Abba Hillel Silver,  
Cleveland,  
Ohio.

Dear Doctor:

To give you an opportunity for advance preparation, I am sending you under separate cover some literature on The National Farm School.

The first <sup>sets</sup> of the Conference Reports are in Ohio, and when you come to Columbus you will have a chance to glean over them.

I am aware you understand the subject thoroughly, and I believe it is not necessary to send you an account of what we have done, but nevertheless being an individual of routine, I follow the job faithfully, and have therefore sent you same.

With best wishes, I am

Sincerely yours,

*Abraham Erlanger*

AE:MB

*I am leaving for Columbus tomorrow  
(Sunday) - and will then see you there. before the  
Conference*



BUSINESS MEN'S COUNCIL

ADAM L. GIMBEL, *Chairman*  
SAMUEL VAUCLAIN  
EX-GOV. WM. A. SPROUL of Pennsylvania  
MANNY STRAUSS  
ABRAHAM ERLANGER

EXECUTIVE BOARD

HARRY B. HIRSCH, *Chairman, Board of Trustees*  
HERBERT D. ALLMAN, *President*  
JOSEPH H. HAGEDORN, *Vice-Chairman*  
ISAAC H. SILVERMAN, *Treasurer*  
HART BLUMENTHAL  
ADOLPH EICHHOLZ  
HARRY FELIX  
SIMON FRIEDBERGER  
DANIEL GIMBEL  
MORRIS A. KAUFMANN  
ALFRED M. KLEIN  
LEON MERZ  
LOUIS NUSBAUM  
BERNARD SELIG  
JOS. N. SNELLENBURG  
HENRY S. BELBER  
WM. H. FINESHIRER  
HENRY A. JAMES  
M. R. KRAUSKOPF  
JAS. A. PRATT  
GRANT WRIGHT  
MORRIS FLEISHMAN  
FRED. P. GRUENBERG  
JOS. H. HINLEIN  
LOUIS A. HIRSCH  
BERNARD KOHN  
JAMES WORK  
JOHN ZIMMERMAN  
DAVID BURPEE  
MAURICE FELS  
HORACE FLEISHER  
ROY A. HEYMANN  
CHARLES KLINE  
LEON ROSENBAUM  
PHILIP STERLING  
JULIAN A. HILLMAN  
LOUIS SCHLESINGER

THE NATIONAL FARM SCHOOL  
EXPANSION PROJECT  
ONE PARK AVENUE  
NEW YORK

ABRAHAM ERLANGER, *National Chairman*

GEORGE J. HEXTER, *Executive Secretary*

Telephone Ashland { 9173  
9174

BEN GREY, *National Director*  
D. E. WESHNER, *Associate Director*

December 14, 1926.

Reverend Abba Hillel Silver,  
Temple Tiffereth Israel,  
E. 105th Street & Ansel Road,  
Cleveland, Ohio.

Dear Doctor:

I am sorry that I did not see you when  
I made the effort on Tuesday and learned that you were  
out of the city. Those things occur, and we must  
accept them.

Had lunch with Messrs. Baker and Goldhammer,  
and after we had finished our conversation, Mr. Goldhammer  
cheerfully said he would make an inquiry to the Jewish  
Social Research Bureau of New York and get their recent  
report on The National Farm School. I believe that  
report will show a decided betterment.

Recognizing the great work that is to be  
done for this country by The National Farm School, each  
and every community is endeavoring to give greater support  
to the National Farm School Expansion Project.

With best wishes for your continued good  
health, and trusting that we may see each other soon again,  
I am

Sincerely yours,

*Abraham Erlanger*  
Abraham Erlanger.

AE:MB



Dec. 15th, 1931

Mr. Herbert D. Allman,  
The National Farm School  
1701 Walnut St.,  
Philadelphia, Pa.

My dear Mr. Allman:-

Permit me to acknowledge your letter of  
November 4th and to advise you that we are contributing  
to the National Farm School through the Jewish Welfare  
Fund of Cleveland.

With kindest regards, permit me to remain

Very sincerely yours,

Temple Women's Association