



Abba Hillel Silver Collection Digitization Project

Featuring collections from the Western Reserve Historical Society and
The Jacob Rader Marcus Center of the American Jewish Archives

MS-4787: Abba Hillel Silver Papers, 1902-1989.

Series V: Writings, 1909-1963, undated.

Reel
172

Box
62

Folder
90

New Temple to be among the finest in the world, Cleveland, 1923.

NEW TEMPLE TO BE AMONG FINEST IN THE WORLD

23-8

Written For The Jewish Review And Observer By Rabbi A. H. Silver



RABBI A. H. SILVER.

As the monumental effort of The Temple is nearing completion it may perhaps be well to restate the purposes for which the new edifice is being erected and the ideals which inspired it.

With the shifting of The Temple population within the last ten years and the change in the character of The Temple neighborhood, it became apparent that if The Temple is to function properly it must find new quarters. For five years the question

which it lends to the structure were also determining factors in the selection of the site.

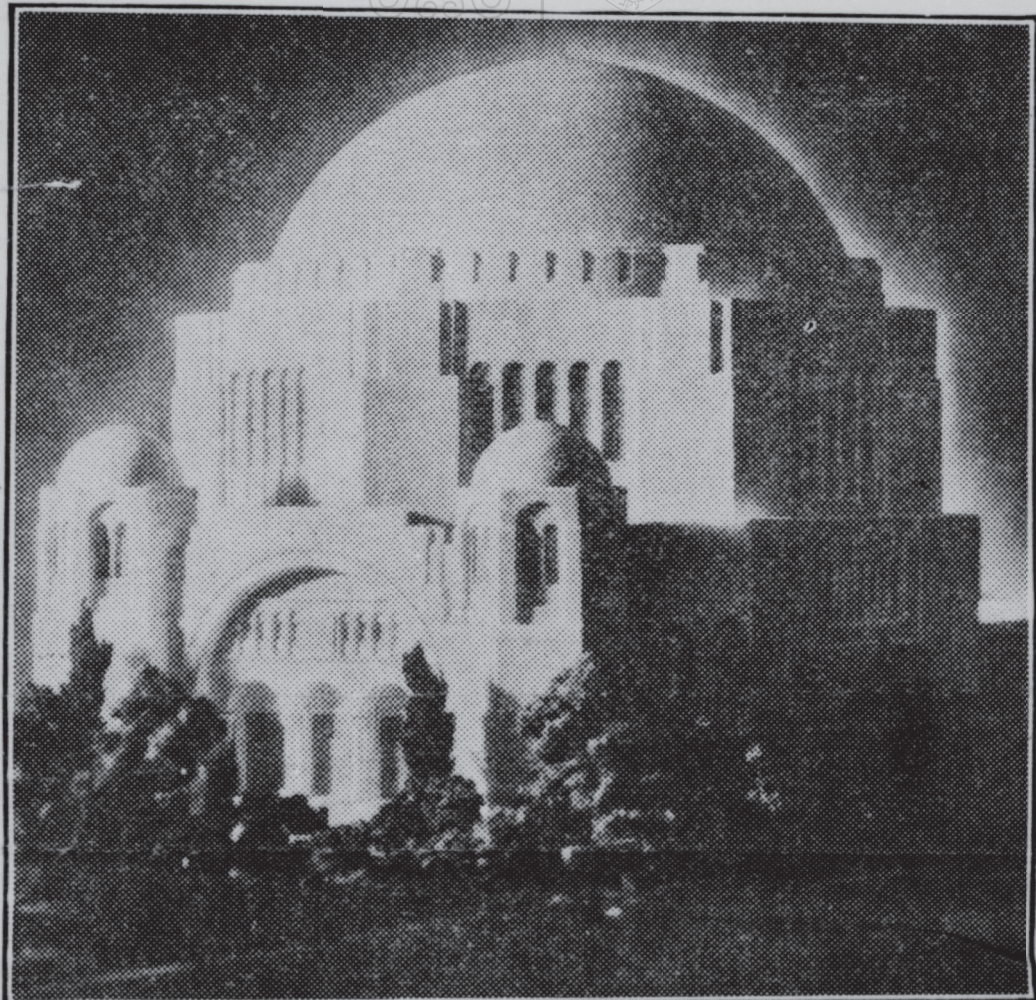
In the study of the style of the building it was thought that the structure ought to body forth the idea of a Jewish house of worship. It was to be distinctive and significant.

The usages to which The Temple is to be put determined the planning of the structure. It was the wish to make The Temple a place of worship, a place of study and a place of assembly. A complete three-story school building is therefore being erected, containing thirty-two large class rooms which will take care of a thousand children in one session, kindergarten, library, reading room and teachers' rooms. The school building is modeled after the latest and best approved school designs and architecture.

A large assembly room is being built on the level of East 105th street, which will seat one thousand. This room will be used for religious school assembly, lectures, forums, plays, banquets, dances, gymnasium and other social functions. In connection with this assembly room a large kitchen is being installed as well as lockers and showers.

The Temple proper will seat 1,900. It will be a seven-sided dome chamber, lighted by a group of five-arched windows at each side. The dominating motif of the interior will be the ark, built of carved oak of polychrome decorations.

A chapel seating 350, for summer



THE NEW TEMPLE.

of location, type of building, architecture and plans were studied. Experts on synagogue architecture and school constructions were called into consultation.

It was thought that The Temple should be located at a central point easily reached from all parts of the city inasmuch as The Temple membership now numbering over 1,200 is city-wide in its makeup. The site on Ansel road and E. 105th street, facing Wade Park, situated on a main thoroughfare within one square of Euclid avenue, the chief artery of the city's traffic, was selected. The protection which the park affords and the beauty

services, weddings and similar functions is also being built.

The new structure, which will be among the finest and most complete synagogues in the world, will, it is hoped, help Congregation Tifereth Israel carry on its religious and educational services to the community and the country on an even larger scale than heretofore. The physical structure will be a symbol and representation of the great ideal which called it into being, the ideal inscribed on its cornerstone, "Dedicated to the Service of the one God, the Fellowship of all His Children and the Prophetic Mission of His People, Israel."