



## Daniel Jeremy Silver Collection Digitization Project

Featuring collections from the Western Reserve Historical Society and  
The Jacob Rader Marcus Center of the American Jewish Archives

### **MS-4850: Daniel Jeremy Silver Papers, 1972-1993.**

Series III: The Temple Tifereth-Israel, 1946-1993, undated.

Sub-series B: Sermons, 1950-1989, undated.

---

Reel  
60

Box  
19

Folder  
1200

Trying to Make Sense of El Salvador, 1981.



in mid-December 1980—as a result of almost constant negotiation and tugging between participating civilian and military factions.

In surveying the contemporary scene, an outside observer is assailed by two overwhelming impressions: the sense of fragmentation everywhere in the social and political body; and the climate of indiscriminate, almost pathological, violence. The current configuration of forces stretches across a fragmented spectrum: wealthy landed elites and some military on the far Right; industrialists, professionals, businessmen and most of the rest of the military, ranging from Right to Center; Christian Democrats, Social Democrats, labor groups, other small political organizations, and the Church stretching from Center to Left; and a few radical parties and armed insurgent groups on the extreme Left.

Moreover, there is fragmentation and incoherence within these groupings. Even within the broad institutional cohesion of the military, officers express a range of views, the Christian Democrats and the clerics are divided, and businessmen and professionals represent a varied range. The Left is also factionalized, despite surface organization. The opposition Democratic Revolutionary Front (FDR) is a mixture of moderate and radical political groups; the armed leftist insurgents consist of a number of factions, most avowedly Marxist in ideological orientation (and Cuban-supported), currently grouped as the United Revolutionary Directorate (DRU).

These elements function in a climate of violence that is similar to Lebanon's, and by now beyond almost anyone's control. Besides official government action against guerrillas, there are paramilitary "hit squads," hard-core terrorist groups on both extremes, vigilantism, and spontaneous "defense" groups, all operating with increased intensity and considerable autonomy.<sup>1</sup>

The current state of play within El Salvador can perhaps best be conveyed as a series of propositions:

1) The population overwhelmingly wants an end to the violence, and this desire now transcends political differences within the general populace. Violence is almost the central reality dictating the way forces maneuver.

2) The left-wing insurgents grouped in the DRU have not gained in popular support; through clandestine acquisition of military

<sup>1</sup> It has been estimated that in 1980 more than 9,000 people, including the popular Archbishop, Oscar Romero, were killed by political violence. In December 1980 the torture and murder of the leadership of the FDR and a short time later the brutal murder of three American nuns and one lay missionary sparked a crisis that led to the most recent reorganization of the government.



equipment from Cuban and other external sources, however, they have accumulated a significant military capability. In what appeared to be an effort to replicate the Sandinista strategy, the DRU launched a widescale assault against government forces in early January, 1981, in a major effort to bring down the governing coalition militarily, and consolidate the leadership and control over all opposition forces in the FDR.

3) Elements of the traditional economic oligarchy continue to try to use their old military channels to stop reform measures and restore the traditional power pattern. They have influence over some officers, but not the power over the military as an institution that they once had.

4) The government represents the shaky center ground on which the military and the Christian Democrats have met. The understanding between the military and the Christian Democrats now constitutes the new basis for official political power, but the understanding is a fragile one, for the participants' multifarious views are hard to reconcile. The military wants to concentrate on the elimination of the insurgency. For the Christian Democrats the problem is more complex than public order; they advocate a process of social and political reform as a basis for re-forming an internal political consensus, isolating the extreme Left, and making armed insurrection less appealing.

5) All agree on the need to reestablish order and eliminate the violence rocking the country; but the nature and extent of military enforcement operations, how to control the military and security apparatus, and how to eliminate the various extra-official violence are all questions that have persistently threatened the survival of the Christian Democrat-military coalition.

6) A concept has been gradually emerging in different versions and from a variety of sources—Christian Democrats, young business professionals, non-Marxist elements of the FDR—of negotiating with the opposition to re-form a consensus and, in effect, give the non-guerrilla groups a way to abandon the road of violence. This concept is also being advanced by countries like Costa Rica and Mexico, and by Social Democrat leaders in COPPAL (the Permanent Conference of Latin American Political Parties), a grouping of Social Democratic parties such as Mexico's Revolutionary Institutional Party (PRI) and Venezuela's Democratic Action (AD).

Any concept of a "center" in the current Salvadoran situation is a relative one. Taking it in that sense, the government is a "center" and could be the nucleus of a process that over time

could dep  
tration h  
tion, incl  
defend it  
ministrat  
for the sa  
writing, f  
the gover  
a force th  
re-create  
situation  
resolution  
nature of  
situation

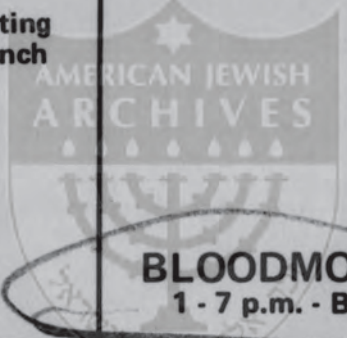
In Nic  
since Jul  
process v  
is the dor  
it contro  
forces. Y  
though i  
economy  
mixed, n  
private s  
and struc  
able to t  
viable, a  
nomic sy  
of a Mar

Moreo  
the socie  
key role  
political  
Even the  
Novemb

<sup>2</sup> In Sept  
agreement v  
and Japanes  
locked Nicar  
significant n



# YOUR TEMPLE CALENDAR — *Clip and Save*

SUN	MON	TUES	WED	THURS	FRI	SAT
<b>5</b> <span style="border: 1px solid black; padding: 2px;">APRIL</span> <b>SERVICES</b> 10:30 a.m. The Temple Branch Rabbi Daniel Jeremy Silver will speak on <b>THE MODERN JEWISH MIND</b> <b>IV ABRAHAM JOSHUA HESCHEL</b> Model Seder in the school	<b>6</b>  Holiday Workshop Pesach Rabbi Paul Joseph 7:30 p.m. - Branch	<b>7</b> TWA <b>FIRST TUESDAY</b> 11:00 a.m. - Shop & Socialize 12:00 noon - Lunch 1:00 p.m. - John Price Fellowship & Study Group Rabbi Stephen Klein 10:30 a.m. - Branch <b>LUNCH WITH THE RABBI</b> Sheraton Inn - Beachwood 12:00 noon - 1:30 p.m. Mr. & Mrs. Club Board Meeting - 8:00 p.m.	<b>8</b>	<b>9</b>	<b>10</b>  Services - 5:30 p.m. The Temple Chapel	<b>11</b> Shabbat Services 11:15 a.m. - Branch  Bar Mitzvah <b>ADAM SCHMITH</b> 11:00 a.m. The Temple Chapel
<b>12</b> <b>SERVICES</b> 10:30 a.m. The Temple Branch Rabbi Daniel Jeremy Silver will speak on <b>TRYING TO MAKE SENSE OF EL SALVADOR</b>	<b>13</b>	<b>14</b> TWA Activities 10:00 a.m. - Branch Fellowship & Study Group Rabbi Stephen Klein 10:30 a.m. - Branch Temple Board Meeting 8:00 p.m. - Branch Religious School Board Meeting 7:45 p.m. - Study Group 8:15 p.m. - Meeting	<b>15</b> TWA Board Meeting 10:00 a.m. - Branch	<b>16</b>  <b>BLOODMOBILE</b> 1 - 7 p.m. - Branch	<b>17</b> Services - 5:30 p.m. The Temple Chapel <b>SEVENTH SABBATH</b> 8:00 p.m. - Branch	<b>18</b> NO SCHOOL <b>FIRST SEDER</b>
<b>19</b> FIRST DAY PASSOVER <b>PASSOVER SERVICE</b> 10:30 a.m. The Temple Branch Rabbi Daniel Jeremy Silver will speak	<b>20</b> <i>No units of Frodo</i>	<b>21</b> TWA Activities 10:00 a.m. - Branch Fellowship & Study Group Rabbi Stephen Klein 10:30 a.m. - Branch	<b>22</b>	<b>23</b>	<b>24</b> Services - 5:30 p.m. The Temple Chapel	<b>25</b> Last Day Passover Passover Service & Hebrew Graduation 10:30 a.m. - Branch
<b>26</b> <b>SERVICES</b> 10:30 a.m. The Temple Branch Rabbi Daniel Jeremy Silver will speak <i>fall</i> No School	<b>27</b>	<b>28</b> TWA Activities 10:00 a.m. - Branch Fellowship & Study Group Rabbi Stephen Klein 10:30 a.m. - Branch  Classes Resume	<b>29</b>	<b>30</b>	<b>1</b> <span style="border: 1px solid black; padding: 2px;">MAY</span> Services - 5:30 p.m. The Temple Chapel <b>FIRST FRIDAY</b> <b>MARTIN GILBERT</b> 8:15 p.m. - Branch	<b>2</b> Shabbat Services 11:15 a.m. - Branch  Bat Mitzvah <b>JACQUELINE MILLER</b> 11:00 a.m. The Temple Chapel  Bat Mitzvah <b>DANA SIDNEY</b> 4:30 p.m. The Temple Chapel

----- NO SCHOOL PASSOVER VACATION -----



You can't be in L.A. for long - not being a great visitor,  
 a few years ago were minimal contributions - we need to see  
 the mayor's office of Peter, Todd - I see just minutes  
 on a C.C. label near Monday to order of from your name  
 from the U.S.A. division but purpose had been  
 opened and Friday night at Belle to - the local report  
 org. I am sure to see the same in the  
 stopped by a armed police I see more armed and  
 of the can to recruit - by armed police and other  
 to have opened to see armed and armed and  
 apparently a can of armed and armed and armed  
 secret in the armed and armed and armed  
 we need to see the armed and armed and armed  
 refusal paper - the armed and armed and armed  
 furnished by armed and armed and armed  
 16 see armed and armed and armed  
 You have been armed and armed and armed  
 L.A. armed and armed and armed  
 16 armed and armed and armed  
armed and armed and armed



[illegible]



THAT'S ANYONE ELSE - A RECENT REVIEW OF THE  
SILVERMAN SITUATION IN FOREIGN AFFAIRS WAS MADE  
IN SEPTEMBER

IN JANUARY IN THE CONTEMPORARY SENSE,  
AN OUTSIDE OBSERVER IS ASSISTED BY 2  
OVERWHELMING IMPRESSIONS: THE SENSE OF  
FRAGMENTATION EVERYWHERE IN THE SOCIAL  
AND POLITICAL BODY; AND THE CLIMATE OF  
DISCRIMINATION ALMOST PATHOLOGICAL,  
VIOLENCE

THE THING IS REPEATED - NO WITNESS WAS MADE -  
NO JURY MADE THE PROSECUTION WAS MADE

Spain gave L.A.; judicial, the R.C. Court, and  
a cleaned every, L.A. was seized not judicial  
being and in 1924 the finder also presented the  
EL Salvador was freight + intended was understood L.A.  
of business - - it was very a judicial antony - to  
reversed the intended + the one was - EL Salvador.  
particularly from relevance because it was of the  
matter has no part in the attendant side to in  
could not do it judicial, every in depth to  
Europe.



Good & Coffee same Ed. Salander & Canlatade -  
1986, Green 1970 coffee beans was very in Green -  
Then was had coffee from the mill - then was  
had not quickly planted coffee the - - that was  
a hard work - but most of the land belonged to  
the owner of the land which was the father  
commonly - - found that because the U.S. would  
not buy coffee which had been from a popular  
place - the de business person to an outside person  
needed apart to be with

1) it was planted under the tree - very good  
2) it was planted under the tree - very good  
under the tree the land was very good and very good  
to use the land - but the land was very good and very good  
land - it was planted - for 4 years the coffee was (22/1/80)  
became 40% of the land of the country - all the  
land was planted for coffee from - - then was  
the camp was very good by the people and all  
about - - just some of the most int. people  
was - could be used land .  
that was used under the people -  
the land was not used in the land



water, actual eye - Bring the eyes part of the  
center, see down to, to average - left - an  
ed, model down - the point - outline - longer -  
to down - center - down the front down  
referred to the eyes down -

[illegible]

The heavy work of the day is done.



- I want to you.  
to you on the road - I want to be by the way -  
But in 1944 - I was 1 year - from 1 day you  
to 6 to 1000 - selection - unlucky - as  
refuse any thing select - deported - expelled -  
stolen selection - many free and - will be  
from the I can't kill everyone -

My government now called by -- will  
they can say that

1) social policy, new and new,  
economic policy of a small country,  
a republic and - limited political system  
but public for direct economic policy  
for pol. and social policy

2. with 20th and 21st century - it is possible - more  
advanced ed. - a new type of state and new  
concepts to a liberation theory -  
more - more modern economic and social  
rules - required and can be accomplished  
1970 to 2000 political system

3. the new 10th and 20th century -  
change of a new pub. system - new  
kind of economic and social policy  
system but of the public and free market







1. Wings - 1977 - Wings  
 2. Wings - 1977 - Wings  
 3. Wings - 1977 - Wings  
 4. Wings - 1977 - Wings  
 5. Wings - 1977 - Wings  
 6. Wings - 1977 - Wings  
 7. Wings - 1977 - Wings  
 8. Wings - 1977 - Wings  
 9. Wings - 1977 - Wings  
 10. Wings - 1977 - Wings

27. Wings - 1977 - Wings  
 28. Wings - 1977 - Wings  
 29. Wings - 1977 - Wings  
 30. Wings - 1977 - Wings  
 31. Wings - 1977 - Wings  
 32. Wings - 1977 - Wings  
 33. Wings - 1977 - Wings  
 34. Wings - 1977 - Wings  
 35. Wings - 1977 - Wings  
 36. Wings - 1977 - Wings  
 37. Wings - 1977 - Wings  
 38. Wings - 1977 - Wings  
 39. Wings - 1977 - Wings  
 40. Wings - 1977 - Wings

41. Wings - 1977 - Wings  
 42. Wings - 1977 - Wings  
 43. Wings - 1977 - Wings  
 44. Wings - 1977 - Wings  
 45. Wings - 1977 - Wings  
 46. Wings - 1977 - Wings  
 47. Wings - 1977 - Wings  
 48. Wings - 1977 - Wings  
 49. Wings - 1977 - Wings  
 50. Wings - 1977 - Wings







one year - NOT APPROVED V.N. - 5 million

more no case - but suggest also with

just - getting cases - no more more money

N. needs

tenure - see minutes p. 10 & 11 -  
leave that - piece of R.C. Name -  
willing to give angles to stay today - but

Order would left should remain on  
local case. Reason of U.N. - need to  
upward left many are needed  
must turned out about 11 in products of

franchise

Power to the People slogan of C.C. - need  
have no real justice - but more  
than 1000 people (Peters) at  
calling

U.S. policy invisible - on not possible, just  
myself a full time need to lower order  
(Hagg) - note C - but in the day



was probably my next best & so that was my  
last -

My dear mother and  
my to the end //





**CONTINUED ON  
NEXT ROLL**

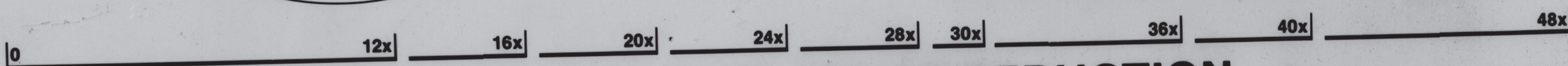
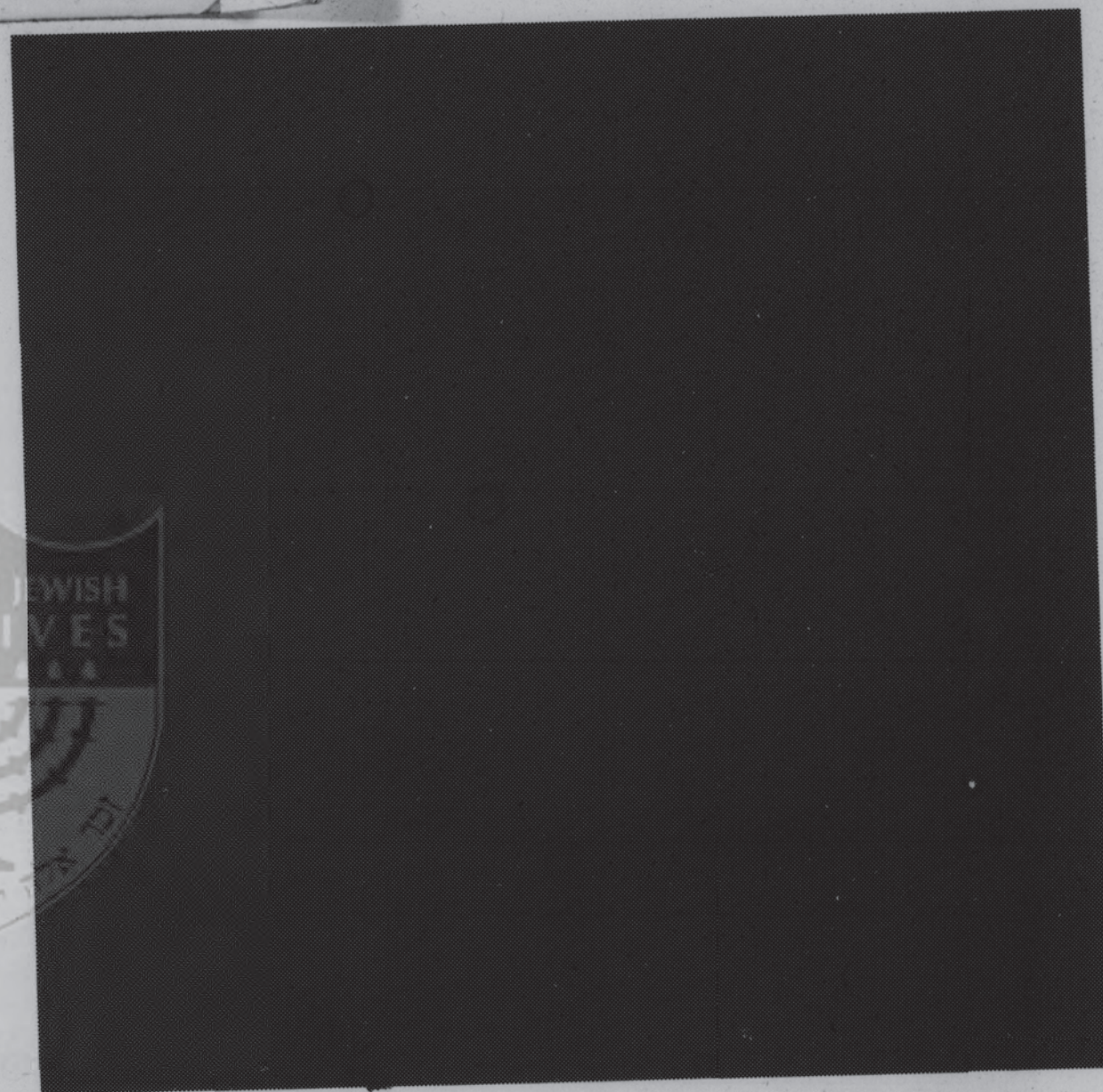
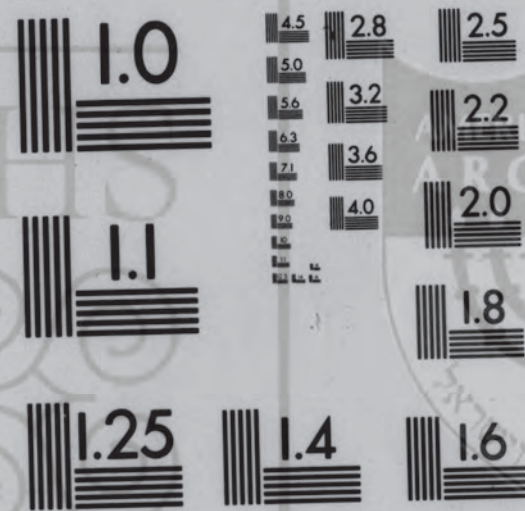
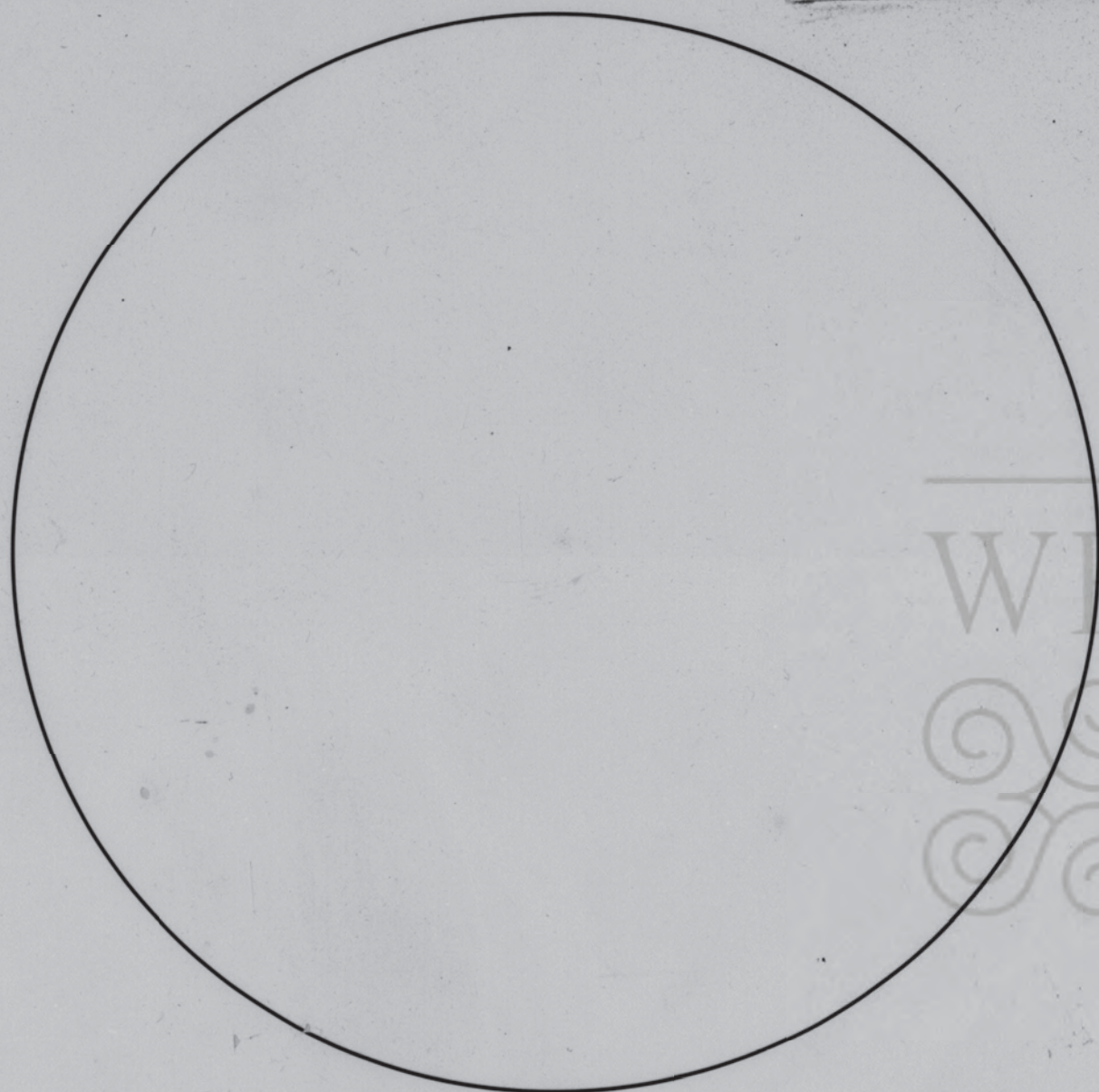
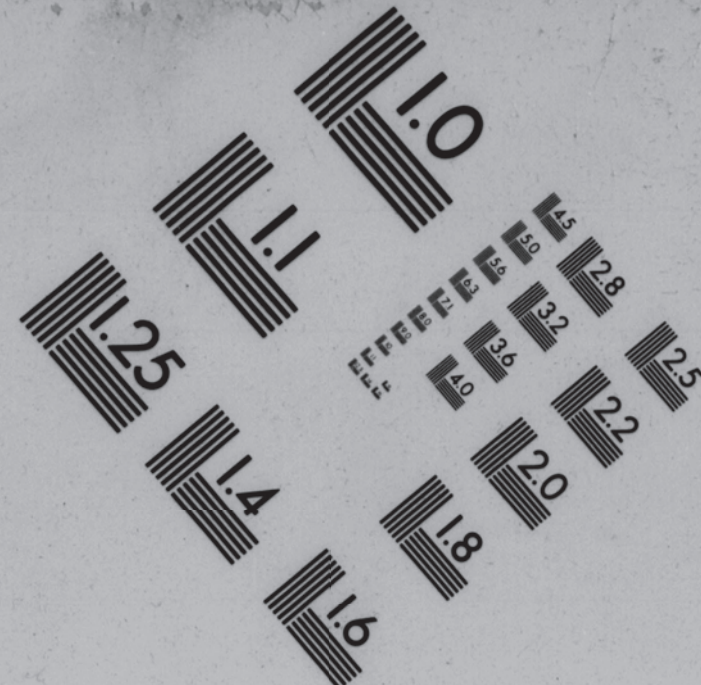
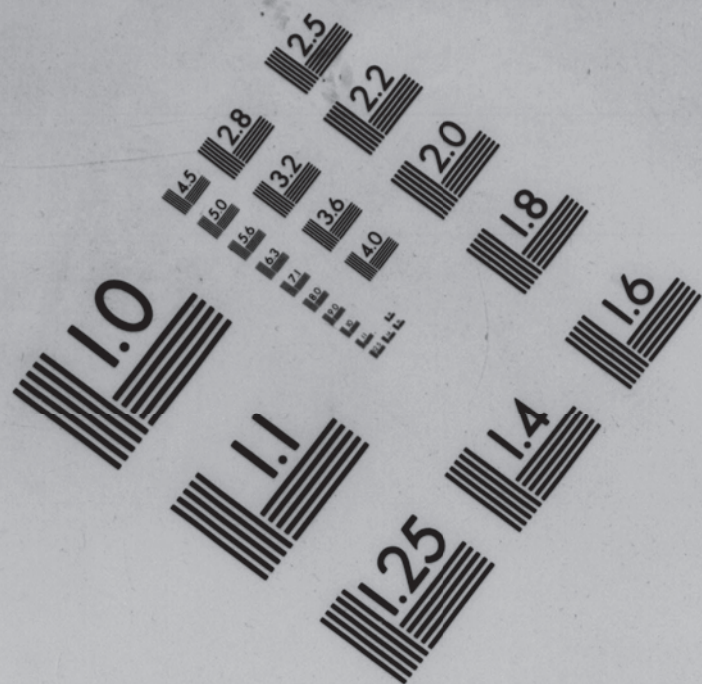




THE WESTERN RESERVE  
HISTORICAL SOCIETY

10825 East Boulevard

Cleveland, Ohio 44106



SHOULD MEASURE .25" AT REDUCTION

REDUCTION RATIO:

REDUCTION  
RATIO 13X

